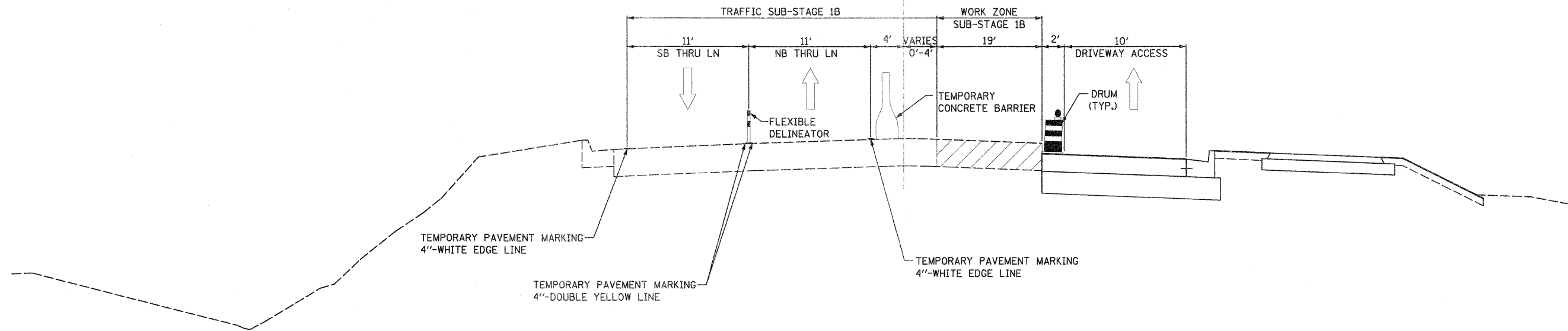
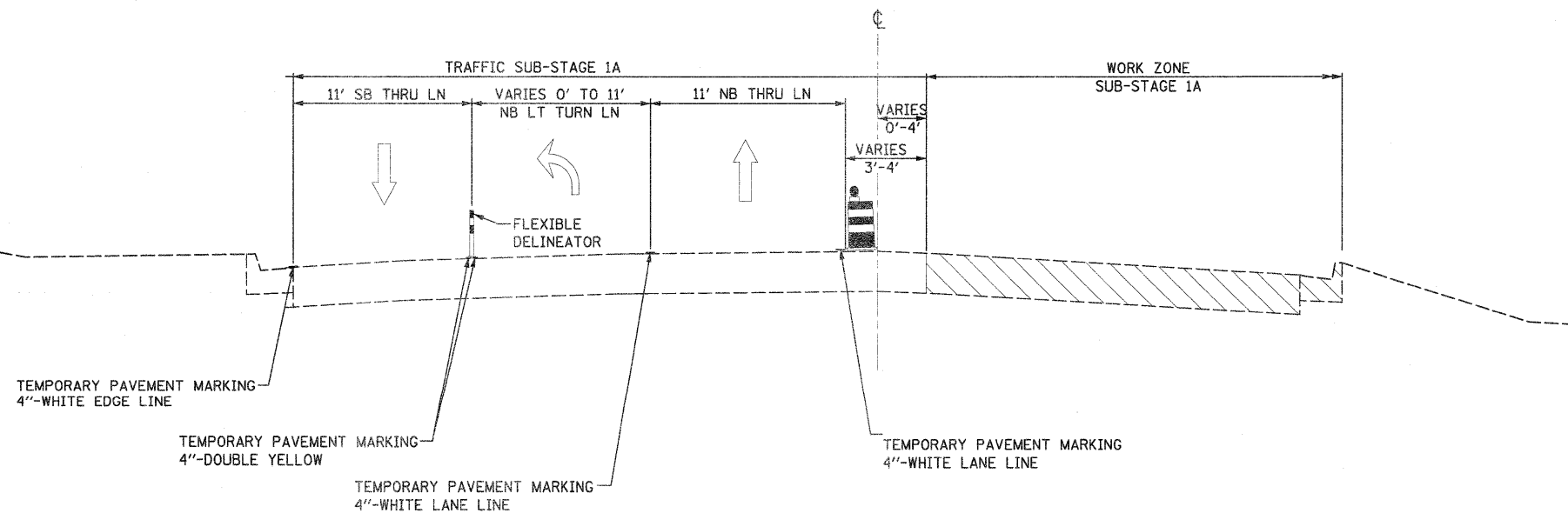


IL ROUTE 2  
STA. 291+00.00 - STA. 304+50.00



IL ROUTE 2  
STA. 304+50.00 - STA. 313+00.00



FILE NAME = D201500-sht-staging02_typical05.dgn	USER NAME = TERRA	DESIGNED - BCB	REVISED -	<b>STATE OF ILLINOIS DEPARTMENT OF TRANSPORTATION</b>	<b>MAINTENANCE OF TRAFFIC STAGE I TYPICAL SECTIONS</b>	F.A. RTE.	SECTION	COUNTY	TOTAL SHEETS	SHEET NO.
	PLOT SCALE = 10,0000' / IN.	DRAWN - CVM	REVISED -			742	34R	WINNEBAGO	491	95
	PLOT DATE = 1/16/2012	CHECKED - DPA	REVISED -			CONTRACT NO. 64515				
	DATE - 01/17/12	REVISED -		SCALE:	SHEET NO. OF SHEETS	STA. TO STA.	ILLINOIS FED. AID PROJECT			