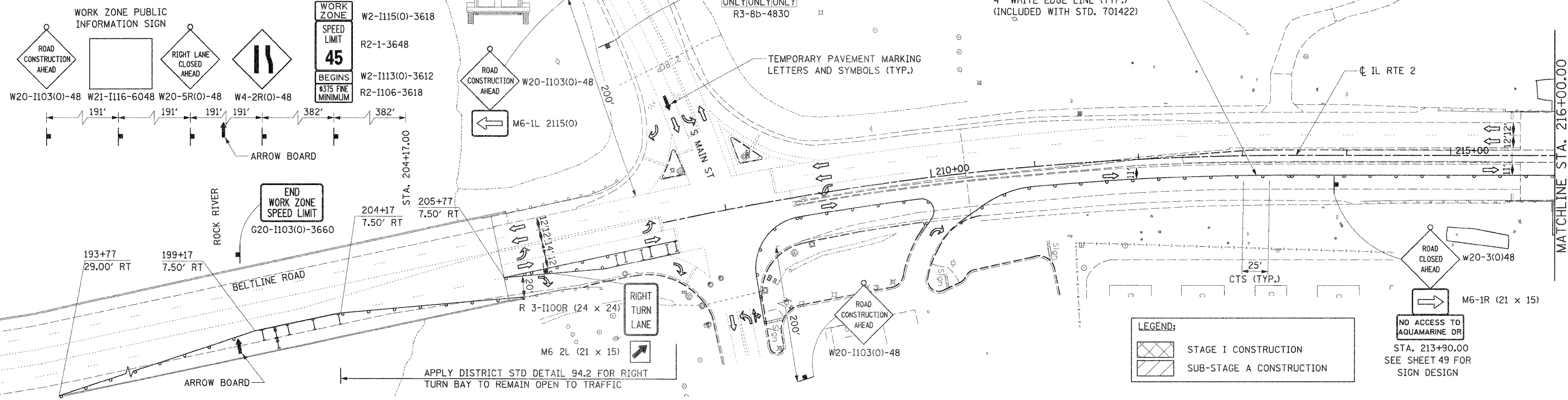
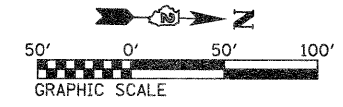
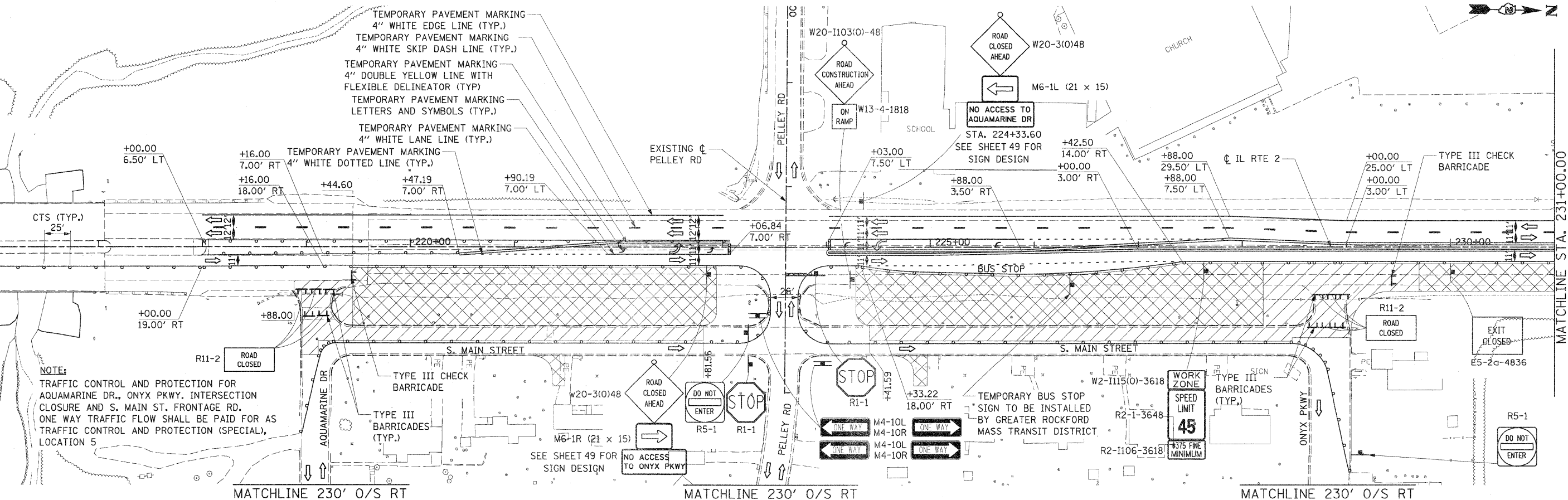


**NOTE:**  
THE NORTHBOUND AND SOUTHBOUND IL RTE 2 LANE CLOSURES FROM THE SOUTH PROJECT LIMIT TO STA. 263+00 SHALL BE PAID FOR ON A LUMP SUM BASIS AS TRAFFIC CONTROL AND PROTECTION, STANDARD 701422, INCLUDING THE MODIFIED APPROACH SIGNAGE AND SIGN SPACING.

**NOTE:**  
PLACE MESSAGE BOARD FROM BEGINNING OF STAGE 1 AND KEEP IN PLACE FOR 2 WEEKS



**LEGEND:**  
 STAGE I CONSTRUCTION  
 SUB-STAGE A CONSTRUCTION



**NOTE:**  
TRAFFIC CONTROL AND PROTECTION FOR AQUAMARINE DR., ONYX PKWY, INTERSECTION CLOSURE AND S. MAIN ST. FRONTAGE RD. ONE WAY TRAFFIC FLOW SHALL BE PAID FOR AS TRAFFIC CONTROL AND PROTECTION (SPECIAL), LOCATION 5

FILE NAME = 0281508-sh1-staging03.dgn	USER NAME = TERRA	DESIGNED - BCB	REVISED -	<b>STATE OF ILLINOIS DEPARTMENT OF TRANSPORTATION</b>	<b>MAINTENANCE OF TRAFFIC PLAN STAGE I AND SUB-STAGE A</b>	F.A. RTE. 742	SECTION 34R	COUNTY WINNEBAGO	TOTAL SHEETS 491	SHEET NO. 111		
PLOT SCALE = 50.0000' / IN.	DRAWN - CBC	CHECKED - DPA	REVISED -			SCALE: 1" = 50'	SHEET NO. 1 OF 10 SHEETS	STA. 216+00.00	TO STA. 231+00.00	CONTRACT NO. 64515		
PLOT DATE = 1/16/2012	DATE - 01/17/12	REVISED -	REVISED -			ILLINOIS FED. AID PROJECT						