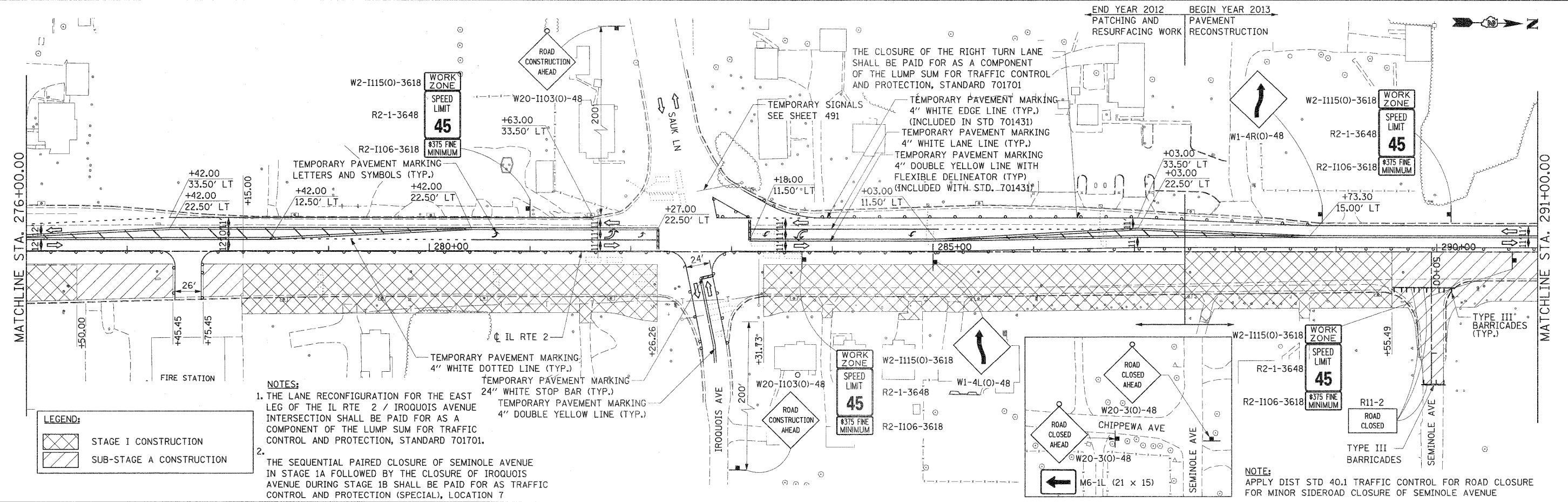
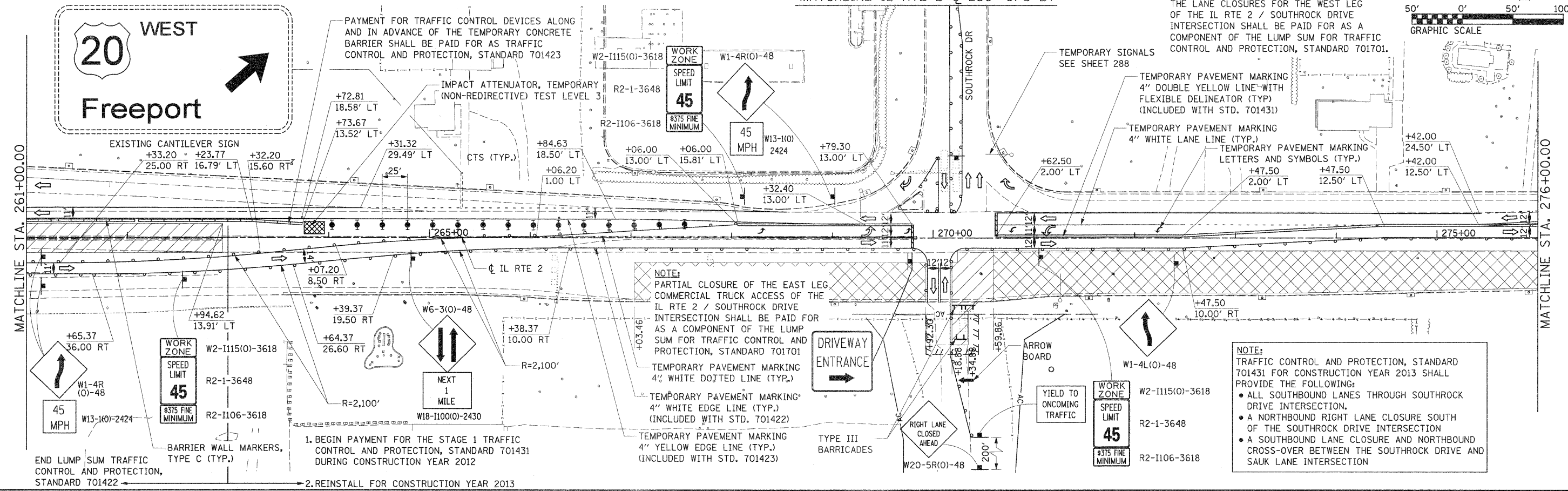


MATCHLINE IL RTE 2 @ 230' 0/S LT

NOTE:
THE LANE CLOSURES FOR THE WEST LEG OF THE IL RTE 2 / SOUTHROCK DRIVE INTERSECTION SHALL BE PAID FOR AS A COMPONENT OF THE LUMP SUM FOR TRAFFIC CONTROL AND PROTECTION, STANDARD 701701.



LEGEND:

	STAGE I CONSTRUCTION
	SUB-STAGE A CONSTRUCTION

- NOTES:**
- THE LANE RECONFIGURATION FOR THE EAST LEG OF THE IL RTE 2 / IROQUOIS AVENUE INTERSECTION SHALL BE PAID FOR AS A COMPONENT OF THE LUMP SUM FOR TRAFFIC CONTROL AND PROTECTION, STANDARD 701701.
 - THE SEQUENTIAL PAIRED CLOSURE OF SEMINOLE AVENUE IN STAGE 1A FOLLOWED BY THE CLOSURE OF IROQUOIS AVENUE DURING STAGE 1B SHALL BE PAID FOR AS TRAFFIC CONTROL AND PROTECTION (SPECIAL), LOCATION 7

STATE OF ILLINOIS
DEPARTMENT OF TRANSPORTATION

MAINTENANCE OF TRAFFIC PLAN
STAGE I AND SUB-STAGE A

FILE NAME = 0201508-sh1-stag1rng06.dgn

USER NAME = TFRRA
PLOT SCALE = 50.0000' / IN.
PLOT DATE = 1/16/2012

DESIGNED - BCB
DRAWN - CBC
CHECKED - DPA
DATE - 01/17/12

REVISED -
REVISED -
REVISED -
REVISED -

SCALE: 1" = 50'
SHEET NO. 4 OF 10 SHEETS
STA. 261+00.00 TO STA. 291+00.00

F.A. RTE. 742
SECTION 34R
COUNTY WINNEBAGO
TOTAL SHEETS 491
SHEET NO. 114
CONTRACT NO. 64515
ILLINOIS FED. AID PROJECT