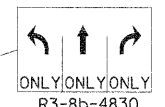
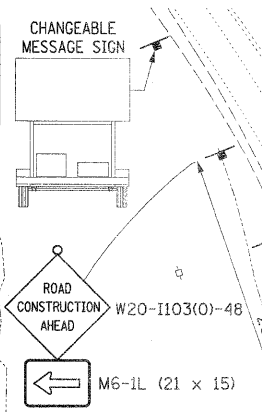
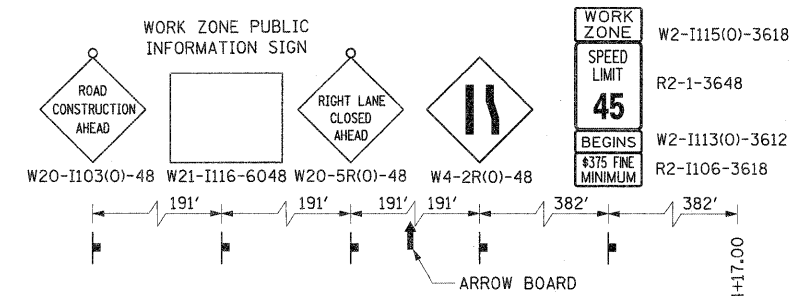


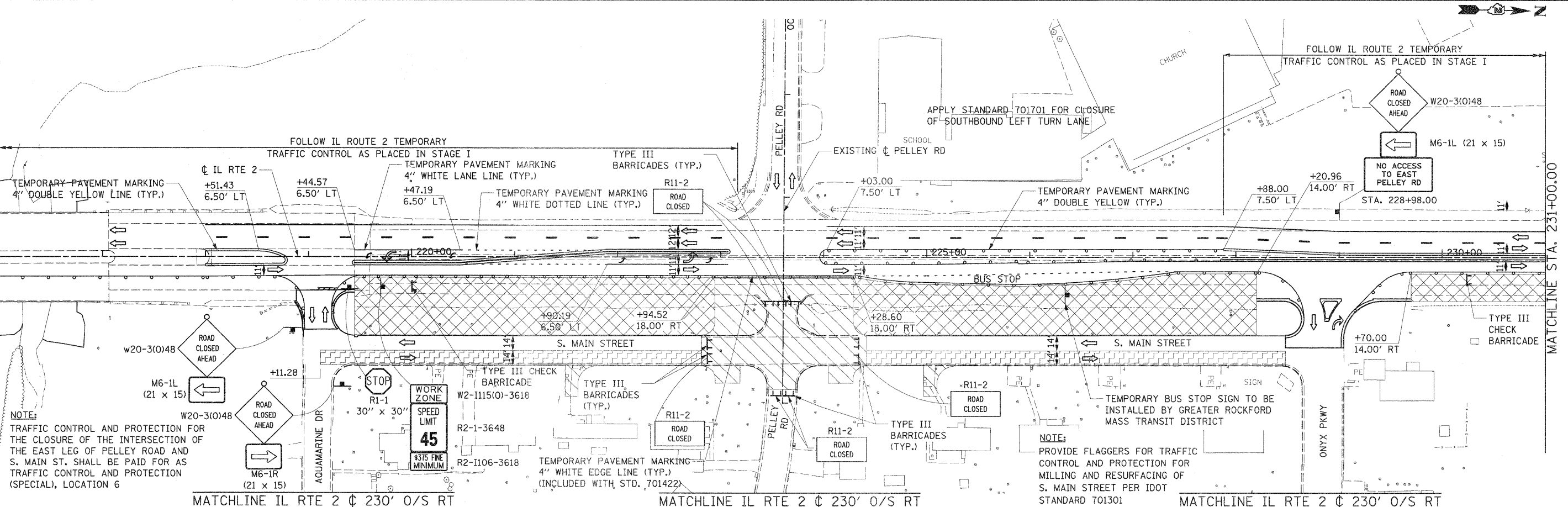
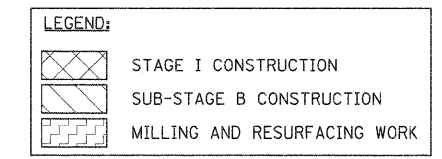
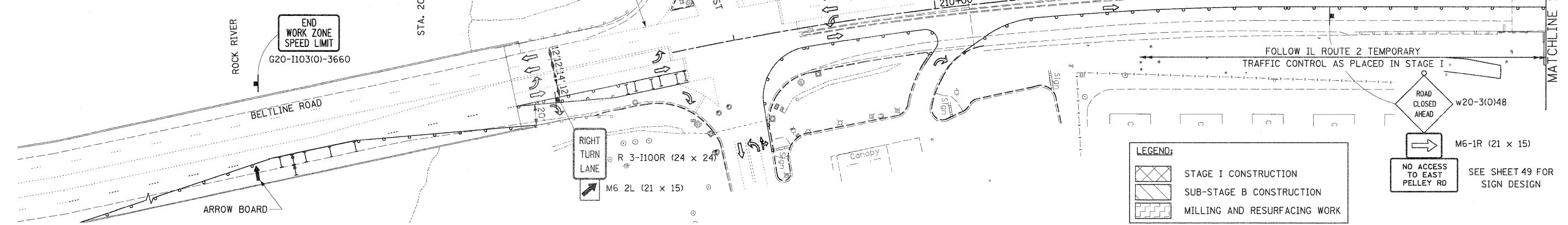
RETAIN IDOT STANDARD 701422 WITH MODIFIED SIGNAGE AND SPACING FROM PREVIOUS STAGE

NOTE: PLACE MESSAGE BOARD FROM BEGINNING OF STAGE 1B AND KEEP IN PLACE FOR 2 WEEKS

NOTE: THE NORTHBOUND AND SOUTHBOUND IL RTE 2 LANE CLOSURES FROM THE SOUTH PROJECT LIMIT TO STA. 263+00 SHALL BE PAID FOR ON A LUMP SUM BASIS FOR TRAFFIC CONTROL AND PROTECTION, STANDARD 701422.



SEE IDOT STANDARD
DETAIL 701422



NOTE: TRAFFIC CONTROL AND PROTECTION FOR THE CLOSURE OF THE INTERSECTION OF THE EAST LEG OF PELLEY ROAD AND S. MAIN ST. SHALL BE PAID FOR AS TRAFFIC CONTROL AND PROTECTION (SPECIAL), LOCATION 6

NOTE: PROVIDE FLAGGERS FOR TRAFFIC CONTROL AND PROTECTION FOR MILLING AND RESURFACING OF S. MAIN STREET PER IDOT STANDARD 701301

FILE NAME = 0201500-shv-staging11.dgn	USER NAME = TERRA	DESIGNED - BCB	REVISED -	STATE OF ILLINOIS DEPARTMENT OF TRANSPORTATION	MAINTENANCE OF TRAFFIC PLAN STAGE I AND SUB-STAGE B	F.A. RTE. 742	SECTION 34R	COUNTY WINNEBAGO	TOTAL SHEETS 491	SHEET NO. 121		
PLOT SCALE = 50.0000' / IN.	DRAWN - CBC	CHECKED - DPA	REVISED -			SCALE: 1" = 50'	SHEET NO. 1 OF 9 SHEETS	STA.	TO STA. 231+00.00	CONTRACT NO. 64515		
PLOT DATE = 1/16/2012	DATE - 01/17/12	REVISED -	REVISED -			ILLINOIS FED. AID PROJECT						