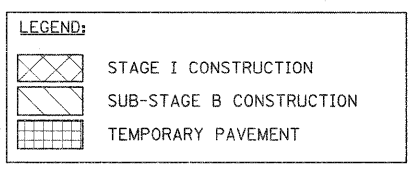
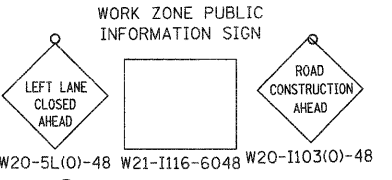
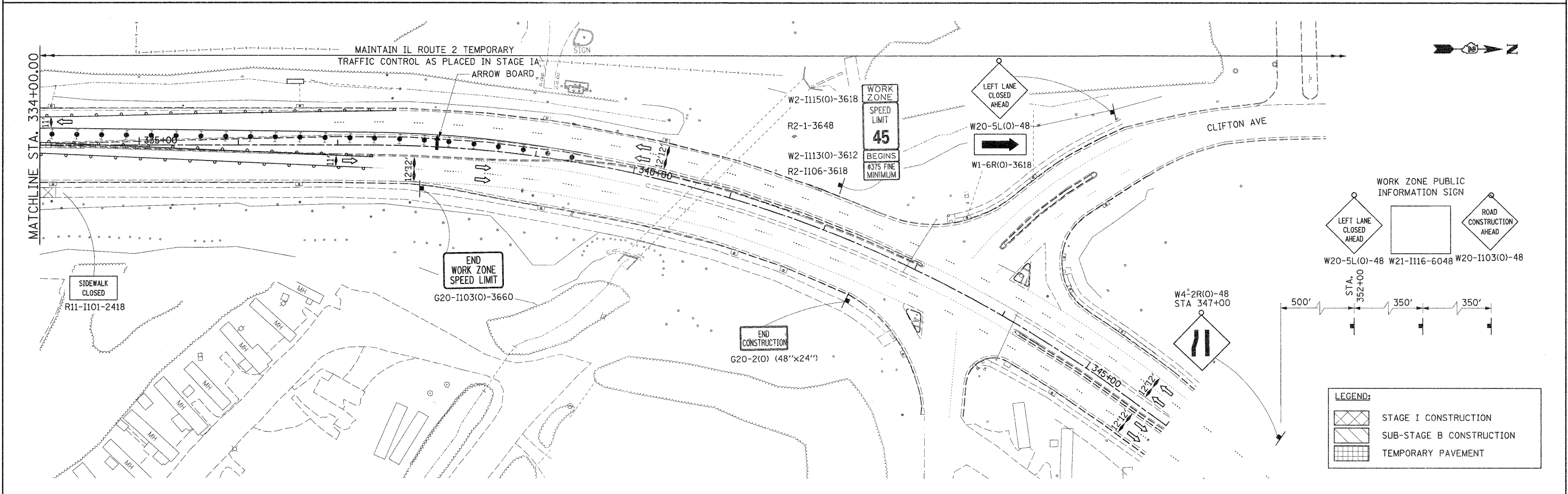


**NOTE:**  
 PAYMENT FOR TRAFFIC CONTROL AND PROTECTION ALONG NORTHBOUND AND SOUTHBOUND IL 2 FROM STATION 263+00 TO THE NORTH PROJECT LIMITS SHALL BE PAID FOR ITS STAGE 1 INSTALLATION DURING CONSTRUCTION YEAR 2013 AS TRAFFIC CONTROL AND PROTECTION, STANDARD 701431.



FILE NAME = D201500-ht-staging16.dgn	USER NAME = TERRA	DESIGNED - BCB	REVISED -	<b>STATE OF ILLINOIS DEPARTMENT OF TRANSPORTATION</b>	<b>MAINTENANCE OF TRAFFIC PLAN STAGE I AND SUB-STAGE B</b>	F.A. RTE. 742	SECTION 34R	COUNTY WINNEBAGO	TOTAL SHEETS 491	SHEET NO. 126	
	PLOT SCALE = 50.0000' / 1" IN.	DRAWN - CBC	REVISED -			SCALE: 1" = 50'	SHEET NO. 6 OF 9 SHEETS	STA. 320+00.00 TO STA.		CONTRACT NO. 64515	
	PLOT DATE = 1/16/2012	CHECKED - DPA	REVISED -			ILLINOIS FED. AID PROJECT					
		DATE - 01/17/12	REVISED -								