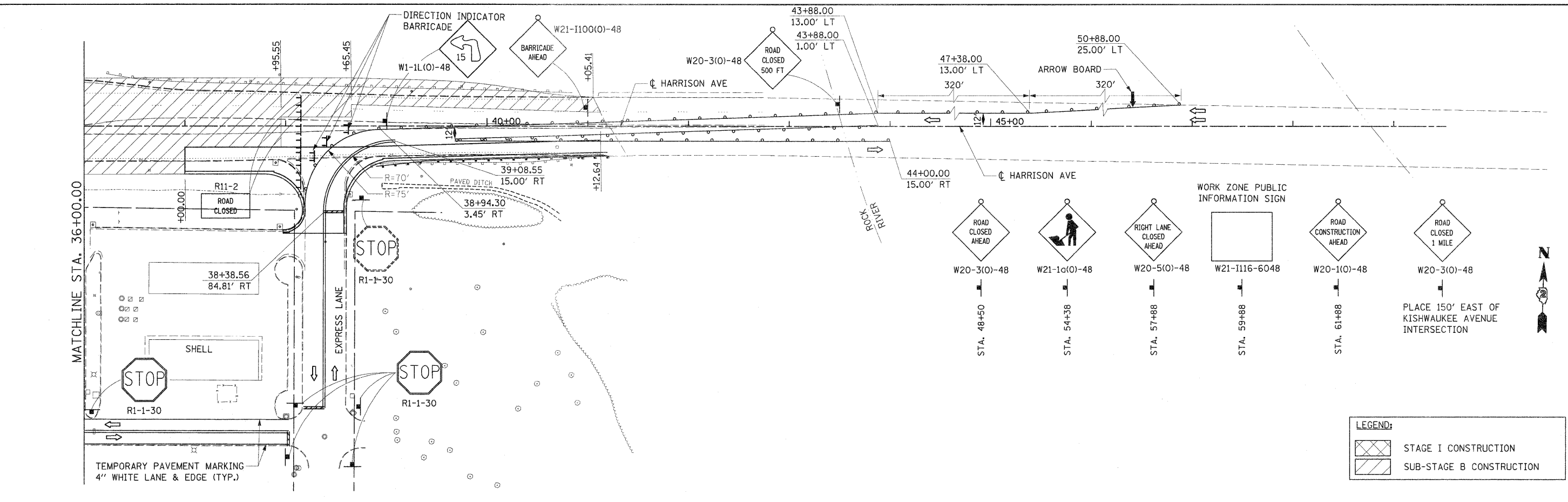
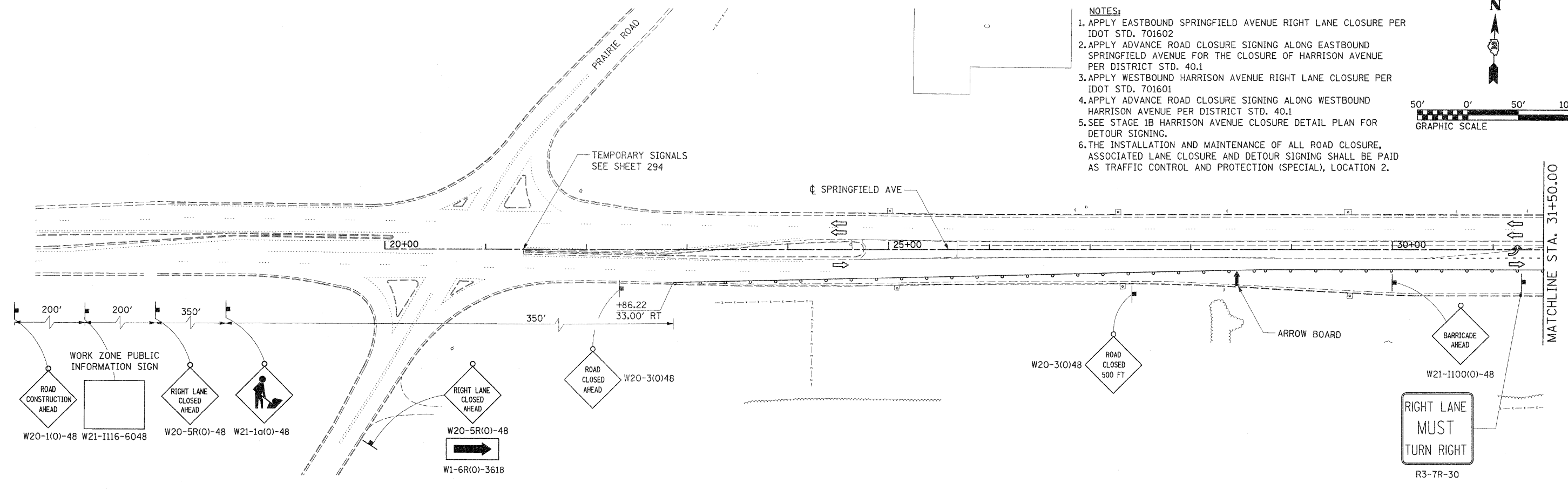
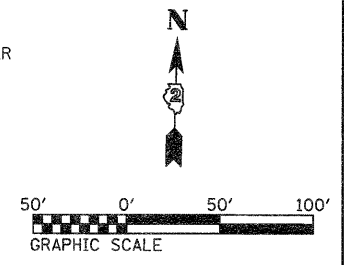


- NOTES:**
1. APPLY EASTBOUND SPRINGFIELD AVENUE RIGHT LANE CLOSURE PER IDOT STD. 701602
 2. APPLY ADVANCE ROAD CLOSURE SIGNING ALONG EASTBOUND SPRINGFIELD AVENUE FOR THE CLOSURE OF HARRISON AVENUE PER DISTRICT STD. 40.1
 3. APPLY WESTBOUND HARRISON AVENUE RIGHT LANE CLOSURE PER IDOT STD. 701601
 4. APPLY ADVANCE ROAD CLOSURE SIGNING ALONG WESTBOUND HARRISON AVENUE PER DISTRICT STD. 40.1
 5. SEE STAGE 1B HARRISON AVENUE CLOSURE DETAIL PLAN FOR DETOUR SIGNING.
 6. THE INSTALLATION AND MAINTENANCE OF ALL ROAD CLOSURE, ASSOCIATED LANE CLOSURE AND DETOUR SIGNING SHALL BE PAID AS TRAFFIC CONTROL AND PROTECTION (SPECIAL), LOCATION 2.



LEGEND:

	STAGE I CONSTRUCTION
	SUB-STAGE B CONSTRUCTION

FILE NAME = 0201500-sht-staging18.dgn	USER NAME = TERRA	DESIGNED - BCB	REVISED -	STATE OF ILLINOIS DEPARTMENT OF TRANSPORTATION	MAINTENANCE OF TRAFFIC PLAN STAGE I AND SUB-STAGE B			F.A. RTE. 742	SECTION 34R	COUNTY WINNEBAGO	TOTAL SHEETS 491	SHEET NO. 128
	PLOT SCALE = 50.0000' / IN.	DRAWN - CBC	REVISED -		SCALE: 1" = 50'	SHEET NO. 8 OF 9 SHEETS	STA.	TO STA.	CONTRACT NO. 64515			
	PLOT DATE = 1/16/2012	CHECKED - DPA	REVISED -		ILLINOIS FED. AID PROJECT							
		DATE - 01/17/12	REVISED -									