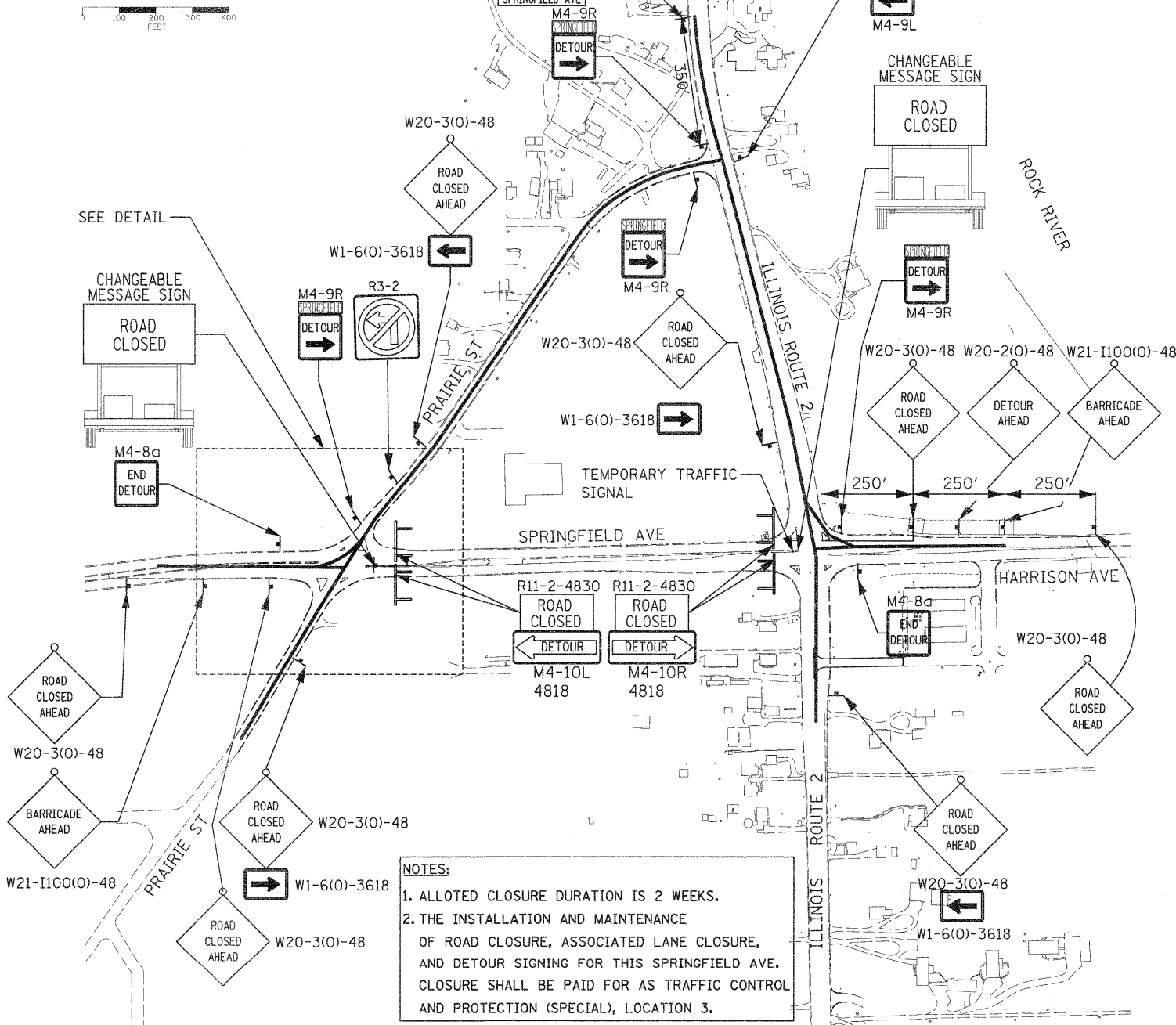
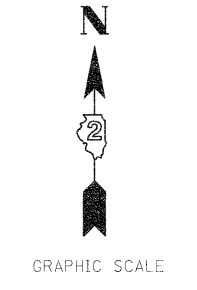


DETAIL

SEE TEMPORARY TRAFFIC SIGNAL PLANS



NOTES:
 1. ALLOTTED CLOSURE DURATION IS 2 WEEKS.
 2. THE INSTALLATION AND MAINTENANCE OF ROAD CLOSURE, ASSOCIATED LANE CLOSURE, AND DETOUR SIGNING FOR THIS SPRINGFIELD AVE. CLOSURE SHALL BE PAID FOR AS TRAFFIC CONTROL AND PROTECTION (SPECIAL), LOCATION 3.

**SUB STAGE 2A
 SPRINGFIELD AVENUE
 ROAD CLOSURE DETOUR TRAFFIC CONTROL**

FILE NAME = D201500-eh1-staging47_IL2-Detour_PRAIRIE	USER NAME = TERRA	DESIGNED - BCB	REVISED -
PLCT SCALE = 200.0000' / IN.	PLCT DATE = 1/17/2012	DRAWN - CBC	REVISED -
		CHECKED - DPA	REVISED -
		DATE - 01/17/12	REVISED -

**STATE OF ILLINOIS
 DEPARTMENT OF TRANSPORTATION**

MAINTENANCE OF TRAFFIC PLAN			
SPRINGFIELD AVE ROAD CLOSURE DETOUR TRAFFIC CONTROL			
SCALE:	SHEET NO. OF SHEETS	STA. TO STA.	

F.A. RTE. 742	SECTION 34R	COUNTY WINNEBAGO	TOTAL SHEETS 491	SHEET NO. 156
CONTRACT NO. 64515				
ILLINOIS FED. AID PROJECT				