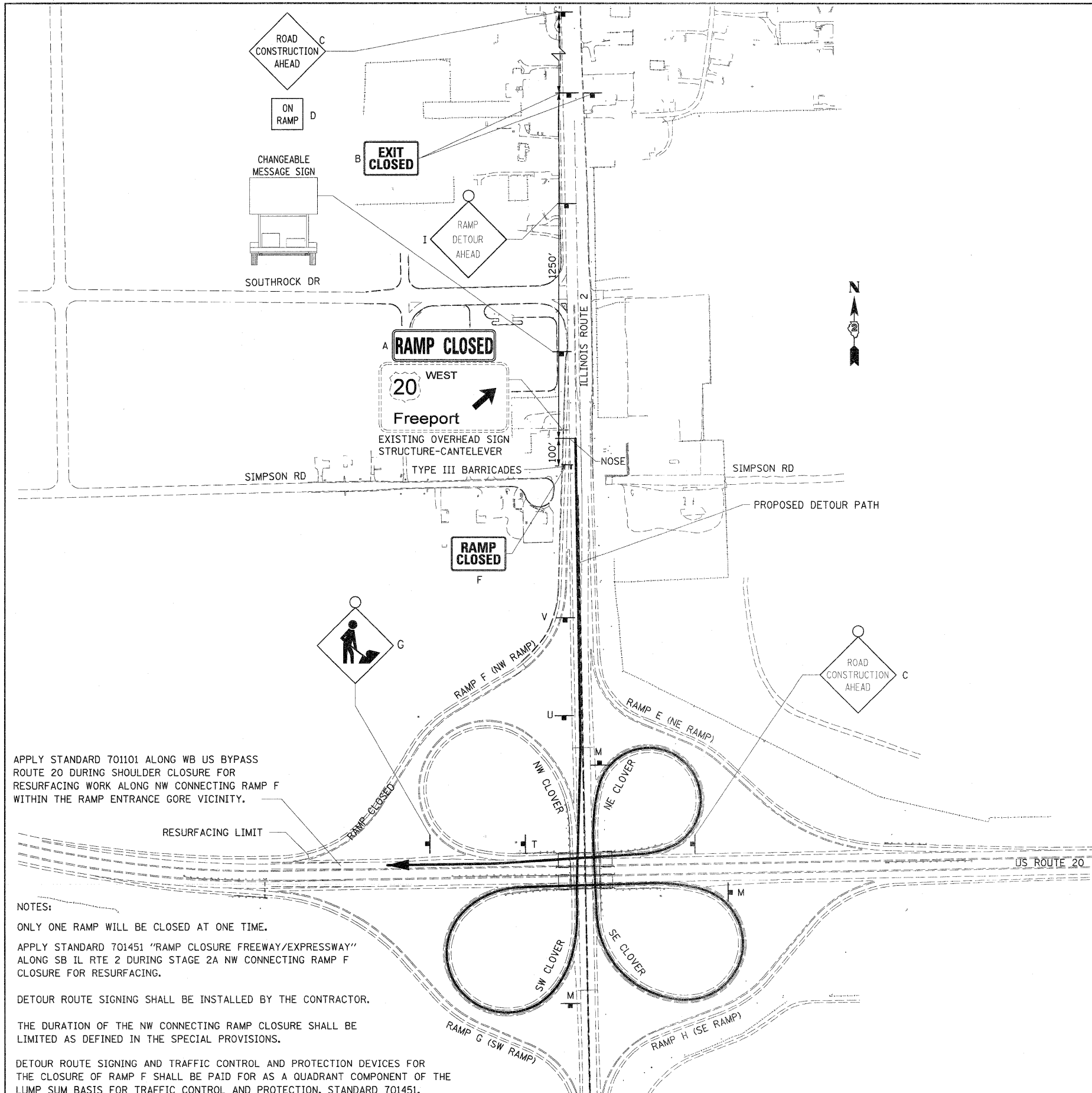


TRAFFIC CONTROL PLAN FOR RAMP F (NW RAMP) CLOSURE



APPLY STANDARD 701101 ALONG WB US BYPASS ROUTE 20 DURING SHOULDER CLOSURE FOR RESURFACING WORK ALONG NW CONNECTING RAMP F WITHIN THE RAMP ENTRANCE GORE VICINITY.

NOTES:
 ONLY ONE RAMP WILL BE CLOSED AT ONE TIME.
 APPLY STANDARD 701451 "RAMP CLOSURE FREEWAY/EXPRESSWAY" ALONG SB IL RTE 2 DURING STAGE 2A NW CONNECTING RAMP F CLOSURE FOR RESURFACING.
 DETOUR ROUTE SIGNING SHALL BE INSTALLED BY THE CONTRACTOR.
 THE DURATION OF THE NW CONNECTING RAMP CLOSURE SHALL BE LIMITED AS DEFINED IN THE SPECIAL PROVISIONS.
 DETOUR ROUTE SIGNING AND TRAFFIC CONTROL AND PROTECTION DEVICES FOR THE CLOSURE OF RAMP F SHALL BE PAID FOR AS A QUADRANT COMPONENT OF THE LUMP SUM BASIS FOR TRAFFIC CONTROL AND PROTECTION, STANDARD 701451.

LEGEND:

- A. **RAMP CLOSED** (SEE TEMPORARY SIGN DETAILS SHEET # 49)
- B. **EXIT CLOSED** E5-2a-4836
- C. **ROAD CONSTRUCTION AHEAD** W20-1103(O)-48
- D. **ON RAMP** W13-4-1818
- E. **ROAD CLOSED** R11-2
- F. **RAMP CLOSED**
- G. **RAMP DETOUR AHEAD** W21-1a(O)-48
- H. **TO** M4-5-3015
NORTH M3-1-3015
ILLINOIS 2 M1-1100-(36)
↑ M6-3-3018
- I. **RAMP DETOUR AHEAD** 48"
- J. **TO** M4-5-3015
NORTH M3-1-3015
ILLINOIS 2 M1-1100(36)
↗ M6-2-3018
- K. **TO** M4-5-3015
NORTH M3-1-3015
ILLINOIS 2 M1-1100(36)
↗ M5-2R-3018
- L. **TO** M4-5-3015
WEST M3-4-3015
20 M1-4-36
↑ M6-3-3018
- M. **TO** M4-5-3015
WEST M3-4-3015
20 M1-4-36
↗ M6-2-3018
- N. **TO** M4-5-3015
EAST M3-2-3015
20 M1-4-36
↗ M6-2-3018
- O. **TO** M4-5-3015
WEST M3-4-3015
20 M1-4-36
↗ M5-2R-3018
- P. **TO** M4-5-3015
EAST M3-2-3015
20 M1-4-36
↑ M6-3-3018
- Q. **TO** M4-5-3015
SOUTH M3-3-3015
ILLINOIS 2 M1-1100-(36)
↑ M6-3-3018
- R. **TO** M4-5-3015
SOUTH M3-3-3015
ILLINOIS 2 M1-1100(36)
↗ M6-2-3018
- S. **TO** M4-5-3015
SOUTH M3-3-3015
ILLINOIS 2 M1-1100(36)
↗ M5-2R-3018
- T. **END DETOUR** M4-8a
- U. **SPECIAL SIGN (AA)**
RAMP DETOUR
- V. **TO** M4-5-3015
EAST M3-2-3015
20 M1-4-36
↗ M5-2R-3018

FILE NAME = 0201500-eh-t-staging43-NW-RAMP.dgn	USER NAME = TERRA	DESIGNED - BCB	REVISED -	STATE OF ILLINOIS DEPARTMENT OF TRANSPORTATION	MAINTENANCE OF TRAFFIC PLAN STAGE 2A RAMP F (NW RAMP) CLOSURE DETOUR TRAFFIC CONTROL				F.A. RTE. 742	SECTION 34R	COUNTY WINNEBAGO	TOTAL SHEETS 491	SHEET NO. 160
	PLOT SCALE = 200.0000' / IN.	DRAWN - CBC	REVISED -		SCALE:	SHEET NO.	OF SHEETS	STA.	TO STA.	CONTRACT NO. 64515			
	PLOT DATE = 1/16/2012	CHECKED - DPA	REVISED -		ILLINOIS FED. AID PROJECT								
		DATE - 01/17/12	REVISED -										