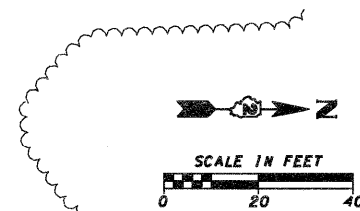
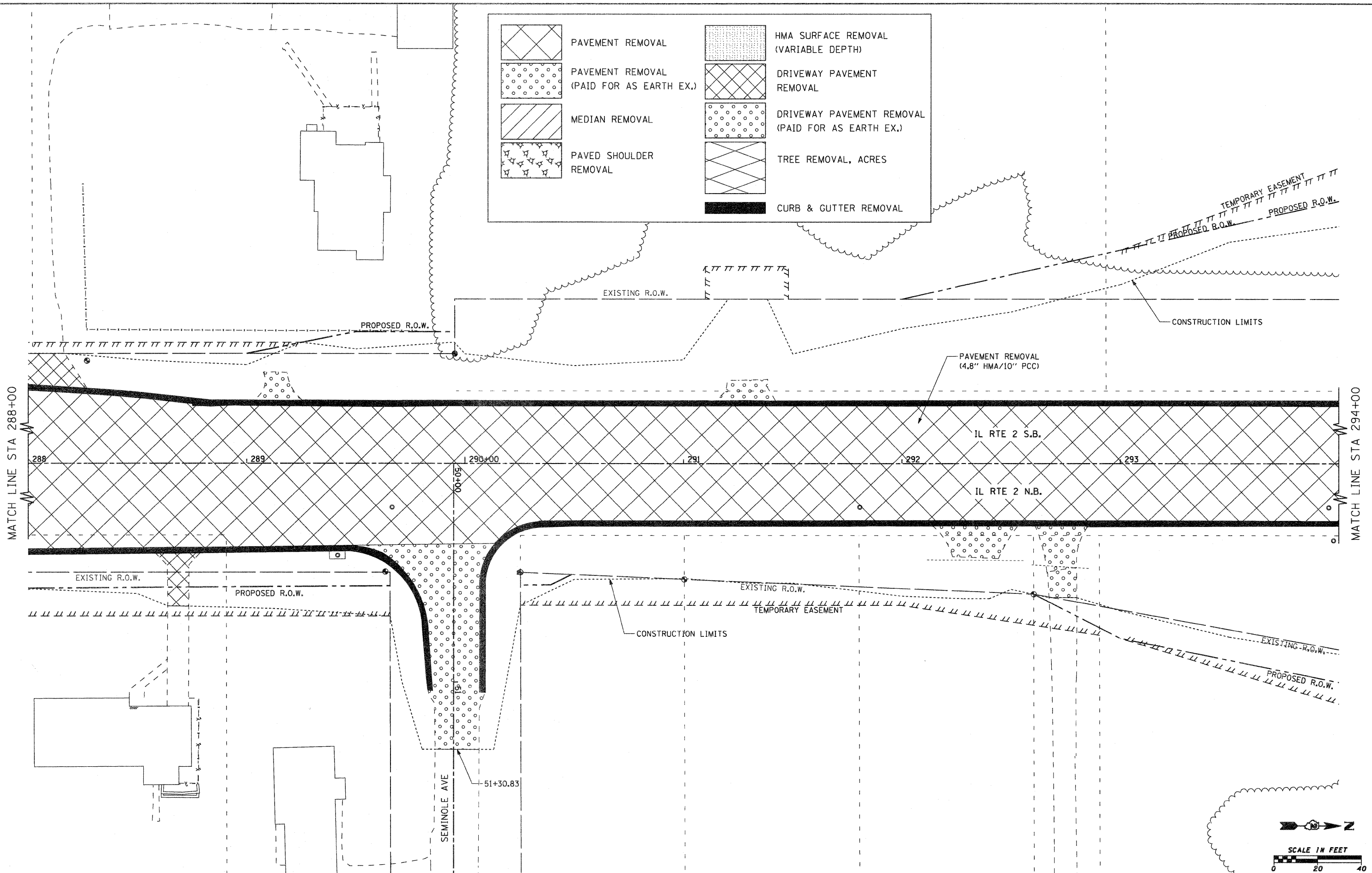


	PAVEMENT REMOVAL		HMA SURFACE REMOVAL (VARIABLE DEPTH)
	PAVEMENT REMOVAL (PAID FOR AS EARTH EX.)		DRIVEWAY PAVEMENT REMOVAL
	MEDIAN REMOVAL		DRIVEWAY PAVEMENT REMOVAL (PAID FOR AS EARTH EX.)
	PAVED SHOULDER REMOVAL		TREE REMOVAL, ACRES
			CURB & GUTTER REMOVAL



FILE NAME = g:\2010\trans\b18\001\dgn\removal plans\	USER NAME = pcp	DESIGNED -	REVISED -	STATE OF ILLINOIS DEPARTMENT OF TRANSPORTATION	FAP 742 (IL 2) REMOVAL PLAN	F.A.P. RTE. 742	SECTION 34R	COUNTY WINNEBAGO	TOTAL SHEETS 491	SHEET NO. 236		
12\081500 REM IL2 13.dgn	PLOT SCALE = 20,0000' / IN.	DRAWN -	REVISED -			SCALE: 1" = 20'	SHEET NO. OF SHEETS	STA. 288+00.00 TO STA. 294+00.00	CONTRACT NO. 64515			
	PLOT DATE = 1/26/2012	CHECKED -	REVISED -			ILLINOIS FED. AID PROJECT						
		DATE -	REVISED -									