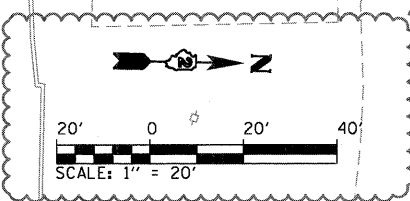
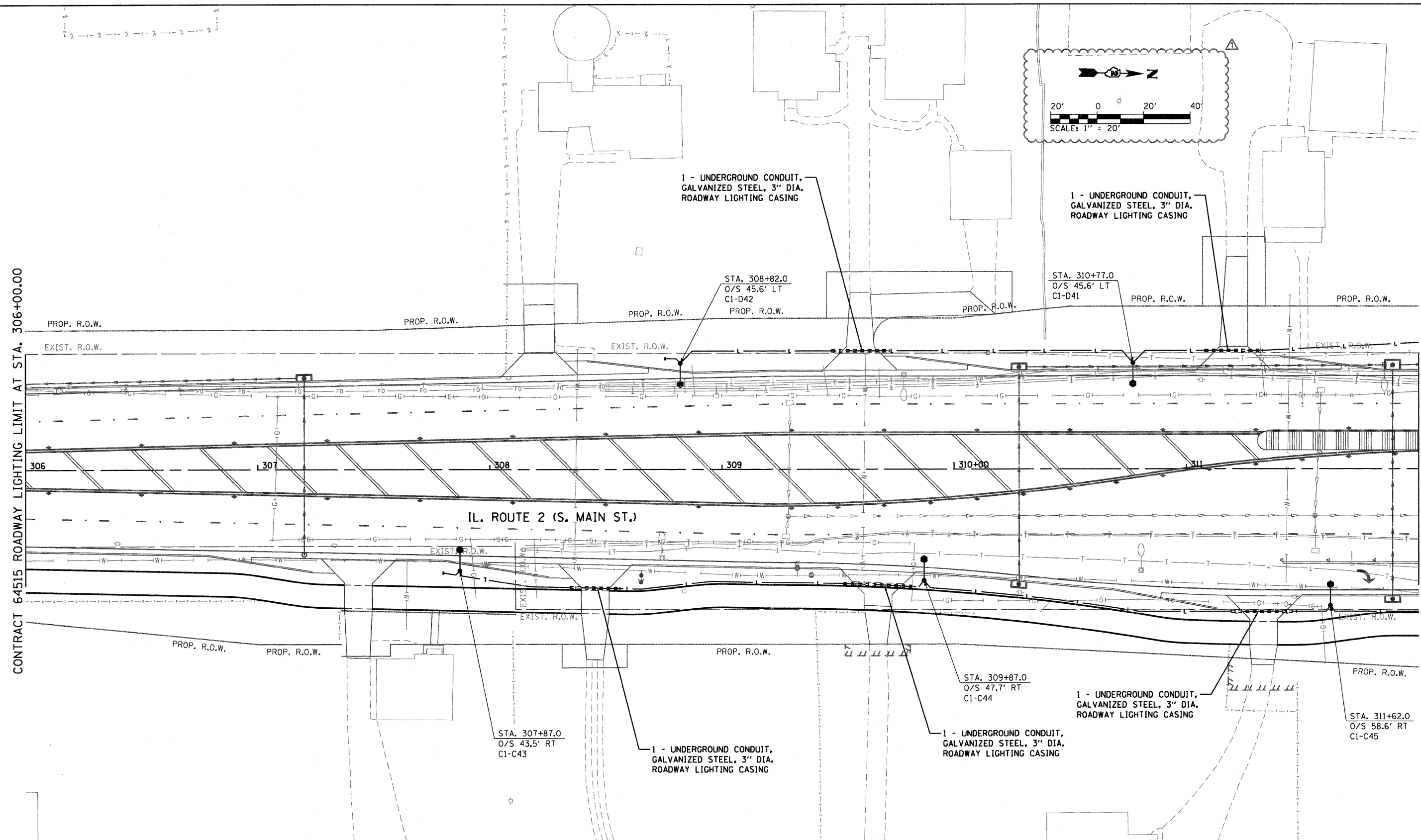


CONTRACT 64515 ROADWAY LIGHTING LIMIT AT STA. 306+00.00

MATCH LINE 312+00.00



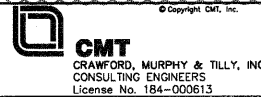
**LEGEND**

	EXISTING ROADWAY LIGHTPOLE AND LUMINAIRE TO BE REMOVED, SALVAGE
	PROPOSED DECORATIVE LIGHT POLE AND LUMINAIRE ALUMINUM, 40 FT. M.H., PULSE START METAL HALIDE, HORIZONTAL MOUNT 400 WATT (SEE NOTE 13 ON SHEET 301)
	PROPOSED UNDERGROUND CONDUIT, HDPE SDR-11, 1 1/2\"/>

	PROPOSED UTILITY POLE (BY OTHERS)
	PROPOSED LIGHTING CONTROLLER, 100 AMP, 480V
	HH = PROPOSED HANDHOLE PER IDOT STD 814001 CHH = PROPOSED HANDHOLE, COMPOSITE CONCRETE TYPE AS INDICATED

	PROPOSED UNDERGROUND CONDUIT, GALVANIZED STEEL, BORED AND PULLED, SIZE AND CONDUCTORS AS INDICATED.
	PROPOSED UNIT DUCT, 600V, 2-1C NO.6, 1/C NO.6 GROUND, (XLP-TYPE USE), 1/4\"/>
	PROPOSED UNDERGROUND CONDUIT, COILABLE NONMETALLIC CONDUIT, 2\"/>
	PROPOSED UNDERGROUND CONDUIT, GALVANIZED STEEL, SIZE AND CONDUCTORS AS INDICATED

**NOTES:**  
1. REFER TO ROADWAY LIGHTING NOTES ON SHEET 301.



USER NAME = Jason Dove	DESIGNED - AS	REVISED - 04/17/2012
FILE NAME = D264515-shrt-light102.dgn	DRAWN - JWD	REVISED -
PLOT SCALE = 20.0000' / 1\"/>		
PLOT DATE = 4/18/2012 - 6:14:28 PM	CHECKED - AB	REVISED -
	DATE - 01/25/2012	REVISED -

**STATE OF ILLINOIS  
DEPARTMENT OF TRANSPORTATION**

**ROADWAY LIGHTING PLAN  
F.A.P. 742 (IL RTE 2)**

SCALE: 1" = 20'    SHEET 2 OF 20 SHEETS    STA. 306+00 TO STA. 312+00

F.A.P. RTE.	SECTION	COUNTY	TOTAL SHEETS	SHEET NO.
742	34R	WINNEBAGO	491	302
CONTRACT NO. 64515				
ILLINOIS FED. AID PROJECT				

DIRECTORY = L:\ROCKFORD\1126904\CD-CADD\_Sheets\0264515\_Missman\