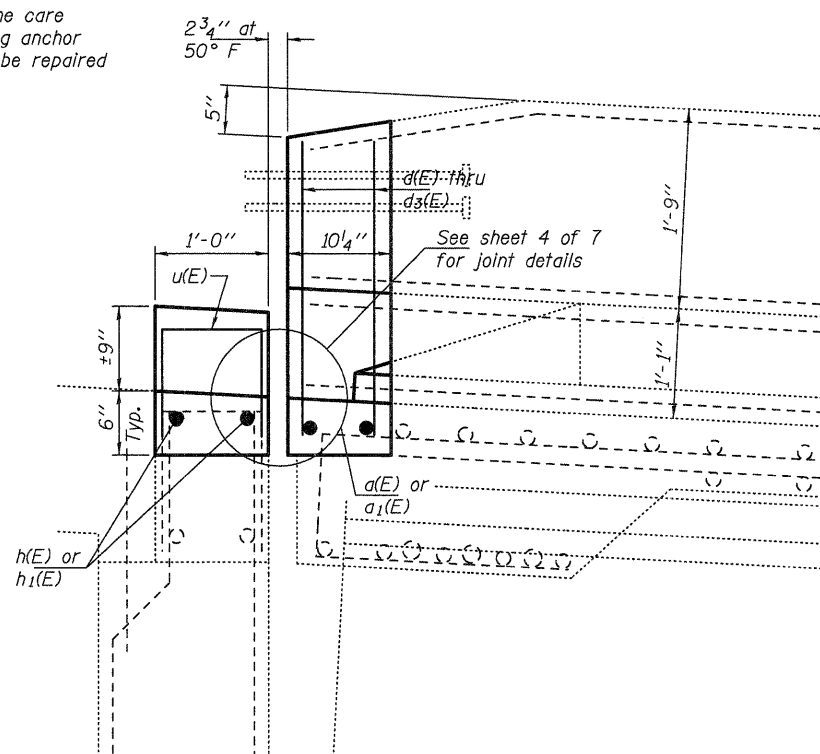
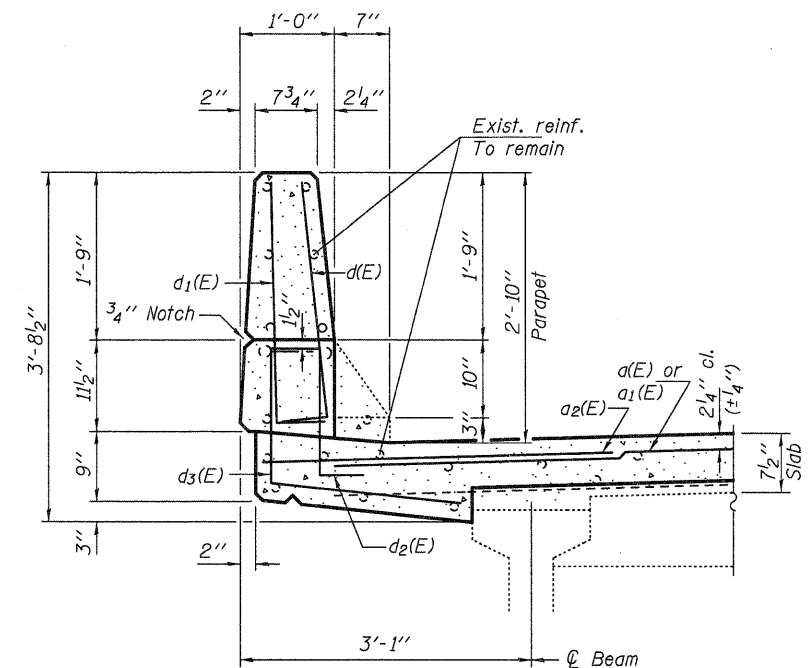


SECTION A-A

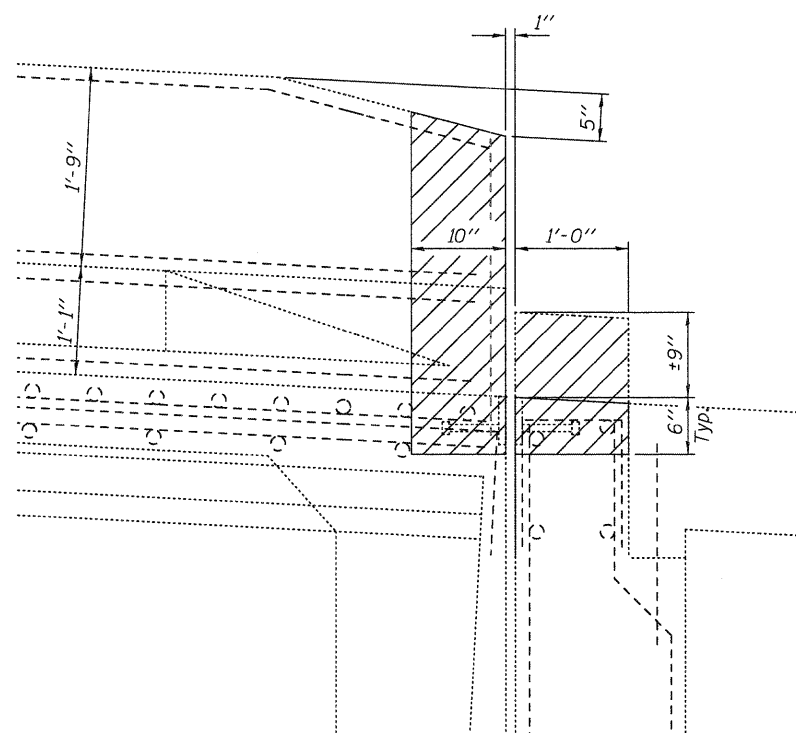
Contractor shall exercise extreme care so as to not damage the existing anchor bolts. Any damage caused shall be repaired at the contractor's expense.



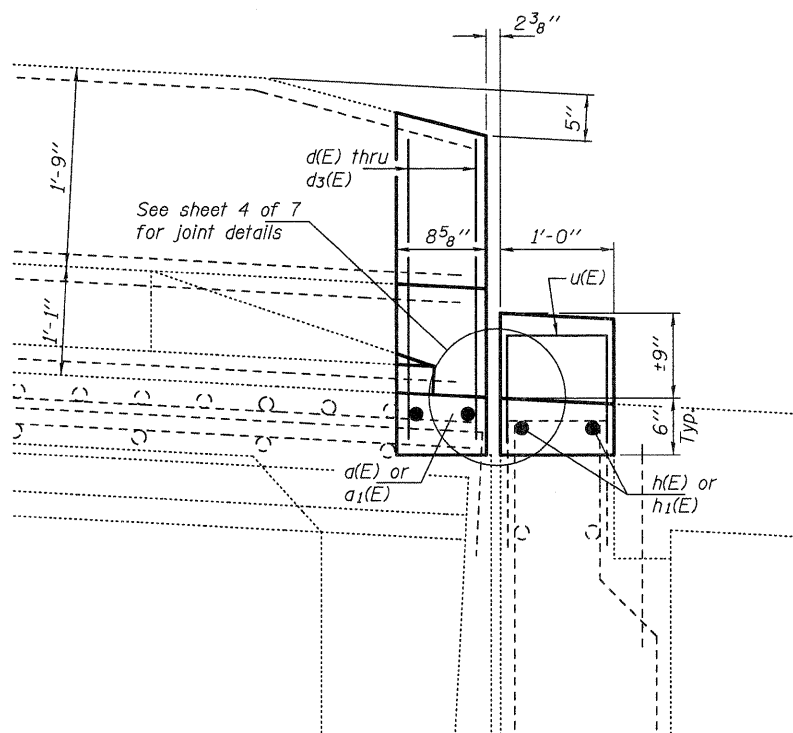
SECTION B-B



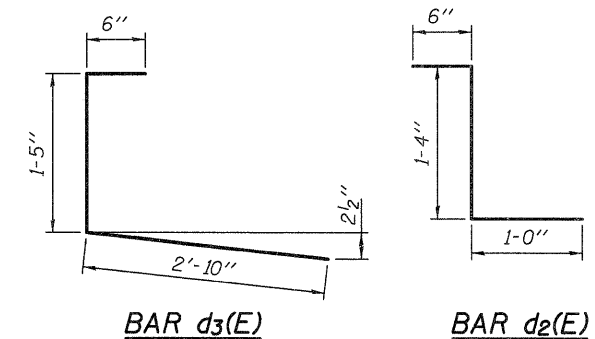
SECTION THRU PARAPET



SECTION C-C

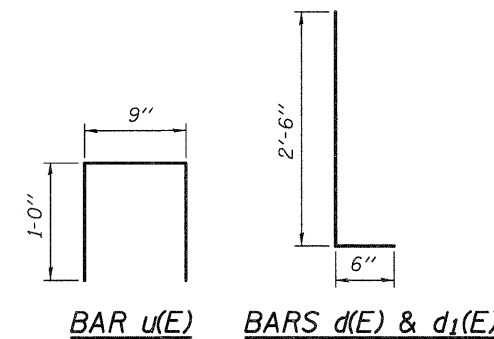


SECTION D-D



BAR d3(E)

BAR d2(E)



BAR u(E)

BARS d(E) & d1(E)

BILL OF MATERIAL

Bar	No.	Size	Length	Shape
d(E)	8	#5	19'-6"	—
a1(E)	8	#5	21'-6"	—
a2(E)	16	#6	4'-0"	—
d(E)	16	#5	3'-0"	L
d1(E)	16	#4	3'-0"	L
d2(E)	16	#5	2'-10"	L
d3(E)	16	#4	4'-9"	L
h(E)	8	#6	20'-0"	—
h1(E)	8	#6	22'-1"	—
u(E)	16	#4	2'-9"	U
Concrete Removal			Cu. Yd.	6.8
Concrete Superstructure			Cu. Yd.	6.6
Reinforcement Bars, Epoxy Coated			Pounds	1150

DESIGNED IJL
 CHECKED ADY
 DRAWN baliva
 CHECKED IJL ADY

EXAMINED *Jayne F. J...*
 ACTING ENGINEER OF STRUCTURAL SERVICES
 PASSED *Carl...*
 ACTING ENGINEER OF BRIDGES AND STRUCTURES

DATE MAY 1, 2012
 REVISED
 REVISED

STATE OF ILLINOIS
 DEPARTMENT OF TRANSPORTATION

REPAIR DETAILS
 SN 101-0154 (SB) & 101-0158 (NB)

SHEET NO. 3 OF 7 SHEETS

F.A.S. RTE. 1042	SECTION 11B, 1BR, 1BR-2RM	COUNTY WINNEBAGO	TOTAL SHEETS 31	SHEET NO. 9
				CONTRACT NO. 64H75
ILLINOIS FED. AID PROJECT				