

F.A.P. RTE.	SECTION	COUNTY	TOTAL SHEETS	SHEET NO.
738	(5B-2)M-1	WINNEBAGO	9	1
		ILLINOIS	CONTRACT NO. 64H93	

STATE OF ILLINOIS  
DEPARTMENT OF TRANSPORTATION  
DIVISION OF HIGHWAYS

# PROPOSED HIGHWAY PLANS

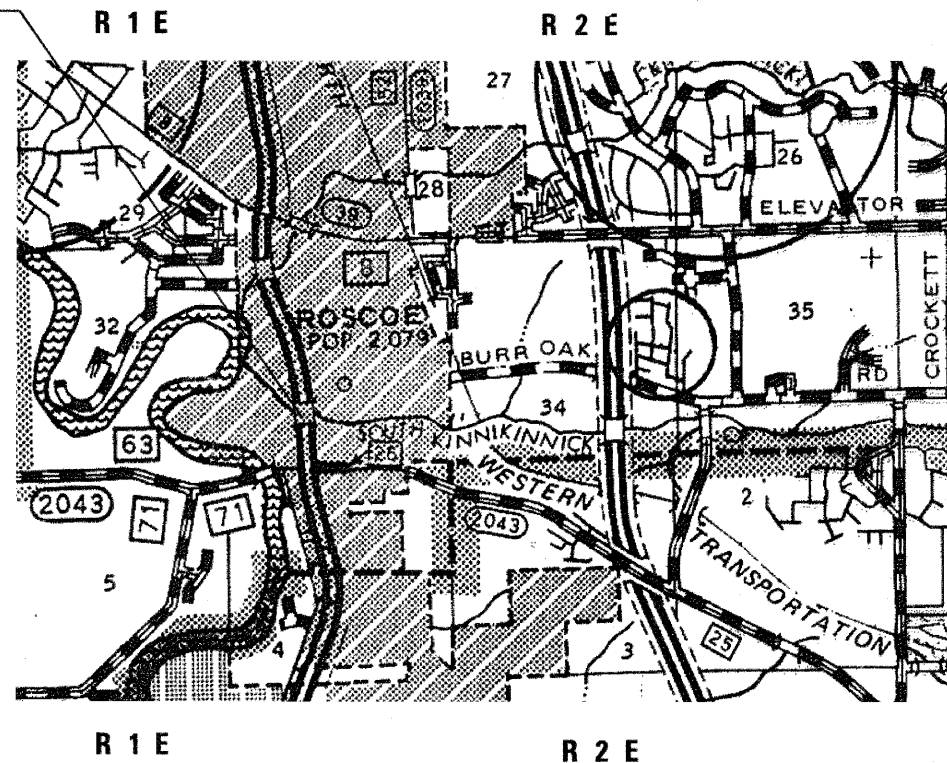
FAP 738 (IL 251)  
(5B-2)M-1  
Bridge Repair Scour Protection  
WINNEBAGO COUNTY

C-92-124-12

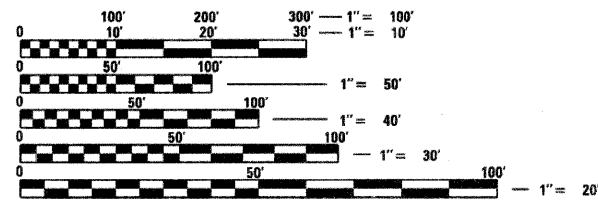
FOR INDEX OF SHEETS, SEE SHEET NO. 2

### Project Location

Structure No. 101-0037  
101-0038



LOCATION OF SECTION INDICATED THUS: - [black rectangle] -



FULL SIZE PLANS HAVE BEEN PREPARED USING STANDARD ENGINEERING SCALES. REDUCED SIZED PLANS WILL NOT CONFORM TO STANDARD SCALES. IN MAKING MEASUREMENTS ON REDUCED PLANS, THE ABOVE SCALES MAY BE USED.

J.U.L.I.E.  
JOINT UTILITY LOCATION INFORMATION FOR EXCAVATION  
1-800-892-0123  
OR 811

PROJECT ENGINEER: MAHMOUD ETEMADI 815/284-5393

Gross Length = 100 FT = .019 Mile  
Net Length = 100 ft = .019 Mile

STATE OF ILLINOIS  
DEPARTMENT OF TRANSPORTATION  
DIVISION OF HIGHWAYS

SUBMITTED April 25 2012  
*Eric S. Theutshen*  
DEPUTY DIRECTOR OF HIGHWAYS, REGION ENGINEER

May 11 2012  
*John D. Baramelli, P.E.*  
acting ENGINEER OF DESIGN AND ENVIRONMENT

May 11 2012  
*William R. Frey, Jr.*  
acting DIRECTOR OF HIGHWAYS, CHIEF ENGINEER

PRINTED BY THE AUTHORITY  
OF THE STATE OF ILLINOIS

CONTRACT NO. 64H93