

F.A.I. RTE.	SECTION	COUNTY	TOTAL SHEETS	SHEET NO.
55	**	*	96	1
* LIVINGSTON & GRUNDY ILLINOIS		CONTRACT NO. 66C01		

** D3 IMPACT ATTENUATORS 2012-3

STATE OF ILLINOIS
DEPARTMENT OF TRANSPORTATION
DIVISION OF HIGHWAYS
PROPOSED
HIGHWAY PLANS

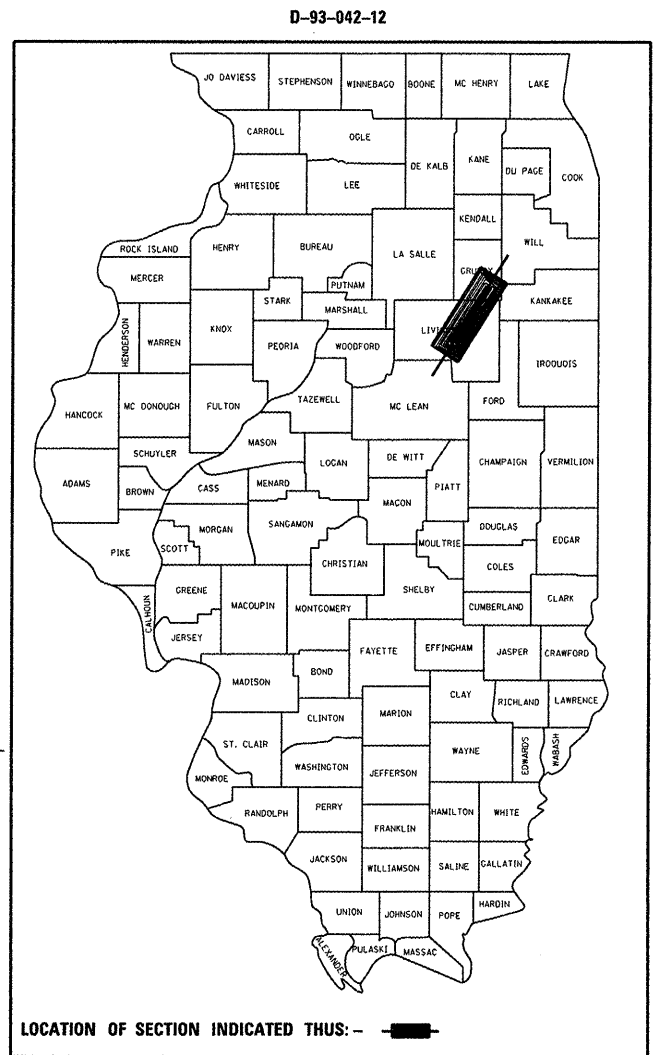
INDEX OF SHEETS

- 1 COVER SHEET
- 2 GENERAL NOTES
- 3-5 SUMMARY OF QUANTITIES
- 5-6 SCHEDULE OF QUANTITIES
- 7-8 LOCATION MAP
- 9 IMPACT ATTENUATOR LAYOUT AND GRADING PLAN
- 10-28 PIER CRASHWALL EXTENSION
- 29-96 CROSS SECTION

HIGHWAY STANDARDS

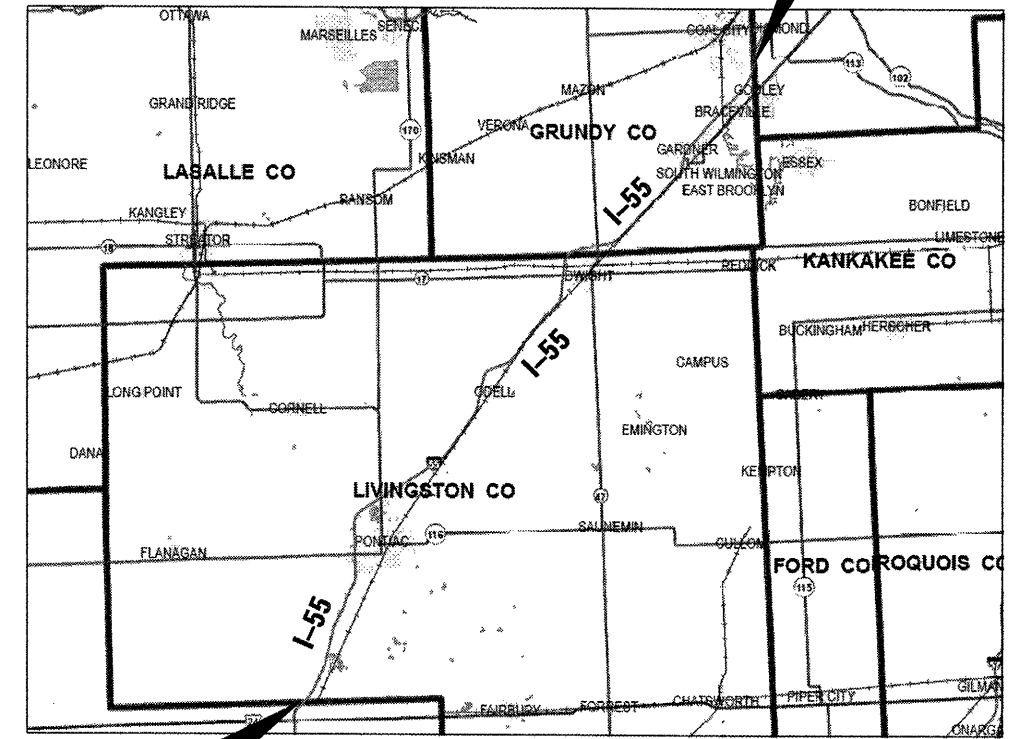
- 000001-06 STANDARD SYMBOLS, ABBREVIATIONS AND PATTERNS
- 001001-02 AREAS OF REINFORCEMENT BARS
- 001006 DECIMAL OF AN INCH AND OF A FOOT
- 280001-06 TEMPORARY EROSION CONTROL SYSTEMS
- 542401-01 METAL END SECTION FOR PIPE CULVERTS
- 643001 SAND MODULE IMPACT ATTENUATORS
- 701101-02 OFF-ROAD OPERATIONS MULTILANE, 15' (4.5 m) TO 24" (600 mm) FROM PAVEMENT EDGE
- 701106-02 OFF-ROAD OPERATIONS, MULTILANE, MORE THAN 15' (4.5 m) AWAY
- 701426-04 LANE CLOSURE, MULTILANE INTERMITTENT OR MOVING OPERATION, FOR SPEEDS ≥ 45 MPH
- 701456-02 PARTIAL EXIT RAMP CLOSURE FREEWAY/EXPRESSWAY
- 701901-02 TRAFFIC CONTROL DEVICES

FAI ROUTE 55 (I-55)
SECTION D3 IMPACT ATTENUATORS 2012-3
PROJECT : HSIP-055-5(112)187
INSTALL IMPACT ATTENUATORS
LIVINGSTON & GRUNDY COUNTIES

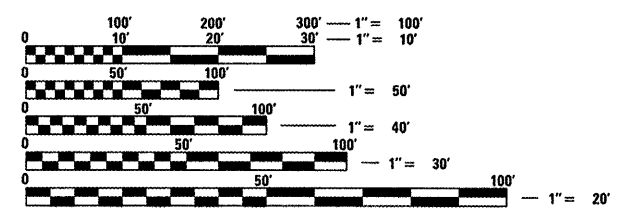


PROJECT DESCRIPTION
UPGRADE MEDIAN PIER CRASH WALL
& ATTENUATORS

SN	LOG MILE
053-0119	188.5
053-0122	191.3
053-0123	193.4
053-0116	196.6
053-0130	198.2
053-0115	200.5
053-0135	203.6
053-0113	208.0
053-0138	209.0
053-0112	210.1
053-0141 MED	214.9
053-0141 NB RT	214.9
053-0114	217.0
032-0077	218.9
032-0079	219.9
032-0078 MED	224.3
032-0078 NB RT	224.3
032-0093	226.9
032-0092	228.7
032-0090	231.0
032-0091	233.5



PROJECT ENDS I-55, MP 233.5
GRUNDY/WILL COUNTY LINE



FULL SIZE PLANS HAVE BEEN PREPARED USING STANDARD ENGINEERING SCALES. REDUCED SIZED PLANS WILL NOT CONFORM TO STANDARD SCALES. IN MAKING MEASUREMENTS ON REDUCED PLANS, THE ABOVE SCALES MAY BE USED.

J.U.L.I.E.
 JOINT UTILITY LOCATION INFORMATION FOR EXCAVATION
 1-800-892-0123
 OR 811

PROJECT BEGINS I-55, MP 188.0
LIVINGSTON/MCLEAN COUNTY LINE

21 SPOT SAFETY IMPROVEMENTS
 NET LENGTH = 240,240 FT. = 45.5 MILE

PROJECT ENGINEER CRAIG REED, P.E.
PROJECT MANAGER MARK JONES, P.E.

CONTRACT NO. 66C01

ROAD CLASSIFICATION: INTERSTATE
MCLEAN CO LINE TO PONTIAC: 2009 ADT = 21,100
PV = 78%, SU = 3%, MU = 19%
PONTIAC TO DWIGHT: 2009 ADT = 18,700
PV = 68%, SU = 4%, MU = 16%
DWIGHT TO WILL CO LINE: 2009 ADT = 21,400
PV = 75%, SU = 4%, MU = 21%

STATE OF ILLINOIS
 DEPARTMENT OF TRANSPORTATION
 DIVISION OF HIGHWAYS

SUBMITTED 3-30 2012
Eric S. Therkelsen
 DEPUTY DIRECTOR OF HIGHWAYS, REGION ENGINEER

May 11 2012
John D. Baranzelli, P.E.
 acting ENGINEER OF DESIGN AND ENVIRONMENT

May 11 2012
William R. Frey, Jr.
 acting DIRECTOR OF HIGHWAYS, CHIEF ENGINEER

PRINTED BY THE AUTHORITY
OF THE STATE OF ILLINOIS