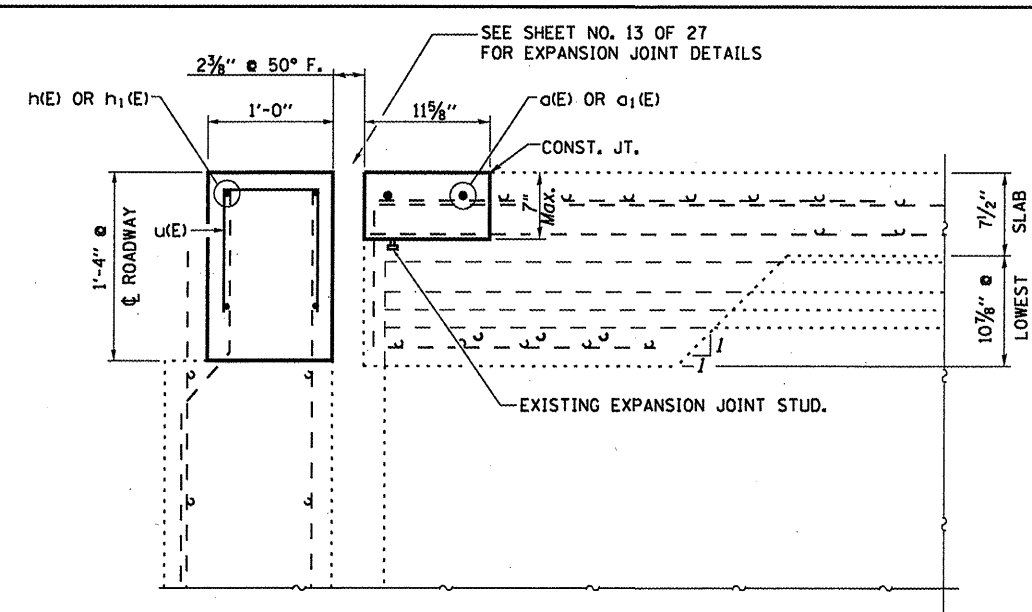


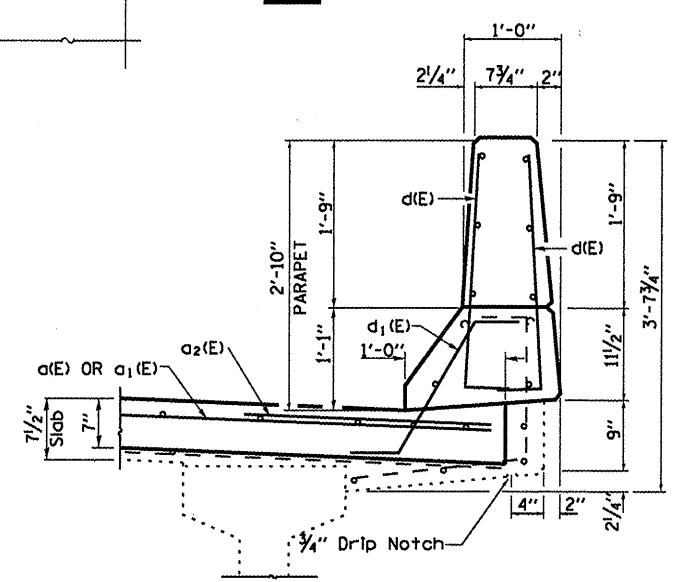
PLAN
WEST ABUTMENT SHOWN
EAST ABUTMENT SIMILAR THRU 180 ROTATION



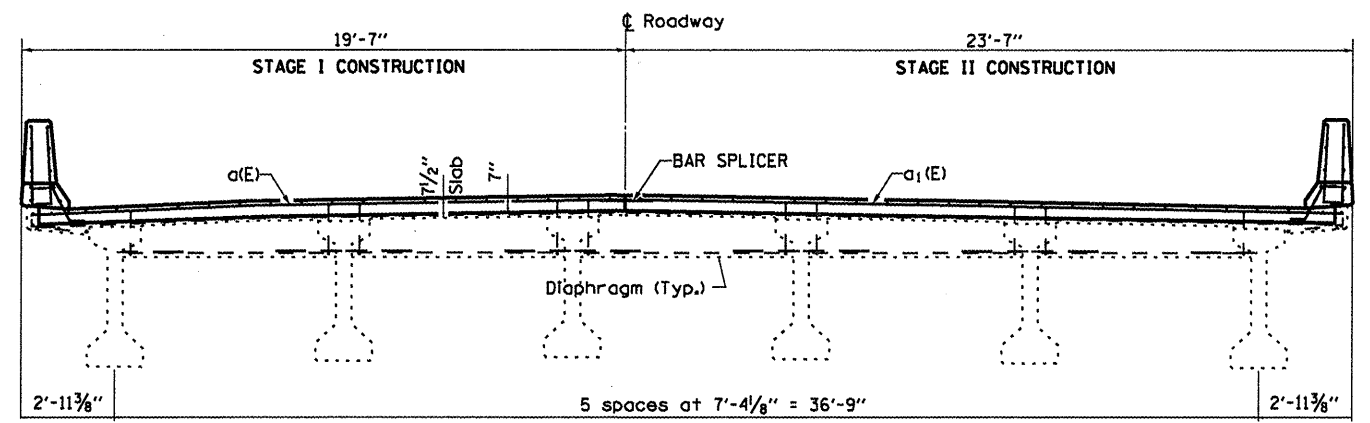
SECTION B-B
 Measurements at Right L's

BILL OF MATERIAL
 SN 032-0009 (E.B.)

Bar	No.	Size	Length	Shape
a(E)	4	#7	19'-10"	▬
a1(E)	4	#7	24'-2"	▬
a2(E)	4	#6	4'-0"	▬
d(E)	12	#5	3'-0"	┘
d1(E)	6	#5	2'-7"	┘
h(E)	8	#6	18'-10"	▬
h1(E)	8	#6	23'-1"	▬
u(E)	86	#5	2'-9"	┘
Concrete Removal			Cu. Yd.	7.4
Concrete Superstructure			Cu. Yd.	7.4
Reinforcement Bars			Lbs.	1136
Epoxy Coated				



SECTION THRU PARAPET (TYP.)



CROSS SECTION AT WEST ABUTMENT
 LOOKING EAST

FILE NAME =	USER NAME = carpenterdj	DESIGNED - RLW	REVISED -
a:\pr.work\p\dot\carpenterdj\d0295002\0366C08-sht-details.dgn		DRAWN - RLW	REVISED -
PLOT SCALE = 1/8" = 1' / in.		CHECKED -	REVISED -
PLOT DATE = 4/5/2012		DATE -	REVISED -

STATE OF ILLINOIS
 DEPARTMENT OF TRANSPORTATION

SUPERSTRUCTURE CONSTRUCTION DETAILS FOR
 STRUCTURE NO. 032-0009 (EB)

SCALE: SHEET 3 OF 9 SHEETS STA. 1067+46.64 TO STA. 1068+90.49

F.A.I. RTE.	SECTION	COUNTY	TOTAL SHEETS	SHEET NO.
80	(32-2B)I-1	GRUNDY	27	12
			CONTRACT NO. 66C08	
ILLINOIS FED. AID PROJECT				