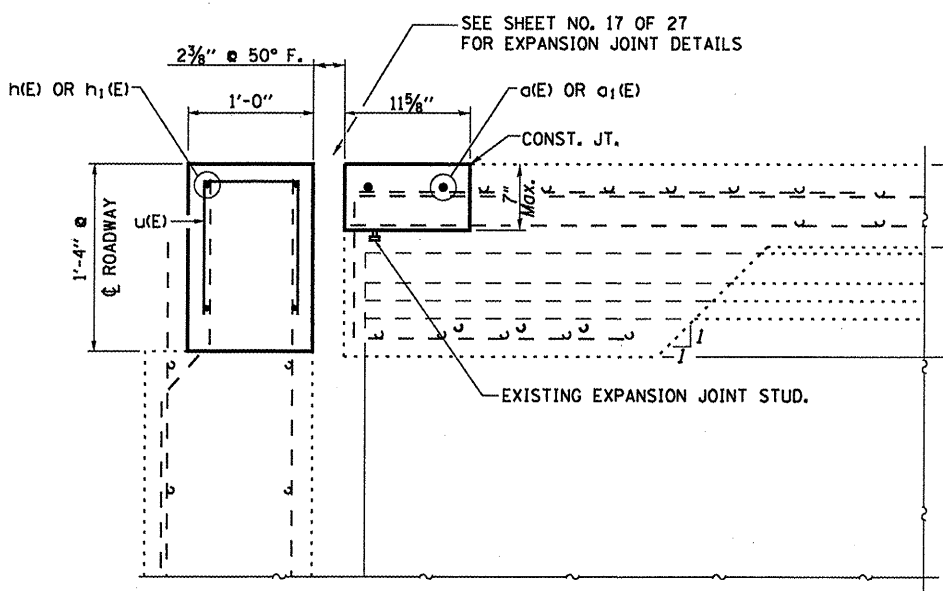


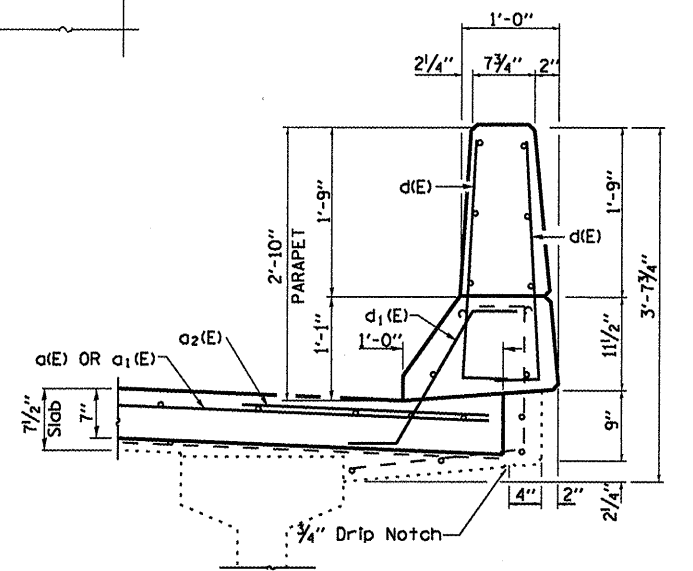
PLAN
WEST ABUTMENT SHOWN
EAST ABUTMENT SIMILAR THRU 180 ROTATION



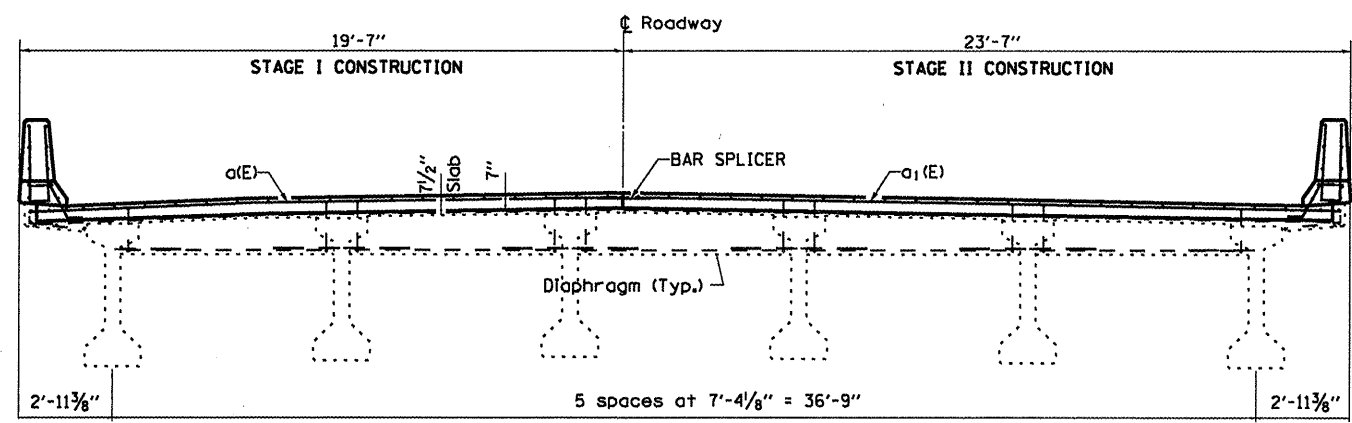
SECTION D-D
Measurements at Right L's

BILL OF MATERIAL
SN 032-0010 (W.B.)

Bar	No.	Size	Length	Shape
a(E)	4	#7	19'-10"	—
a1(E)	4	#7	24'-2"	—
a2(E)	4	#6	4'-0"	—
d(E)	12	#5	3'-0"	┌
d1(E)	6	#5	2'-7"	└
h(E)	8	#6	18'-10"	—
h1(E)	8	#6	23'-1"	—
u(E)	86	#5	2'-9"	—
Concrete Removal		Cu. Yd.	7.4	
Concrete Superstructure		Cu. Yd.	7.4	
Reinforcement Bars		Lbs.	1090	
Epoxy Coated				



SECTION THRU PARAPET (TYP.)



CROSS SECTION AT WEST ABUTMENT
LOOKING WEST

FILE NAME =	USER NAME = carpenterdj	DESIGNED - RLW	REVISED -
ct:\pwork\pwidat\carpenterdj\d0295082	3366C08-shd-detail1.dgn	DRAWN - RLW	REVISED -
	PLOT SCALE = 1/8" = 1' / in.	CHECKED -	REVISED -
	PLOT DATE = 4/5/2012	DATE -	REVISED -

STATE OF ILLINOIS
DEPARTMENT OF TRANSPORTATION

SUPERSTRUCTURE CONSTRUCTION DETAILS FOR
STRUCTURE NO. 032-0010 (WB)

SCALE: SHEET 7 OF 9 SHEETS | STA. 1067+69.94 TO STA. 1069+13.79

F.A.I. RTE. = 80	SECTION = (32-2B)1-1	COUNTY = GRUNDY	TOTAL SHEETS = 27	SHEET NO. = 16
			CONTRACT NO. 66C08	
ILLINOIS FED. AID PROJECT				