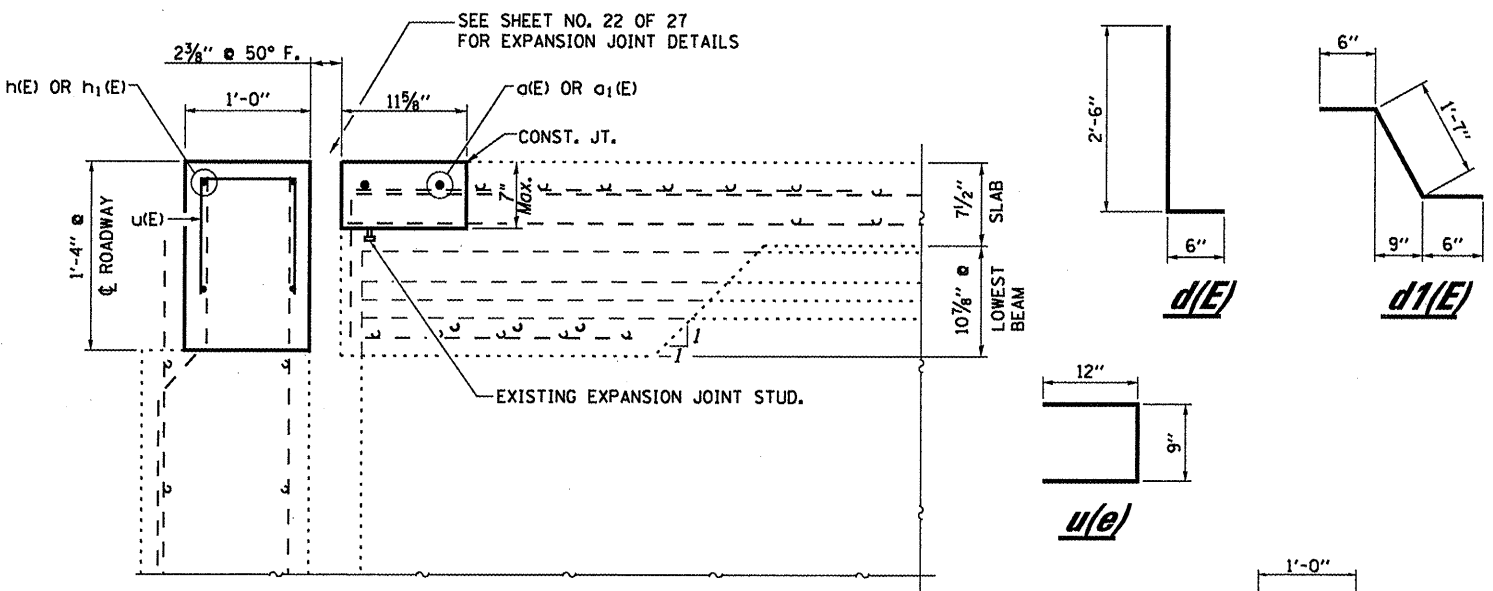


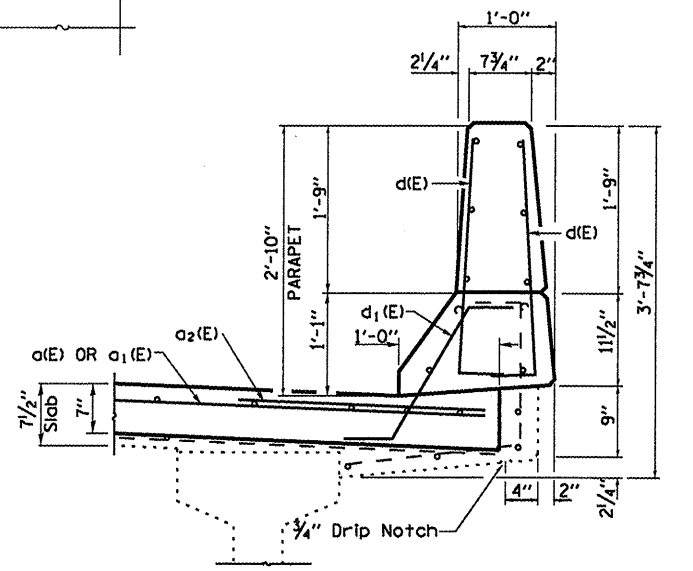
PLAN
WEST ABUTMENT SHOWN
EAST ABUTMENT SIMILAR THRU 180 ROTATION



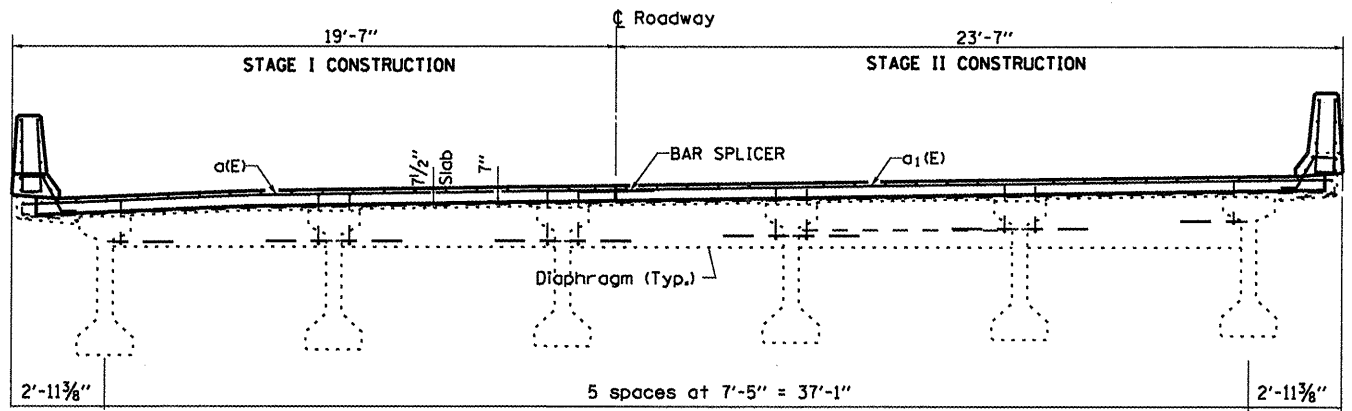
SECTION B-B
Measurements at Right L's

BILL OF MATERIAL
SN 032-0011 (E.B.)

Bar	No.	Size	Length	Shape
a(E)	4	#7	19'-5"	—
a1(E)	4	#7	23'-6"	—
a2(E)	4	#6	4'-0"	—
d(E)	12	#5	3'-0"	┌
d1(E)	6	#5	2'-7"	└
h(E)	8	#6	18'-4"	—
h1(E)	8	#6	22'-6"	—
u(E)	84	#5	2'-9"	—
Concrete Removal		Cu. Yd.	7.4	
Concrete Superstructure		Cu. Yd.	7.4	
Reinforcement Bars		Lbs.	1106	
				Epoxy Coated



SECTION THRU PARAPET (TYP.)



CROSS SECTION AT WEST ABUTMENT
LOOKING EAST