

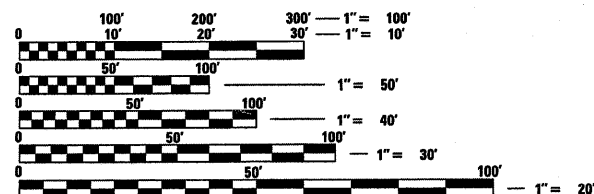
06-15-12 LETTING ITEM 121

INDEX OF SHEETS

- 1 COVER SHEET
- 2 GENERAL NOTES AND SUMMARY OF QUANTITIES
- 3 TYPICAL SECTIONS
- 4 SCHEDULE OF QUANTITIES
- 5-6 DETAILS

STANDARDS

- 000001-06 STANDARD SYMBOLS, ABBREVIATIONS AND PATTERNS
- 001006 DECIMAL OF AN INCH AND OF A FOOT
- 701400-05 APPROACH TO LANE CLOSURE, FREEWAY/EXPRESSWAY
- 701401-06 LANE CLOSURE, FREEWAY/EXPRESSWAY
- 701901-02 TRAFFIC CONTROL DEVICES
- 780001-03 TYPICAL PAVEMENT MARKINGS



FULL SIZE PLANS HAVE BEEN PREPARED USING STANDARD ENGINEERING SCALES. REDUCED SIZED PLANS WILL NOT CONFORM TO STANDARD SCALES. IN MAKING MEASUREMENTS ON REDUCED PLANS, THE ABOVE SCALES MAY BE USED.

J.U.L.I.E.
JOINT UTILITY LOCATION INFORMATION FOR EXCAVATION
1-800-892-0123
OR 811

PROJECT ENGINEER: JOE KANNEL, P.E.
UNIT CHIEF: PAT BRABOY

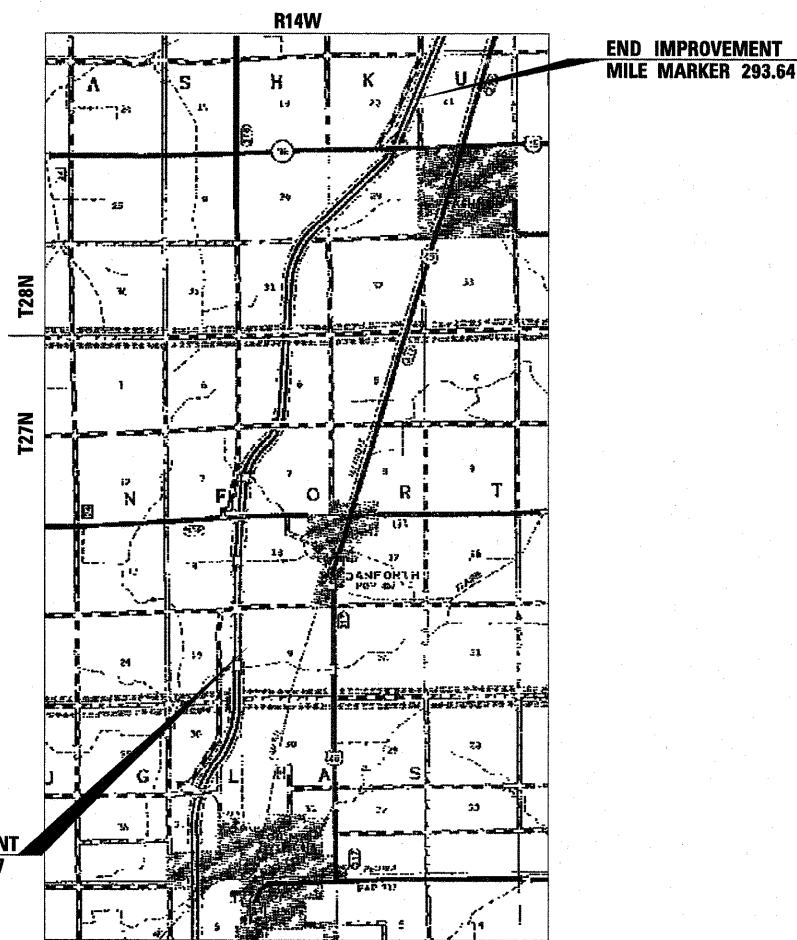
CONTRACT NO. 66C17

STATE OF ILLINOIS
DEPARTMENT OF TRANSPORTATION
DIVISION OF HIGHWAYS
**PROPOSED
HIGHWAY PLANS**

FAI ROUTE 57 (I-57)
SECTION (38-3,4)I-2

TYPE of IMPROVEMENT MICRO-SURFACING
IROQUOIS COUNTY

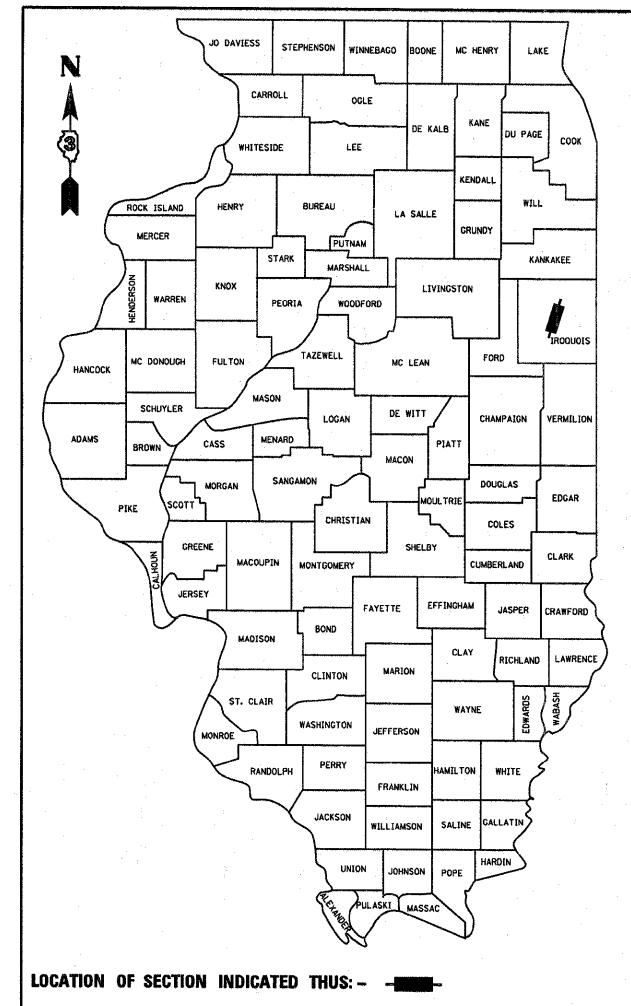
C-93-109-12



GROSS LENGTH = NET LENGTH = 41,923 FT. = 7.94 MILE

F.A.I. RTE.	SECTION	COUNTY	TOTAL SHEETS	SHEET NO.
57	(38-3,4)I-2	IROQUOIS	5	1
		ILLINOIS	CONTRACT NO. 66C17	

D-93-057-12



FUNCTIONAL CLASSIFICATION-INTERSTATE

2011 ADT = 18,200
P.V. = 67.0% S.U. = 4.6% M.U. = 28.4%

STATE OF ILLINOIS
DEPARTMENT OF TRANSPORTATION
DIVISION OF HIGHWAYS

SUBMITTED March 19 20 12
Eric S. Therkelsen
DEPUTY DIRECTOR OF HIGHWAYS, REGION ENGINEER

May 11 20 12
John D. Baramelli, P.E.
actgng ENGINEER OF DESIGN AND ENVIRONMENT

May 11 20 12
William R. Frey, Jr.
actgng DIRECTOR OF HIGHWAYS, CHIEF ENGINEER

PRINTED BY THE AUTHORITY
OF THE STATE OF ILLINOIS

GENERAL NOTES

THE ENGINEER WILL BE THE SOLE JUDGE CONCERNING CURING TIME FOR THE VARIOUS MICROSURFACING LIFTS.

SHORT TERM PAVEMENT MARKING SHALL BE USED TO OUTLINE EXIT AND ENTRANCE RAMPS FOR THE PRIME COAT APPLICATION AND EACH RESURFACING LIFT.

ANY REFERENCE TO A STANDARD IN THESE PLANS SHALL BE INTERPRETED TO MEAN THE EDITION AS INDICATED BY THE SUBNUMBER SHOWN IN THE LIST OF STANDARDS OR THE COPY INCLUDED IN THESE PLANS.

THE FOLLOWING RATES OF APPLICATION HAVE BEEN USED IN CALCULATING PLAN QUANTITIES:

SHORT TERM PAVEMENT MARKING	10	FT /100 FT OF APPLICATION
MIX FOR CRACKS, JTS & FLGWYS	0.0003	TONS / SQ YD
MICROSURFACING, SINGLE PASS	20	POUNDS/SQ YARD

BITUMINOUS MATERIALS (PRIME COAT) RATES		
SURFACE TYPE	ESTIMATED TRUCK APPLICATION RATE	RESIDUAL RATE
EXISTING PAVEMENT	0.08 GAL / SQ YD	0.025 GAL / SQ YD

ESTIMATED TRUCK APPLICATION RATE USED FOR CALCULATING PLAN QUANTITIES

THE AGGREGATES FOR THE SURFACE LIFT OF MICRO-SURFACING SHALL MEET THE REQUIREMENTS FOR MIXTURE D IN ARTICLE 1004.03(a)

100% STATE

SUMMARY OF QUANTITIES			
CODE NO.	ITEM	UNIT	CONSTR. CODE 0005 TOTAL
40600100	BITUMINOUS MATERIALS (PRIME COAT)	GALLON	2028
40600400	MIXTURE FOR CRACKS, JOINTS, AND FLANGEWAYS	TON	76
67100100	MOBILIZATION	L SUM	1
70106800	CHANGEABLE MESSAGE SIGN	CAL MO	1
70300100	SHORT-TERM PAVEMENT MARKING	FOOT	760
70300220	TEMPORARY PAVEMENT MARKING - LINE 4"	FOOT	19008
70301000	WORK ZONE PAVEMENT MARKING REMOVAL	SQ FT	253
78005110	EPOXY PAVEMENT MARKING - LINE 4"	FOOT	19008
78300100	PAVEMENT MARKING REMOVAL	SQ FT	6335
X0326867	RADAR SPEED TRAILER	CAL MO	1
X7010805	TRAFFIC CONTROL AND PROTECTION, STANDARD 701401(SPECIAL)	L SUM	1
X7830070	GROOVING FOR RECESSED PAVEMENT MARKING-5"	FOOT	19008
Z0063804	MICRO-SURFACING, SINGLE PASS, TYPE II, MIXTURE D	SQ YD	25344

* SPECIALTY ITEMS

STATE OF ILLINOIS
DEPARTMENT OF TRANSPORTATION
DISTRICT THREE

PREPARED BY: Don Bennett
DISTRICT STUDIES & PLANS ENGINEER

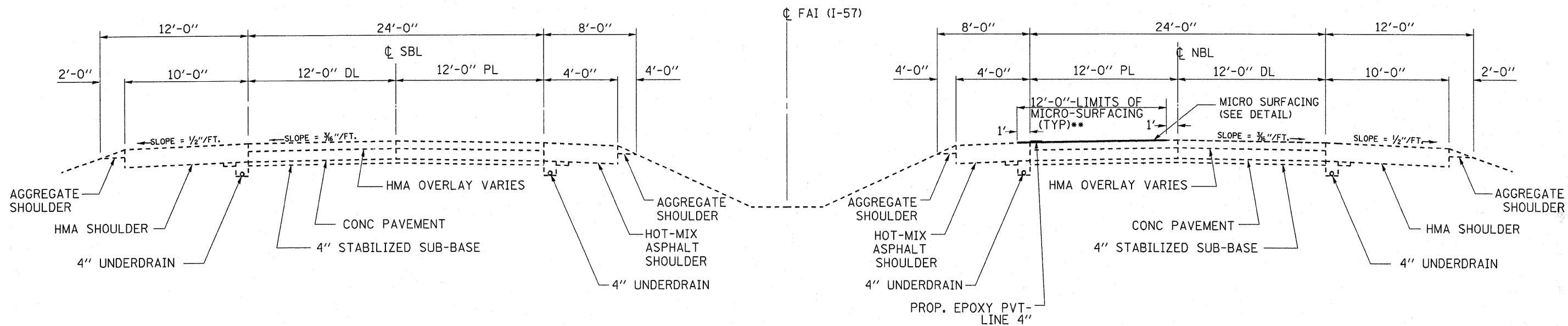
DATE: 3-14-12

EXAMINED BY: Harold Gray
DISTRICT CONSTRUCTION ENGINEER

Wayne J. Phillips
DISTRICT MATERIALS ENGINEER

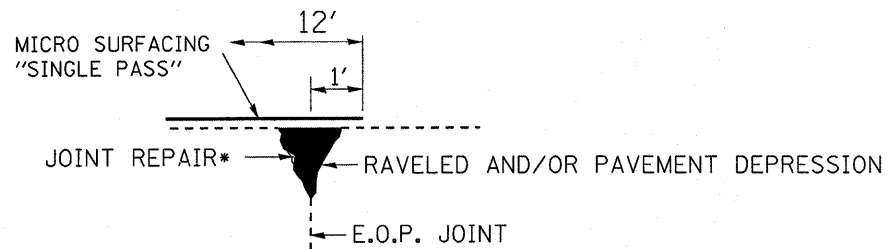
Bruce A. Huskins
DISTRICT OPERATIONS ENGINEER

FILE NAME =	USER NAME = monellysr	DESIGNED -	REVISED -	STATE OF ILLINOIS DEPARTMENT OF TRANSPORTATION	GENERAL NOTES AND SUMMARY OF QUANTITIES	F.A.I. RTE.	SECTION	COUNTY	TOTAL SHEETS	SHEET NO.	
ca\pwork\pwork\monellysr\d0299185\0366C17-sht-cover.dgn	PLOT SCALE = 50.0000' / in.	DRAWN -	REVISED -			57	(38-3,4)-2	IROQUOIS	5	2	
PLOT DATE = 3/13/2012	DATE -	CHECKED -	REVISED -			CONTRACT NO. 66C17		ILLINOIS FED. AID PROJECT			
		DATE -	REVISED -			SCALE: _____	SHEET NO. _____ OF _____ SHEETS	STA. _____ TO STA. _____			



TYPICAL SECTION

MM 285.7 TO MM 293.64
(LOOKING NORTH)



MICRO-SURFACING DETAIL

* MIXTURE FOR CRACKS, JOINTS, AND FLANGEWAYS

FILE NAME =	USER NAME = monallyer	DESIGNED -	REVISED -	STATE OF ILLINOIS DEPARTMENT OF TRANSPORTATION	TYPICAL SECTION		F.A.I. RTE.	SECTION	COUNTY	TOTAL SHEETS	SHEET NO.
ct\pwork\pwork\monallyer\d0299185\036617-sht-cover.dgn		DRAWN -	REVISED -		57	(30-3,4)-2	IRROUOIS	5	3		
PLOT SCALE = 50,0000 ' / in.		CHECKED -	REVISED -		CONTRACT NO. 66C17			FED. ROAD DIST. NO. - ILLINOIS FED. AID PROJECT			
PLOT DATE = 3/13/2012		DATE -	REVISED -		SCALE: _____	SHEET NO. _____ OF _____ SHEETS	STA. _____ TO STA. _____				

MAINLINE										
LOCATION MILE POST	PASSING LANE		BITUMINOUS MATERIALS (PRIME COAT)	EPOXY PAVEMENT MARKING - LINE 4"	PVT MARKING REMOVAL**	GROOVING FOR RECESSED PVT MK- 5"	TEMP PVT MARKING LINE 4****	SHORT TERM PVT MARKING*	WK ZONE PVT MK REMOVAL	MIX FOR CRACKS, JOINTS, & FLANGEWAYS
	LENGTH	MICRO- SURFACING SINGLE PASS TYPE II								
	FT	SQ YD								
		GALLON	FOOT	SQ FT	FOOT	FOOT	FOOT*	SQ FT	TON	
NBPL										
288.7-292.3	19008	25344	2028	19008	6335	19008	19008	760	253	76.0
TOTAL		25344	2028	19008	6335	19008	19008	760	253	76

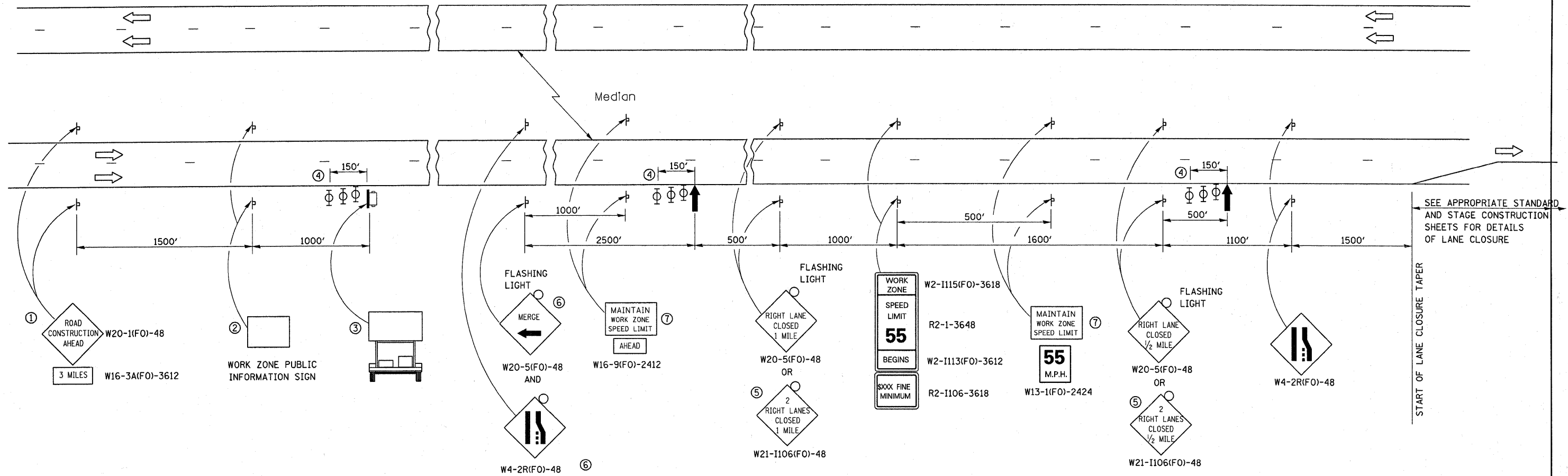
START PROJECT NORTH OF SN 038-0011

*PLACE A 4' DIAGONAL LINE EVERY 100' ON THE 4' MEDIAN SHOULDER

**REMOVE EXISTING PVT MK PRIOR TO MICROS-SURFACING OPERATION

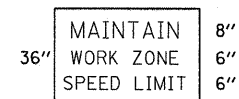
***ONLY USE IF THERE IS A DELAY OF APPLYING PERMANENT PVT MK LINE AFTER THE 7 DAY CURE PERIOD

FILE NAME =	USER NAME = monallysr	DESIGNED -	REVISED -	STATE OF ILLINOIS DEPARTMENT OF TRANSPORTATION	SCHEDULE OF QUANTITIES			F.A.I. RTE.	SECTION	COUNTY	TOTAL SHEETS	SHEET NO.
cr\pwork\pwork\monallysr\0299185\0366C17-sht-cover.dgn		DRAWN -	REVISED -		SCALE: _____	SHEET NO. _____ OF _____ SHEETS	STA. _____ TO STA. _____	57	38-3,401-2	ILLINOIS	5	4
	PLOT SCALE = 50.0000' / in.	CHECKED -	REVISED -									
	PLOT DATE = 3/13/2012	DATE -	REVISED -									
											CONTRACT NO. 66C17	
											FED. ROAD DIST. NO. [ILLINOIS] FED. AID PROJECT	



- ① THE ROAD CONSTRUCTION AHEAD SIGN SHALL BE LOCATED 3 MILES IN ADVANCE OF THE PROJECT LIMITS.
- ② THE MESSAGE AND SIZE OF THE WORK ZONE PUBLIC INFORMATION SIGN SHALL BE AS SPECIFIED BY THE DEPARTMENT.
- ③ TO BE PLACED IN THE MEDIAN WHEN FEASIBLE. THE MESSAGE BOARD SHALL BE USED TO DISPLAY STATUS OF LANES WITHIN THE PROJECT. THE PRIMARY MESSAGES SHALL BE:
 "RIGHT LANE CLOSED" / " x MILES AHEAD"
 "LEFT LANE CLOSED" / " x MILES AHEAD"
 "ALL LANES OPEN"
- ④ THREE, TYPE II BARRICADES, DRUMS, OR VERTICAL BARRICADES AT 50' CENTERS.
- ⑤ THIS SIGN SHALL BE USED WHEN 2 LANES ARE CLOSED.
- ⑥ WHEN THE LEFT LANE IS CLOSED, SWITCH THESE TWO SIGNS AND THE DIRECTION OF THE MERGE ARROW.

⑦ 48"x36" FLUORESCENT ORANGE SIGN WITH BLACK LETTERS.



- ↑ ARROW BOARD
- ☐ PORTABLE CHANGEABLE MESSAGE SIGN
- ⊥ SIGN
- ⊕ TYPE II BARRICADE, DRUM, OR VERTICAL BARRICADE WITH MONODIRECTIONAL FLASHING LIGHT

GENERAL NOTE:

THIS STANDARD IS USED WHERE AT ANY TIME A LANE IS CLOSED ON A FREEWAY/EXPRESSWAY.

WHEN THE LEFT LANE IS CLOSED, LEFT LANE CLOSED SIGNS SHALL BE SUBSTITUTED FOR THE RIGHT LANE CLOSED SIGNS.

THE FIRST TWO SIGNS AND THE MESSAGE BOARD ARE STATIONARY. THE OTHER SIGNS AND ARROWBOARDS SHALL BE MOVED AS NECESSARY TO MAINTAIN THE REQUIRED DISTANCE FROM THE START OF THE LANE CLOSURE TAPER(S).

SEE SPECIAL PROVISIONS.

ALL DIMENSIONS ARE IN INCHES UNLESS OTHERWISE SHOWN.

FILE NAME =	USER NAME = monallysr	DESIGNED -	REVISED -	STATE OF ILLINOIS DEPARTMENT OF TRANSPORTATION	STANDARD 701400 (SPECIAL)	F.A.I. RTE.	SECTION	COUNTY	TOTAL SHEETS	SHEET NO.
c:\pwork\pwork\monallysr\d0299185\036617-sht-cover.dgn	PLOT SCALE = 50.0000' / in.	DRAWN -	REVISED -			57	(38-3,41-2)	ILLINOIS	5	5
PLOT DATE = 3/13/2012	DATE -	CHECKED -	REVISED -			CONTRACT NO. 66C17				
						FED. ROAD DIST. NO. - [ILLINOIS] FED. AID PROJECT				