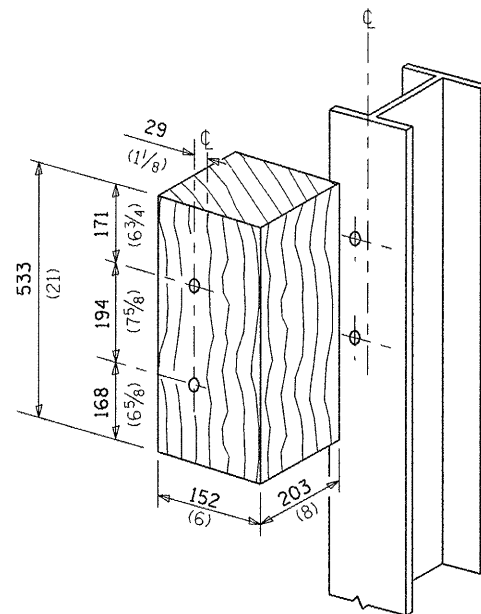


SECTION C-C

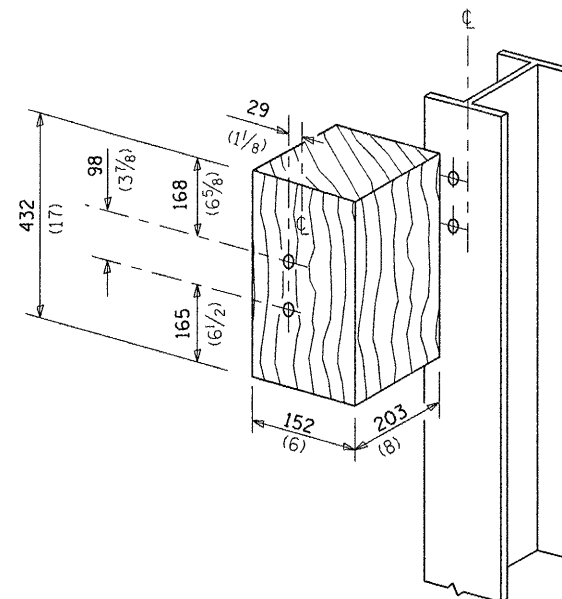
Bolts (A307) with washers and self locking nut or nut and jam nut. Top bolt 22 (7/8) by 229 (9). Bottom bolt 22 (7/8) by 127 (5) for curb mount or 22 (7/8) by 179 (7) for side mount.

\* Bolt 22x127 (7/8x5)  
\*\* Bolts 22x31 (7/8x2)

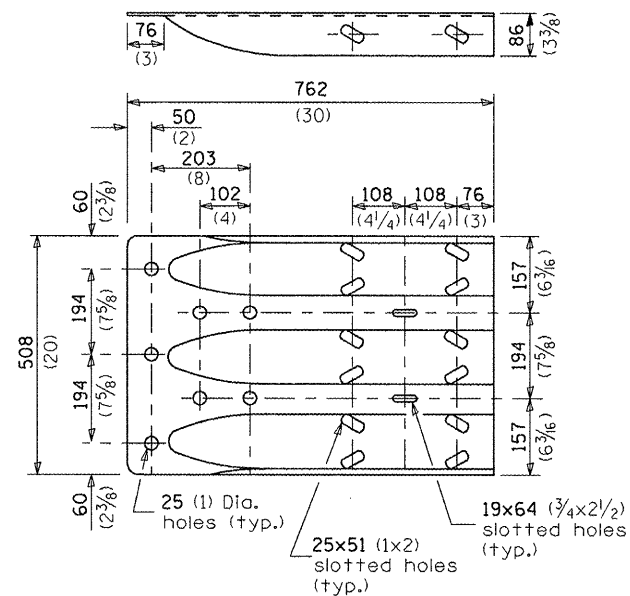
Note:  
Side mounted rail similar as to connection details.



POSTS 1-11 WOOD BLOCKOUT DETAIL



POST 12 WOOD BLOCKOUT DETAIL



MODIFIED THRIE BEAM END SHOE DETAIL

FILE NAME =	USER NAME = quigleyml	DESIGNED -	REVISED -
ca:\pwork\pwork\quigleyml\d0300564\030618-sht-detail.dgn		DRAWN -	REVISED -
PLOT SCALE = 100.0000 ' / in.		CHECKED -	REVISED -
PLOT DATE = 3/26/2012		DATE -	REVISED -

STATE OF ILLINOIS  
DEPARTMENT OF TRANSPORTATION

PRE-MGS EFFECTIVE 4-1-06  
TRAFFIC BARRIER TERMINAL, TYPE 6A  
STANDARD 631032-02

SCALE: SHEET NO. OF SHEETS STA. TO STA. Sheet 2 of 3

• D-3 HIGHWAY DAMAGE REPAIR 2013				
F.A. RTE.	SECTION	COUNTY	TOTAL SHEETS	SHEET NO.
VAR.	*	VAR.	37	31
FED. ROAD DIST. NO. ILLINOIS FED. AID PROJECT			CONTRACT NO. 66C18	