

1. COVER SHEET
2. GENERAL NOTES
3. SUMMARY OF QUANTITIES
4. TYPICAL SECTIONS
5. SCHEDULES - CLASS A PATCHING
6. SCHEDULES - PAVEMENT MARKING
7. TRAFFIC CONTROL AND PROTECTION, STANDARD 701400 (SPECIAL)
8. CLASS A PATCH, TYPE II 10" (SPECIAL)
9. CLASS A PATCH, TYPE II 15" (SPECIAL)

STANDARDS

- | | |
|-----------|--|
| 000001-06 | STANDARD SYMBOLS, ABBREVIATIONS AND PATTERNS |
| 001001-02 | AREAS OF REINFORCEMENT BARS |
| 001006 | DECIMAL OF AN INCH AND OF A FOOT |
| 420001-07 | PAVEMENT JOINTS |
| 420101-04 | 24' (7.2 m) JOINTED PCC PAVEMENT |
| 420111-03 | PCC PAVEMENT ROUNDOUTS |
| 442001-04 | CLASS A PATCHES |
| 701101-02 | OFF-ROAD OPERATIONS MULTILANE, 15' (4.5 m) TO 24" (600 mm) FROM PAVEMENT EDGE |
| 701106-02 | OFF-ROAD OPERATIONS, MULTILANE, MORE THAN 15' (4.5 m) AWAY |
| 701401-06 | LANE CLOSURE, FREEWAY/EXPRESSWAY |
| 701411-07 | LANE CLOSURE, MULTILANE, AT ENTRANCE OR EXIT RAMP FOR SPEEDS \geq 45 MPH |
| 701426-04 | LANE CLOSURE, MULTILANE INTERMITTENT OR MOVING OPERATION, FOR SPEEDS \geq 45 MPH |
| 701901-02 | TRAFFIC CONTROL DEVICES |

MICROFILMED _____
 REEL NUMBER _____
 AWARDED _____
 RESIDENT ENGINEER _____
 AS BUILT CHANGES WERE MADE
 ON THE FOLLOWING SHEETS _____

J.U.L.I.E.
 JOINT UTILITY LOCATION INFORMATION FOR EXCAVATION
 1-800-892-0123

DISTRICT 3 NO. (815) 434-6131

PROJECT ENGINEER: JOE KANNEL, P.E.
 UNIT CHIEF: RON WOODSHANK
 TOWNSHIP: VARIOUS

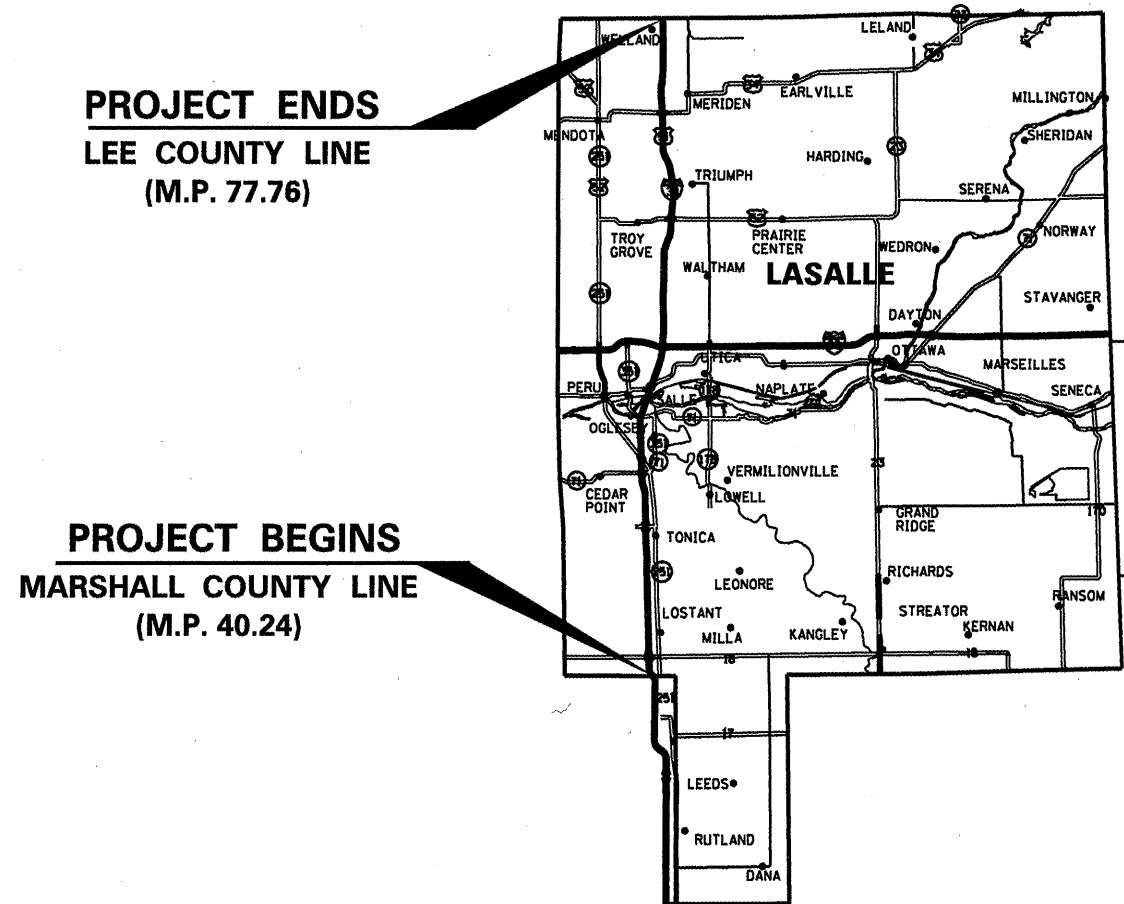
CONTRACT NO. 66C25

STATE OF ILLINOIS
 DEPARTMENT OF TRANSPORTATION
 DIVISION OF HIGHWAYS

**PROPOSED
 HIGHWAY PLANS**

FAI ROUTE 39 (I-39)
 SECTION D3 PAVEMENT PATCHING 2013-1

LASALLE COUNTY
 CRC PAVEMENT PATCHING
 C-93-117-12



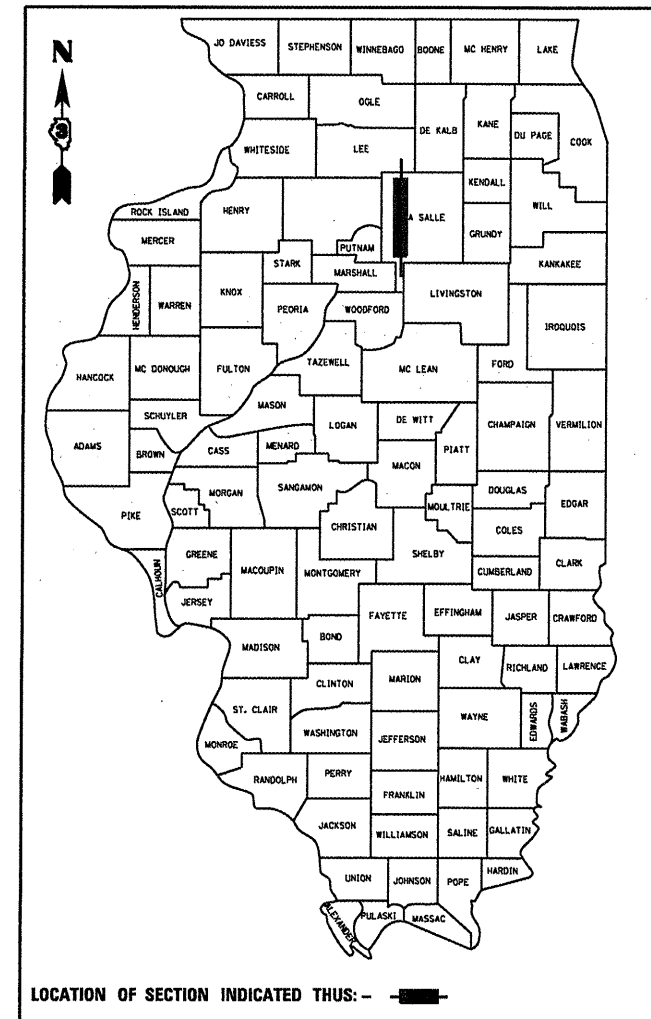
LOCATION MAP

NOT TO SCALE
 GROSS LENGTH = 198105 FT. = 37.52 MI.
 NET LENGTH = 4446 FT. = 0.84 MI

F.A.I. RTE.	SECTION	COUNTY	TOTAL SHEETS	SHEET NO.
39	*	LASALLE	10	1
		ILLINOIS	CONTRACT NO. 66C25	

*D3 PAVEMENT PATCHING 2013-1

D-93-002-11



LOCATION OF SECTION INDICATED THIS: - [thick black line]

FUNCTIONAL CLASSIFICATION
 RURAL - INTERSTATE
 F.A.I. ROUTE 39 (I-39)
 2011 ADT = 18200
 P.V. = 60.89% M.U. = 26.92% S.U. = 12.19%

STATE OF ILLINOIS
 DEPARTMENT OF TRANSPORTATION
 DIVISION OF HIGHWAYS

SUBMITTED 4/6 20 12
Eric S. Theilacker
 DEPUTY DIRECTOR OF HIGHWAYS, REGION ENGINEER

May 11 20 12
John D. Boranzelli, P.E.
 acting ENGINEER OF DESIGN AND ENVIRONMENT

May 11 20 12
William R. Frey
 acting DIRECTOR OF HIGHWAYS, CHIEF ENGINEER

PRINTED BY THE AUTHORITY
 OF THE STATE OF ILLINOIS

GENERAL NOTES

PLAN DIMENSIONS AND DETAILS RELATIVE TO EXISTING ROADWAY OR STRUCTURE HAVE BEEN TAKEN FROM EXISTING PLANS AND ARE SUBJECT TO NOMINAL CONSTRUCTION VARIATIONS. IT SHALL BE THE CONTRACTOR'S RESPONSIBILITY TO VERIFY SUCH DIMENSIONS AND DETAILS IN THE FIELD AND TO MAKE NECESSARY APPROVED ADJUSTMENTS PRIOR TO CONSTRUCTION OR ORDERING OF MATERIALS. SUCH VARIATIONS SHALL NOT BE CAUSE FOR ADDITIONAL COMPENSATION FOR A CHANGE IN THE SCOPE OF THE WORK, HOWEVER, THE CONTRACTOR WILL BE PAID FOR THE QUANTITY ACTUALLY FURNISHED AT THE UNIT BID FOR THE WORK.

FOR STABILIZATION, ALL TYPE III BARRICADES SHALL REQUIRE A MINIMUM OF FOUR SAND BAGS PER BARRICADE.

ABANDONED UNDERGROUND UTILITIES THAT CONFLICT WITH CONSTRUCTION SHALL BE DISPOSED OF OUTSIDE THE LIMITS OF THE RIGHT OF WAY ACCORDING TO ARTICLE 202.03 OF THE STANDARD SPECIFICATIONS AND AS DIRECTED BY THE ENGINEER. THIS WORK WILL NOT BE PAID FOR SEPARATELY BUT SHALL BE INCLUDED IN THE COST OF CLASS A PATCHING.

ANY REFERENCE TO A STANDARD IN THESE PLANS SHALL BE INTERPRETED TO MEAN THE EDITION AS INDICATED BY THE SUBNUMBER LISTED ON THE INDEX OF SHEETS OR THE COPY OF THE STANDARD INCLUDED IN THESE PLANS.

EXISTING REINFORCEMENT BARS EXTENDING INTO REMOVAL AREA SHALL BE CLEANED, STRAIGHTENED AND INCORPORATED INTO THE NEW CONSTRUCTION. ANY REINFORCEMENT BARS THAT ARE DAMAGED DURING CONCRETE REMOVAL SHALL BE REPLACED WITH AN APPROVED BAR SPLICER OR ANCHORAGE SYSTEM. COST INCLUDED WITH CONCRETE REMOVAL.

THE CONTRACTOR SHALL CONTACT JULIE AT LEAST 48 HOURS PRIOR TO EXCAVATION TO DETERMINE WHICH UTILITIES ARE IN THE AREA.

DATE: 4-6-12

PREPARED BY: *Don Brown*
DISTRICT STUDIES & PLANS ENGINEER

EXAMINED BY: *Herbert K. Hoge*
DISTRICT CONSTRUCTION ENGINEER

Ray J. Halling
DISTRICT MATERIALS ENGINEER

James A. Quaker
DISTRICT OPERATIONS ENGINEER

FILE NAME =	USER NAME = carpentardj	DESIGNED - RON WOODSHANK	REVISED -
ca\pwwork\pwwork\carpentardj\0302024\	0366C25-sht-details.dgn	DRAWN - RON WOODSHANK	REVISED -
	PLOT SCALE = 98.5294' / in.	CHECKED -	REVISED -

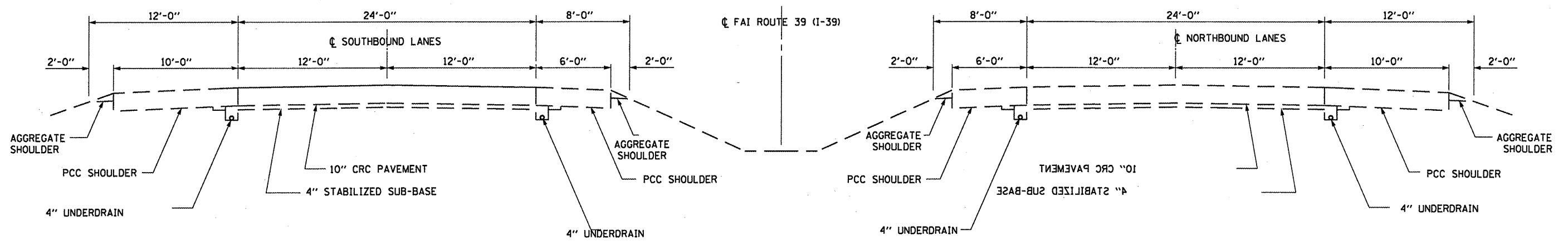
STATE OF ILLINOIS
DEPARTMENT OF TRANSPORTATION

GENERAL NOTES

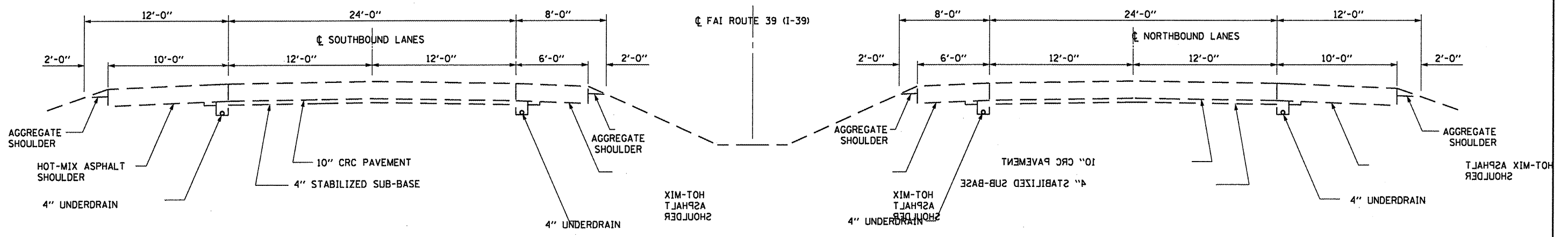
F.A.I. RTE.	SECTION	COUNTY	TOTAL SHEETS	SH N
39	*	LASALLE	10	4
*D3 PAVEMENT PATCHING 2013-1			CONTRACT NO. 66C2	

CODE NO.	ITEM	UNIT	TOTAL QUANTITY	CONSTR. CODE
				STATE FUNDS 100% STATE ROADWAY 0005 RURAL
44200559	CLASS A PATCHES, TYPE IV, 10 INCH	SQ YD	1042	1042
44213000	PATCHING REINFORCEMENT	SQ YD	1128	1128
44213200	SAW CUTS	FOOT	3004	3004
44213204	TIE BARS 3/4"	EACH	411	411
67100100	MOBILIZATION	L SUM	1	1
70100420	TRAFFIC CONTROL AND PROTECTION, STANDARD 701411	EACH	16	16
70103815	TRAFFIC CONTROL SURVEILLANCE	CAL DA	20	20
* 78009004	MODIFIED URETHANE PAVEMENT MARKING - LINE 4"	FOOT	838	838
* 78009006	MODIFIED URETHANE PAVEMENT MARKING - LINE 6"	FOOT	179	179
X4420559	CLASS A PATCHES, TYPE IV, 10 INCH (SPECIAL)	SQ YD	54	54
X4420630	CLASS A PATCHES, TYPE II, 15 INCH (SPECIAL)	SQ YD	22	22
X7010805	TRAFFIC CONTROL AND PROTECTION, STANDARD 701401 (SPECIAL)	L SUM	1	1

* SPECIALITY ITEMS



TYPICAL SECTIONS
M.P. 41.24 TO M.P. 55.36



TYPICAL SECTIONS
M.P. 55.36 TO M.P. 77.76

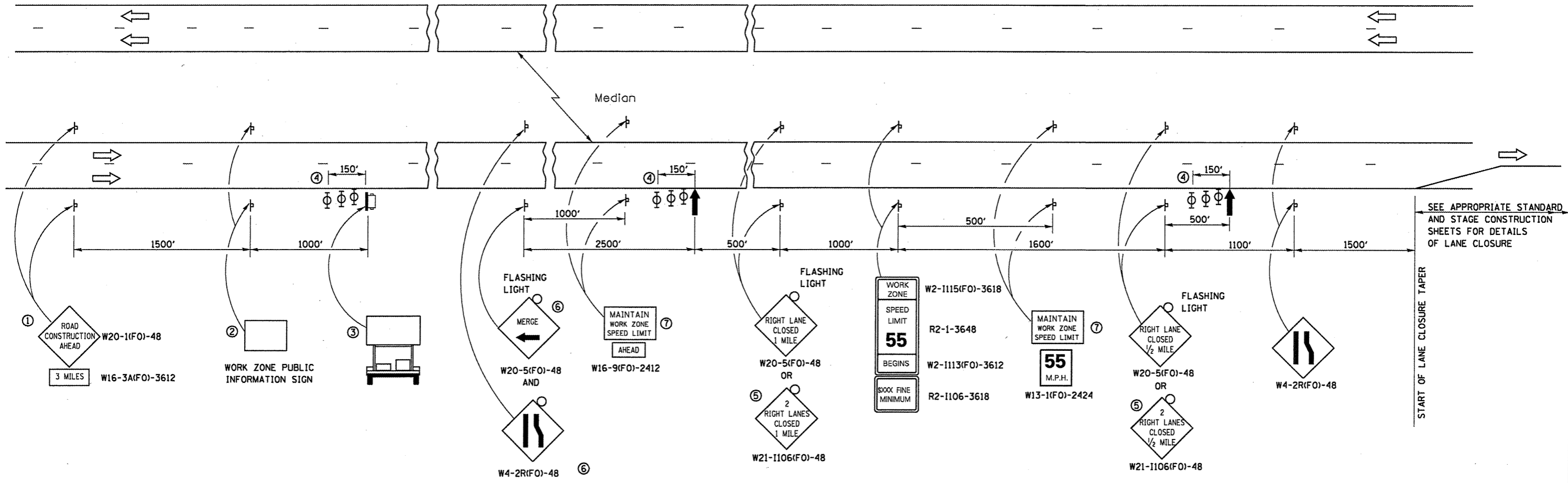
FILE NAME =	USER NAME = carpentardj	DESIGNED - RON WOODSHANK	REVISED -	STATE OF ILLINOIS DEPARTMENT OF TRANSPORTATION	TYPICAL SECTIONS	F.A.I. RTE. 39	SECTION *	COUNTY LASALLE	TOTAL SHEETS 10	SHEET NO. 4	
c:\pwork\pwork\dot\carpentardj\d0302024	D366C25-sht-details.dgn	DRAWN - RON WOODSHANK	REVISED -			SCALE:	SHEET NO. OF SHEETS	STA. TO STA.	#D3 PAVEMENT PATCHING 2013-1 CONTRACT NO. 66C25		
	PLOT SCALE = 1/8" = 1' / in.	CHECKED -	REVISED -						ILLINOIS		
	PLOT DATE = 4/5/2012	DATE -	REVISED -								

CLASS A PATCHING SCHEDULE - NORTHBOUND LANE													
LOCATION MILE POST	PASSING LANE						DRIVE LANE						REMARKS
	CLASS A PATCHING			PATCH REIN.	SAW CUTS	TIE BARS	CLASS A PATCHING			PATCH REIN.	SAW CUTS	TIE BARS	
	TYPE IV 10"	TYPE II 10" (SPECIAL)	TYPE II 15" (SPECIAL)				TYPE IV 10"	TYPE II 10" (SPECIAL)	TYPE II 15" (SPECIAL)				
SQ YD	SQ YD	SQ YD	SQ YD	FOOT	EACH	SQ YD	SQ YD	SQ YD	SQ YD	FOOT	EACH		
40.24													MARSHALL COUNTY LINE
46.90							133			133	348	50	
57.89							200			200	348	75	
62.99							27			27	88	10	
67.10							27			27	88	10	
70.78							27			27	88	10	
75.99							67			67	148	25	
77.76													
TOTALS							480			480	1108	180	

CLASS A PATCHING SCHEDULE - NORTHBOUND LANE														
LOCATION MILE POST	PASSING LANE						DRIVE LANE						REMARKS	
	CLASS A PATCHING			PATCH REIN.	SAW CUTS	TIE BARS	CLASS A PATCHING			PATCH REIN.	SAW CUTS	TIE BARS		
	TYPE IV 10"	TYPE II 10" (SPECIAL)	TYPE II 15" (SPECIAL)				TYPE IV 10"	TYPE II 10" (SPECIAL)	TYPE II 15" (SPECIAL)					
SQ YD	SQ YD	SQ YD	SQ YD	FOOT	EACH	SQ YD	SQ YD	SQ YD	SQ YD	FOOT	EACH			
77.76													LEE COUNTY LINE	
76.00							27			27	88	10		
73.90							53			53	128	20		
73.30							27			27	88	10		
71.20							27			27	88	10		
68.13		27		27	88	10		27		27	88	10		
67.10			11	21	72				11	11	64	0		
67.10							53			53	128	20		
63.70							29			29	92	11		
54.40							133			133	348	50		
48.20	133			133	348	50	27			27	108	10		
45.98							53			53	168	20		
40.24														MARSHALL COUNTY LINE
TOTALS	133	27	11	181	508	60	429	27	11	467	1388	171		

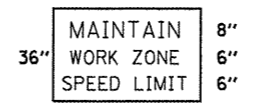
PAVEMENT MARKING SCHEDULE - NBL			
LOCATION MILE POST	MODIFIED URETHANE PAVEMENT MARKING LINE 4"		MODIFIED URETHANE PAVEMENT MARKING LINE 6"
	FEET		FEET
	YELLOW	WHITE	WHITE
46.90		100	25
57.89		150	38
62.99		20	5
67.10		20	5
70.78		20	5
75.99		50	13
SUBTOTAL		360	
TOTAL		360	91

PAVEMENT MARKING SCHEDULE - SBL			
LOCATION MILE POST	MODIFIED URETHANE PAVEMENT MARKING LINE 4"		MODIFIED URETHANE PAVEMENT MARKING LINE 6"
	FEET		FEET
	YELLOW	WHITE	WHITE
76.00		20	5
73.90		40	10
73.30		20	5
71.20		20	5
68.13	20	20	5
67.10	8	8	2
67.10		40	10
63.70		22	6
54.40		100	25
48.20	100	20	5
45.98		40	10
SUBTOTAL	128	350	
TOTAL		478	88



- ① THE ROAD CONSTRUCTION AHEAD SIGN SHALL BE LOCATED 3 MILES IN ADVANCE OF THE PROJECT LIMITS.
- ② THE MESSAGE AND SIZE OF THE WORK ZONE PUBLIC INFORMATION SIGN SHALL BE AS SPECIFIED BY THE DEPARTMENT.
- ③ TO BE PLACED IN THE MEDIAN WHEN FEASIBLE. THE MESSAGE BOARD SHALL BE USED TO DISPLAY STATUS OF LANES WITHIN THE PROJECT. THE PRIMARY MESSAGES SHALL BE:
"RIGHT LANE CLOSED" / " x MILES AHEAD"
"LEFT LANE CLOSED" / " x MILES AHEAD"
"ALL LANES OPEN"
- ④ THREE, TYPE II BARRICADES, DRUMS, OR VERTICAL BARRICADES AT 50' CENTERS.
- ⑤ THIS SIGN SHALL BE USED WHEN 2 LANES ARE CLOSED.
- ⑥ WHEN THE LEFT LANE IS CLOSED, SWITCH THESE TWO SIGNS AND THE DIRECTION OF THE MERGE ARROW.

⑦ 48"x36" FLUORESCENT ORANGE SIGN WITH BLACK LETTERS.
48"



- ↑ ARROW BOARD
- ☐ PORTABLE CHANGEABLE MESSAGE SIGN
- ⊥ SIGN
- ⊕ TYPE II BARRICADE, DRUM, OR VERTICAL BARRICADE WITH MONODIRECTIONAL FLASHING LIGHT

GENERAL NOTE:

THIS STANDARD IS USED WHERE AT ANY TIME A LANE IS CLOSED ON A FREEWAY/EXPRESSWAY.

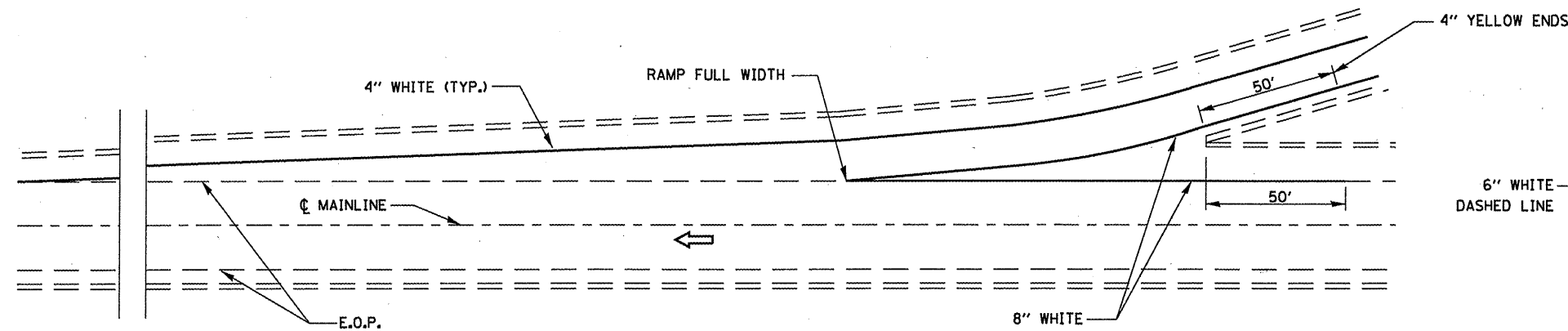
WHEN THE LEFT LANE IS CLOSED, LEFT LANE CLOSED SIGNS SHALL BE SUBSTITUTED FOR THE RIGHT LANE CLOSED SIGNS.

THE FIRST TWO SIGNS AND THE MESSAGE BOARD ARE STATIONARY. THE OTHER SIGNS AND ARROWBOARDS SHALL BE MOVED AS NECESSARY TO MAINTAIN THE REQUIRED DISTANCE FROM THE START OF THE LANE CLOSURE TAPER(S).

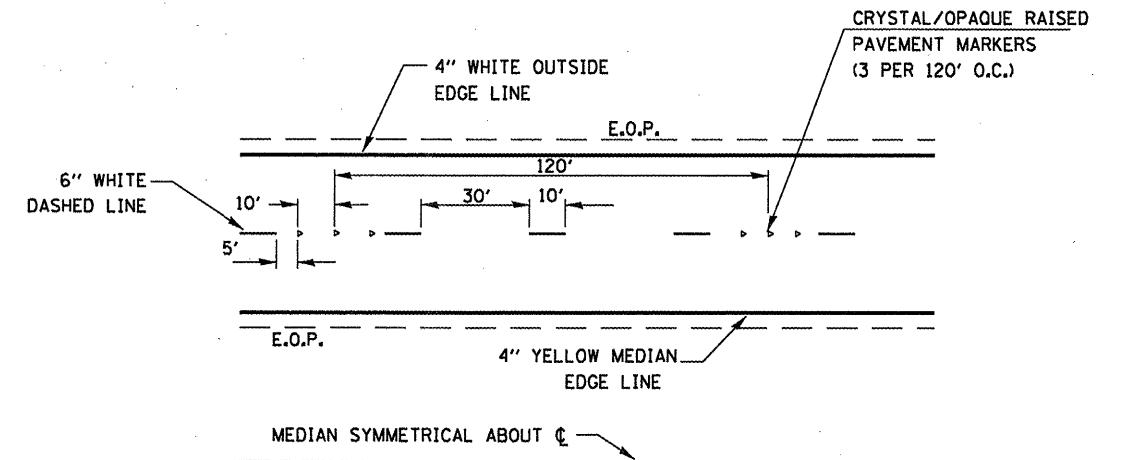
SEE SPECIAL PROVISIONS.

ALL DIMENSIONS ARE IN INCHES UNLESS OTHERWISE SHOWN.

FILE NAME =	USER NAME = carpentardj	DESIGNED - RON WOODSHANK	REVISED -	STATE OF ILLINOIS DEPARTMENT OF TRANSPORTATION	TRAFFIC CONTROL AND PROTECTION STANDARD 701400 (SPECIAL) DETAILS	F.A.I. RTE.:	SECTION	COUNTY	TOTAL SHEETS	SHEET NO.	
ci\pwwork\pwwork\carpentardj\d0302024	0366C25-sht-details.dgn	DRAWN - RON WOODSHANK	REVISED -			39	*	LASALLE	10	7	
PLOT SCALE = 100.0000' / in.	CHECKED -	REVISED -	REVISED -			*03 PAVEMENT PATCHING 2013-1 ILLINOIS					
PLOT DATE = 4/5/2012	DATE -	REVISED -	REVISED -			CONTRACT NO. 66C25					



TYPICAL PAVEMENT MARKING FOR ENTRANCE RAMP TERMINALS

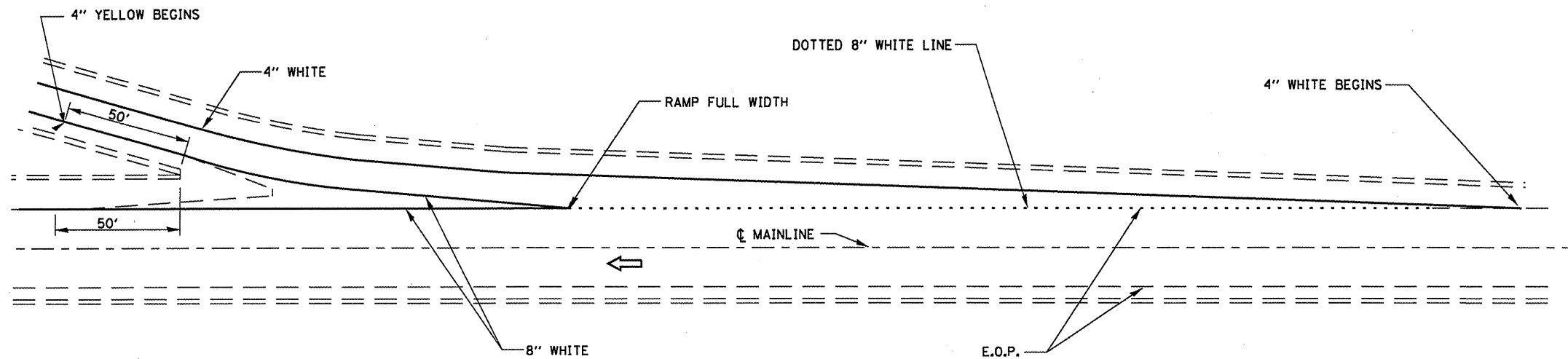


TYPICAL PAVEMENT MARKINGS

NOTE:

WHEN PATCHING IS ADJACENT TO 8" PAVEMENT MARKING LINE THE 8" STRIP SHALL BE REPLACED WITH TWO 4" LINES.

RAISED REFLECTIVE PAVEMENT MARKERS THAT FALL WITHIN PATCHED BOUNDARIES WILL NOT BE REPLACED.



TYPICAL PAVEMENT MARKINGS FOR EXIT RAMP TERMINALS

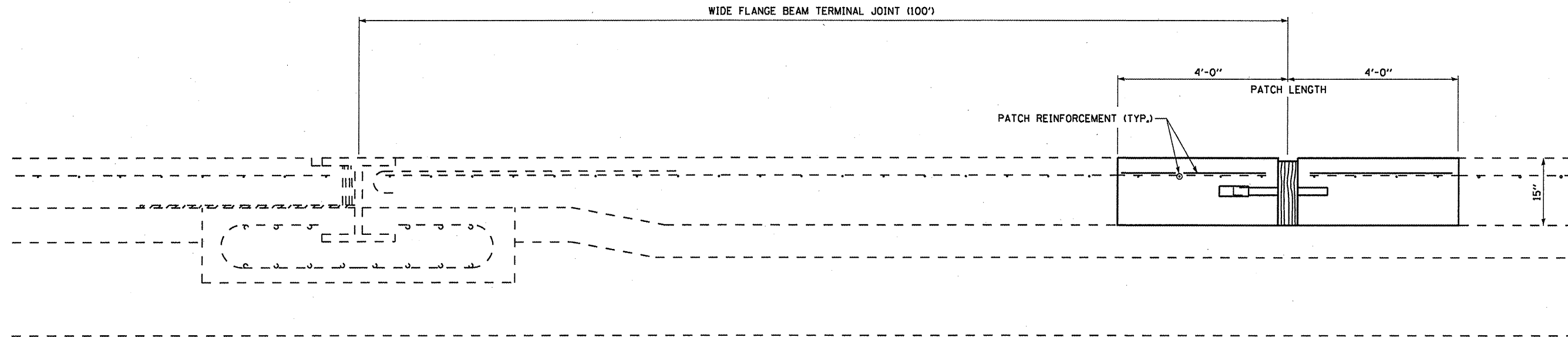
FILE NAME =	USER NAME = carpentardj	DESIGNED - RON WOODSHANK	REVISED -
c:\pwork\p1dot\carpentardj\d8382824	0366C25-sht-details.dgn	DRAWN - RON WOODSHANK	REVISED -
	PLOT SCALE = 100.0000' / 1"	CHECKED -	REVISED -
	PLOT DATE = 4/5/2012	DATE -	REVISED -

STATE OF ILLINOIS
DEPARTMENT OF TRANSPORTATION

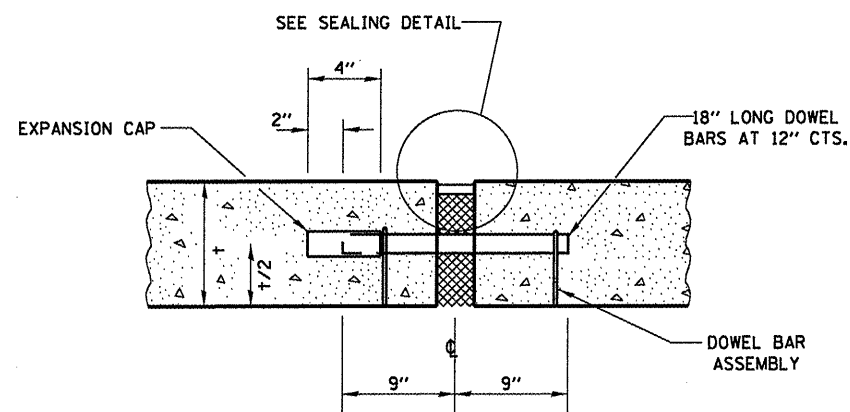
PAVEMENT MARKING

SCALE: SHEET NO. 1 OF 1 SHEETS STA. TO STA.

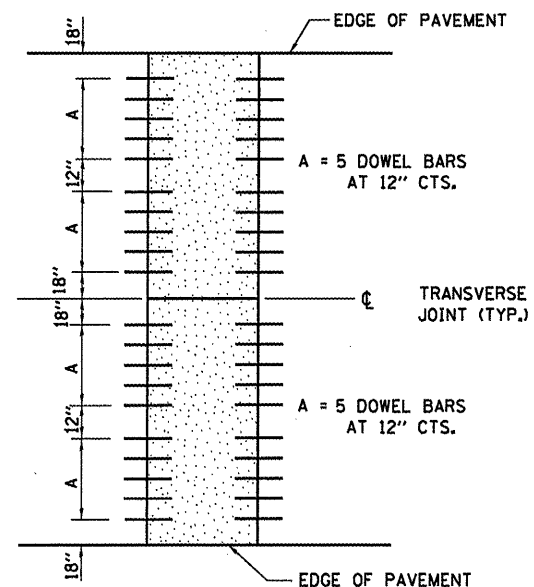
F.A.I. RTE.	SECTION	COUNTY	TOTAL SHEETS	SHEET NO.
39	*	LASALLE	10	8
*D3 PAVEMENT PATCHING 2013-1			CONTRACT NO. 66C25	
ILLINOIS				



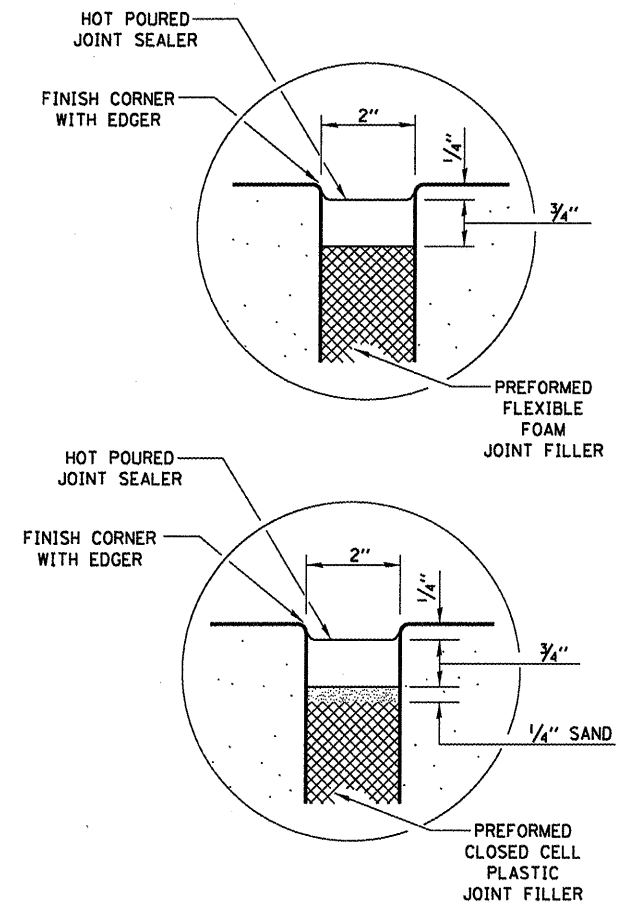
CLASS A PATCH, TYPE II 15" (SPECIAL)



TRANSVERSE EXPANSION JOINT



PLAN



SEALING DETAIL

FILE NAME =	USER NAME = coarpentrdj	DESIGNED - RON WOODSHANK	REVISED -
ai\pv\work\pvidot\coarpentrdj\03022024\0366C25-sht-details.dgn		DRAWN - RON WOODSHANK	REVISED -
PLOT SCALE = 100.0000' / 1"		CHECKED -	REVISED -
PLOT DATE = 4/5/2012		DATE -	REVISED -

**STATE OF ILLINOIS
DEPARTMENT OF TRANSPORTATION**

CLASS A PATCH, TYPE II 15" (SPECIAL)

SCALE: SHEET NO. OF SHEETS STA. TO STA.

F.A.I. RTE. 39	SECTION *	COUNTY LASALLE	TOTAL SHEETS 10	SHEET NO. 10
*03 PAVEMENT PATCHING 2013-1			CONTRACT NO. 66C25	
ILLINOIS				