

F.A.P. RTE.	SECTION	COUNTY	TOTAL SHEETS	SHEET NO.
786	(97-15D, BR-1)	LIVINGSTON	8	1
		ILLINOIS	CONTRACT NO. 66C26	

STATE OF ILLINOIS
DEPARTMENT OF TRANSPORTATION
DIVISION OF HIGHWAYS
**PROPOSED
HIGHWAY PLANS**

INDEX OF SHEETS

- 1 COVER SHEET
- 2 GENERAL NOTES
- 3 SUMMARY OF QUANTITIES
- 4 TYPICAL SECTION
- 5 TRAFFIC CONTROL STAGING DETAILS AND WIDTH RESTRICTION SIGNING
- 6 EXISTING GENERAL PLAN AND ELEVATION FOR STRUCTURE NO. 053-0163
- 7 BRIDGE APPROACH SLAB DETAILS FOR STRUCTURE NO. 053-0163
- 8 BAR SPLICER ASSEMBLY AND MECHANICAL SPLICER DETAILS FOR STRUCTURE NO. 053-0163

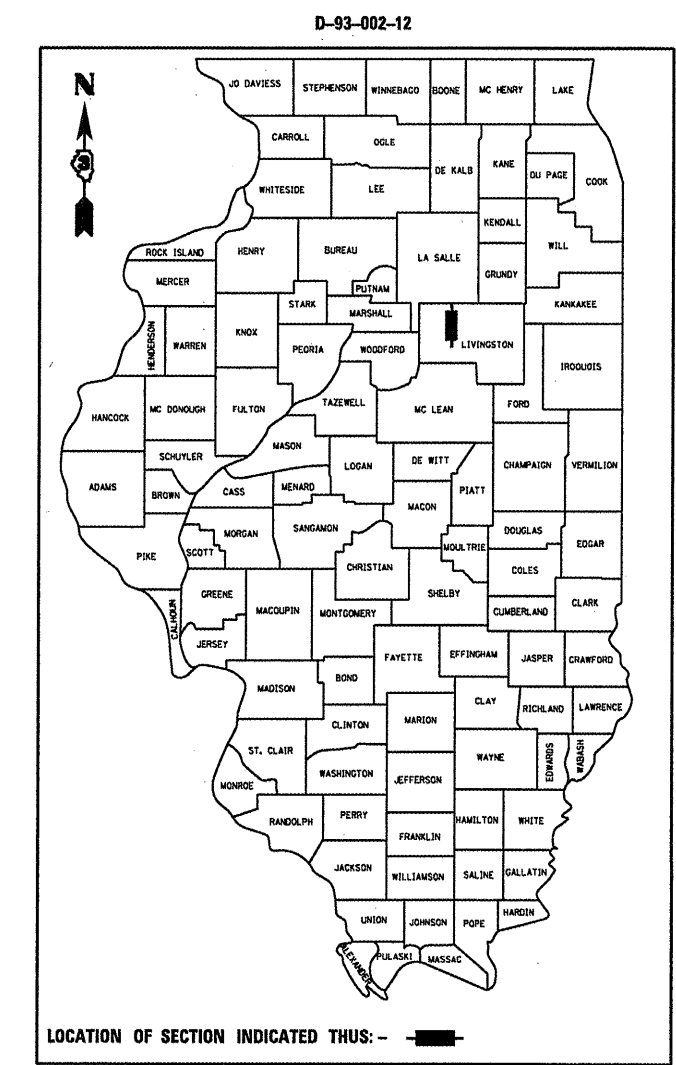
STANDARDS

- 000001-06 STANDARD SYMBOLS, ABBREVIATIONS AND PATTERNS
- 001001-02 AREAS OF REINFORCEMENT BARS
- 001006 DECIMAL OF AN INCH AND OF A FOOT
- 420001-07 PAVEMENT JOINTS
- 420401-08 BRIDGE APPROACH SLAB PAVEMENT CONNECTOR
- 609006-05 BRIDGE APPROACH PAVEMENT DRAIN DETAIL
- 701001-02 OFF-RD OPERATIONS, 2L, 2W, MORE THAN 15', (4.5 m) AWAY
- 701006-03 OFF-RD OPERATIONS, 2L, 2W, 15' (4.5 m) TO 24" (600 mm) FROM PAVEMENT EDGE
- 701201-04 LANE CLOSURE, 2L, 2W, DAY ONLY, FOR SPEEDS ≥ 45 MPH
- 701206-03 LANE CLOSURE, 2L, 2W, NIGHT ONLY, FOR SPEEDS ≥ 45 MPH
- 701321-12 LANE CLOSURE, 2L, 2W, BRIDGE REPAIR WITH BARRIER
- 701901-02 TRAFFIC CONTROL DEVICES
- 704001-07 TEMPORARY CONCRETE BARRIER

F.A.P. ROUTE 786 (IL 170)
SECTION (97-15D, BR-1)

**BRIDGE APPROACH SLAB REPLACEMENT
LIVINGSTON COUNTY
STRUCTURE NO. 053-0163 CARRYING F.A.P. 786 (IL 170)
OVER BRANCH OF MUD CREEK 3.1 MILES NORTH OF IL 23**

C-93-118-12



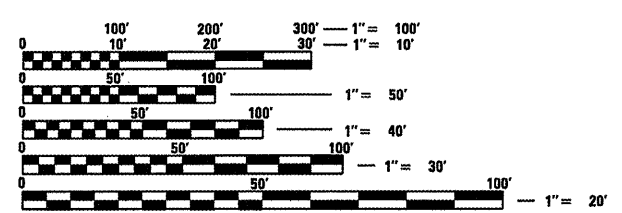
FUNCTIONAL CLASSIFICATION
MINOR ARTERIAL
2011 ADT = 1150
P.V. = 86.95% M.U. = 6.09% S.U. = 6.96%

STATE OF ILLINOIS
DEPARTMENT OF TRANSPORTATION
DIVISION OF HIGHWAYS

SUBMITTED 4/6 20 12
Eric S. Thorburn
DEPUTY DIRECTOR OF HIGHWAYS, REGION ENGINEER

May 11 20 12
John D. Baranzelli, P.E.
acting ENGINEER OF DESIGN AND ENVIRONMENT

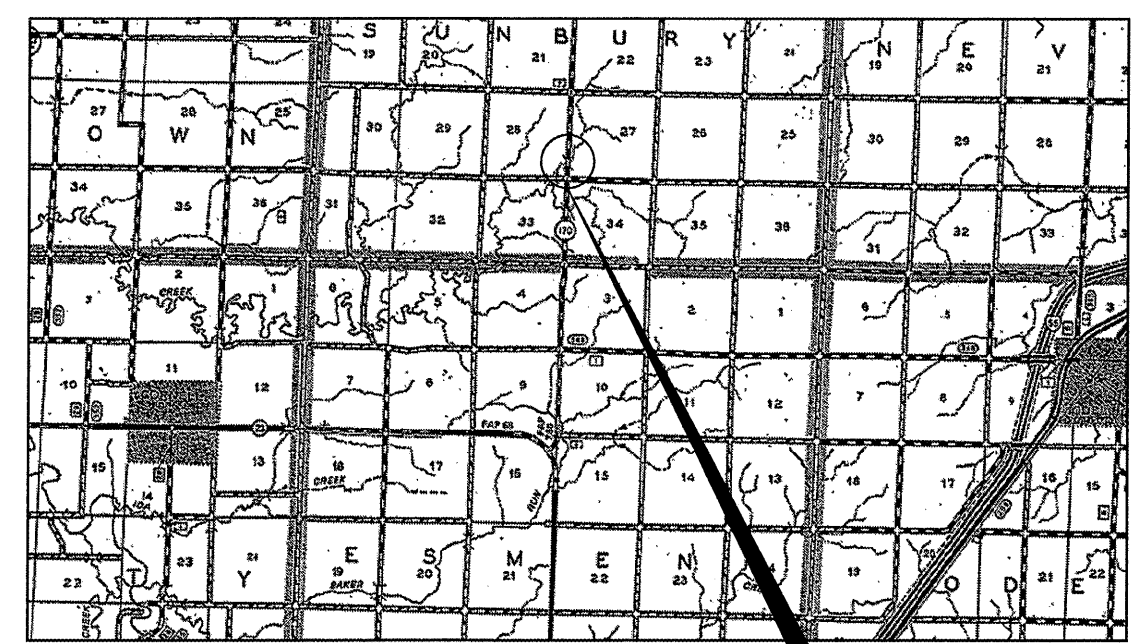
May 11 20 12
William R. Freiler
acting DIRECTOR OF HIGHWAYS, CHIEF ENGINEER



FULL SIZE PLANS HAVE BEEN PREPARED USING STANDARD ENGINEERING SCALES. REDUCED SIZED PLANS WILL NOT CONFORM TO STANDARD SCALES. IN MAKING MEASUREMENTS ON REDUCED PLANS, THE ABOVE SCALES MAY BE USED.

J.U.L.I.E.
JOINT UTILITY LOCATION INFORMATION FOR EXCAVATION
1-800-892-0123
OR 811

DISTRICT 3 NO. (815) 434-6131
PROJECT ENGINEER: JOE KANNEL, P.E.
UNIT CHIEF: RON WOODSHANK
TOWNSHIP: SUNBURY
CONTRACT NO. 66C26



GROSS LENGTH = 49 FT. = .009 MILE
NET LENGTH = 49 FT. = .009 MILE

PROJECT LOCATION
SN. 053-0163

LOCATION MAP
NOT TO SCALE

**PRINTED BY THE AUTHORITY
OF THE STATE OF ILLINOIS**