

INDEX OF SHEETS

- 1 COVER SHEET
- 2 GENERAL NOTES
- 3 SUMMARY OF QUANTITIES
- 4 TYPICAL SECTION
- 5 TRAFFIC CONTROL STAGING DETAILS AND WIDTH RESTRICTION SIGNING
- 6 EXISTING GENERAL PLAN AND ELEVATION FOR STRUCTURE NO. 053-0163
- 7 BRIDGE APPROACH SLAB DETAILS FOR STRUCTURE NO. 053-0163
- 8 BAR SPLICER ASSEMBLY AND MECHANICAL SPLICER DETAILS FOR STRUCTURE NO. 053-0163

STANDARDS

- 000001-06 STANDARD SYMBOLS, ABBREVIATIONS AND PATTERNS
- 001001-02 AREAS OF REINFORCEMENT BARS
- 001006 DECIMAL OF AN INCH AND OF A FOOT
- 420001-07 PAVEMENT JOINTS
- 420401-08 BRIDGE APPROACH SLAB PAVEMENT CONNECTOR
- 609006-05 BRIDGE APPROACH PAVEMENT DRAIN DETAIL
- 701001-02 OFF-RD OPERATIONS, 2L, 2W, MORE THAN 15', (4.5 m) AWAY
- 701006-03 OFF-RD OPERATIONS, 2L, 2W, 15' (4.5 m) TO 24" (600 mm) FROM PAVEMENT EDGE
- 701201-04 LANE CLOSURE, 2L, 2W, DAY ONLY, FOR SPEEDS ≥ 45 MPH
- 701206-03 LANE CLOSURE, 2L, 2W, NIGHT ONLY, FOR SPEEDS ≥ 45 MPH
- 701321-12 LANE CLOSURE, 2L, 2W, BRIDGE REPAIR WITH BARRIER
- 701901-02 TRAFFIC CONTROL DEVICES
- 704001-07 TEMPORARY CONCRETE BARRIER

STATE OF ILLINOIS
DEPARTMENT OF TRANSPORTATION
DIVISION OF HIGHWAYS
PROPOSED
HIGHWAY PLANS

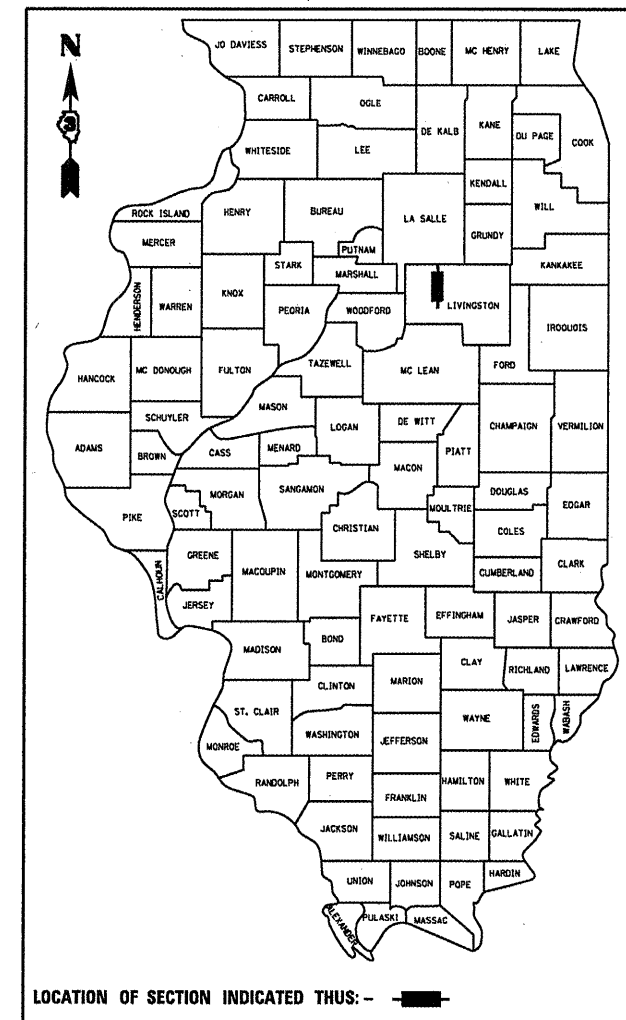
F.A.P. ROUTE 786 (IL 170)
SECTION (97-15D, BR-1)

BRIDGE APPROACH SLAB REPLACEMENT
LIVINGSTON COUNTY
STRUCTURE NO. 053-0163 CARRYING F.A.P. 786 (IL 170)
OVER BRANCH OF MUD CREEK 3.1 MILES NORTH OF IL 23

C-93-118-12

F.A.P. RTE.	SECTION	COUNTY	TOTAL SHEETS	SHEET NO.
786	(97-15D, BR-1)	LIVINGSTON	8	1
		ILLINOIS	CONTRACT NO. 66C26	

D-93-002-12

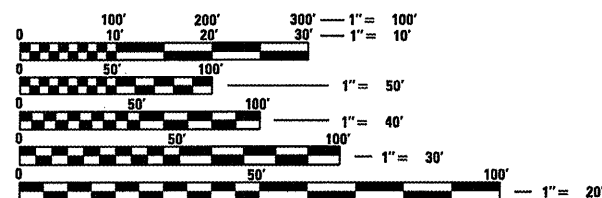


LOCATION OF SECTION INDICATED THUS: —■—

FUNCTIONAL CLASSIFICATION
MINOR ARTERIAL

2011 ADT = 1150

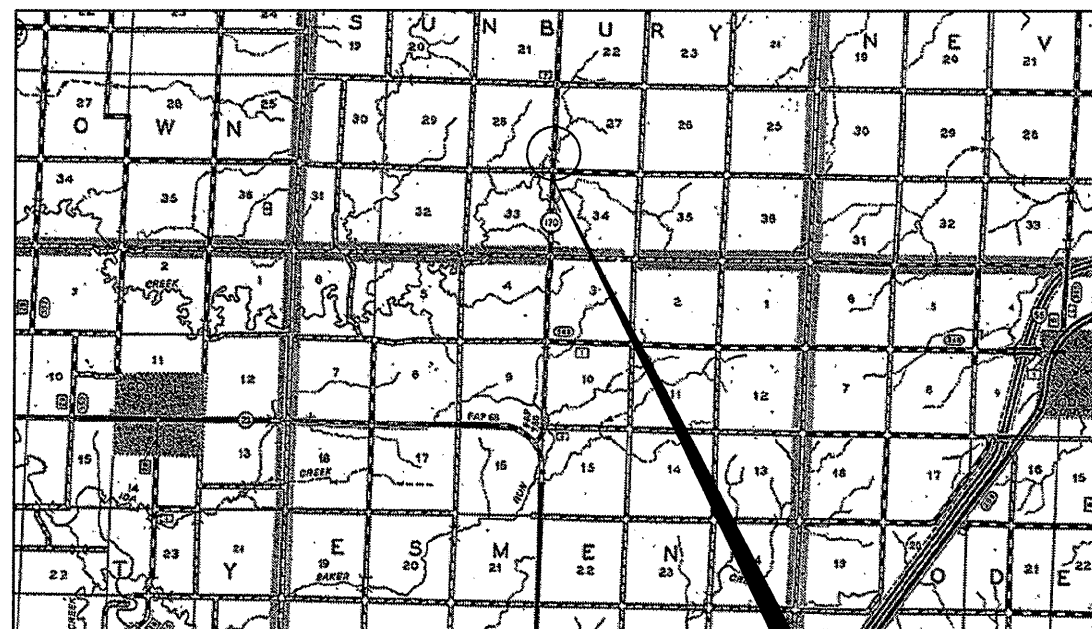
P.V. = 86.95% M.U. = 6.09% S.U. = 6.96%



FULL SIZE PLANS HAVE BEEN PREPARED USING STANDARD ENGINEERING SCALES. REDUCED SIZED PLANS WILL NOT CONFORM TO STANDARD SCALES. IN MAKING MEASUREMENTS ON REDUCED PLANS, THE ABOVE SCALES MAY BE USED.

J.U.L.I.E.
 JOINT UTILITY LOCATION INFORMATION FOR EXCAVATION
 1-800-892-0123
 OR 811

DISTRICT 3 NO. (815) 434-6131
 PROJECT ENGINEER: JOE KANNEL, P.E.
 UNIT CHIEF: RON WOODSHANK
 TOWNSHIP: SUNBURY
 CONTRACT NO. 66C26



GROSS LENGTH = 49 FT. = .009 MILE
 NET LENGTH = 49 FT. = .009 MILE

LOCATION MAP
 NOT TO SCALE

PROJECT LOCATION
 SN. 053-0163

STATE OF ILLINOIS
 DEPARTMENT OF TRANSPORTATION
 DIVISION OF HIGHWAYS

SUBMITTED 4/6 20 12
Eric S. Thorburn
 DEPUTY DIRECTOR OF HIGHWAYS, REGION ENGINEER

May 11 20 12
John D. Baranzelli, P.E.
 acting ENGINEER OF DESIGN AND ENVIRONMENT

May 11 20 12
William R. Freiler
 acting DIRECTOR OF HIGHWAYS, CHIEF ENGINEER

PRINTED BY THE AUTHORITY
OF THE STATE OF ILLINOIS

GENERAL NOTES

ANY REFERENCE TO A STANDARD IN THESE PLANS SHALL BE INTERPRETED TO MEAN THE EDITION AS INDICATED BY THE SUBNUMBER SHOWN IN THE LIST OF STANDARDS OR THE COPY INCLUDED IN THESE PLANS.

COMMITMENTS

MIXTURES TABLE

	HMA SURFACE (TOP 1-1/2")	HMA BINDER (VARIES)
PG GRADE	PG64-22	PG64-22
DESIGN AIR VOIDS	4.0% @ N50	4.0% @ N50
MIXTURE COMPOSITION	IL 9.5	IL 19.0
FICTION AGGREGATE	MIXTURE C	
DENSITY CONTROL METHOD	CORES	CORES

DATE: 4-6-12

PREPARED BY: Don Bouil
DISTRICT STUDIES & PLANS ENGINEER

EXAMINED BY: Hubert Klump
DISTRICT CONSTRUCTION ENGINEER

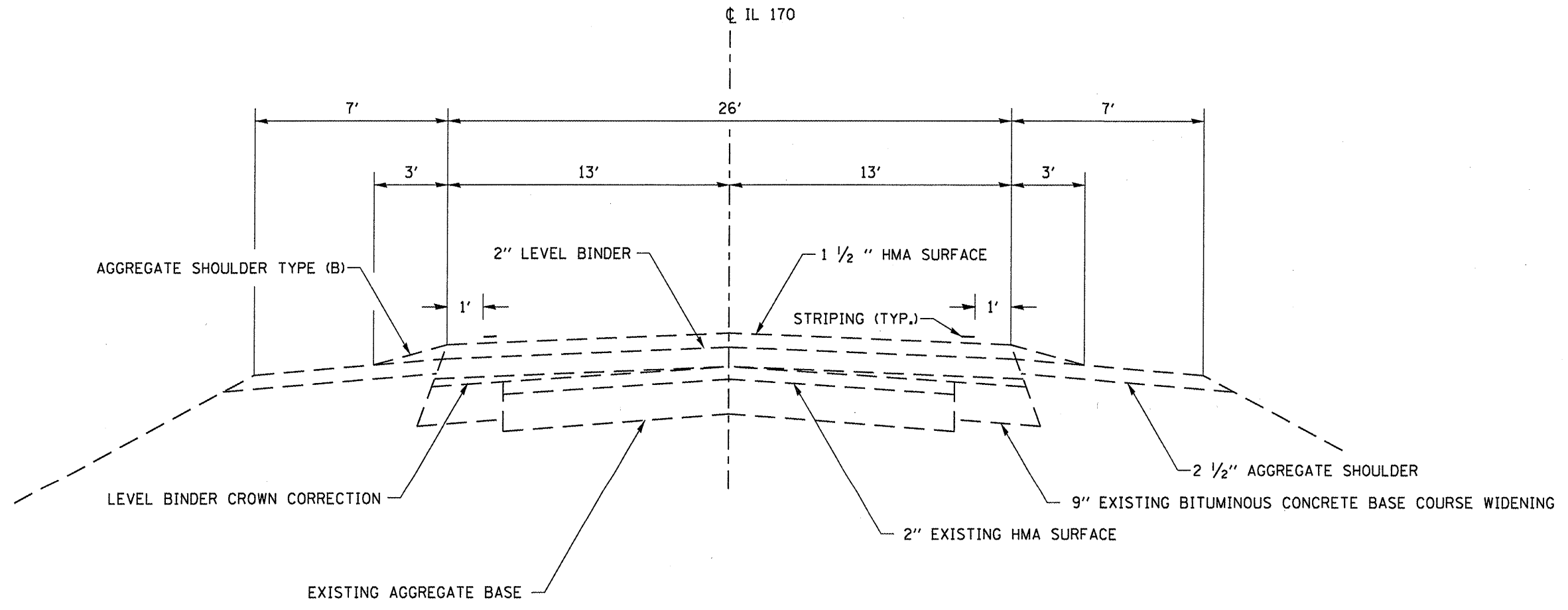
Ray J. Miller
DISTRICT MATERIALS ENGINEER

Bruce A. Husler
DISTRICT OPERATIONS ENGINEER

FILE NAME =	USER NAME = spurlockd	DESIGNED - DBS	REVISED -	STATE OF ILLINOIS DEPARTMENT OF TRANSPORTATION	GENERAL NOTES	F.A.P. RTE.	SECTION	COUNTY	TOTAL SHEETS	SHEET NO.
c:\pwwork\pwwork\spurlockd\0302674\036626-sht-details.dgn	DRAWN - DBS	REVISED -	786			(97-15D, BR11)	LIVINGSTON	8	2	
PLOT SCALE = 100.0000' / 1" =	CHECKED -	REVISED -	CONTRACT NO. 66C26							
PLOT DATE = 4/2/2012	DATE - MARCH 2012	REVISED -	ILLINOIS FED. AID PROJECT							
				SCALE:	SHEET NO. 1 OF 1 SHEETS	STA. 310+39.62 TO STA. 310+88.62				

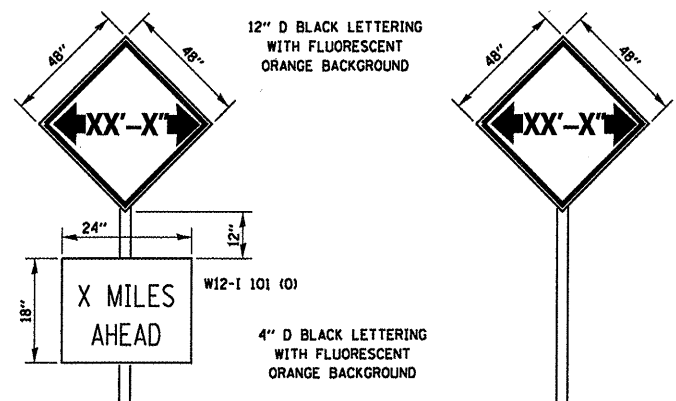
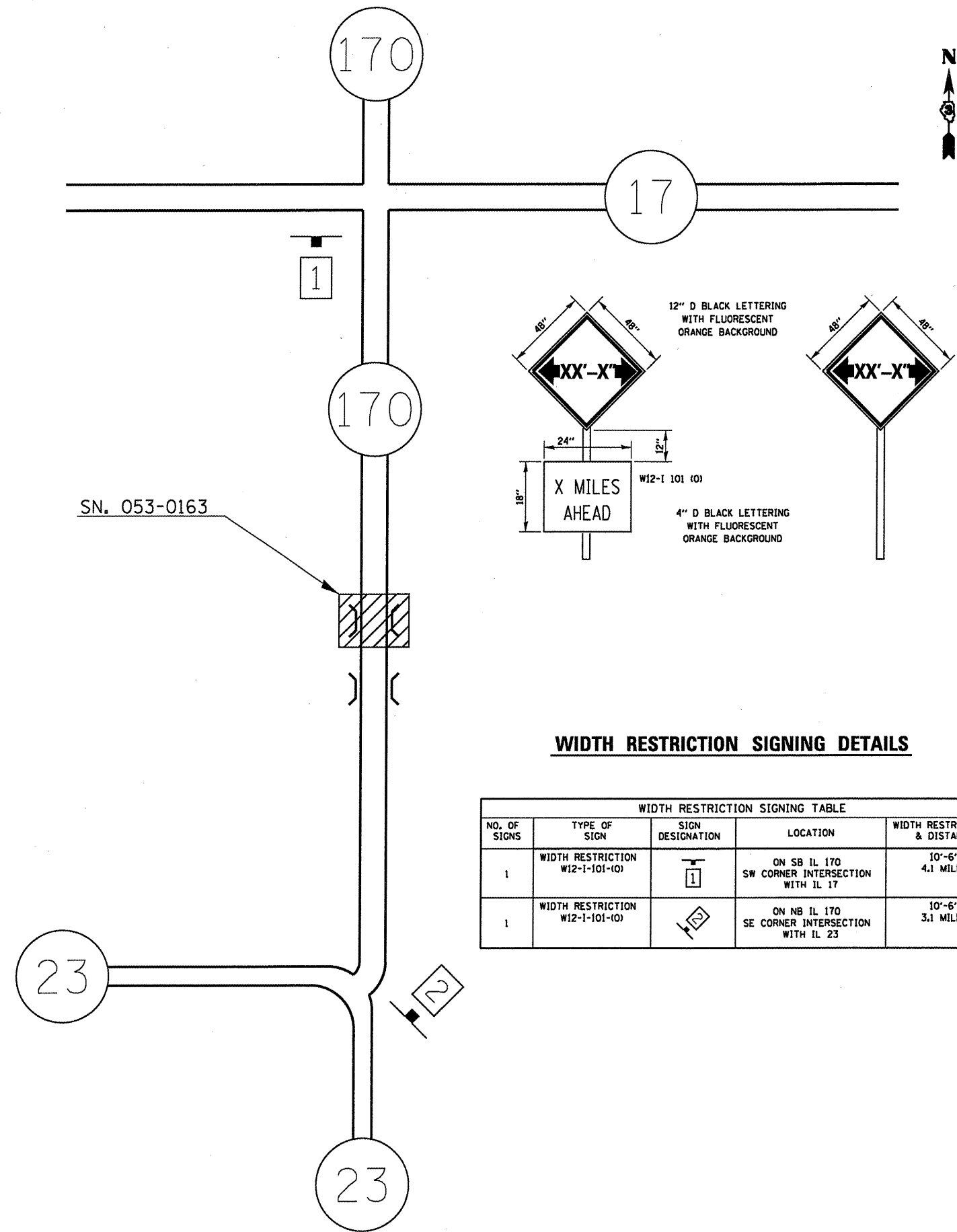
CODE NO.	ITEM	UNIT	TOTAL QUANTITY	CONSTR. CODE	
				STATE	100% STRUCTURE
				0014	RURAL
42001430	BRIDGE APPROACH PAVEMENT CONNECTOR (FLEXIBLE)	SQ YD	38	38	
44000100	PAVEMENT REMOVAL	SQ YD	75	75	
48101200	AGGREGATE SHOULDERS, TYPE B	TON	5	5	
50300225	CONCRETE STRUCTURES	CU YD	11.6	11.6	
50300255	CONCRETE SUPERSTRUCTURE	CU YD	55.1	55.1	
50800205	REINFORCEMENT BARS, EPOXY COATED	POUND	12927	12927	
50800515	BAR SPLICERS	EACH	105	105	
67100100	MOBILIZATION	L SUM	1	1	
70100405	TRAFFIC CONTROL AND PROTECTION, STANDARD 701321	EACH	1	1	
70100450	TRAFFIC CONTROL AND PROTECTION, STANDARD 701201	L SUM	1	1	
70100455	TRAFFIC CONTROL AND PROTECTION, STANDARD 701206	L SUM	1	1	
70106500	TEMPORARY BRIDGE TRAFFIC SIGNALS	EACH	1	1	
70106700	TEMPORARY RUMBLE STRIPS	EACH	6	6	
70400100	TEMPORARY CONCRETE BARRIER	FOOT	355	355	
70400200	RELOCATE TEMPORARY CONCRETE BARRIER	FOOT	355	355	
* 78001110	PAINT PAVEMENT MARKING - LINE 4"	FOOT	1394	1394	
* 78001130	PAINT PAVEMENT MARKING - LINE 6"	FOOT	174	174	
78300100	PAVEMENT MARKING REMOVAL	SQ FT	552	552	
X7200201	WIDTH RESTRICTION SIGNING	L SUM	1	1	
Z0004552	APPROACH SLAB REMOVAL	SQ YD	89	89	
Z0030250	IMPACT ATTENUATORS, TEMPORARY (NON- REDIRECTIVE), TEST LEVEL 3	EACH	2	2	
Z0030350	IMPACT ATTENUATORS, RELOCATE (NON- REDIRECTIVE), TEST LEVEL 3	EACH	2	2	

**specialty items*



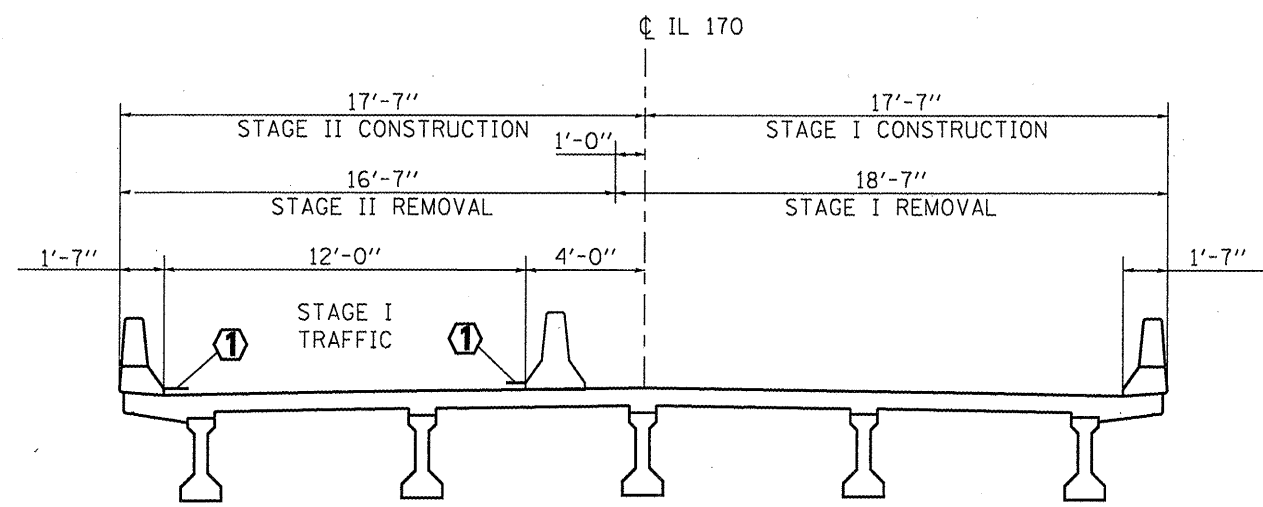
TYPICAL SECTION

FILE NAME =	USER NAME = spurlackd	DESIGNED - DBS	REVISED -	STATE OF ILLINOIS DEPARTMENT OF TRANSPORTATION	TYPICAL SECTION	F.A.P. RTE.	SECTION	COUNTY	TOTAL SHEETS	SHEET NO.
c:\pwwork\spurlackd\0302674\0302674-66C26-sht-details.dgn	DRAWN - DBS	REVISED -	786			(97-15D, BR-11)	LIVINGSTON	8	4	
PLOT SCALE = 1/8" = 1'-0"	CHECKED -	REVISED -	CONTRACT NO. 66C26							
PLOT DATE = 4/2/2012	DATE - MARCH 2012	REVISED -	ILLINOIS FED. AID PROJECT							
				SCALE: SHEET 1 OF 1 SHEETS STA. 310+39.62 TO STA. 310+88.62						



WIDTH RESTRICTION SIGNING DETAILS

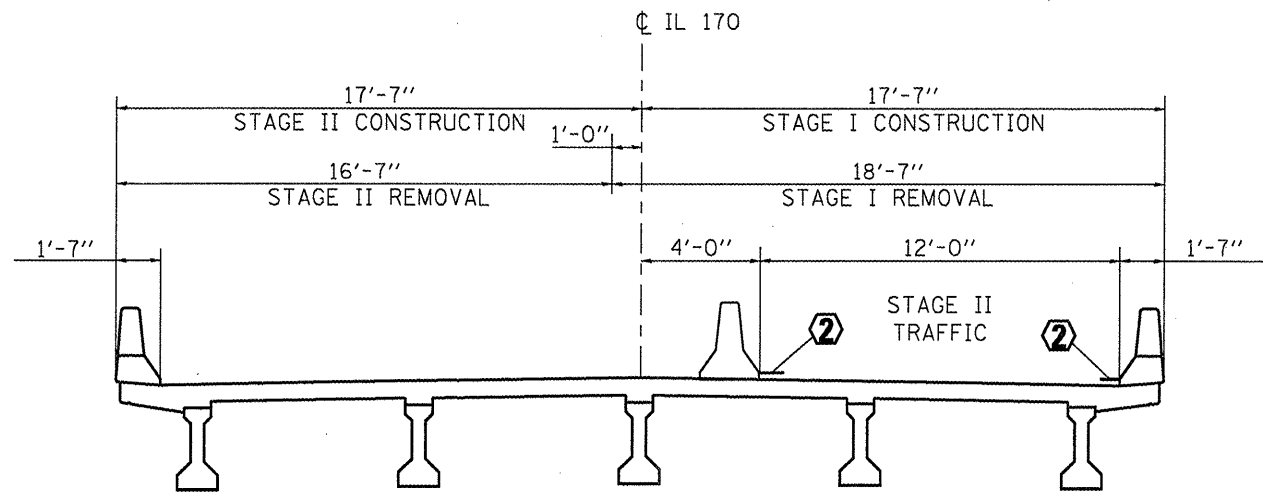
WIDTH RESTRICTION SIGNING TABLE				
NO. OF SIGNS	TYPE OF SIGN	SIGN DESIGNATION	LOCATION	WIDTH RESTRICTION & DISTANCE
1	WIDTH RESTRICTION W12-1-101-(0)		ON SB IL 170 SW CORNER INTERSECTION WITH IL 17	10'-6" 4.1 MILES
1	WIDTH RESTRICTION W12-1-101-(0)		ON NB IL 170 SE CORNER INTERSECTION WITH IL 23	10'-6" 3.1 MILES



STAGE I

① TEMPORARY PAVEMENT MARKING – STAGE I

② TEMPORARY PAVEMENT MARKING – STAGE II



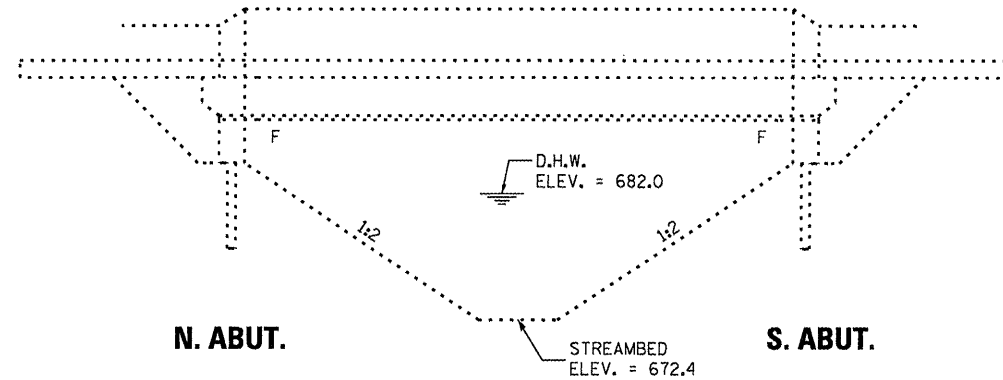
STAGE II

GENERAL NOTES

PLAN DIMENSIONS AND DETAILS RELATIVE TO EXISTING PLANS ARE SUBJECT TO NOMINAL CONSTRUCTION VARIATIONS. THE CONTRACTOR SHALL FIELD VERIFY EXISTING DIMENSIONS AND DETAILS AFFECTING NEW CONSTRUCTION AND MAKE NECESSARY APPROVED ADJUSTMENTS PRIOR TO CONSTRUCTION OR ORDERING OF MATERIALS. SUCH VARIATIONS SHALL NOT BE CAUSE FOR ADDITIONAL COMPENSATION FOR A CHANGE IN SCOPE OF WORK; HOWEVER, THE CONTRACTOR WILL BE PAID FOR THE QUANTITY ACTUALLY FURNISHED AT THE UNIT PRICE BID FOR THE WORK.

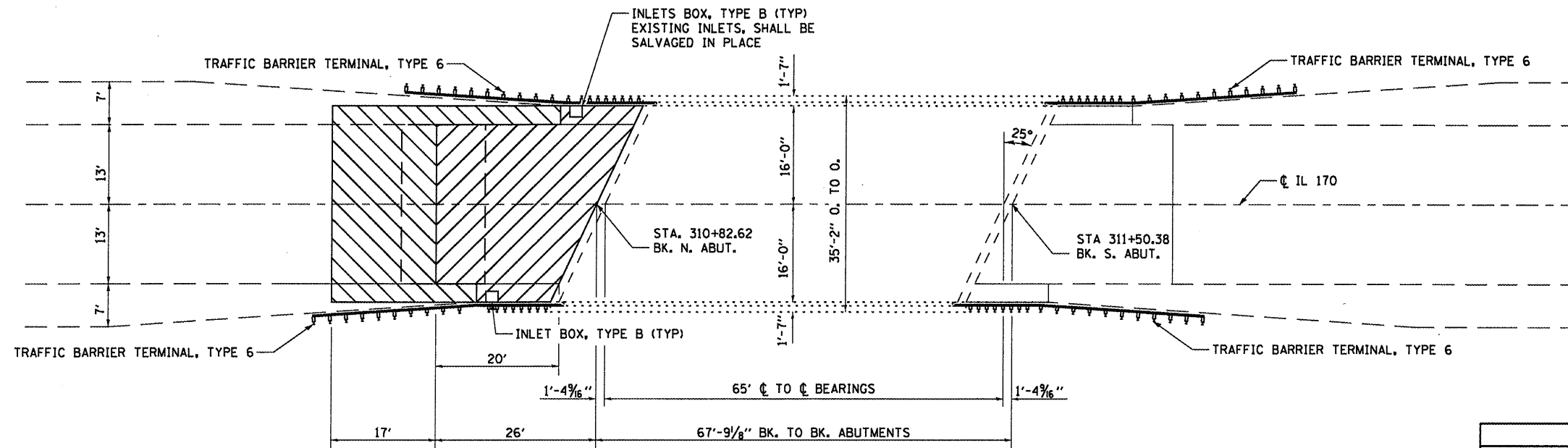
REINFORCEMENT BARS DESIGNATED (E) SHALL BE EPOXY COATED.

EXISTING REINFORCEMENT BARS EXTENDING INTO THE REMOVAL AREA SHALL BE CLEANED, STRAIGHTENED AND INCORPORATED INTO THE NEW CONSTRUCTION. ANY REINFORCEMENT BARS THAT ARE DAMAGED DURING CONCRETE REMOVAL SHALL BE REPLACED WITH AN APPROVED BAR SPLICER OR ANCHORAGE SYSTEM. COST INCLUDED WITH CONCRETE REMOVAL.



ELEVATION

- APPROACH SLAB REMOVAL**
- PAVEMENT REMOVAL (HMA)**



PLAN

TOTAL BILL OF MATERIALS FOR STRUCTURE NO. 053-0163

ITEM	UNIT	TOTAL
CONCRETE STRUCTURES	CU YD	11.6
CONCRETE SUPERSTRUCTURE	CU YD	55.1
REINFORCEMENT BARS EPOXY COATED	POUND	12927
BAR SPICERS	EACH	105
APPROACH SLAB REMOVAL	SQ YD	89

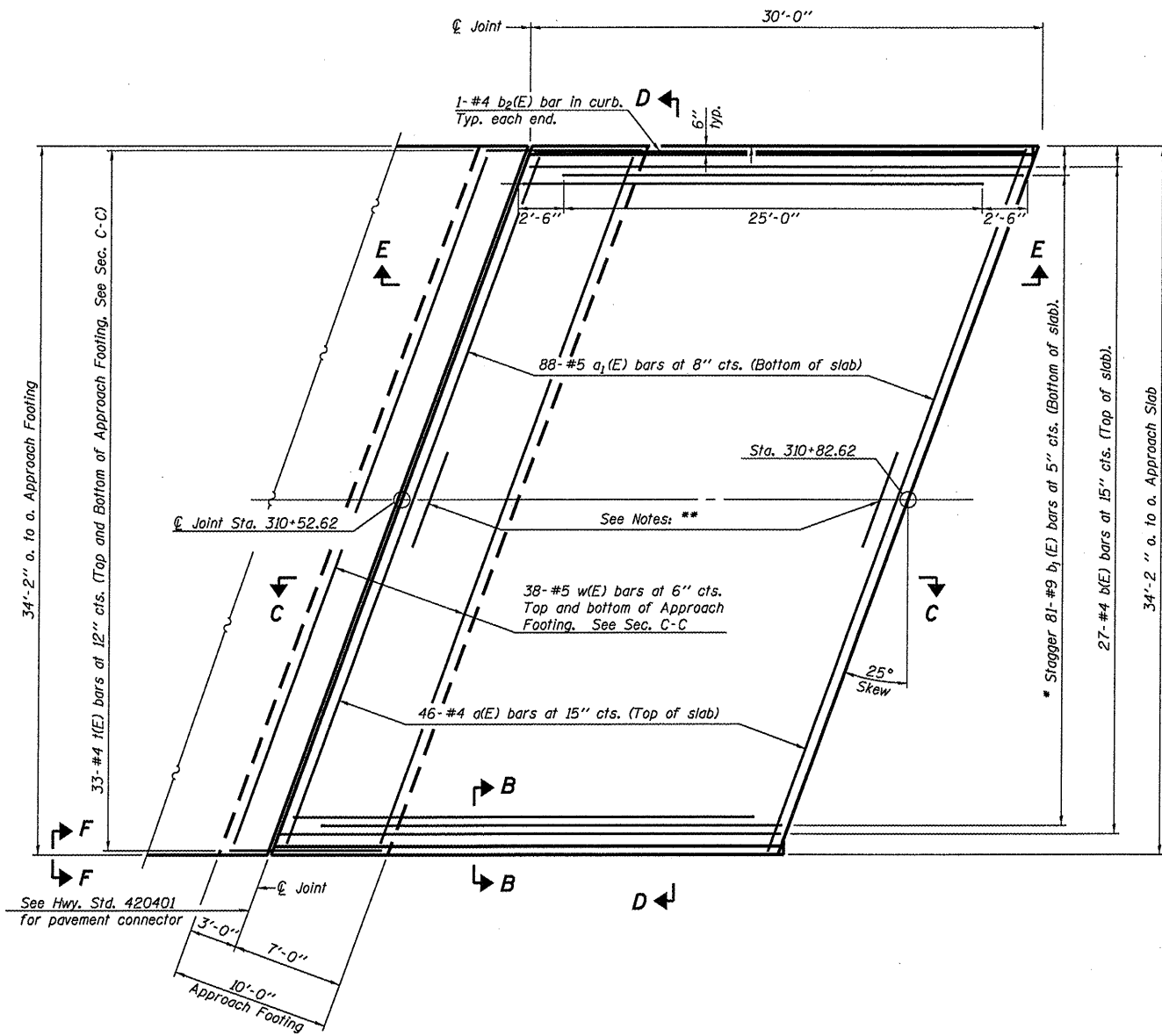
FILE NAME =	USER NAME = spurlookd	DESIGNED - DBS	REVISED -
66C26-sht-details.dgn		DRAWN - DBS	REVISED -
PLOT SCALE = 1/8" = 1'-0"		CHECKED -	REVISED -
PLOT DATE = 4/2/2012		DATE - MARCH 2012	REVISED -

STATE OF ILLINOIS
DEPARTMENT OF TRANSPORTATION

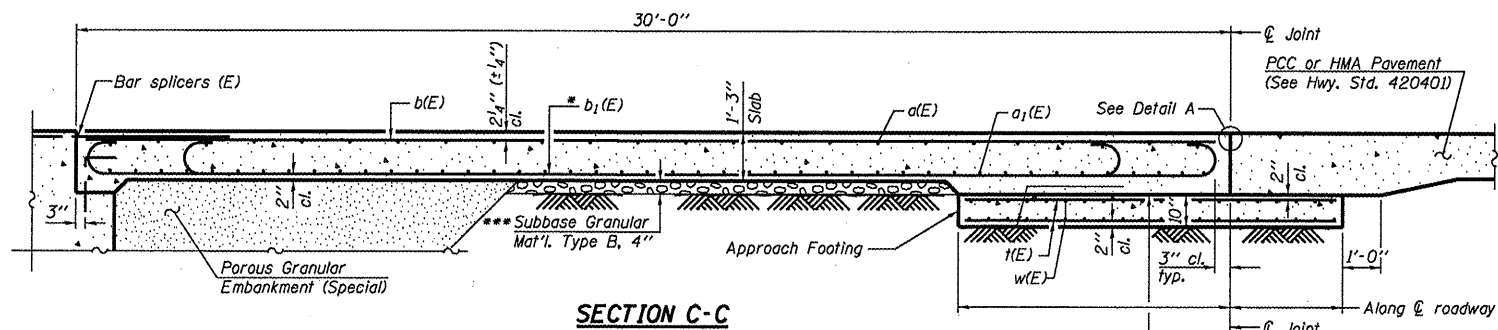
EXISTING GENERAL PLAN AND ELEVATION FOR STRUCTURE NO. 053-0163

SCALE: SHEET NO. 1 OF 3 SHEETS STA. 310+39.62 TO STA. 310+88.62

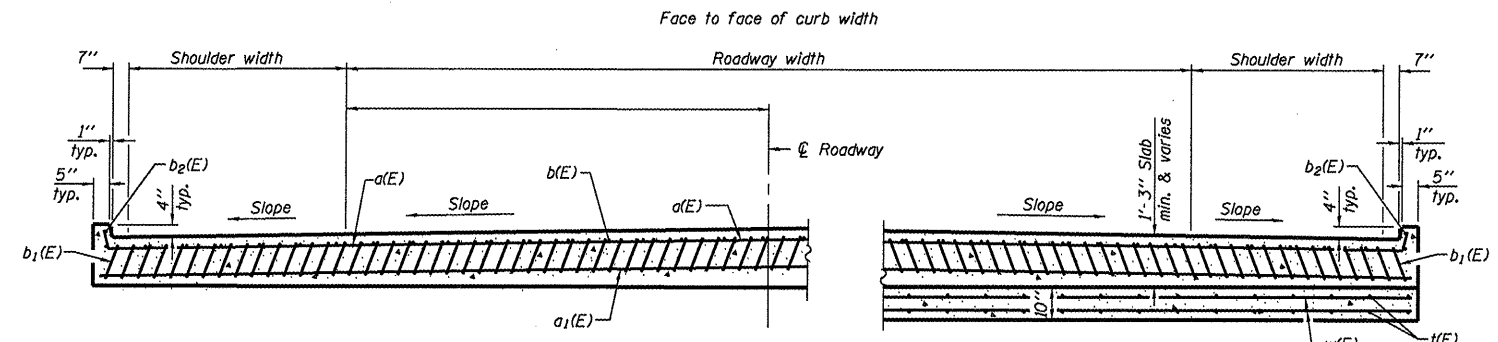
F.A.P. RTE.	SECTION	COUNTY	TOTAL SHEETS	SHEET NO.
786	(97-15D, BR-11)	LIVINGSTON	8	6
CONTRACT NO. 66C26			ILLINOIS FED. AID PROJECT	



PLAN



SECTION C-C

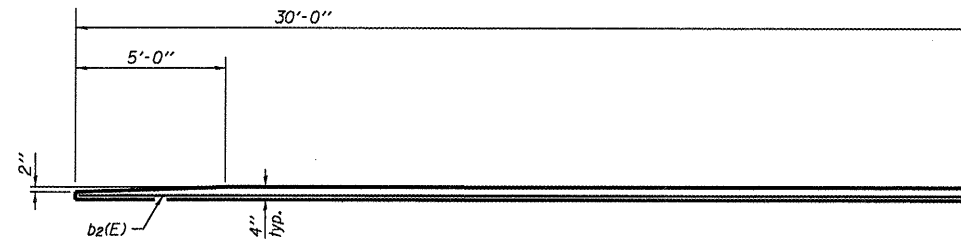


NEAR ABUTMENT

SECTION D-D

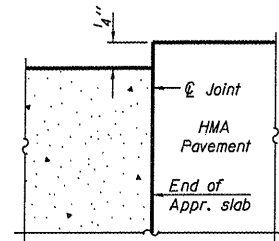
(See Plan for dimensions not shown)

AT APPROACH FOOTING



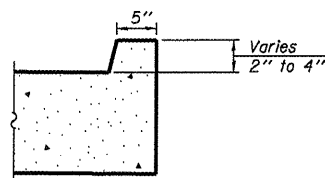
VIEW E-E

(Curb)

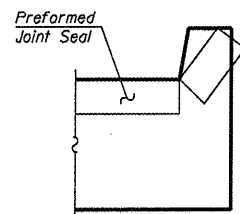


FLEXIBLE PAVEMENT

DETAIL A

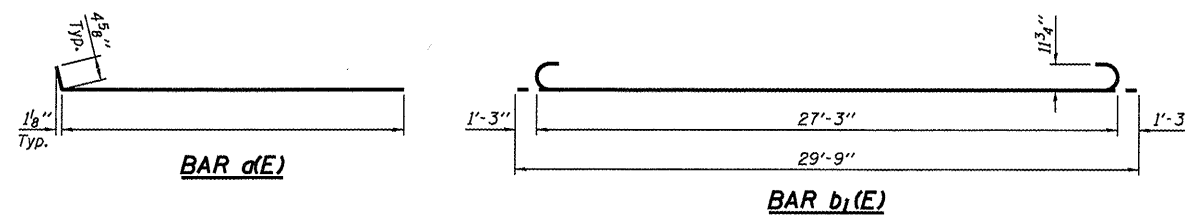


VIEW B-B



VIEW F-F

Angle Preformed Joint Seal at 45° at curbs when req'd for drainage.



BAR a(E)

BAR b1(E)

Notes:

Approach slab shall be paid for as Concrete Superstructure.
 Approach footing concrete shall be paid for as Concrete Structures.
 Reinforcement shall be paid for as Reinforcement Bars, Epoxy Coated.
 The approach footing maximum applied service bearing pressure (Q_{max}) = 2.0 ksf.
 For bar splicer details, see sheet 3 of 3.
 Cost of excavation for approach footing included with Concrete Structures.
 a(E), a1(E) and w(E) bar spacings measured along \bar{C} Rdwy.

* Tilt #9 b1(E) bars as required to maintain clearance.

** #5 Bar splicer for a1(E) bars bottom of slab

#4 Bar splicer for a(E) bars top of slab

#5 Bar splicer for w(E) bars top & bottom of approach slab footing

*** Cost included with Concrete Superstructure.

BILL OF MATERIAL

Bar	No.	Size	Length	Shape
a(E)	46	#4	18'-6"	—
a1(E)	88	#5	18'-6"	—
b(E)	27	#4	29'-8"	—
b1(E)	81	#9	29'-9"	—
b2(E)	2	#4	29'-8"	—
k(E)	66	#4	9'-8"	—
w(E)	76	#5	18'-6"	—
Concrete Superstructure	Cu. Yd.		55.1	
Concrete Structures	Cu. Yd.		11.6	
Reinforcement Bars, Epoxy Coated	Pound		12927	

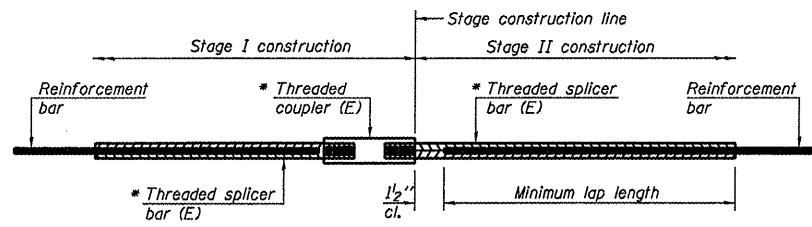
FILE NAME =	USER NAME = spurlookd	DESIGNED - DBS	REVISED -
ce:\pw\work\p\midot\spurlookd\0302674\036626-shd-details.dgn		DRAWN - DBS	REVISED -
PLOT SCALE = 100.0000 / 1 in.		CHECKED -	REVISED -
PLOT DATE = 4/2/2012		DATE - MARCH 2012	REVISED -

STATE OF ILLINOIS
DEPARTMENT OF TRANSPORTATION

BRIDGE APPROACH SLAB DETAILS
STRUCTURE NO. 053-163

SCALE: SHEET NO. 2 OF 3 SHEETS STA. 310+39.62 TO STA. 310+88.62

F.A.P. RTE.	SECTION	COUNTY	TOTAL SHEETS	SHEET NO.
786	(97-15D, BR-11)	LIVINGSTON	8	7
ILLINOIS FED. AID PROJECT			CONTRACT NO. 66C26	



STANDARD BAR SPLICER ASSEMBLY

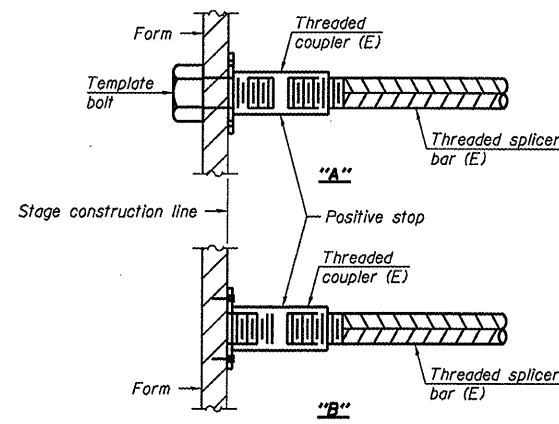
Bar size to be spliced	Minimum Lap Lengths				
	Table 1	Table 2	Table 3	Table 4	Table 5
3, 4	1'-5"	1'-11"	2'-1"	2'-4"	2'-3"
5	1'-9"	2'-5"	2'-7"	2'-11"	2'-10"
6	2'-1"	2'-11"	3'-1"	3'-6"	3'-4"
7	2'-9"	3'-10"	4'-2"	4'-8"	4'-6"
8	3'-8"	5'-1"	5'-5"	6'-2"	5'-10"
9	4'-7"	6'-5"	6'-10"	7'-9"	7'-5"

- Table 1: Black bar, 0.8 Class C
- Table 2: Black bar, Top bar lap, 0.8 Class C
- Table 3: Epoxy bar, 0.8 Class C
- Table 4: Epoxy bar, Top bar lap, 0.8 Class C
- Table 5: Epoxy bar, Top bar lap, Class B

Threaded splicer bar length = min. lap length + 1 1/2" + thread length

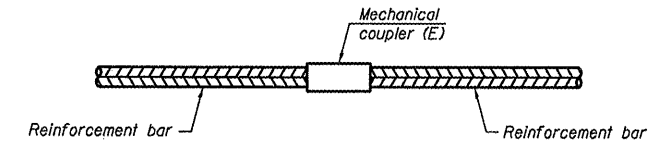
* Epoxy not required on Bar Splicer Assembly components used in conjunction with black bars.

Location	Bar size	No. assemblies required	Table for minimum lap length
APPR. FOOTING	5	38	Table 3
APPR. SLAB	4	23	Table 3
APPR. SLAB	5	44	Table 3



INSTALLATION AND SETTING METHODS

- "A": Set bar splicer assembly by means of a template bolt.
- "B": Set bar splicer assembly by nailing to wood forms or cementing to steel forms.
- (E): Indicates epoxy coating.

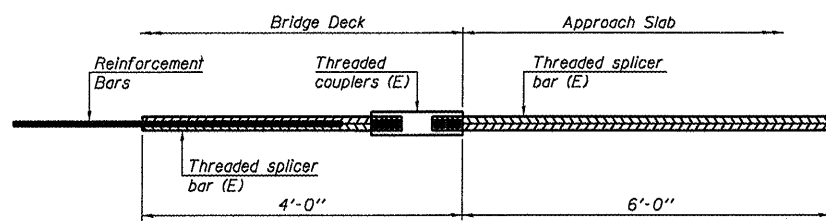


STANDARD MECHANICAL SPLICER

Location	Bar size	No. assemblies required

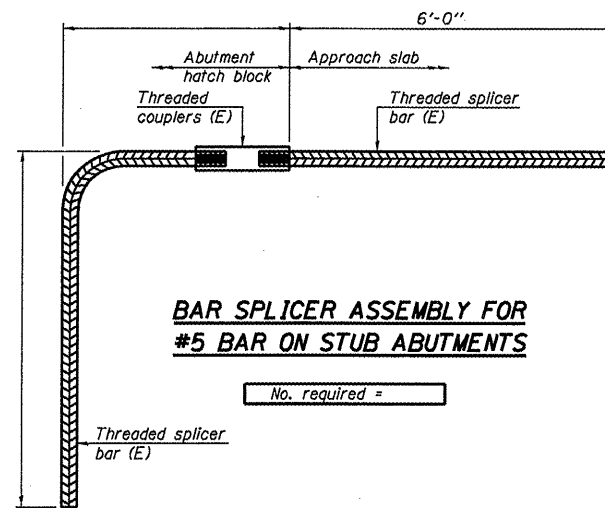
NOTES

Splicer bars shall be deformed with threaded ends and have a minimum 60 ksi yield strength.
 All reinforcement shall be lapped and tied to the splicer bars.
 Bar splicer assemblies shall be epoxy coated according to the requirements for reinforcement bars. See Section 508 of the Standard Specifications.
 See special provision for Mechanical Splicers.
 See approved list of bar splicer assemblies and mechanical splicers for alternatives.



BAR SPLICER ASSEMBLY FOR #5 BAR ON INTEGRAL OR SEMI-INTEGRAL ABUTMENTS

No. required =



BAR SPLICER ASSEMBLY FOR #5 BAR ON STUB ABUTMENTS

No. required =

BSD-1 7-1-10

FILE NAME =	USER NAME = spurlockd	DESIGNED - DBS	REVISED -	STATE OF ILLINOIS DEPARTMENT OF TRANSPORTATION	BAR SPLICER ASSEMBLY AND MECHANICAL SPLICER DETAILS STRUCTURE NO. 053-0163	F.A.P. RTE.	SECTION	COUNTY	TOTAL SHEETS	SHEET NO.
		DRAWN - DBS	REVISED -			786	(97-15D, BR-11)	LIVINGSTON	8	8
		CHECKED -	REVISED -			CONTRACT NO. 66C26				
		DATE - MARCH 2012	REVISED -			ILLINOIS FED. AID PROJECT				
PLOT SCALE = 100.0000' / in.				SCALE:		SHEET NO. 3 OF 3 SHEETS		STA. 310+39.62 TO STA. 310+88.62		
PLOT DATE = 4/2/2012										