

**GENERAL NOTES**

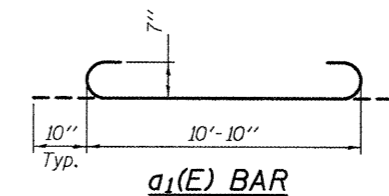
Plan dimensions and details relative to existing plans are subject to nominal construction variations. The Contractor shall field verify existing dimensions and details affecting new construction and make necessary approved adjustments prior to construction or ordering of materials. Such variations shall not be cause for additional compensation for a change in scope of the work, however, the Contractor will be paid for the quantity actually furnished at the unit price bid for the work.

Reinforcement bars designated (E) shall be epoxy coated. The slab surface shall have its final finish tined according to Article 420.09(e)(1) of the Standard Specifications. Cost included with Concrete Superstructures.

\* Remove 7 1/2" of existing HMA overlay and replace with 7 1/2" concrete slab as shown. Slope to match roadway. Cost of removal included with Hot-Mix Asphalt Surface Removal.

**BILL OF MATERIAL**

Bar	No.	Size	Length	Shape
a(E)	18	#5	10'-10"	—
a1(E)	50	#7	12'-6"	U
h(E)	24	#4	11'-10"	—
h1(E)	48	#5	11'-10"	—
Bar Splicers			Each	36
Hot-Mix Asphalt Surface Removal			Sq. Yds.	29.8
Reinforcement Bars, Epoxy Coated			Pound	2260
Concrete Superstructure			Cu. Yds.	6.2



**DESIGN STRESSES**

FIELD UNITS  
 $f'_c = 3,500$  psi  
 $f_y = 60,000$  psi (Reinf.)



DESIGNED: *[Signature]*  
 CHECKED: *[Signature]*  
 DRAWN: Kyle M. Steffen  
 CHECKED: *[Signature]*

EXAMINED: *[Signature]*  
 PASSED: *[Signature]*  
 DATE: MAY 8, 2012

STATE OF ILLINOIS  
 DEPARTMENT OF TRANSPORTATION

GENERAL PLAN & ELEVATION  
 ILLINOIS 116 OVER STREAM  
 SN 053-2557

SHEET NO. 1 OF 2 SHEETS

F.A.P. RTE.	SECTION	COUNTY	TOTAL SHEETS	SHEET NO.
681	(113)CI	LIVINGSTON	7	6
CONTRACT NO. 66C31				
ILLINOIS FED. AID PROJECT				

Expires: November 30, 2012