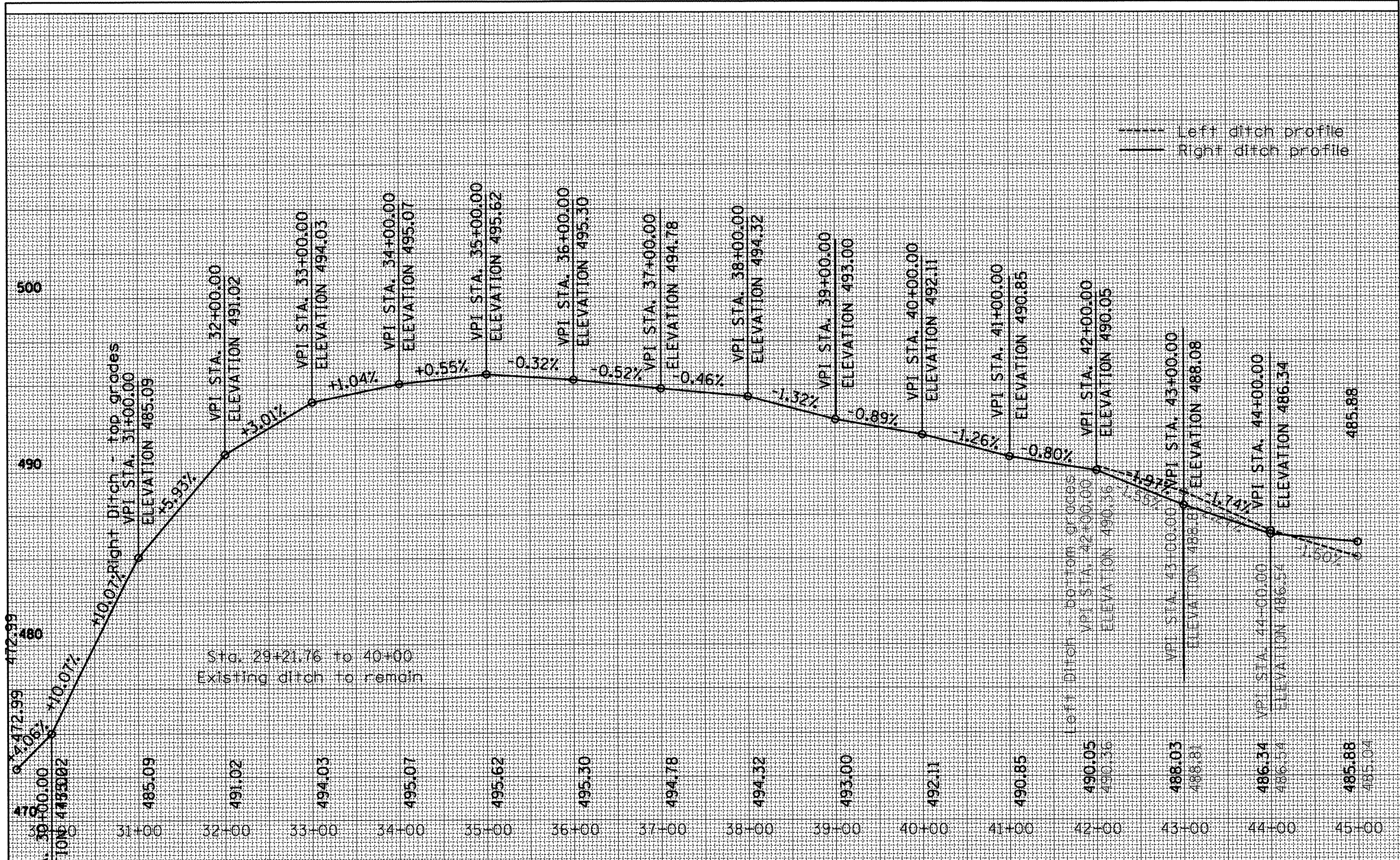


FINAL SURVEY	SORTED	DATE
NOTE BOOK	PLOTTED	
NO.	TEMPLATE	
	AREAS	
	CHECKED	

ORIGINAL SURVEY	SORTED	DATE
NOTE BOOK	PLOTTED	
NO.	TEMPLATE	
	AREAS	
	CHECKED	



--- Left ditch profile  
 --- Right ditch profile

Sta. 29+21.76 to 40+00  
 Existing ditch to remain

FILE NAME x:\468475-new\468475.dgn	USER NAME = evercol	DESIGNED -	REVISED -	<b>STATE OF ILLINOIS DEPARTMENT OF TRANSPORTATION</b>	<b>DITCH PROFILE RAMP D</b>			F.A.P. RTE. 318	SECTION (72-61R)	COUNTY Peoria	TOTAL SHEETS 117	SHEET NO. 31
VPI STA. 30+00.00 ELEVATION 485.09	PLLOT SCALE = 100.0000' / 1"	DRAWN -	REVISED -		SCALE:	SHEET	OF	SHEETS	STA.	TO STA.	CONTRACT NO. 68A30	
VPI STA. 31+00.00 ELEVATION 485.09	PLLOT DATE = 3/14/2012	CHECKED -	REVISED -								ILLINOIS FED. AID PROJECT	
VPI STA. 32+00.00 ELEVATION 491.02		DATE -	REVISED -									