

CURVE DATA, CURVE 2
 C. IL. FRNTRD-2 RTE. 6
 P.I. STA. 73+96.97
 Δ = 85°58'20" (RT)
 T = 605.84'
 R = 650.00'
 L = 975.33'
 PC STA. = 67+91.13
 PT STA. = 77+66.46

(4BBC002)
 MAY L. THOMAS
 (TRUSTEE)

NW 1/4 SEC. 27

FOUND IRON PIPE
 NW. COR., SW. 1/4, SECTION 27
 TION., RBE., 4TH P.M.
 DOC. NO. 2011023111

SW 1/4 SEC. 27

(4BBC001)
 GLENDEN G. HANNAH

CURVE DATA
 MOSSVILLE ROAD (CH 64)
 P.I. STA. 118+34.01
 Δ = 08°14'47" (LT)
 T = 275.36'
 R = 3819.72'
 L = 5549.76'
 PC = STA. 115+58.65
 PT STA. = 121+08.41

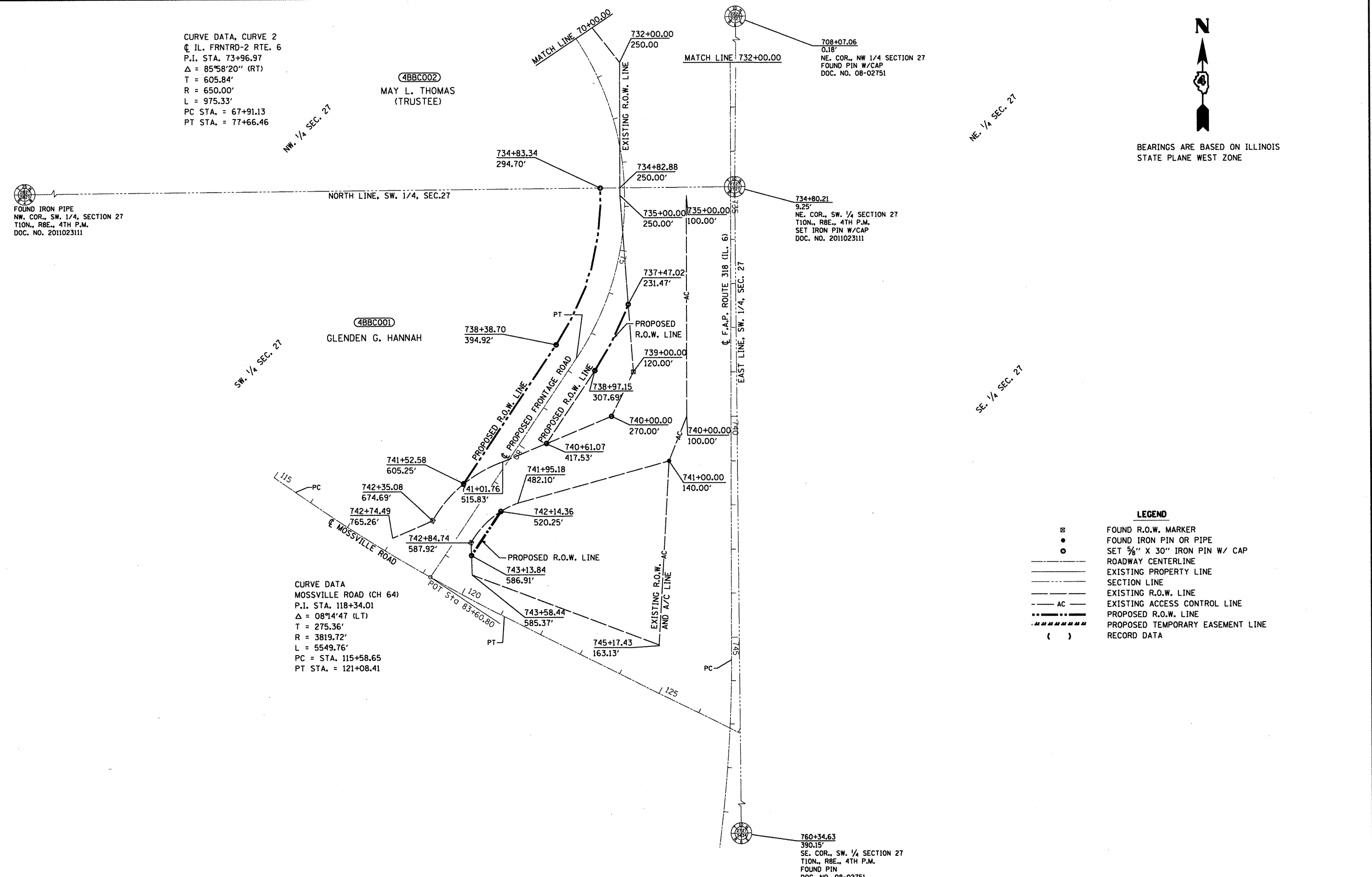
708+07.06
 0.18'
 NE. COR., NW 1/4 SECTION 27
 FOUND PIN W/CAP
 DOC. NO. 08-02751

734+80.21
 9.25'
 NE. COR., SW. 1/4 SECTION 27
 TION., RBE., 4TH P.M.
 SET IRON PIN W/CAP
 DOC. NO. 2011023111

760+34.63
 390.15'
 SE. COR., SW. 1/4 SECTION 27
 TION., RBE., 4TH P.M.
 FOUND PIN
 DOC. NO. 08-02751



BEARINGS ARE BASED ON ILLINOIS
 STATE PLANE WEST ZONE



LEGEND

⊗	FOUND R.O.W. MARKER
●	FOUND IRON PIN OR PIPE
○	SET 5/8" X 30" IRON PIN W/ CAP
—	ROADWAY CENTERLINE
---	EXISTING PROPERTY LINE
---	SECTION LINE
---	EXISTING R.O.W. LINE
---	EXISTING ACCESS CONTROL LINE
---	PROPOSED R.O.W. LINE
---	PROPOSED TEMPORARY EASEMENT LINE
()	RECORD DATA

FILE NAME ROWPLAN1.dgn	USER NAME= eversci	DESIGNED -	REVISED -	STATE OF ILLINOIS DEPARTMENT OF TRANSPORTATION	RIGHT OF WAY PLANS			F.A.P. RTE. 318 (IL. 6)	SECTION (72-6) R	COUNTY PEORIA	TOTAL SHEETS 117	SHEET NO. 119		
	PLOT SCALE 200.0000' / in.	DRAWN -	REVISED -		PROJECT	JOB NO. R-94-011-11	SCALE: 1"=100'		SHEET NO. 1 OF 2 SHEETS		STA. 708+00.00 TO STA. 750+00.00	FED. ROAD DIST. NO.	ILLINOIS	FED. AID PROJECT
	PLOT DATE= 3/15/2012	CHECKED -	REVISED -		CONTRACT NO.									
		DATE -	REVISED -											