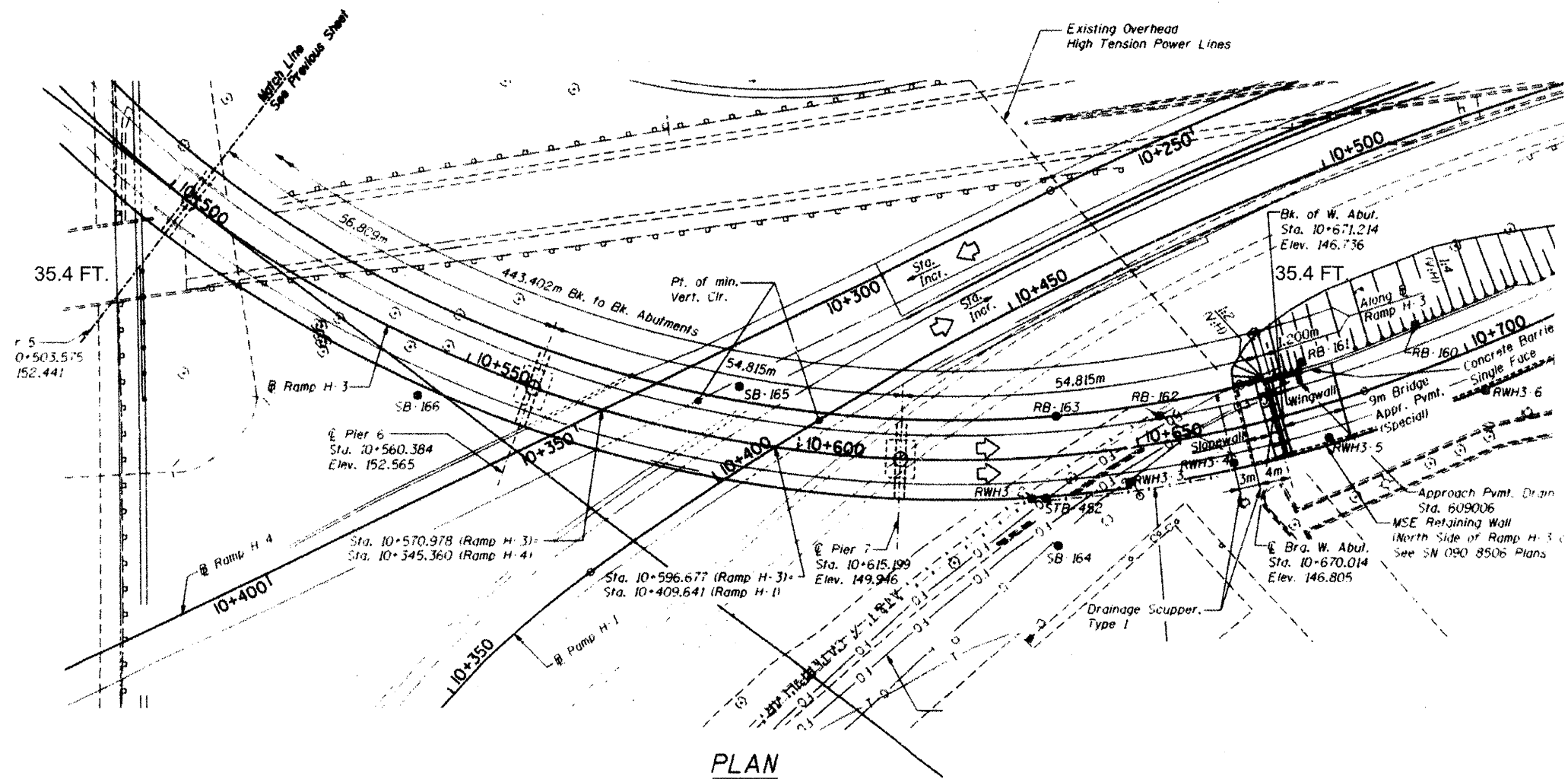
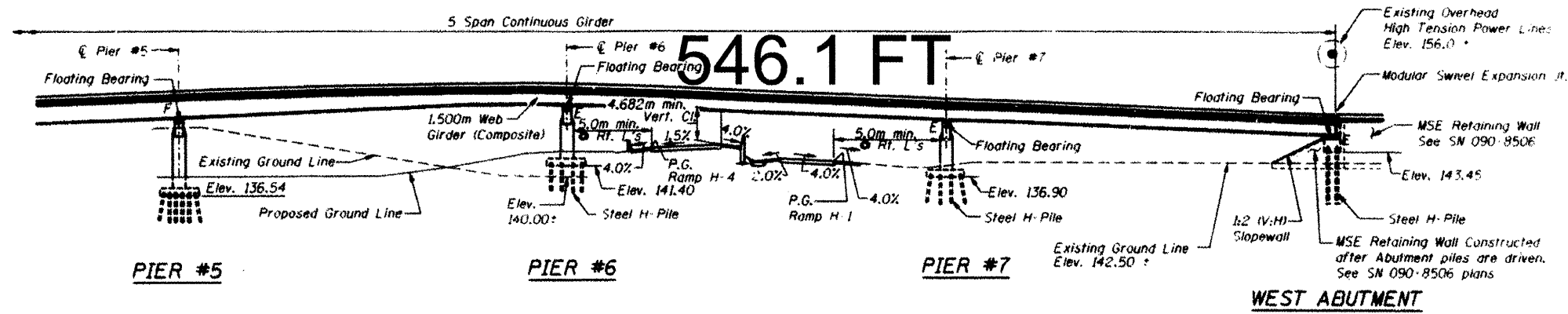


Location 3(IL 40 over I-74 and Farm Creek Diversion Channel) For Information Only S.N. 090-0153



FILE NAME =
04_washing_68A99_June_2012.dgn

USER NAME = AdadeSA

PLOT SCALE = 2:1323 1/4 in.

PLOT DATE = 3/28/2012

DESIGNED	REVISIONS
DRAWN	REVISIONS
CHECKED	REVISIONS
DATE	REVISIONS

STATE OF ILLINOIS
DEPARTMENT OF TRANSPORTATION

SCALE: _____ SHEET _____ OF _____ SHEETS STA. _____ TO STA. _____

F.A. RTE.	SECTION	COUNTY	TOTAL SHEETS	SHEET NO.
Var	D4 Bridge Washing	Tazewell	8	8

CONTRACT NO. 68A99

ILLINOIS FED. AID PROJECT