

STATE OF ILLINOIS
DEPARTMENT OF TRANSPORTATION

F.A.P. RTE.	SECTION	COUNTY	TOTAL SHEETS	SHEET NO.
729	(36CS,34Z-2)DM	VERMILION	3	1
		ILLINOIS	CONTRACT NO. 70922	

INDEX OF SHEETS

- 1 COVER SHEET
- 2 GENERAL NOTES & SUMMARY OF QUANTITIES
- 3 PLAN SHEET

HIGHWAY STANDARDS

- 000001-06 STANDARD SYMBOLS, ABBREVIATIONS, AND PATTERNS
- 001006 DECIMAL OF AN INCH AND OF A FOOT
- 701001-02 OFF-ROAD OPERATIONS, 2L, 2W, MORE THAN 15' (4.5m) AWAY
- 701006-03 OFF-ROAD OPERATIONS, 2L, 2W, 15' (4.5m) TO 24' (600m) FROM PAVEMENT EDGE
- 701301-04 LANE CLOSURE, 2L, 2W SHORT TIME OPERATIONS
- 701501-06 URBAN LANE CLOSURE, 2L, 2W, UNDIVIDED
- 701801-05 LANE CLOSURE MULTI-LANE 1W OR 2W CROSSWALK OR SIDEWALK CLOSURE
- 701901-02 TRAFFIC CONTROL DEVICES

DIVISION OF HIGHWAYS
**PROPOSED
HIGHWAY PLANS**

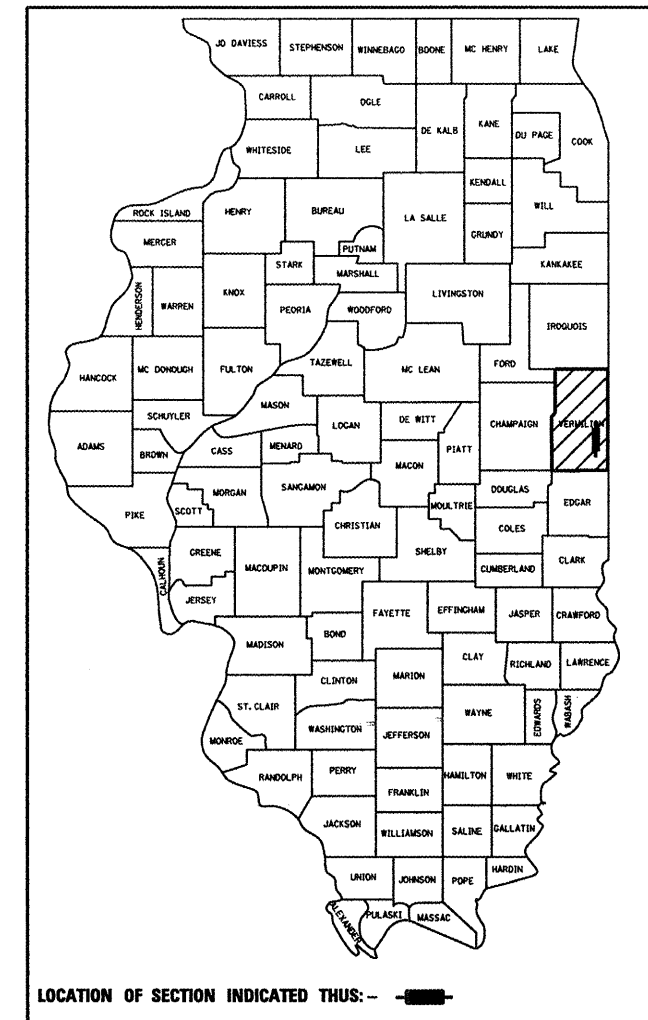
FAP ROUTE 729 (US 136)
SECTION (36CS,34Z-2)DM

**BUILDING REMOVAL IN DANVILLE
VERMILION COUNTY**

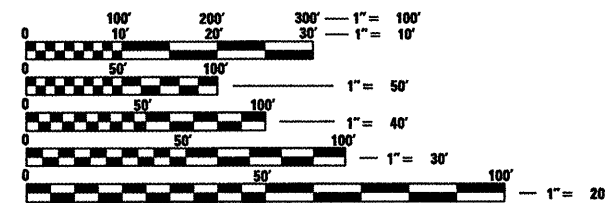
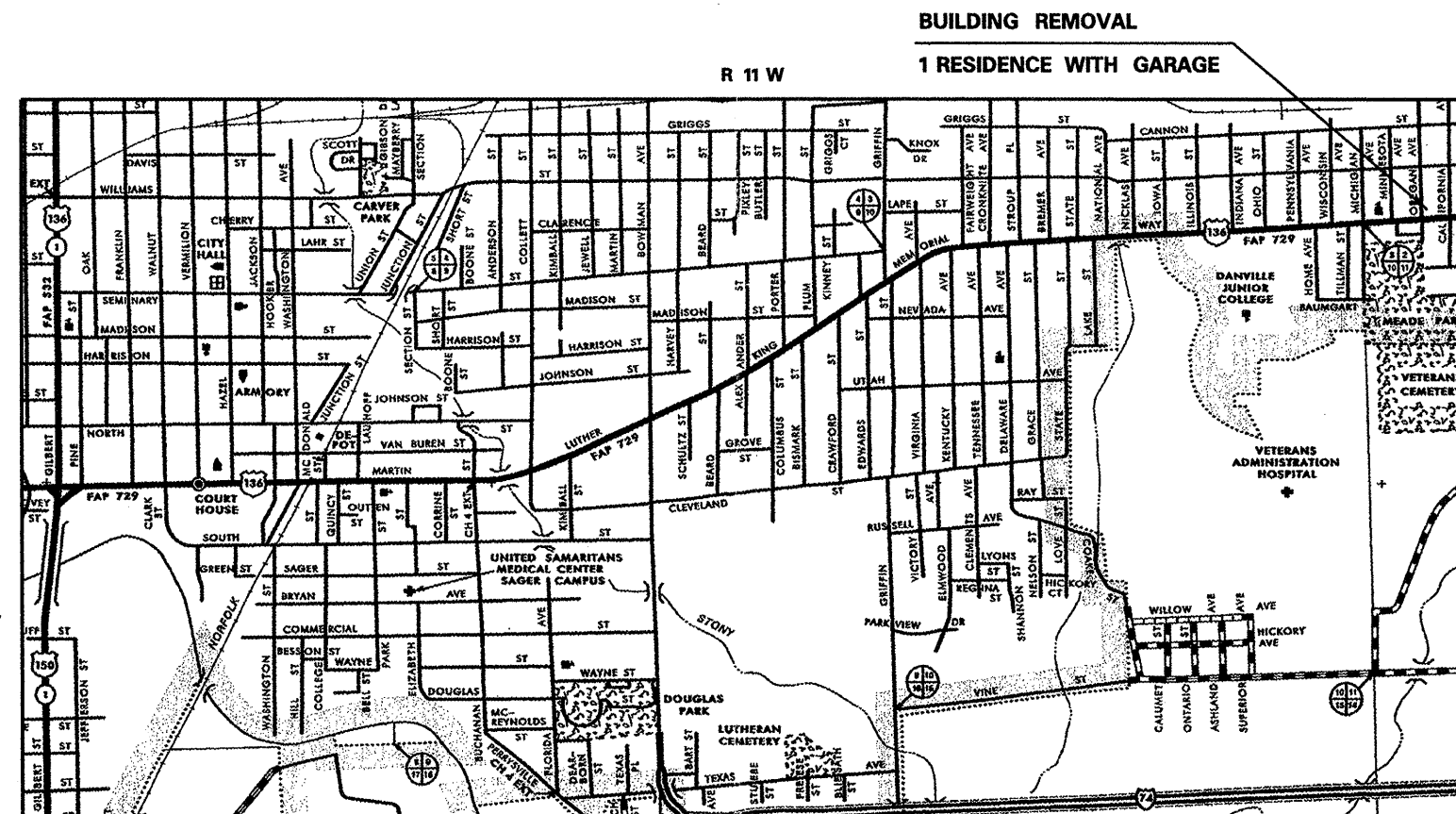
C-95-019-11



D-95-019-11

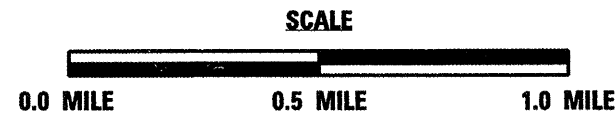


LOCATION OF SECTION INDICATED THUS: —■—



FULL SIZE PLANS HAVE BEEN PREPARED USING STANDARD ENGINEERING SCALES. REDUCED SIZED PLANS WILL NOT CONFORM TO STANDARD SCALES. IN MAKING MEASUREMENTS ON REDUCED PLANS, THE ABOVE SCALES MAY BE USED.

J.U.L.I.E.
JOINT UTILITY LOCATION INFORMATION FOR EXCAVATION
1-800-892-0123
OR 811



CITY OF DANVILLE, VERMILION COUNTY

PROJECT ENGINEER: NANCY FASIG
PROJECT MANAGER: TODD BLACK
PHONE NUMBER: (217)-465-4181
CONTRACT NO. 70922

STATE OF ILLINOIS
DEPARTMENT OF TRANSPORTATION
DIVISION OF HIGHWAYS

SUBMITTED 11/30 2011
Jeff E. Cowzen
DEPUTY DIRECTOR OF HIGHWAYS, REGION ENGINEER

May 11 2012
John D. Baranzelli, P.E.
ENGINEER OF DESIGN AND ENVIRONMENT

May 11 2012
William R. Freyer
DIRECTOR OF HIGHWAYS, CHIEF ENGINEER

**PRINTED BY THE AUTHORITY
OF THE STATE OF ILLINOIS**

GENERAL NOTES

G.N. - 100
ENGLISH UNITS OF MEASUREMENT SHALL GOVERN OVER AND SUPERSEDE ANY METRIC UNITS SHOWN IN THIS CONTRACT. WHERE INCLUDED METRIC UNITS ARE FOR INFORMATION ONLY.

G.N.-100A
ELECTRONIC FILES AND/OR ELECTRONIC SURVEY INFORMATION INCLUDING CADD FILES WILL NOT BE AVAILABLE TO THE CONTRACTOR.

G.N.-107.37A
UTILITY LINES PLOTTED FOR THIS PROJECT WERE LOCATED BY SUBSURFACE UTILITY ENGINEERING (SUE) METHODS AND ESTABLISH HIGH ACCURACY HORIZONTAL DIMENSIONS (QUALITY LEVEL B). HIGHER ACCURACY HORIZONTAL AND VERTICAL INFORMATION (QUALITY LEVEL A) MAY ALSO BE INCLUDED IN THE CONTRACT DOCUMENTS.

UTLILITY COMPANIES MAY BE ADJUSTING THEIR FACILITIES DURING CONSTRUCTION. THE CONTRACTOR SHALL COOPERATE WITH THESE ORGANIZATIONS WHILE THESE ADJUSTMENTS ARE BEING PERFORMED. J.U.L.I.E. - JOINT UTILITY LOCATION INFORMATION FOR EXCAVATORS SYSTEM (800) 892-0123 OR 811.

G.N.-202 -SPL
GRADING SHALL BE DONE BY HAND AROUND LIGHT POLES, UTILITY POLES, SIGN POSTS, SHRUBS, TREES OR OTHER NATURAL OR MAN-MADE OBJECTS WHERE SHALLOW FILLS OR CUTS ARE ADJACENT TO THE ITEMS. IT IS THE INTENT THAT THE LIMITS OF CONSTRUCTION BE SUCH AS TO PRESERVE IN THE THE ORIGINAL STATE AS MUCH AREA OF TEMPORARY EASEMENTS AS POSSIBLE. THE DECISION AS TO ITEMS TO REMAIN IN PLACE SHALL BE AS DIRECTED BY THE ENGINEER.

THIS WORK WILL NOT BE PAID FOR SEPARATELY, BUT SHALL BE CONSIDERED INCLUDED IN THE CONTRACT UNIT PRICE PER LUMP SUM FOR BUILDING REMOVAL NO. 1 AND NO ADDITIONAL COMPENSATION WILL BE ALLOWED.

G.N.-280
TEMPORARY EROSION CONTROL SEEDING IS INCLUDED IN THIS CONTRACT TO SEED DISTURBED EARTH DURING TIME PERIODS WHEN PERMANENT SEEDING IS NOT ALLOWED. SOME OR ALL OF THE TEMPORARY EROSION CONTROL SEEDING WILL BE DELETED IF IT IS POSSIBLE TO PLACE PERMANENT SEEDING ON EARTH AT THE TIME OF THEIR COMPLETION.

NO COMMITMENTS

SUMMARY OF QUANTITIES		LOCATION OF WORK:	URBAN
CODE NO	ITEM	CONSTRUCTION TYPE CODE:	100% STATE
		UNIT	0044
			TOTAL
			QUANTITY
20100110	TREE REMOVAL (6 TO 15 UNITS DIAMETER)	UNIT	60.0
20100210	TREE REMOVAL (OVER 15 UNITS DIAMETER)	UNIT	20.0
21101615	TOPSOIL FURNISH AND PLACE, 4"	SQ YD	950.0
* 25000200	SEEDING, CLASS 2	ACRE	0.2
* 25000400	NITROGEN FERTILIZER NUTRIENT	POUND	18.0
* 25000500	PHOSPHORUS FERTILIZER NUTRIENT	POUND	18.0
* 25000600	POTASSIUM FERTILIZER NUTRIENT	POUND	18.0
* 25100115	MULCH, METHOD 2	ACRE	0.2
28000250	TEMPORARY EROSION CONTROL SEEDING	POUND	20.0
67100100	MOBILIZATION	L SUM	1.0
70102620	TRAFFIC CONTROL AND PROTECTION, STANDARD 701501	L SUM	1.0
70102640	TRAFFIC CONTROL AND PROTECTION, STANDARD 701801	L SUM	1.0
Z0007601	BUILDING REMOVAL NO. 1	L SUM	1.0
* Z0049801	REMOVAL AND DISPOSAL OF FRIABLE ASBESTOS, BUILDING NO. 1	L SUM	1.0
* Z0049901	REMOVAL AND DISPOSAL OF NON-FRIABLE ASBESTOS, BUILDING NO. 1	L SUM	1.0

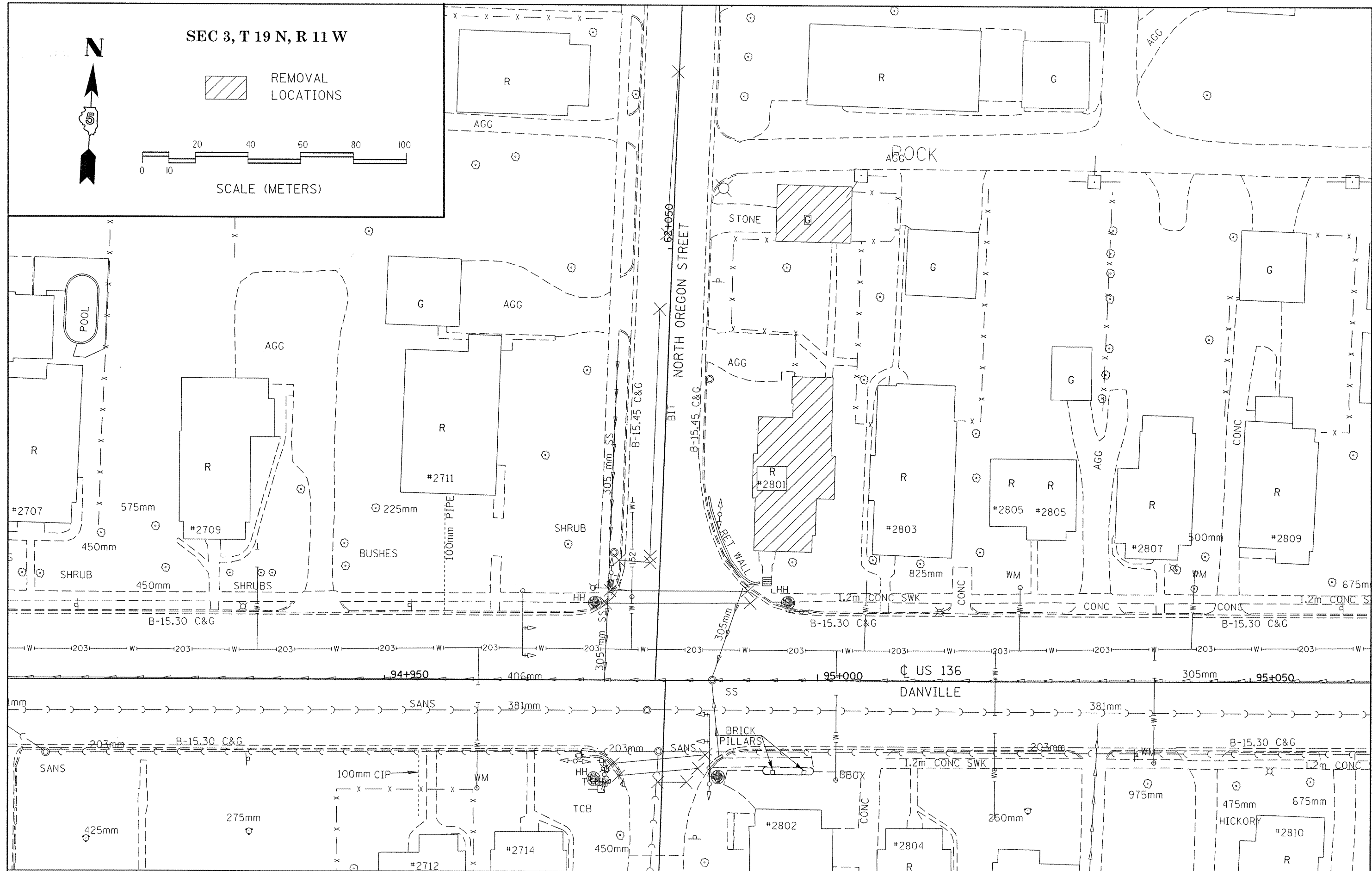
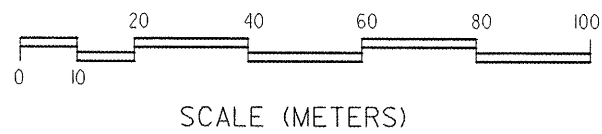
* SPECIALTY ITEMS

FILE NAME =	USER NAME = blackrt	DESIGNED - RTB	REVISED -	STATE OF ILLINOIS DEPARTMENT OF TRANSPORTATION	GENERAL NOTES & SUMMARY OF QUANTITIES	F.A.P. RTE.	SECTION	COUNTY	TOTAL SHEETS	SHEET NO.
c:\pwwork\pvidot\blackrt\0270059\09570922-sht-cover.dgn	DRAWN -	REVISED -	729			(36CS,34Z-2)DM	VERMILION	3	2	
PLOT SCALE = 40.0901' / in.	CHECKED -	REVISED -	CONTRACT NO. 70922							
PLOT DATE = 6/30/2011	DATE - 6-22-11	REVISED -	ILLINOIS FED. AID PROJECT							
				SCALE:	SHEET NO. OF SHEETS	STA.	TO STA.			



SEC 3, T 19 N, R 11 W

REMOVAL LOCATIONS



FILE NAME =	USER NAME = blackrt	DESIGNED -	REVISED -
et:\pwork\pwork\blackrt\08270059\0570	22-shr-plan.dgn	DRAWN -	REVISED -
		CHECKED -	REVISED -
		DATE -	REVISED -

**STATE OF ILLINOIS
DEPARTMENT OF TRANSPORTATION**

PLAN VIEW

SCALE: SHEET NO. OF SHEETS STA. TO STA.

F.A.P. RTE.	SECTION	COUNTY	TOTAL SHEETS	SHEET NO.
729	(36CS, 34Z-2)DM	VERMILION	3	3
CONTRACT NO. 70922			ILLINOIS FED. AID PROJECT	