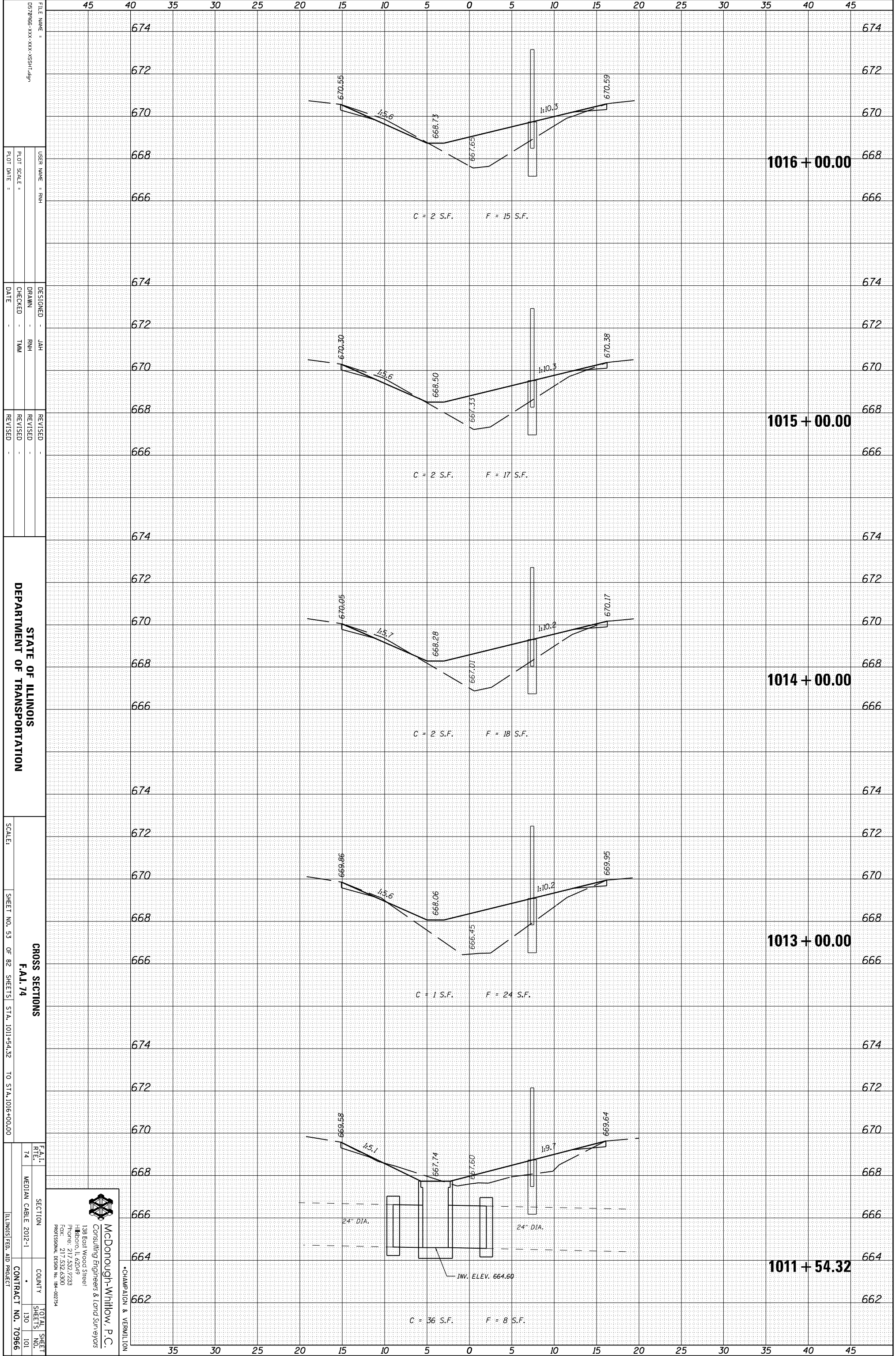


ORIGINAL SURVEY	SURVEYED	BY	DATE
NOTE BOOK	PLOTTED		
	TEMPLATE		
	AREAS		
	CHECKED		

FINAL SURVEY	SURVEYED	BY	DATE
NOTE BOOK	PLOTTED		
	TEMPLATE		
	AREAS		
	CHECKED		



FILE NAME = 057966-XX-XX-XX-XX-SSHT-09  
 USER NAME = RHM  
 DESIGNER = JAH  
 DRAWN = RHM  
 CHECKED = TMM  
 DATE =  
 REVISED =  
 REVISED =  
 REVISED =  
 REVISED =

STATE OF ILLINOIS  
 DEPARTMENT OF TRANSPORTATION

SCALE: SHEET NO. 53 OF 82 SHEETS STA. 1011+54.32 TO STA. 1016+00.00

CROSS SECTIONS  
 F.A.I. 74

F.A.I. 74  
 SECTION  
 COUNTY  
 TOTAL SHEETS 130  
 SHEETS NO. 101  
 CONTRACT NO. 70966  
 ILLINOIS FED. AID PROJECT

**McDonough-Whitlow, P.C.**  
 Consulting Engineers & Land Surveyors  
 138 East Wood Street  
 Hillboro, IL 62549  
 Phone: 217.532.7233  
 Fax: 217.532.6300  
 PROFESSIONAL DESIGN NO. 194-002734

CHAMPAIGN & VERNILION