

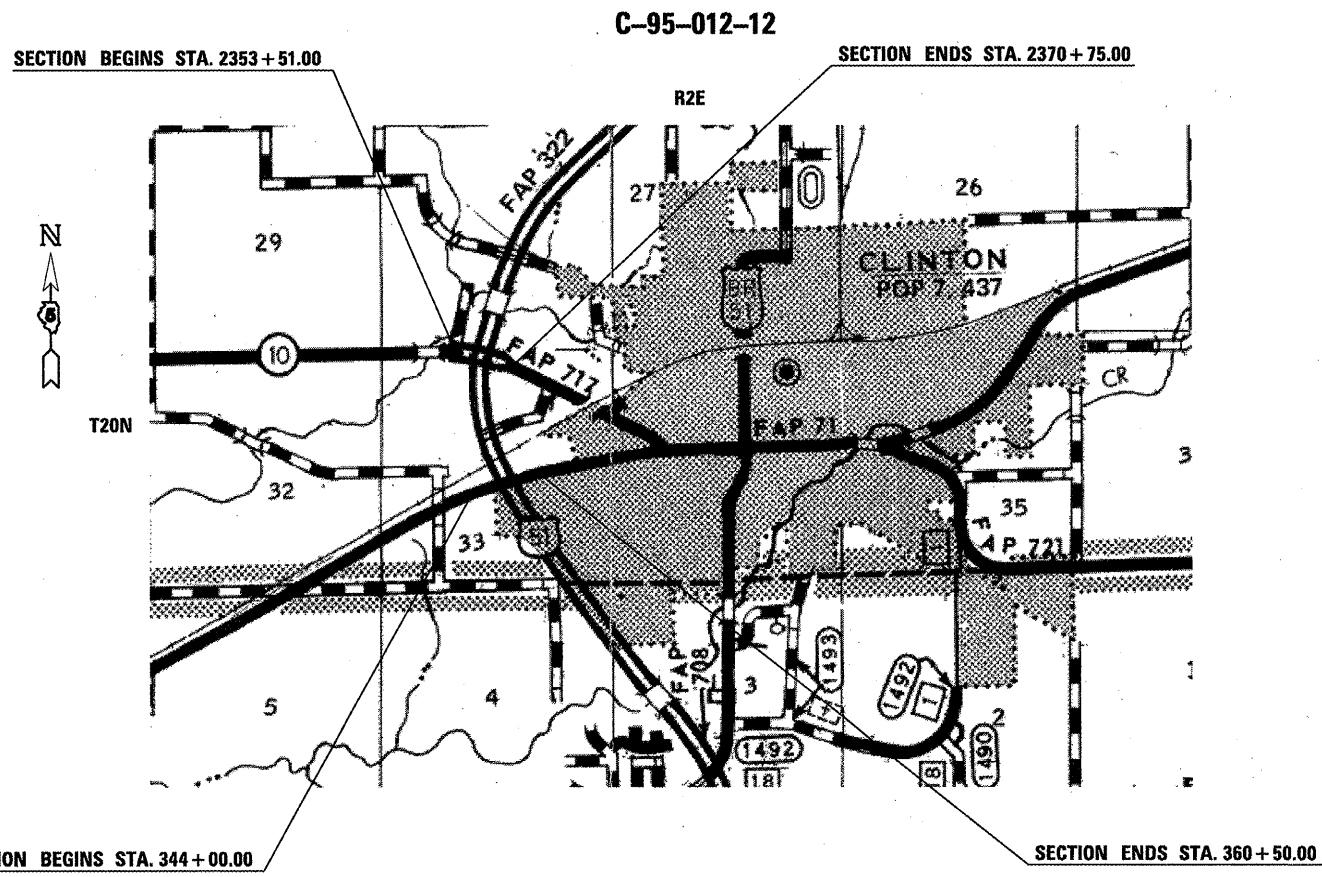
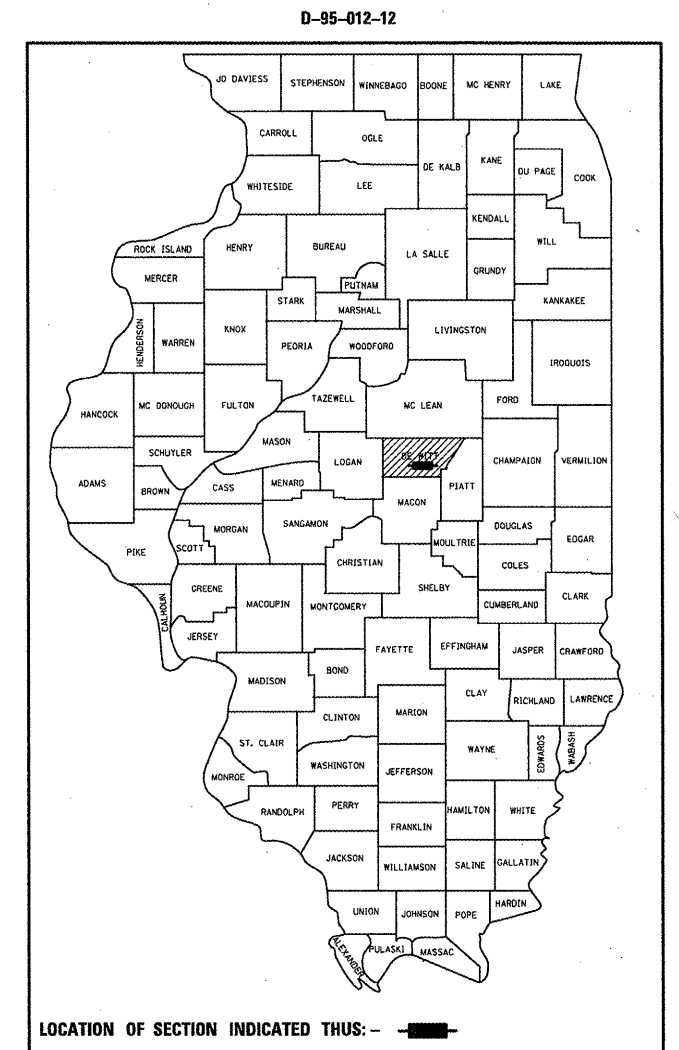
STATE OF ILLINOIS
DEPARTMENT OF TRANSPORTATION
DIVISION OF HIGHWAYS

**PROPOSED
HIGHWAY PLANS**

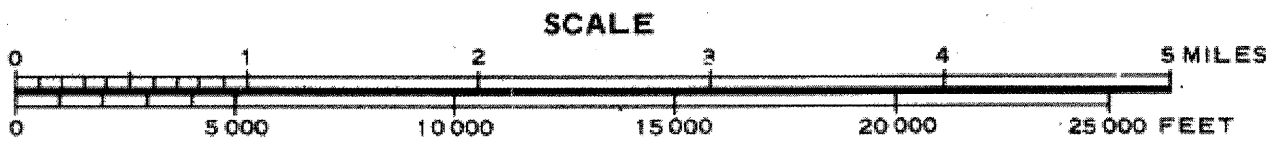
F.A.P. ROUTE 71 (IL 54) & F.A.P. ROUTE 717 (IL 10)
SECTION D5 PATCHING 2013-2
PAVEMENT PATCHING
DEWITT COUNTY
AT U.S. 51 W. OF CLINTON

F.A.P. RTE.	SECTION	COUNTY	TOTAL SHEETS	SHEET NO.
71&717	D5 PATCHING 2013-2	DEWITT	11	1
		ILLINOIS	CONTRACT NO. 70974	

FOR INDEX OF SHEETS, SEE SHEET NO. 2
FOR SUMMARY OF QUANTITIES, SEE SHEET NO. 3



GROSS LENGTH = 3,374.00 FT. = 0.639 MILE
NET LENGTH = 3,374.00 FT. = 0.639 MILE



CURRENT ADT			
OTHER PRINCIPAL ARTERIAL FAP 71 (IL 54)			
LEG "A"	ADT(2012) = 2,450	SU = 4.6%	MU = 4.4%
LEG "B"	ADT(2012) = 4,750	SU = 6.0%	MU = 1.4%
OTHER PRINCIPAL ARTERIAL FAP 717 (IL 10)			
LEG "A"	ADT(2012) = 2,100	SU = 7.8%	MU = 9.0%
LEG "B"	ADT(2012) = 2,050	SU = 5.0%	MU = 5.3%

J.U.L.I.E.
JOINT UTILITY LOCATION INFORMATION FOR EXCAVATION
1-800-892-0123 TOWNSHIPS: CLINTONIA
OR 811

PROJECT ENGINEER: NANCY FASIG
SQUAD LEADER: STEVE COOMBES
(217) 465-4181

CONTRACT NO. 70974

STATE OF ILLINOIS
DEPARTMENT OF TRANSPORTATION
DIVISION OF HIGHWAYS

SUBMITTED: 3/29 2012

Justin A. Cooney
DEPUTY DIRECTOR OF HIGHWAYS, REGION ENGINEER

May 11 2012
John D. Baranelli, P.E.
ENGINEER OF DESIGN AND ENVIRONMENT

May 11 2012
William R. Frey, Jr.
DIRECTOR OF HIGHWAYS, CHIEF ENGINEER

PRINTED BY THE AUTHORITY
OF THE STATE OF ILLINOIS

INDEX OF SHEETS

SHEET NO.	DESCRIPTION
1	COVER SHEET
2	INDEX OF SHEETS & LIST OF HIGHWAY STANDARDS
2	GENERAL NOTES
3	SUMMARY OF QUANTITIES
4-6	EXISTING TYPICAL CROSS SECTIONS
7-10	SCHEDULE OF QUANTITIES
11	TRAFFIC CONTROL DETAIL

LIST OF HIGHWAY STANDARDS

STANDARD NO.	DESCRIPTION
000001-06	STANDARD SYMBOLS, ABBREVIATIONS AND PATTERNS
001001-02	AREAS OF REINFORCEMENT BARS
001006	DECIMAL OF AN INCH AND OF A FOOT
420001-07	PAVEMENT JOINTS
442101-07	CLASS B PATCHES
701201-04	LANE CLOSURE, 2L, 2W, DAY ONLY, FOR SPEEDS >= 45 M.P.H.
701301-04	LANE CLOSURE, 2L, 2W, SHORT TIME OPERATIONS
701901-02	TRAFFIC CONTROL DEVICES

GENERAL NOTES

G.N.-100
 ENGLISH UNITS OF MEASUREMENT SHALL GOVERN OVER AND SUPERSEDE ANY METRIC UNITS SHOWN IN THIS CONTRACT. WHERE INCLUDED, METRIC UNITS ARE FOR INFORMATION ONLY.

G.N.-442B -- PATCHING SCHEDULES
 THE PATCHING SCHEDULES INCLUDED IN THE PLANS REPRESENT THE BEST INFORMATION AVAILABLE AT THE TIME OF COMPLETION OF THE PLANS FOR LETTING. VARIATIONS IN LOCATION AND SIZES OF BOTH FULL-DEPTH AND PARTIAL-DEPTH PATCHES MAY OCCUR.

G.N.-1004.01
 COARSE AGGREGATE GRADATION CA-10 MAY BE USED WHENEVER COARSE AGGREGATE CA-6 IS SPECIFIED IN THE STANDARD SPECIFICATIONS.

COMMITMENTS:
 THERE ARE NO COMMITMENTS FOR THIS CONTRACT.

FILE NAME =	USER NAME = coombessf	DESIGNED -	REVISED -	STATE OF ILLINOIS DEPARTMENT OF TRANSPORTATION	INDEX OF SHEETS, HIGHWAY STANDARDS & GENERAL NOTES	F.A.P. RTE.	SECTION	COUNTY	TOTAL SHEETS	SHEET NO.
ct:\pwwork\pwwork\coombessf\0302169\09	0974-sht-gerinote.dgn	DRAWN -	REVISED -			71&717	D5 PATCHING 2013-2	DEWITT	11	2
	PLOT SCALE = 40.0000' / in.	CHECKED -	REVISED -		SCALE:					
	PLOT DATE = 3/27/2012	DATE -	REVISED -		SHEET NO. OF SHEETS STA. TO STA.					CONTRACT NO. 70974
										ILLINOIS FED. AID PROJECT

SUMMARY OF QUANTITIES

LOCATION OF WORK:
 COUNTY:
 FUNDING BREAKOUT:
 CONSTRUCTION TYPE CODE:

URBAN
 FAP 71 (IL 54)
 DEWITT CO.
 TWO LANE
 100 % STATE
 0005

RURAL
 FAP 717 (IL 10)
 DEWITT CO.
 RURAL TWO LANE
 100 % STATE
 0005

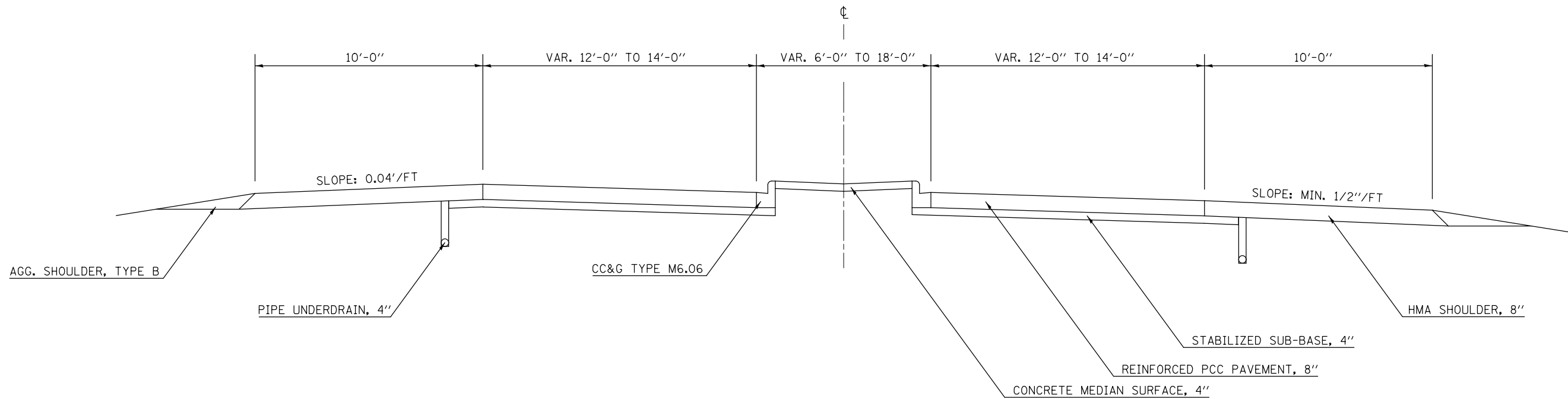
CODE NO.	DESCRIPTION	UNIT	TOTAL QUANTITY	QUANTITY	QUANTITY
44200934	CLASS B PATCHES, TYPE II, 8 INCH	SQ YD	642.0	401.0	241.0
44200942	CLASS B PATCHES, TYPE III, 8 INCH	SQ YD	41.0	0.0	41.0
44200944	CLASS B PATCHES, TYPE IV, 8 INCH	SQ YD	126.0	60.0	66.0
44201299	DOWEL BARS, 1 1/2"	EACH	1,758.0	1,075.0	683.0
44213100	PAVEMENT FABRIC	SQ YD	166.0	60.0	106.0
44213200	SAW CUTS	FT	4,401.0	2,531.0	1,870.0
44213208	TIE BARS, 1 1/4"	EACH	81.0	15.0	66.0
67100100	MOBILIZATION	L SUM	1.0	0.5	0.5
70100450	TRAFFIC CONTROL AND PROTECTION, STANDARD 701201	L SUM	1.0	0.5	0.5

* SPECIALTY ITEMS

FILE NAME =	USER NAME = coombessf	DESIGNED -	REVISED -	STATE OF ILLINOIS DEPARTMENT OF TRANSPORTATION	SUMMARY OF QUANTITIES	F.A.P. RTE.	SECTION	COUNTY	TOTAL SHEETS	SHEET NO.
71&717	D5 PATCHING 2013-2	DEWITT	11			3				
CONTRACT NO. 70974										
ILLINOIS FED. AID PROJECT										
PLOT SCALE = 48.0000' / in.		CHECKED -	REVISED -	SCALE:	SHEET NO. OF SHEETS	STA.	TO STA.			
PLOT DATE = 3/29/2012		DATE -	REVISED -							

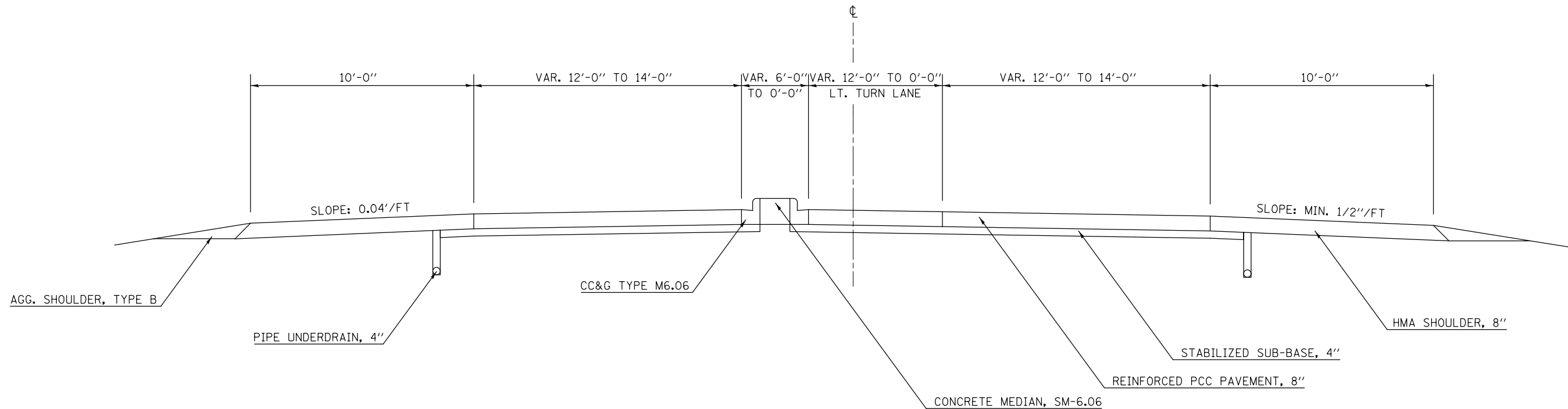
TYPICAL SECTION ①

FAP 71 (IL 54)
 STA. 343+42.18 TO STA. 354+75.73
 FULL SUPERELEVATION = 0.03'/FT
 STANDARD SUPERELEVATION TRANSITION
 ATTAINED, STA. 343+42.18 TO STA. 344+00
 REMOVED, STA. 353+25.73 TO STA. 354+75.73



TYPICAL SECTION ②

FAP 71 (IL 54)
 STA. 354+75.73 TO STA. 367+83.46
 OMISSION: STA. 355+72.88 TO STA. 356+97.12



FILE NAME =	USER NAME = coombessf	DESIGNED -	REVISED -
ct:\pw\work\p\idot\coombessf\d0302169\0570974-Sht-Typical.dgn		DRAWN -	REVISED -
	PLOT SCALE = 40.0000' / in.	CHECKED -	REVISED -
	PLOT DATE = 3/27/2012	DATE -	REVISED -

STATE OF ILLINOIS
 DEPARTMENT OF TRANSPORTATION

TYPICAL SECTIONS

SCALE: SHEET OF SHEETS STA. TO STA.

F.A.P. RTE.	SECTION	COUNTY	TOTAL SHEETS	SHEET NO.
71&717	D5 PATCHING 2013-2	DEWITT	11	4
CONTRACT NO. 70974			ILLINOIS FED. AID PROJECT	

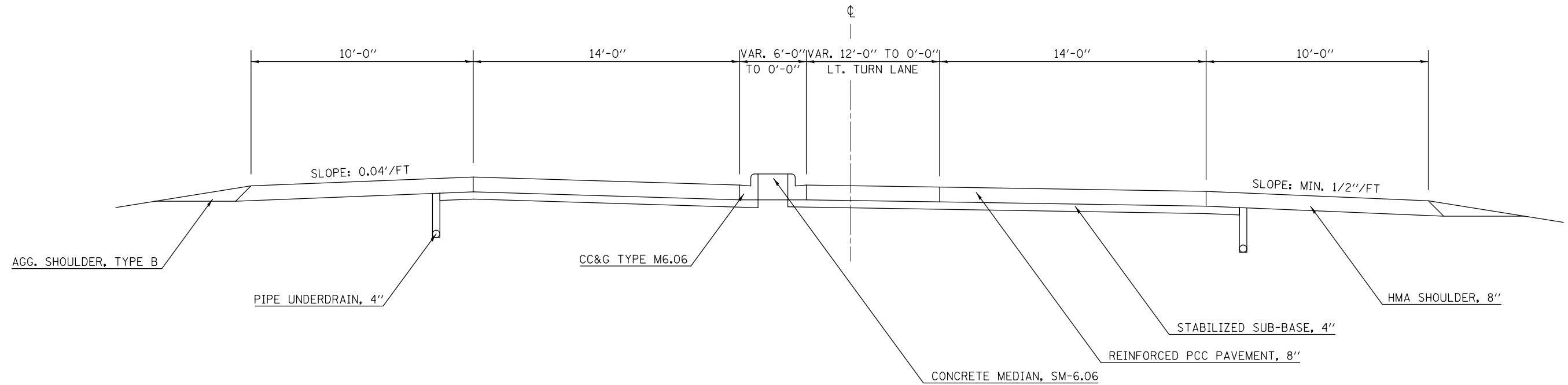
TYPICAL SECTION ③

FAP 717 (IL 10)
 STA. 2352+74.56 TO STA. 2361+17.01
 FULL SUPERELEVATION = 0.038'/FT

STA. 2364+77.84 TO STA. 2372+69.45
 FULL SUPERELEVATION = 0.022'/FT

STANDARD SUPERELEVATION TRANSITION
 ATTAINED, STA. 2352+74.56 TO STA. 2354+24.56
 REMOVED, STA. 2359+67.01 TO STA. 2361+17.01

STANDARD SUPERELEVATION TRANSITION
 ATTAINED, STA. 2364+77.84 TO STA. 2366+02.84
 REMOVED, STA. 2371+44.45 TO STA. 2372+69.45



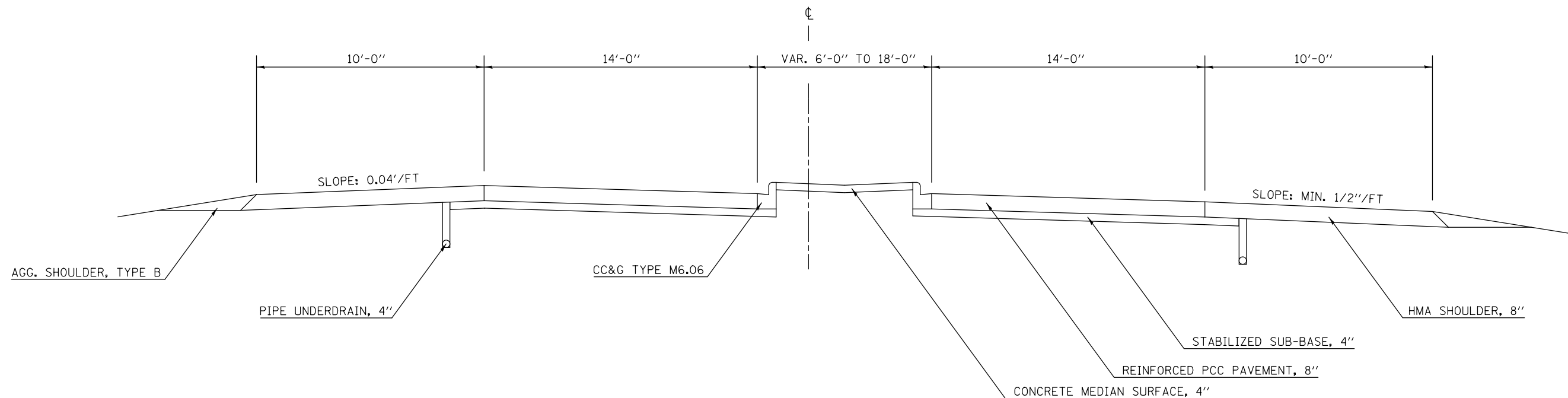
TYPICAL SECTION ④

FAP 717 (IL 10)
 STA. 2352+74.56 TO STA. 2361+17.01
 FULL SUPERELEVATION = 0.038'/FT

STA. 2364+77.84 TO STA. 2372+69.45
 FULL SUPERELEVATION = 0.022'/FT

STANDARD SUPERELEVATION TRANSITION
 ATTAINED, STA. 2352+74.56 TO STA. 2354+24.56
 REMOVED, STA. 2359+67.01 TO STA. 2361+17.01

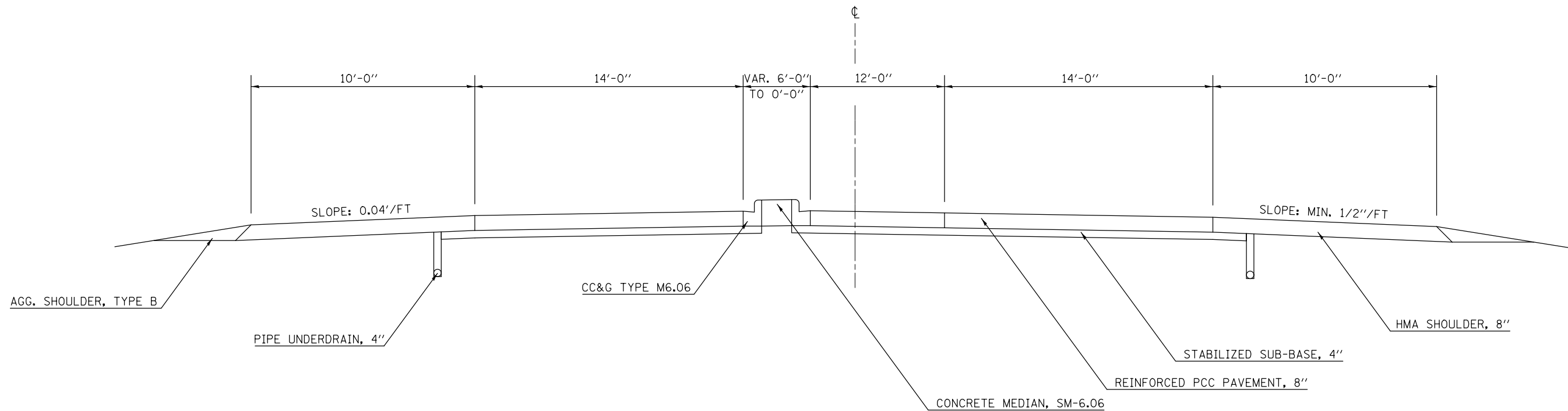
STANDARD SUPERELEVATION TRANSITION
 ATTAINED, STA. 2364+77.84 TO STA. 2366+02.84
 REMOVED, STA. 2371+44.45 TO STA. 2372+69.45



FILE NAME =	USER NAME = coombessf	DESIGNED -	REVISED -	STATE OF ILLINOIS DEPARTMENT OF TRANSPORTATION	TYPICAL SECTIONS			F.A.P. RTE.	SECTION	COUNTY	TOTAL SHEETS	SHEET NO.
et:\pwork\pwork\coombessf\d0302169\0570974-Sht-Typical.dgn	DESIGNED -	REVISED -	71&717					D5 PATCHING 2013-2	DEWITT	11	5	
PLOT SCALE = 40.0000' / in.	CHECKED -	REVISED -	CONTRACT NO. 70974									
PLOT DATE = 3/27/2012	DATE -	REVISED -	ILLINOIS FED. AID PROJECT									
				SCALE:	SHEET	OF	SHEETS	STA.	TO	STA.		

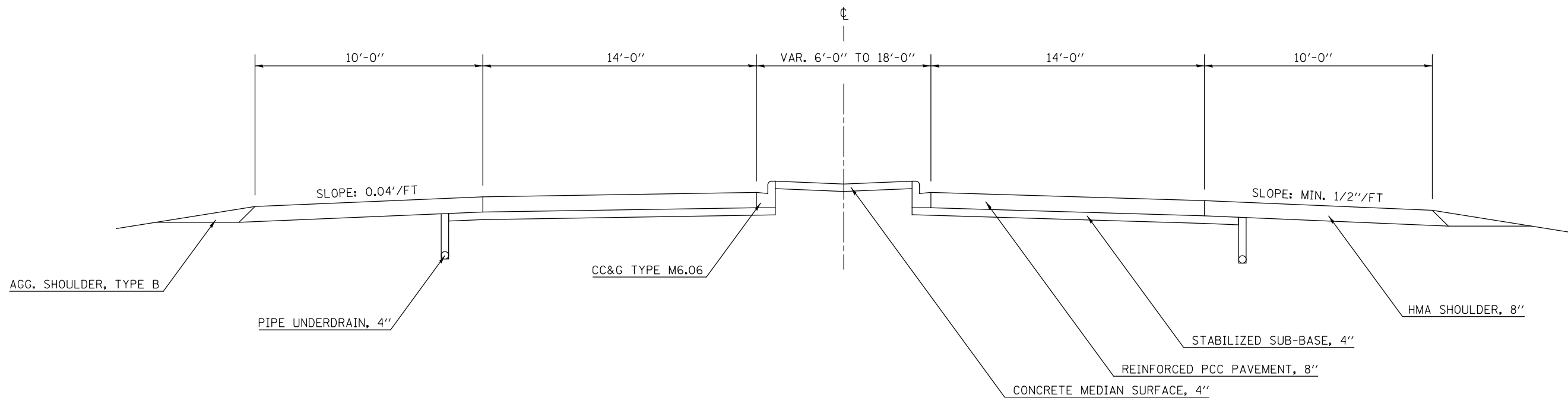
TYPICAL SECTION 5

FAP 717 (IL 10)
 STA. 2352+28.93 TO STA. 2352+74.56
 STA. 2361+17.01 TO STA. 2364+77.84
 STA. 2372+69.45 TO STA. 2373+29.29
 OMISSION: STA. 2362+19.98 TO STA. 2363+40.02



TYPICAL SECTION 6

FAP 717 (IL 10)
 STA. 2352+28.93 TO STA. 2352+74.56
 STA. 2361+17.01 TO STA. 2364+77.84
 STA. 2372+69.45 TO STA. 2373+29.29
 OMISSION: STA. 2362+19.98 TO STA. 2363+40.02



FILE NAME =	USER NAME = coombessf	DESIGNED -	REVISED -	STATE OF ILLINOIS DEPARTMENT OF TRANSPORTATION	TYPICAL SECTIONS				F.A.P. RTE.	SECTION	COUNTY	TOTAL SHEETS	SHEET NO.
et:\pw\work\p\idot\coombessf\d0302169\0570974-Sht-Typical.dgn		DRAWN -	REVISED -		71&717	D5 PATCHING 2013-2	DEWITT	11	6				
PLOT SCALE = 40.0000' / in.		CHECKED -	REVISED -		SCALE: SHEET OF SHEETS STA. TO STA.				CONTRACT NO. 70974				
PLOT DATE = 3/27/2012		DATE -	REVISED -		ILLINOIS FED. AID PROJECT								

SCHEDULE OF QUANTITIES

IL 54 PATCHING SCHEDULE										
STATION	DIRECTION	LANE	LENGTH	WIDTH	44200934	44200944	44201299	44213200	44213208	44213100
					CLASS B PATCHES, TYPE II, 8.0" (SQ YD)	CLASS B PATCHES, TYPE IV, 8.0" (SQ YD)	DOWEL BARS 1 1/2" (EACH)	SAW CUTS (FT)	TIE BARS 1 1/4" (EACH)	PAVEMENT FABRIC (SQ YD)
			(FT)	(FT)						
344+00.00	EB		6	12	8.0	0.0	20	48.0	0	0.0
344+50.00	EB		6	12	8.0	0.0	20	48.0	0	0.0
345+50.00	EB		6	12	8.0	0.0	20	48.0	0	0.0
346+00.00	EB		6	15	10.0	0.0	26	57.0	0	0.0
346+15.00	EB		6	17	11.3	0.0	30	63.0	0	0.0
347+00.00	EB		6	15	10.0	0.0	26	57.0	0	0.0
347+50.00	EB		6	15	10.0	0.0	26	57.0	0	0.0
348+00.00	EB		6	15	10.0	0.0	26	57.0	0	0.0
348+50.00	EB		6	15	10.0	0.0	26	57.0	0	0.0
349+00.00	EB		6	15	10.0	0.0	26	57.0	0	0.0
351+00.00	EB		6	15	10.0	0.0	26	57.0	0	0.0
351+50.00	EB		6	15	10.0	0.0	26	57.0	0	0.0
352+75.00	EB		30	18	0.0	60.0	48	114.0	15	60.0
353+30.00	EB	LT TURN	6	12	8.0	0.0	20	54.0	0	0.0
353+50.00	EB		6	16	10.7	0.0	28	60.0	0	0.0
353+85.00	EB		6	16	10.7	0.0	28	60.0	0	0.0
354+00.00	EB		6	15	10.0	0.0	26	57.0	0	0.0
354+00.00	EB	LT TURN	6	11	7.3	0.0	18	51.0	0	0.0
354+30.00	EB		6	15	10.0	0.0	26	57.0	0	0.0
354+30.00	EB	LT TURN	6	11	7.3	0.0	18	51.0	0	0.0
354+80.00	EB		6	16	10.7	0.0	28	60.0	0	0.0
354+80.00	EB	LT TURN	6	11	7.3	0.0	18	51.0	0	0.0
355+00.00	EB	LT TURN	6	12	8.0	0.0	20	54.0	0	0.0
355+20.00	WB		6	16	10.7	0.0	28	60.0	0	0.0
355+25.00	EB	LT TURN	6	12	8.0	0.0	20	54.0	0	0.0
355+30.00	EB		6	15	10.0	0.0	26	57.0	0	0.0
356+89.00	WB	LT TURN	6	17	11.3	0.0	30	69.0	0	0.0
356+91.00	WB		6	17	11.3	0.0	30	63.0	0	0.0
356+92.00	EB		6	19	12.7	0.0	34	69.0	0	0.0
357+20.00	WB		6	15	10.0	0.0	26	57.0	0	0.0
357+50.00	EB		6	14	9.3	0.0	24	54.0	0	0.0
357+50.00	WB	LT TURN	6	12	8.0	0.0	20	48.0	0	0.0
357+80.00	WB	LT TURN	6	11	7.3	0.0	18	45.0	0	0.0
SUB TOTALS					304.0 (SQ YD)	60.0 (SQ YD)	832.0 (EACH)	1908.0 (FT)	15.0 (EACH)	60.0 (SQ YD)

SCHEDULE OF QUANTITIES

IL 54 PATCHING SCHEDULE (CONT'D)										
STATION	DIRECTION	LANE	LENGTH	WIDTH	44200934	44200944	44201299	44213200	44213208	44213100
					CLASS B PATCHES, TYPE II, 8.0" (SQ YD)	CLASS B PATCHES, TYPE IV, 8.0" (SQ YD)	DOWEL BARS 1 1/2" (EACH)	SAW CUTS (FT)	TIE BARS 1 1/4" (EACH)	PAVEMENT FABRIC (SQ YD)
358+00.00	WB		6	16	10.7	0.0	28	60.0	0	0.0
358+00.00	WB	LT TURN	6	11	7.3	0.0	18	51.0	0	0.0
358+50.00	EB		6	14	9.3	0.0	24	54.0	0	0.0
358+50.00	WB	LT TURN	6	11	7.3	0.0	18	51.0	0	0.0
358+70.00	WB	LT TURN	6	11	7.3	0.0	18	51.0	0	0.0
359+00.00	EB		6	14	9.3	0.0	24	54.0	0	0.0
359+00.00	WB	LT TURN	6	12	8.0	0.0	20	54.0	0	0.0
359+50.00	WB	LT TURN	6	11	7.3	0.0	18	51.0	0	0.0
359+80.00	WB	LT TURN	6	9	6.0	0.0	14	45.0	0	0.0
360+00.00	WB	LT TURN	6	8.5	5.7	0.0	13	43.5	0	0.0
360+30.00	EB		6	14	9.3	0.0	24	54.0	0	0.0
360+50.00	EB		6	14	9.3	0.0	24	54.0	0	0.0
SUB TOTALS					97.0 (SQ YD)	0.0 (SQ YD)	243.0 (EACH)	622.5 (FT)	0.0 (EACH)	0.0 (SQ YD)

	44200934	44200944	44201299	44213200	44213208	44213100
	CLASS B PATCHES, TYPE II, 8.0" (SQ YD)	CLASS B PATCHES, TYPE IV, 8.0" (SQ YD)	DOWEL BARS 1 1/2" (EACH)	SAW CUTS (FT)	TIE BARS 1 1/4" (EACH)	PAVEMENT FABRIC (SQ YD)
IL 54 TOTALS	401.0 (SQ YD)	60.0 (SQ YD)	1075.0 (EACH)	2530.5 (FT)	15.0 (EACH)	60.0 (SQ YD)

SCHEDULE OF QUANTITIES

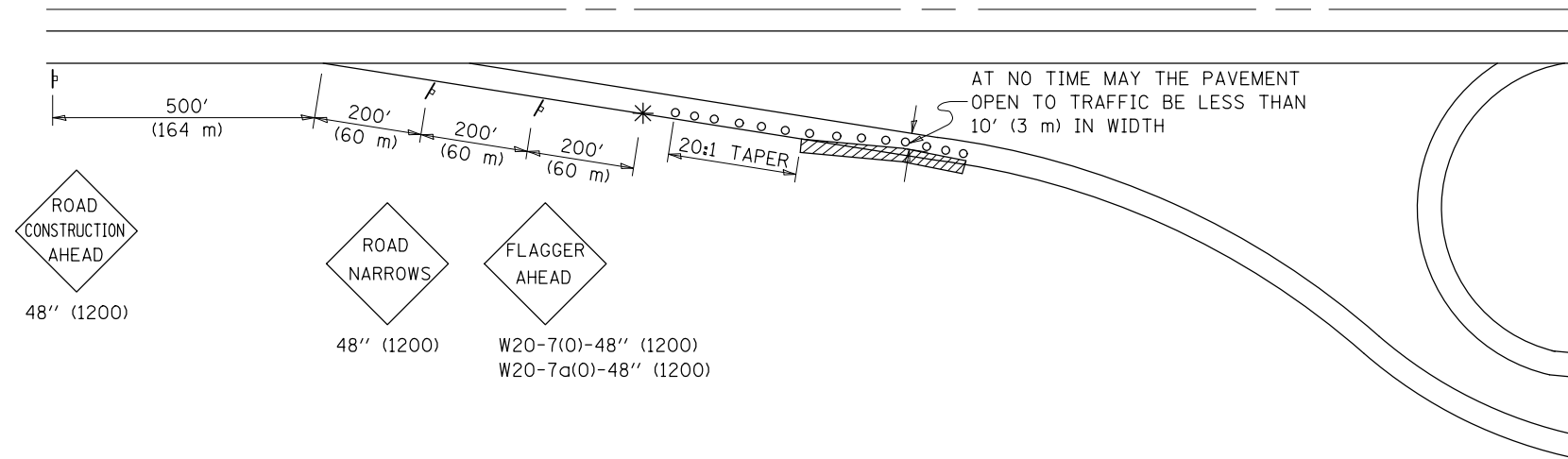
IL 10 PATCHING SCHEDULE											
STATION	DIRECTION	LANE	LENGTH	WIDTH	44200934	44200942	44200944	44201299	44213200	44213208	44213100
					CLASS B PATCHES, TYPE II, 8.0" (SQ YD)	CLASS B PATCHES, TYPE III, 8.0" (SQ YD)	CLASS B PATCHES, TYPE IV, 8.0" (SQ YD)	DOWEL BARS 11/2" (EACH)	SAW CUTS (FT)	TIE BARS 1 1/4" (EACH)	PAVEMENT FABRIC (SQ YD)
			(FT)	(FT)	(SQ YD)	(SQ YD)	(SQ YD)	(EACH)	(FT)	(EACH)	(SQ YD)
2353+51.00	EB		6	12	8.0	0.0	0.0	20	48.0	0	0.0
2354+12.00	EB		6	14.5	9.7	0.0	0.0	25	55.5	0	0.0
2354+24.00	EB		6	15	10.0	0.0	0.0	26	57.0	0	0.0
2354+72.00	EB		6	15	10.0	0.0	0.0	26	57.0	0	0.0
2355+30.00	EB		6	21	14.0	0.0	0.0	38	75.0	0	0.0
2355+80.00	WB		15	14	0.0	23.3	0.0	24	72.0	0	23.3
2356+00.00	EB		6	15	10.0	0.0	0.0	26	57.0	0	0.0
2356+30.00	EB		6	15	10.0	0.0	0.0	26	57.0	0	0.0
2357+62.00	EB		6	15	10.0	0.0	0.0	26	57.0	0	0.0
2359+00.00	EB		21	16	0.0	0.0	37.3	42	90.0	11	37.3
2360+00.00	EB	LT TURN	8	11.5	10.2	0.0	0.0	19	58.5	0	0.0
2360+00.00	WB		11	14	0.0	17.1	0.0	24	64.0	0	17.1
2360+52.00	EB	RT TURN	7	9	7.0	0.0	0.0	14	48.0	0	0.0
2361+00.00	WB		6	14	9.3	0.0	0.0	24	54.0	0	0.0
2361+34.00	WB		6	14	9.3	0.0	0.0	24	54.0	0	0.0
2361+45.00	WB	RT TURN	42	6	0.0	0.0	28.0	16	102.0	21	28.0
2361+50.00	WB		6	14	9.3	0.0	0.0	24	54.0	0	0.0
2363+00.00	WB	LT TURN	6	11	7.3	0.0	0.0	18	57.0	0	0.0
2364+00.00	EB		6	14	9.3	0.0	0.0	24	54.0	0	0.0
2364+50.00	WB	LT TURN	6	11	7.3	0.0	0.0	18	57.0	0	0.0
2364+83.00	WB		6	15	10.0	0.0	0.0	26	57.0	0	0.0
2364+83.00	WB	LT TURN	6	11	7.3	0.0	0.0	18	57.0	0	0.0
2365+00.00	WB	LT TURN	6	11	7.3	0.0	0.0	18	60.0	0	0.0
2365+50.00	WB	LT TURN	6	11	7.3	0.0	0.0	18	51.0	0	0.0
2365+73.00	WB	LT TURN	6	11	7.3	0.0	0.0	18	60.0	0	0.0
2366+00.00	WB	LT TURN	6	9	6.0	0.0	0.0	14	45.0	0	0.0
2366+30.00	WB	LT TURN	6	8	5.3	0.0	0.0	12	75.0	0	0.0
2366+68.00	EB		6	14	9.3	0.0	0.0	24	54.0	0	0.0
2368+20.00	EB		6	14	9.3	0.0	0.0	24	54.0	0	0.0
2369+23.00	EB		6	14	9.3	0.0	0.0	24	54.0	0	0.0
2370+75.00	CL	REMOVE RUMBLE	33	3	11.0	0.0	0.0	3	75.0	34	0.0
SUB TOTALS					240.6	40.4	65.3	683.0	1870.0	66.0	105.7
					(SQ YD)	(SQ YD)	(SQ YD)	(EACH)	(FT)	(EACH)	(SQ YD)

SCHEDULE OF QUANTITIES

IL 10 PATCHING SCHEDULE (CONT'D)							
	44200934	44200942	44200944	44201299	44213200	44213208	44213100
	CLASS B PATCHES, TYPE II, 8.0" (SQ YD)	CLASS B PATCHES, TYPE III, 8.0" (SQ YD)	CLASS B PATCHES, TYPE IV, 8.0" (SQ YD)	DOWEL BARS 11/2" (EACH)	SAW CUTS (FT)	TIE BARS 1 1/4" (EACH)	PAVEMENT FABRIC (SQ YD)
IL 10 TOTALS	240.6 (SQ YD)	40.4 (SQ YD)	65.3 (SQ YD)	683.0 (EACH)	1870.0 (FT)	66.0 (EACH)	105.7 (SQ YD)

	44200934	44200942	44200944	44201299	44213200	44213208	44213100
	CLASS B PATCHES, TYPE II, 8.0" (SQ YD)	CLASS B PATCHES, TYPE III, 8.0" (SQ YD)	CLASS B PATCHES, TYPE IV, 8.0" (SQ YD)	DOWEL BARS 11/2" (EACH)	SAW CUTS (FT)	TIE BARS 1 1/4" (EACH)	PAVEMENT FABRIC (SQ YD)
GRAND TOTALS	641.6 (SQ YD)	40.4 (SQ YD)	125.3 (SQ YD)	1758.0 (EACH)	4400.5 (FT)	81.0 (EACH)	165.7 (SQ YD)
FINAL TOTALS	642.0 (SQ YD)	41.0 (SQ YD)	126.0 (SQ YD)	1758.0 (EACH)	4401.0 (FT)	81.0 (EACH)	166.0 (SQ YD)

**APPLICATION NO. 1
DAY OPERATION ONLY
PARTIAL RAMP CLOSURE**



SYMBOLS

- (APPLICATION NO. 1) TYPE I OR II BARRICADES OR DRUMS @ 50' (15 m) CTS.
- ⊗ (APPLICATION NO. 2) TYPE I OR II BARRICADES OR DRUMS @ 25' (7.5 m) CTS. W/STEADY BURNING LIGHTS
- * (APPLICATION NO. 1) FLAGGER PLACED AS DIRECTED BY THE ENGINEER
- ‡ SIGN ON PORTABLE OR PERMANENT SUPPORT
- ▨ WORK AREA

TYPICAL APPLICATIONS

- PAVEMENT PATCHING
- PIPE UNDERDRAINS
- HMA RESURFACING

GENERAL NOTES

CONSTRUCTION OPERATIONS SHALL BE CONFINED TO AN AREA NARROW ENOUGH THAT A MINIMUM OF 10' (3 m) OF PAVEMENT SHALL BE OPEN TO TRAFFIC AT ALL TIMES.

FULL WIDTH PAVEMENT SHALL BE OPEN TO TRAFFIC AT NIGHT.

WHEN NO WORK IS BEING PERFORMED, THE FLAGGER WILL NOT BE REQUIRED. IF THE FLAGGER IS NOT PRESENT, THE FLAGGER SIGNS SHALL BE REMOVED OR COVERED.

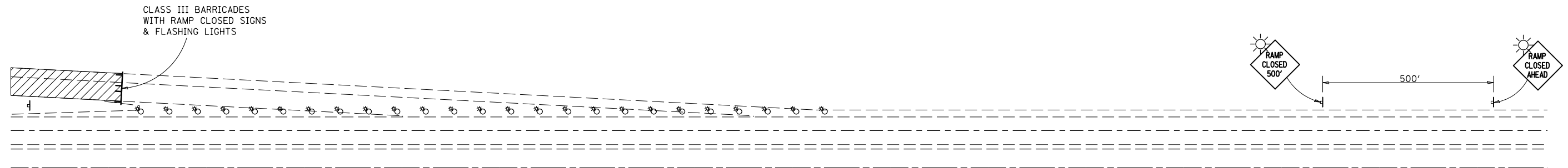
ALL SIGNS SHALL BE POST MOUNTED IF WORK IN THE AREA EXCEEDS FOUR DAYS OF DAYTIME OPERATIONS.

LONGITUDINAL DIMENSIONS MAY BE ADJUSTED SLIGHTLY TO FIT FIELD CONDITIONS.

ALL VEHICLES, EQUIPMENT, WORKERS (EXCEPT FLAGGER) AND THEIR ACTIVITIES ARE RESTRICTED AT ALL TIMES TO ONE SIDE OF THE PAVEMENT UNLESS OTHERWISE AUTHORIZED BY THE DISTRICT ENGINEER.

Traffic Control for all ramps shall be in accordance with the appropriate application of plan detail **TRAFFIC CONTROL FOR RAMPS** and will not be paid for separately, but shall be included in the contract lump sum price for Traffic Control and Protection, Standard 701201.

**APPLICATION NO. 2
RAMP CLOSURE**



GENERAL NOTES

STEADY BURN LIGHTS ARE NOT REQUIRED FOR DAYTIME OPERATIONS.

CONTACT THE DISTRICT TRAFFIC OPERATIONS ENGINEER AT 217-465-4181, ONE WEEK PRIOR TO CLOSING THE RAMP.

Note: All dimensions are in INCHES (millimeters) unless otherwise shown.

FILE NAME =	USER NAME = coombessf	DESIGNED -	REVISED - 11/06
ct:\pw\work\p\idot\coombessf\d0302169\0570974-sht-details.dgn		DRAWN -	REVISED -
	PLOT SCALE = 40.0000' / in.	CHECKED -	REVISED -
	PLOT DATE = 3/28/2012	DATE -	REVISED -

**STATE OF ILLINOIS
DEPARTMENT OF TRANSPORTATION**

TRAFFIC CONTROL FOR RAMPS

SCALE: SHEET NO. OF SHEETS STA. TO STA.

DISTRICT 5 DETAIL NO. 70103710

F.A.P. RTE.	SECTION	COUNTY	TOTAL SHEETS	SHEET NO.
71&717	D5 PATCHING 2013-2	DEWITT	11	11
FED. ROAD DIST. NO. ILLINOIS FED. AID PROJECT			CONTRACT NO. 70974	