

F.A.P. RTE.	SECTION	COUNTY	TOTAL SHEETS	SHEET NO.
75	84-12; 11-3		729	1

* SANGAMON & CHRISTIAN

INDEX OF SHEETS

INDEX INCLUDED ON SHEET 2 OF 729

IDOT HIGHWAY STANDARDS

LIST OF HIGHWAY STANDARDS ON SHEET 2 OF 729

**STATE OF ILLINOIS
DEPARTMENT OF TRANSPORTATION
DIVISION OF HIGHWAYS**

**PROPOSED FEDERAL AID
HIGHWAY PLANS**

F.A.P. ROUTE 75 (IL ROUTE 29)

SECTION 84-12; 11-3

PROJECT ACF-HPP-0075 (156)

0.8 MILES SOUTH OF BERRY TO 1.2 MILES SOUTH OF EDINBURG

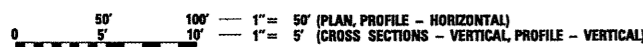
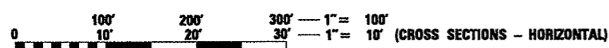
FOUR LANE EXPRESSWAY

SANGAMON AND CHRISTIAN COUNTIES

C-96-505-07

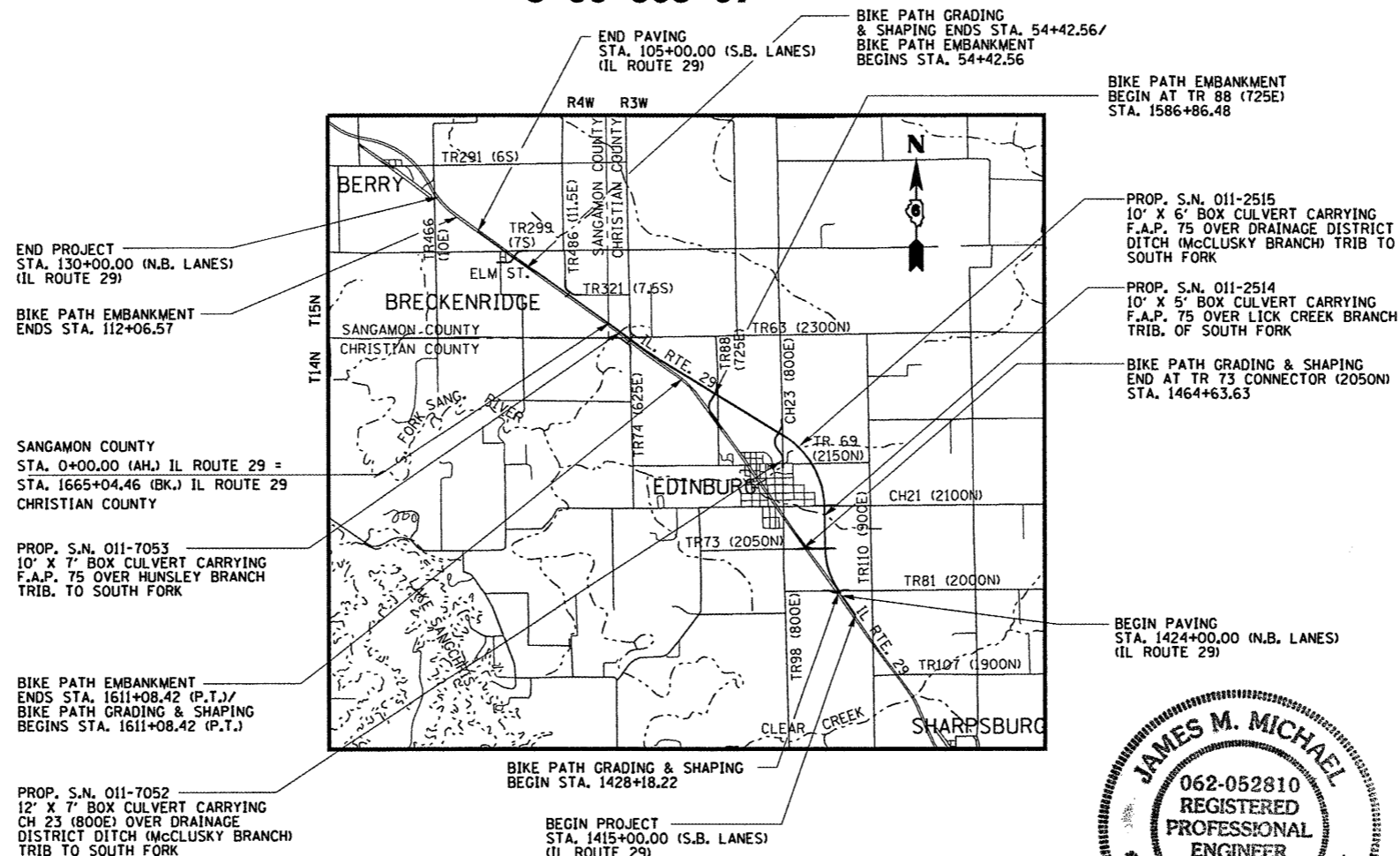
DESIGN DESIGNATION:

FAP 75
RURAL ARTERIAL
ADT = 20,000 (2025)
1/2 SU = 4.6
1/2 MU = 5.2



FULL SIZE PLANS HAVE BEEN PREPARED USING STANDARD ENGINEERING SCALES. REDUCED SIZED PLANS WILL NOT CONFORM TO STANDARD SCALES. IN MAKING MEASUREMENTS ON REDUCED PLANS, THE ABOVE SCALES MAY BE USED.

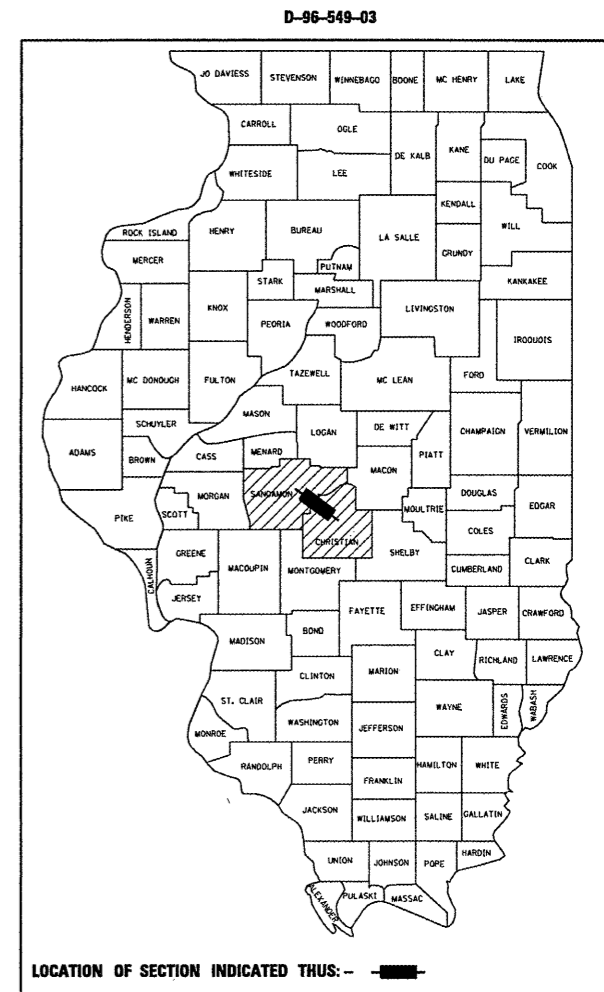
J.U.L.I.E.
JOINT UTILITY LOCATION INFORMATION FOR EXCAVATION
1-800-892-0123



LOCATION MAP



PROJECT GROSS AND NET LENGTH = 38,280 FEET (7.250 MILES)
DESIGN DESIGNATION - 1804 (25) ARTERIAL 4.69 (FD-20)

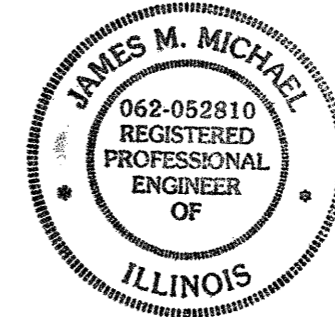


STATE OF ILLINOIS
DEPARTMENT OF TRANSPORTATION
DIVISION OF HIGHWAYS

SUBMITTED March 23, 2012
Reg. 20 March
DEPUTY DIRECTOR OF HIGHWAYS, REGIONAL ENGINEER

May 11, 2012
John D. Baranzelli, P.E.
acting ENGINEER OF DESIGN AND ENVIRONMENT

May 11, 2012
William R. Freyer
acting DIRECTOR OF HIGHWAYS, CHIEF ENGINEER



SIGNATURE: [Signature]
DATE SIGNED: 3/28/12
LICENSE EXPIRATION DATE: 11/30/13

CMT CRAWFORD MURPHY & TILLY, INC.
CONSULTING ENGINEERS
SPRINGFIELD, IL ■ AURORA, IL ■ PEORIA, IL
ROCKFORD, IL ■ ST. LOUIS, MO ■ CHICAGO, IL
EDWARDSVILLE, IL ■ EAST ALTON, IL

PROJECT ENGINEER: JEFF MEYERS (217) 782-4761
SQUAD LEADER: MARCUS BRUCE (217) 521-0946