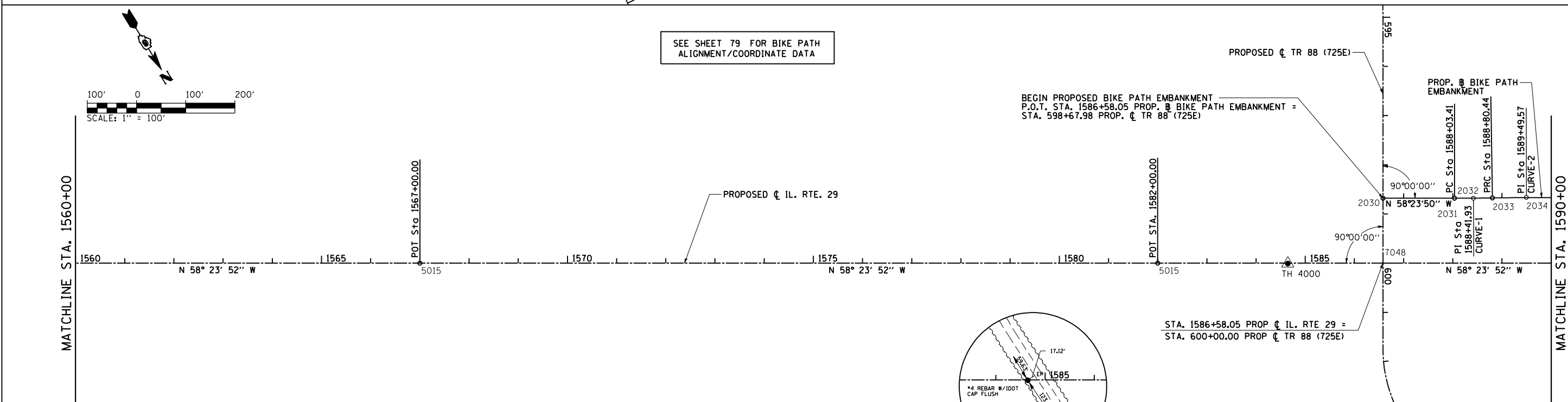
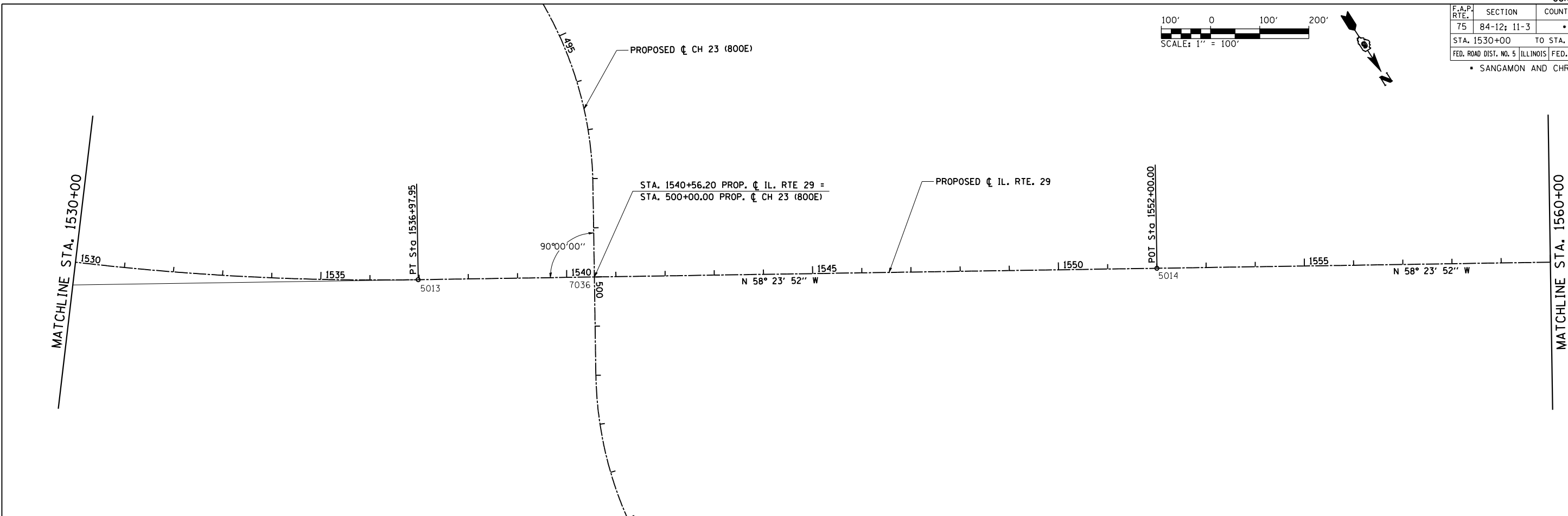
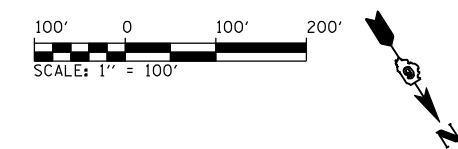
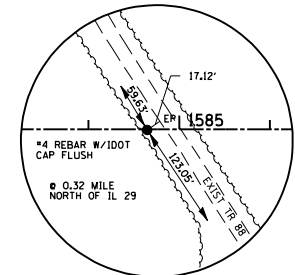


F.A.P. RTE.	SECTION	COUNTY	TOTAL SHEETS	SHEET NO.
75	84-12; 11-3	•	729	66
STA. 1530+00 TO STA. 1590+00				
FED. ROAD DIST. NO. 5 ILLINOIS FED. AID PROJECT				
• SANGAMON AND CHRISTIAN				



SEE SHEET 79 FOR BIKE PATH ALIGNMENT/COORDINATE DATA

BEGIN PROPOSED BIKE PATH EMBANKMENT
 P.O.T. STA. 1586+58.05 PROP. CL BIKE PATH EMBANKMENT =
 STA. 598+67.98 PROP. CL TR 88 (725E)



IDOT HORIZONTAL CONTROL - 4000
 STATION 1584+64.61, 0.81' RT.
 N: 1095989.348
 E: 2512070.532

REVISIONS	
NAME	DATE

ILLINOIS DEPARTMENT OF TRANSPORTATION
HORIZONTAL CONTROL
 IL. RTE 29 CL
 SCALE: 1" = 100'
 DATE: 03/06/2012
 DRAWN BY: R.A.H.
 CHECKED BY: J.M.M.

Default
 L:\DOT\0306601\Draw\Sheets\0306601\Draw\72829-sht-ATB-ALC-004.dgn
 3/6/2012