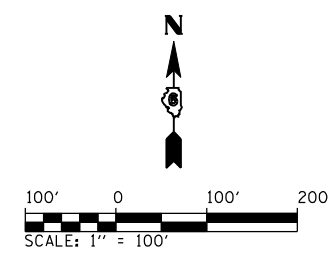
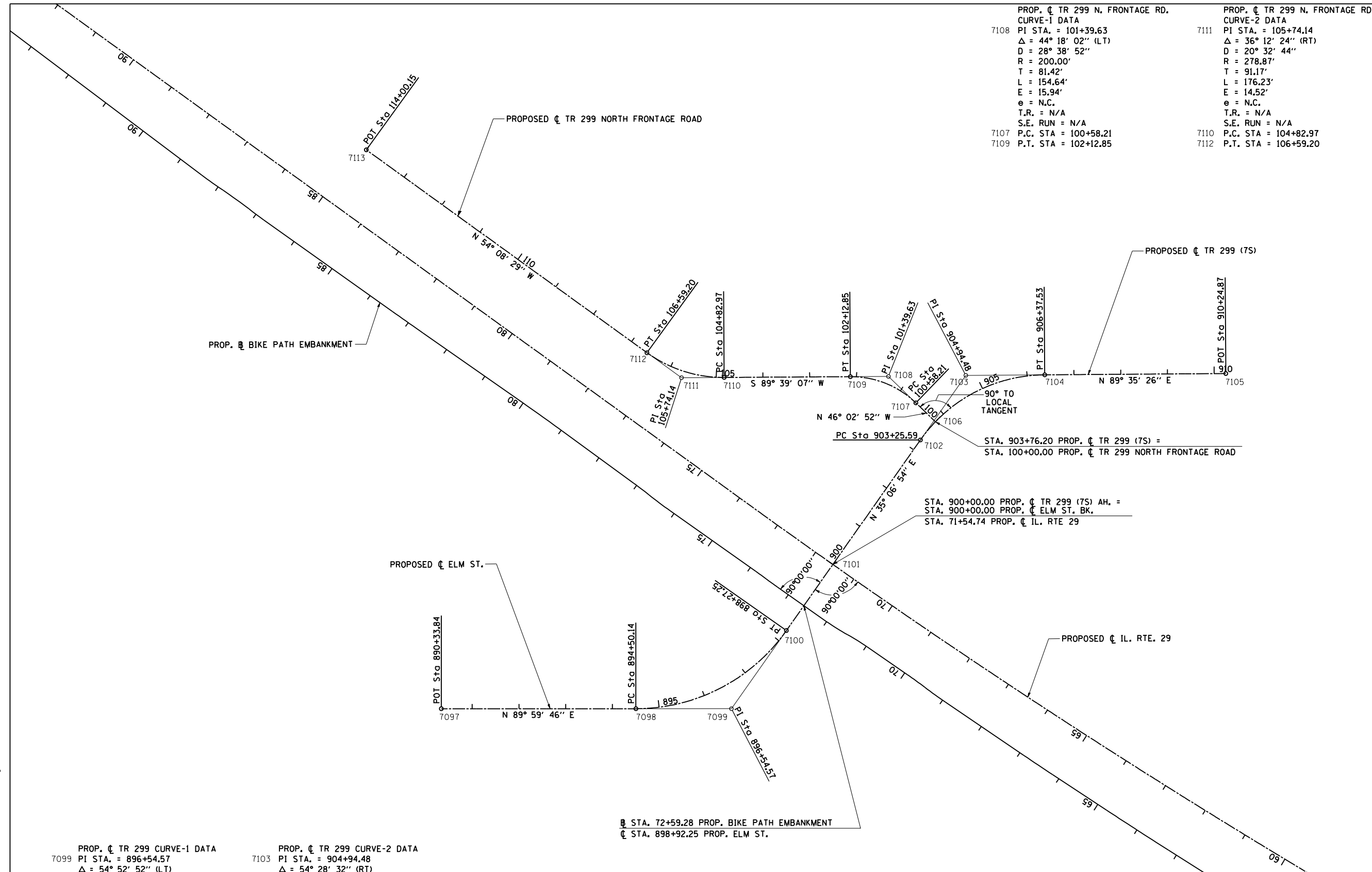


F.A. RTE.	SECTION	COUNTY	TOTAL SHEETS	SHEET NO.
75	84-12; 11-3	•	729	77
STA. N/A		TO STA. N/A		
FED. ROAD DIST. NO. 5 ILLINOIS FED. AID PROJECT				
• SANGAMON AND CHRISTIAN				



PROP. C TR 299 N. FRONTAGE RD.
 CURVE-1 DATA
 7108 PI STA. = 101+39.63
 $\Delta = 44^\circ 18' 02''$ (LT)
 $D = 28^\circ 38' 52''$
 $R = 200.00'$
 $T = 81.42'$
 $L = 154.64'$
 $E = 15.94'$
 $e = N.C.$
 $T.R. = N/A$
 $S.E. RUN = N/A$
 7107 P.C. STA = 100+58.21
 7109 P.T. STA = 102+12.85

PROP. C TR 299 N. FRONTAGE RD.
 CURVE-2 DATA
 7111 PI STA. = 105+74.14
 $\Delta = 36^\circ 12' 24''$ (RT)
 $D = 20^\circ 32' 44''$
 $R = 278.87'$
 $T = 91.17'$
 $L = 176.23'$
 $E = 14.52'$
 $e = N.C.$
 $T.R. = N/A$
 $S.E. RUN = N/A$
 7110 P.C. STA = 104+82.97
 7112 P.T. STA = 106+59.20



7099 PROP. C TR 299 CURVE-1 DATA
 $\Delta = 54^\circ 52' 52''$ (LT)
 $D = 14^\circ 33' 11''$
 $R = 393.70'$
 $T = 204.43'$
 $L = 377.11'$
 $E = 49.91'$
 $e = 4.00\%$
 $T.R. = 37.50'$
 $S.E. RUN = 100.00$
 7098 P.C. STA = 894+50.14
 7100 P.T. STA = 898+27.25

7103 PROP. C TR 299 CURVE-2 DATA
 $\Delta = 54^\circ 28' 32''$ (RT)
 $D = 17^\circ 27' 50''$
 $R = 328.08'$
 $T = 168.89'$
 $L = 311.93'$
 $E = 40.92'$
 $e = 4.00\%$
 $T.R. = 37.50'$
 $S.E. RUN = 100.00$
 7102 P.C. STA = 903+25.59
 7104 P.T. STA = 906+37.53

STA. 72+59.28 PROP. BIKE PATH EMBANKMENT
 STA. 898+92.25 PROP. ELM ST.

REVISIONS	
NAME	DATE

ILLINOIS DEPARTMENT OF TRANSPORTATION

HORIZONTAL CONTROL
 TR 299 (7S) C & TR299 NORTH
 FRONTAGE ROAD C

SCALE: 1" = 100'
 DATE: 03/06/2012

DRAWN BY: R.A.H.
 CHECKED BY: J.M.M.

Default L:\DOT\030601\Draw\Sheets\030601\Draw\72829-sht-ATB-ALC-015.dgn 3/6/2012