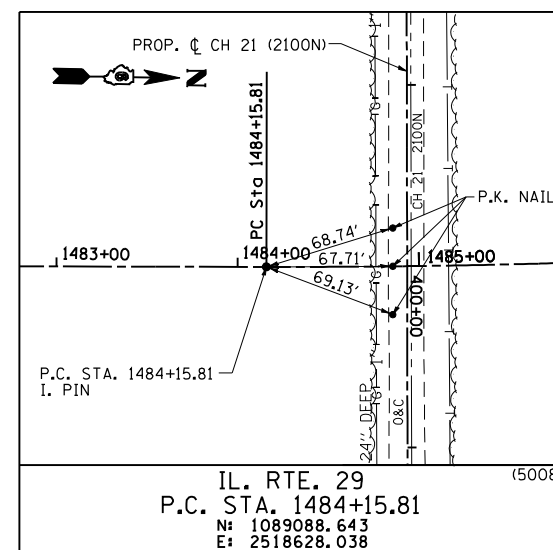
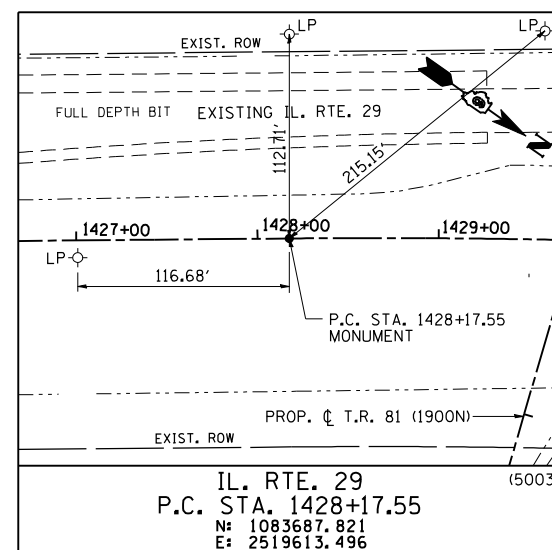
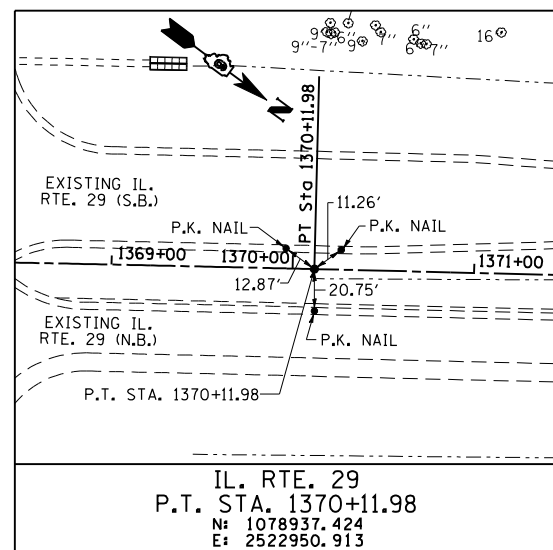
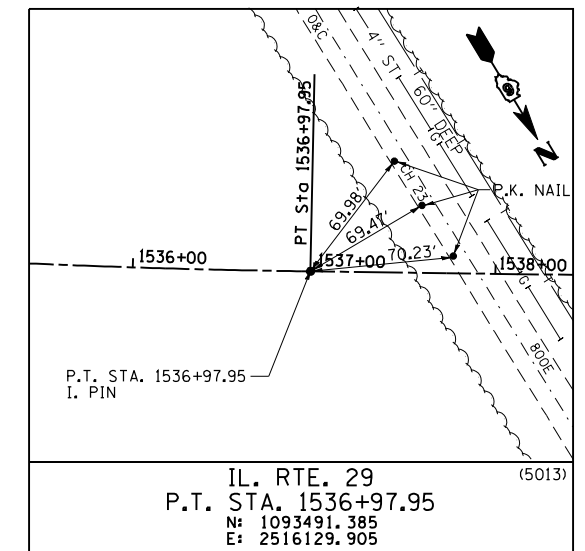
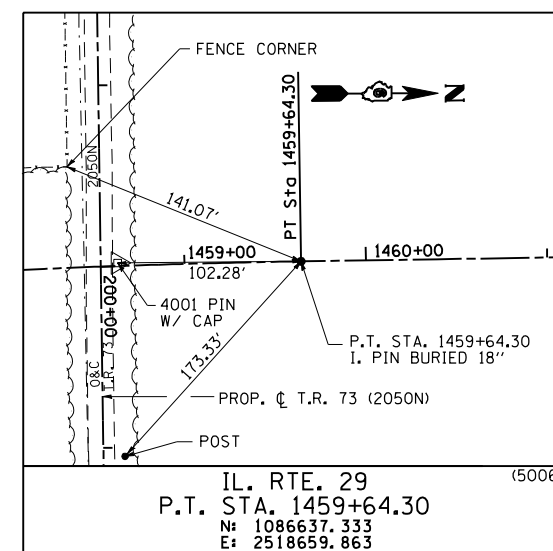
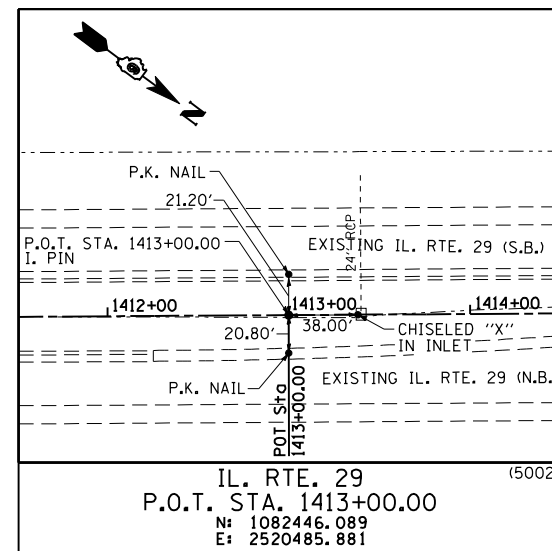
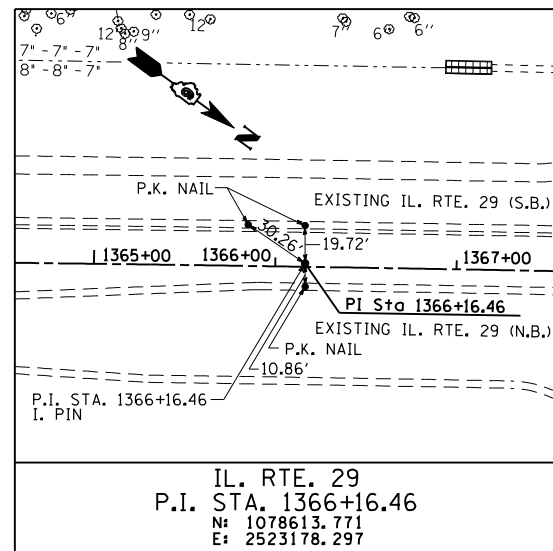
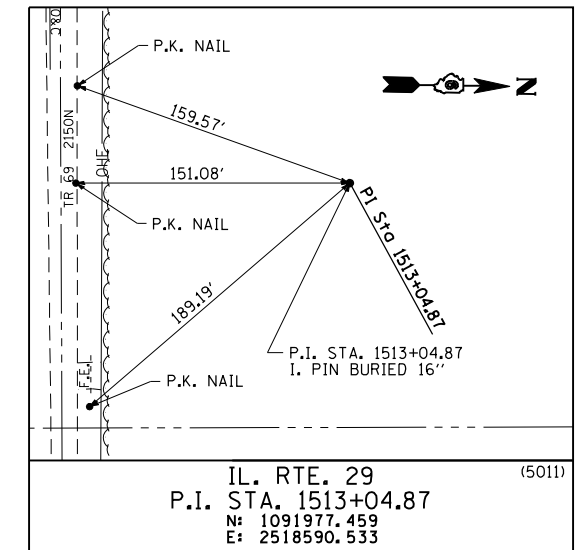
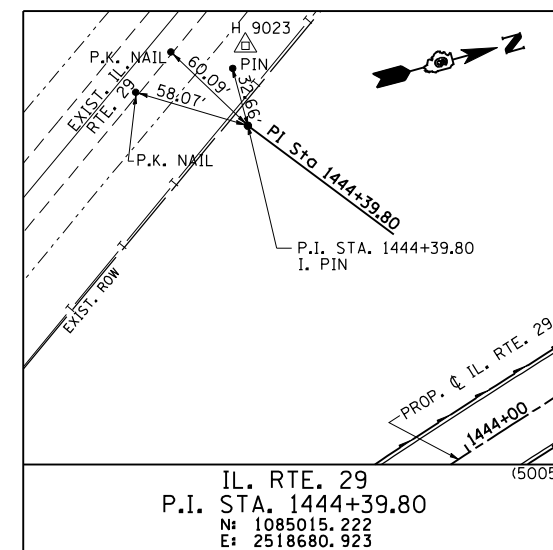
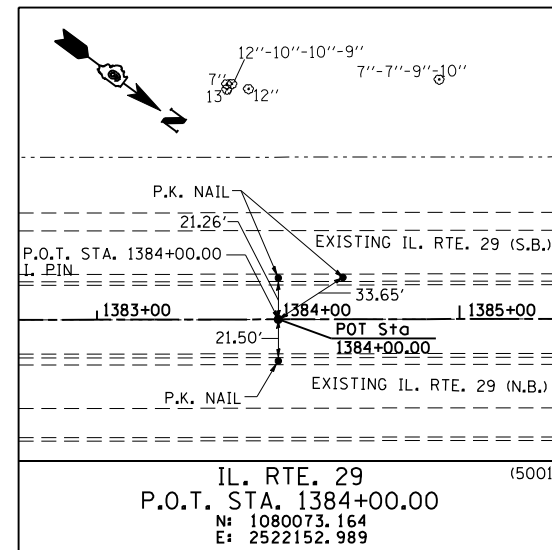
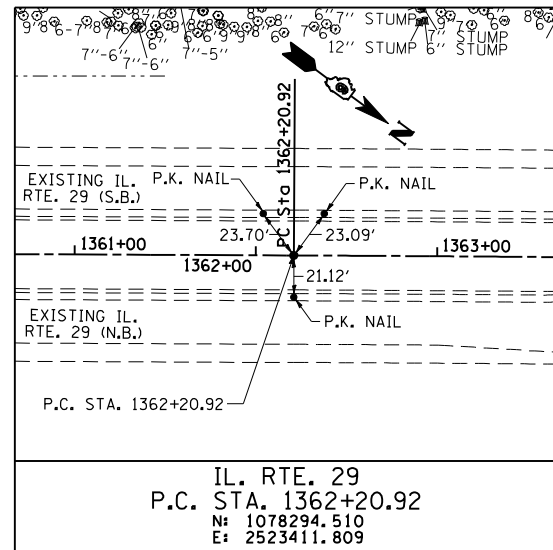


F.A. RTE.	SECTION	COUNTY	TOTAL SHEETS	SHEET NO.
75	84-12; 11-3	•	729	82
STA. N/A		TO STA. N/A		
FED. ROAD DIST. NO. 5 ILLINOIS FED. AID PROJECT				
• SANGAMON AND CHRISTIAN				



COORDINATE TIES

PROP. IL RTE 29 STATION	NORTHING	EASTING
(5004) P. O. C. 1443+00.00	1085004.312	2518942.716
(5007) P. O. T. 1472+00.00	1087872.931	2518643.821
(5009) P. O. C. 1498+00.00	1090454.373	2518428.850
(5010) P. O. C. 1512+00.00	1091734.529	2517872.424
(5012) P. O. C. 1524+00.00	1092682.164	2517140.490
(5014) P. O. T. 1552+00.00	1094278.487	2514850.604
(5015) P. O. T. 1565+00.00	1094959.714	2513743.387
(5016) P. O. T. 1597+00.00	1096636.578	2511017.928

NOTE: POINTS ARE AT LOCATIONS WHERE EXISTING TIE MONUMENTS ARE NOT AVAILABLE FOR REFERENCE.

REVISIONS		ILLINOIS DEPARTMENT OF TRANSPORTATION
NAME	DATE	
		<p>REFERENCE TIES IL. RTE. 29</p> <p>SCALE: NONE DATE: 03/06/2012</p> <p>DRAWN BY: M.V.S. CHECKED BY: J.M.M.</p>