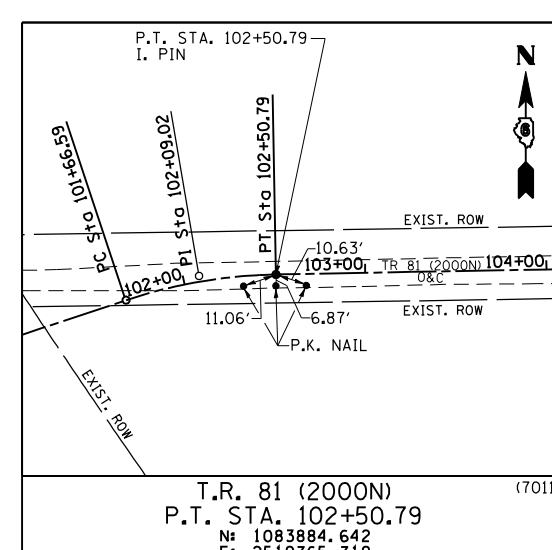
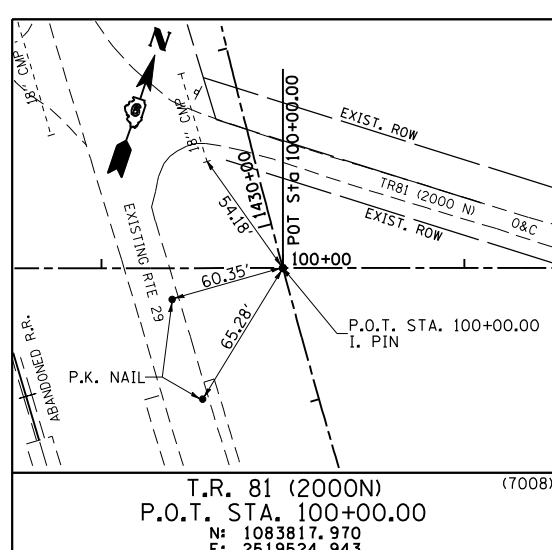
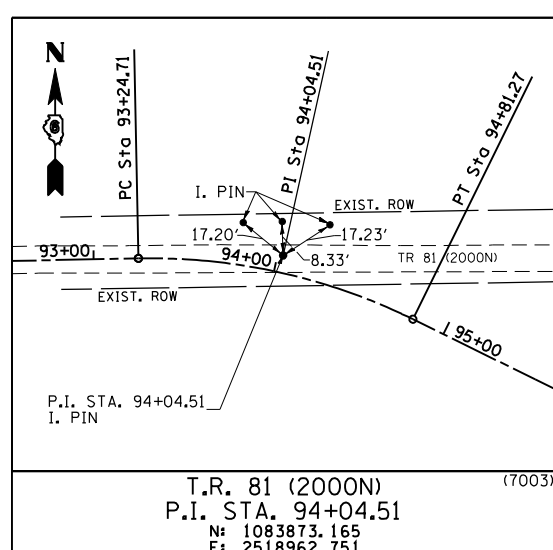
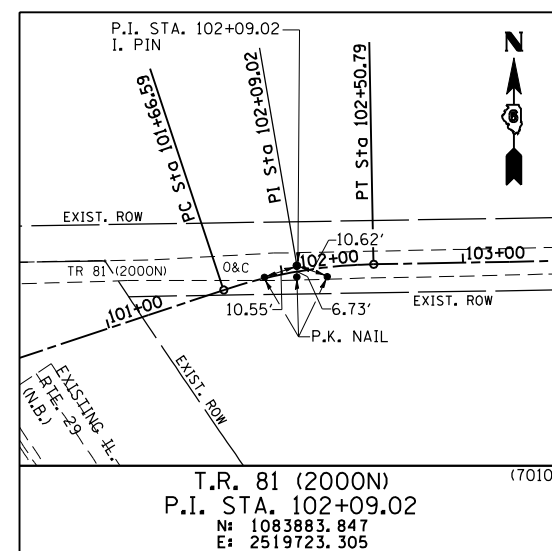
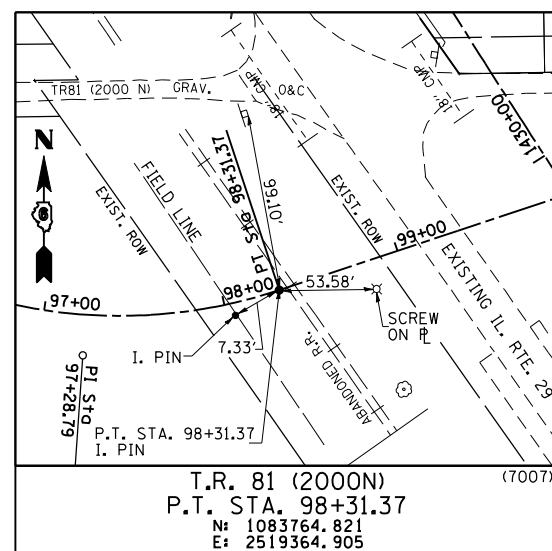
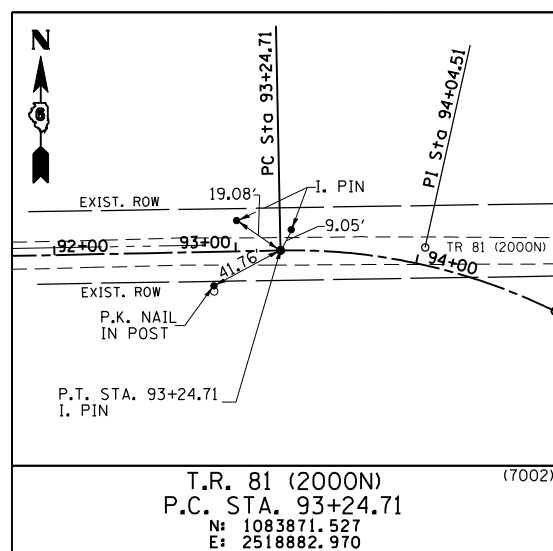
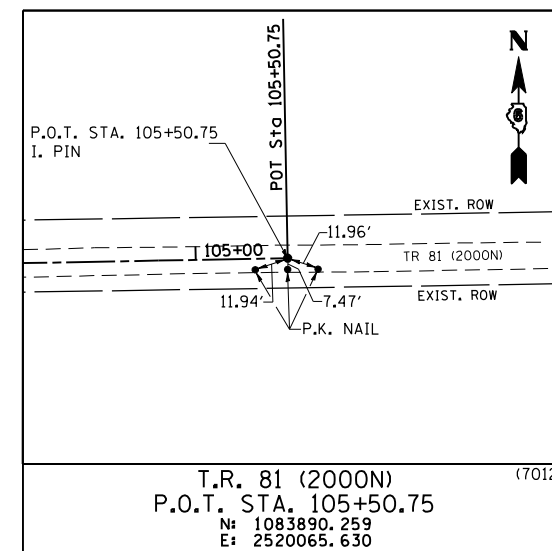
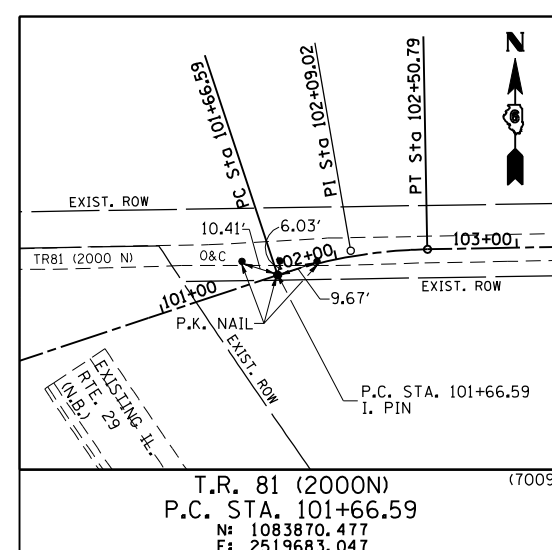
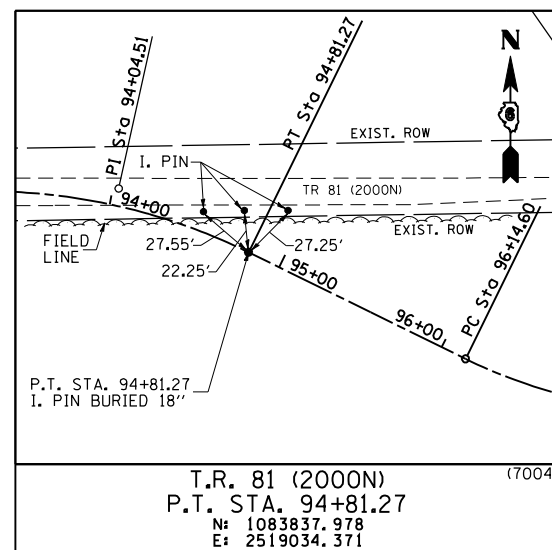
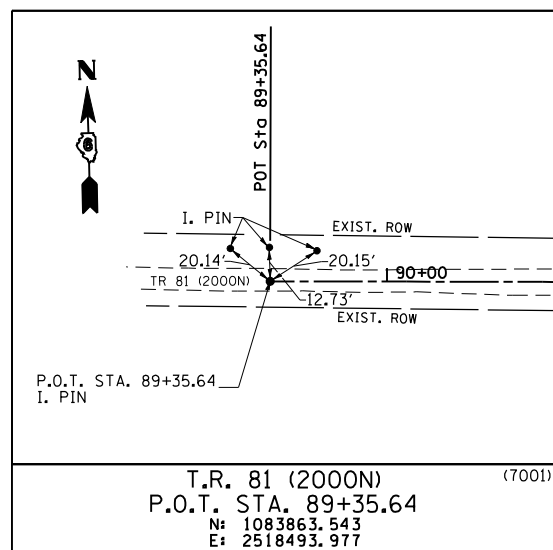


F.A. RTE.	SECTION	COUNTY	TOTAL SHEETS	SHEET NO.
75	84-12; 11-3	•	729	85
STA. N/A		TO STA. N/A		
FED. ROAD DIST. NO. 5 ILLINOIS FED. AID PROJECT				
• SANGAMON AND CHRISTIAN				



COORDINATE TIES

PROP. TR 81 (2000N) STATION	NORTHING	EASTING
(7005) P. C. 96+14.60	1083837.978	2519034.371
(7006) P. I. 97+28.79	1083728.830	2519256.533

NOTE: POINTS ARE AT LOCATIONS WHERE EXISTING TIE MONUMENTS ARE NOT AVAILABLE FOR REFERENCE.

REVISIONS		ILLINOIS DEPARTMENT OF TRANSPORTATION
NAME	DATE	
		<p>REFERENCE TIES T.R. 81 (2000N)</p> <p>SCALE: NONE DATE: 03/06/2012</p> <p>DRAWN BY: M.V.S. CHECKED BY: J.M.M.</p>

REFERENCE TIES: TR 81 (2000N)