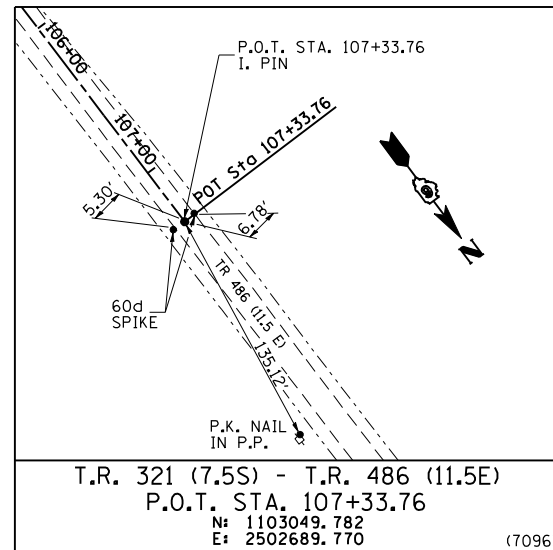
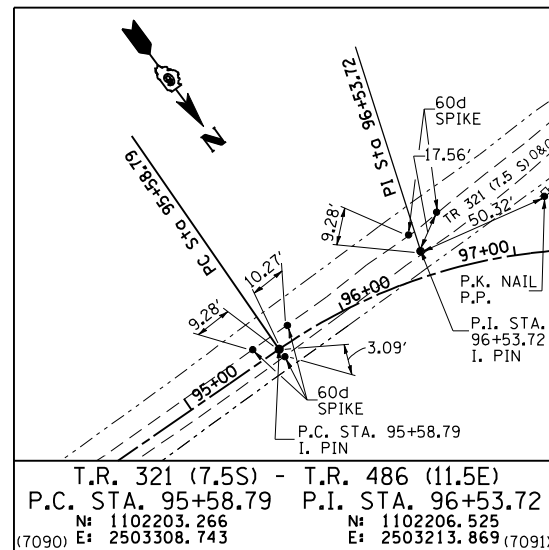
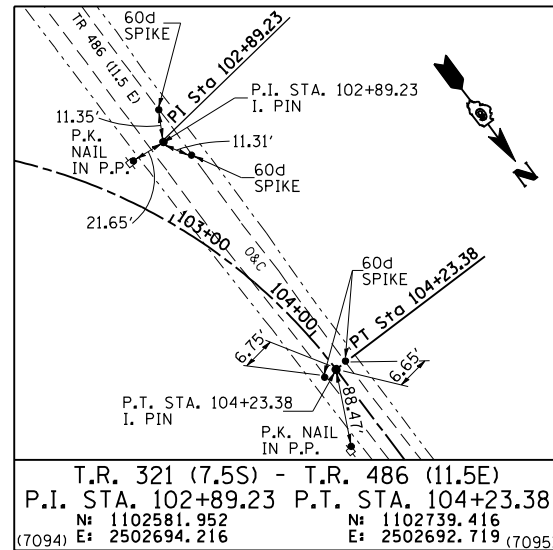
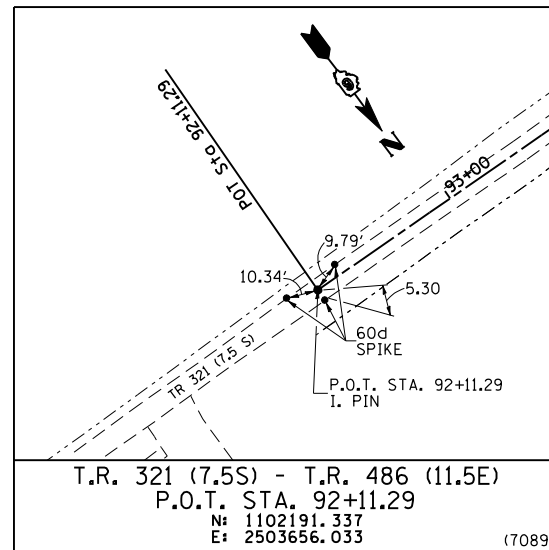
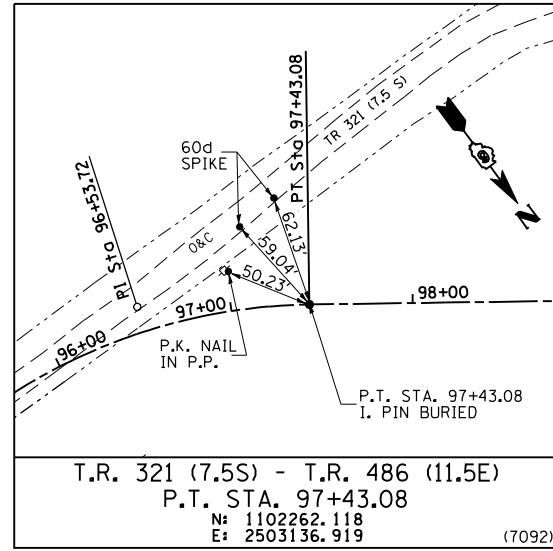
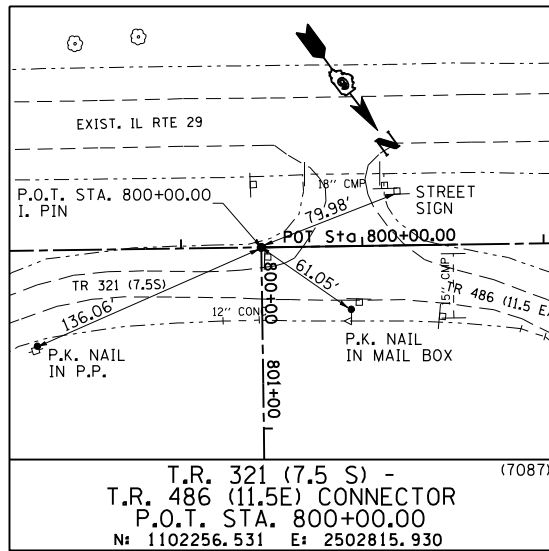


F.A. RTE.	SECTION	COUNTY	TOTAL SHEETS	SHEET NO.
75	84-12; 11-3	•	729	90
STA. N/A		TO STA. N/A		
FED. ROAD DIST. NO. 5 ILLINOIS FED. AID PROJECT				
• SANGAMON AND CHRISTIAN				



COORDINATE TIES

PROP. TR 321 (7.5S) / TR 486 (11.5E)	NORTHING	EASTING
P.O.T. 801+92.50	1102412.573	2502928.664
P.C. 101+31.76	1102489.734	2502821.861

(7088)
(7093)

NOTE: POINTS ARE AT LOCATIONS WHERE EXISTING TIE MONUMENTS ARE NOT AVAILABLE FOR REFERENCE.

REVISIONS		ILLINOIS DEPARTMENT OF TRANSPORTATION
NAME	DATE	
		<p>REFERENCE TIES</p> <p>T.R.321 (7.5S) / T.R. 486 (11.5E) CONNECTOR</p> <p>SCALE: NONE DRAWN BY: M.V.S. DATE: 03/06/2012 CHECKED BY: J.M.M.</p>

REFERENCE TIES: TR 321 (7.5S)-TR 486 (11.5E) CONNECTOR