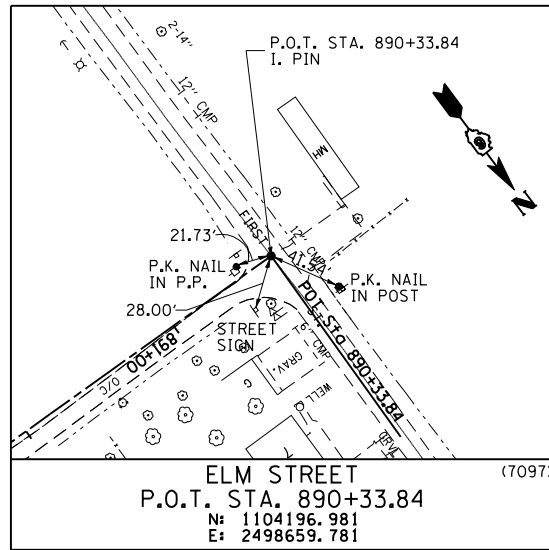
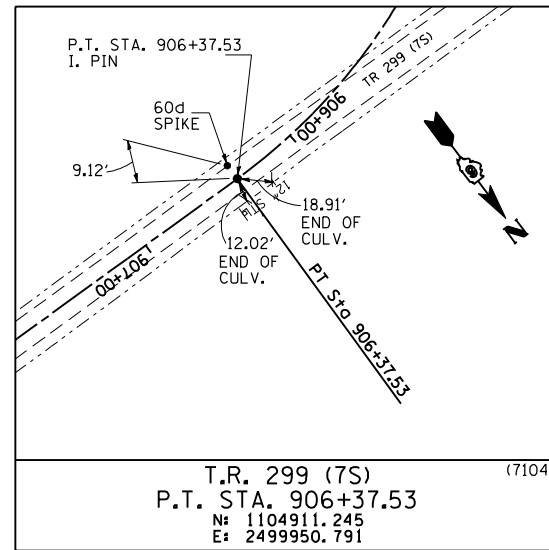


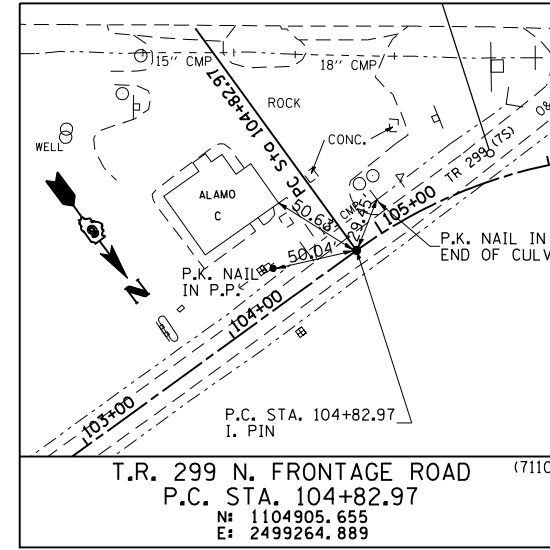
F.A. RTE.	SECTION	COUNTY	TOTAL SHEETS	SHEET NO.
75	84-12; 11-3	•	729	91
STA. N/A		TO STA. N/A		
FED. ROAD DIST. NO. 5 ILLINOIS FED. AID PROJECT				
• SANGAMON AND CHRISTIAN				



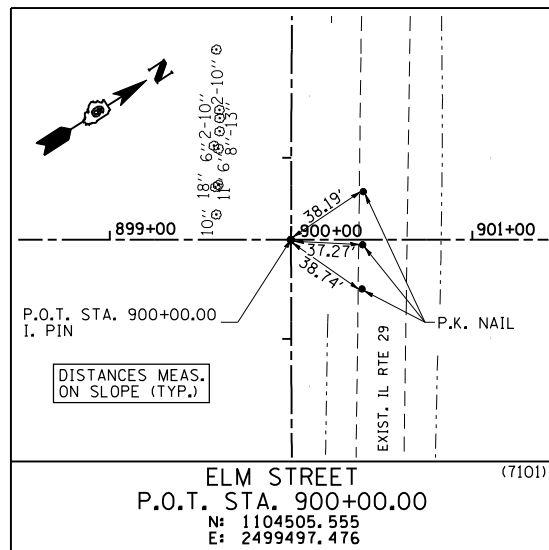
ELM STREET
P.O.T. STA. 890+33.84
N: 1104196.981
E: 2498659.781 (7097)



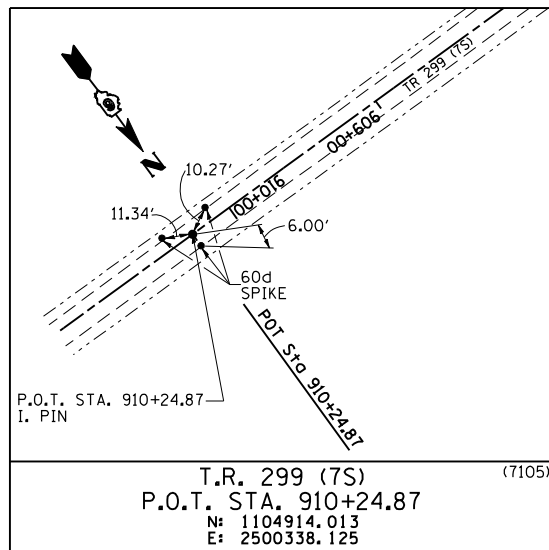
T.R. 299 (7S)
P.T. STA. 906+37.53
N: 1104911.245
E: 2499950.791 (7104)



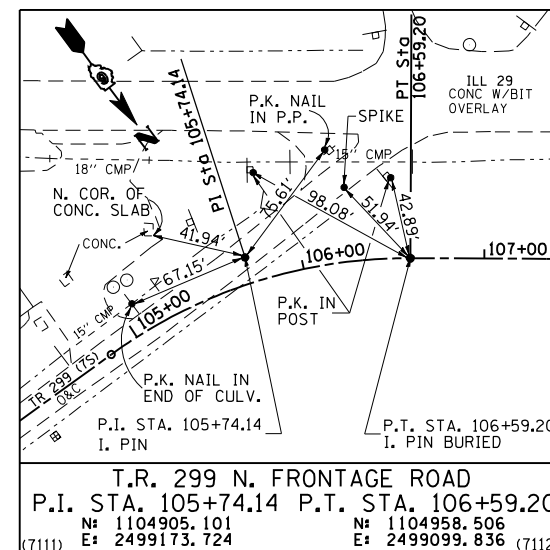
T.R. 299 N. FRONTAGE ROAD
P.C. STA. 104+82.97
N: 1104905.655
E: 2499264.889 (7110)



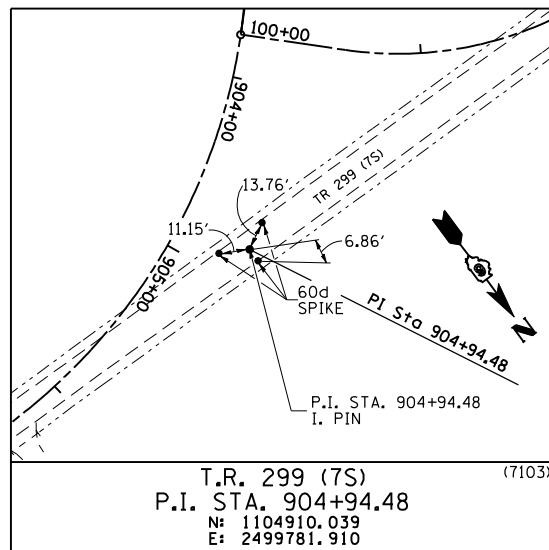
ELM STREET
P.O.T. STA. 900+00.00
N: 1104505.555
E: 2499497.476 (7101)



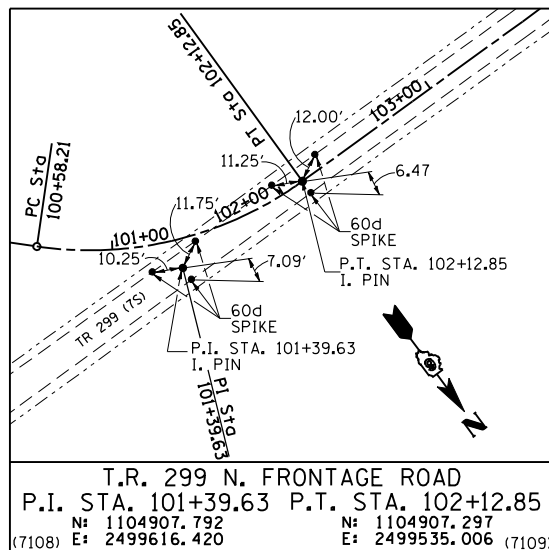
T.R. 299 (7S)
P.O.T. STA. 910+24.87
N: 1104914.013
E: 2500338.125 (7105)



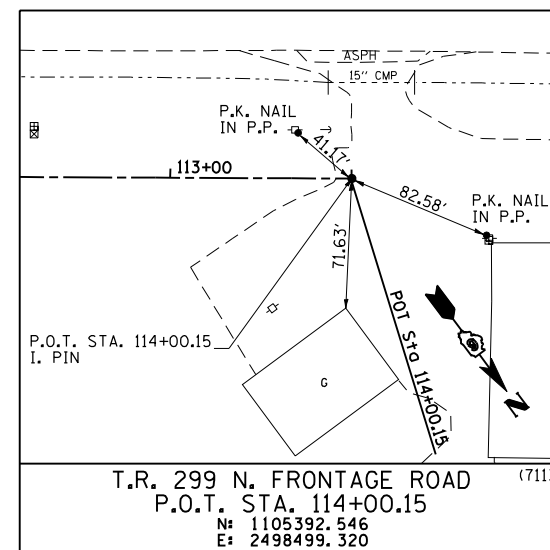
T.R. 299 N. FRONTAGE ROAD
P.I. STA. 105+74.14 P.T. STA. 106+59.20
N: 1104905.101 N: 1104958.506
E: 2499173.724 E: 2499099.836 (7112)



T.R. 299 (7S)
P.I. STA. 904+94.48
N: 1104910.039
E: 2499781.910 (7103)



T.R. 299 N. FRONTAGE ROAD
P.I. STA. 101+39.63 P.T. STA. 102+12.85
N: 1104907.792 N: 1104907.297
E: 2499616.420 E: 2499535.006 (7109)



T.R. 299 N. FRONTAGE ROAD
P.O.T. STA. 114+00.15
N: 1105392.546
E: 2498499.320 (7113)

COORDINATE TIES

PROP. ELM STREET TR 299 (7S) / N FRONTAGE	NORTHING	EASTING
P. C. 894+50.14 ELM	1104197.009	2499076.087
P. I. 896+54.57 ELM	1104197.023	2499280.515
P. T. 898+27.25 ELM	1104364.245	2499398.106
P. C. 903+25.59 TR 299	1104771.890	2499684.764
P. O. T. 100+00.00 FRON.	1104810.880	2499716.943
P. C. 100+58.21 FRON.	1104851.284	2499675.033

DRAINAGE OUTLET #1	NORTHING	EASTING
P. O. T. 100+00.00	1097317.805	2509910.711
P. I. 103+63.81	1097007.946	2509720.067
P. C. 107+03.10	1097000.999	2509380.851
P. I. 107+67.78	1096999.674	2509316.186
P. R. C. 108+29.45	1096966.036	2509260.944
P. I. 108+94.13	1096932.398	2509205.702
P. T. 109+55.81	1096931.074	2509141.038
P. C. 114+69.55	1096920.555	2508627.397
P. I. 116+17.01	1096917.535	2508479.972
P. T. 117+43.66	1096798.966	2508392.310
P. O. T. 117+55.00	1096789.848	2508385.569

DRAINAGE OUTLET #2	NORTHING	EASTING
P. O. T. 0+00.00	1099894.646	2506085.880
P. C. 1+91.42	1100049.860	2506197.906
P. I. 2+19.19	1100072.382	2506214.161
P. T. 2+43.16	1100083.295	2506239.704
P. C. 5+04.65	1100186.026	2506480.163
P. I. 5+28.66	1100195.461	2506502.247
P. T. 5+49.66	1100193.839	2506526.208
P. O. T. 7+14.46	1100182.703	2506690.627

NOTE: POINTS ARE AT LOCATIONS WHERE EXISTING TIE MONUMENTS ARE NOT AVAILABLE FOR REFERENCE.

REVISIONS		ILLINOIS DEPARTMENT OF TRANSPORTATION REFERENCE TIES T.R. 299 (7S) T.R. 299 N. FRONTAGE ROAD DRAINAGE OUTLETS #1, #2 DETENTION AREA A2 CHANNEL SCALE: NONE DATE: 03/06/2012
NAME	DATE	
		DRAWN BY: M.V.S. CHECKED BY: J.M.M.