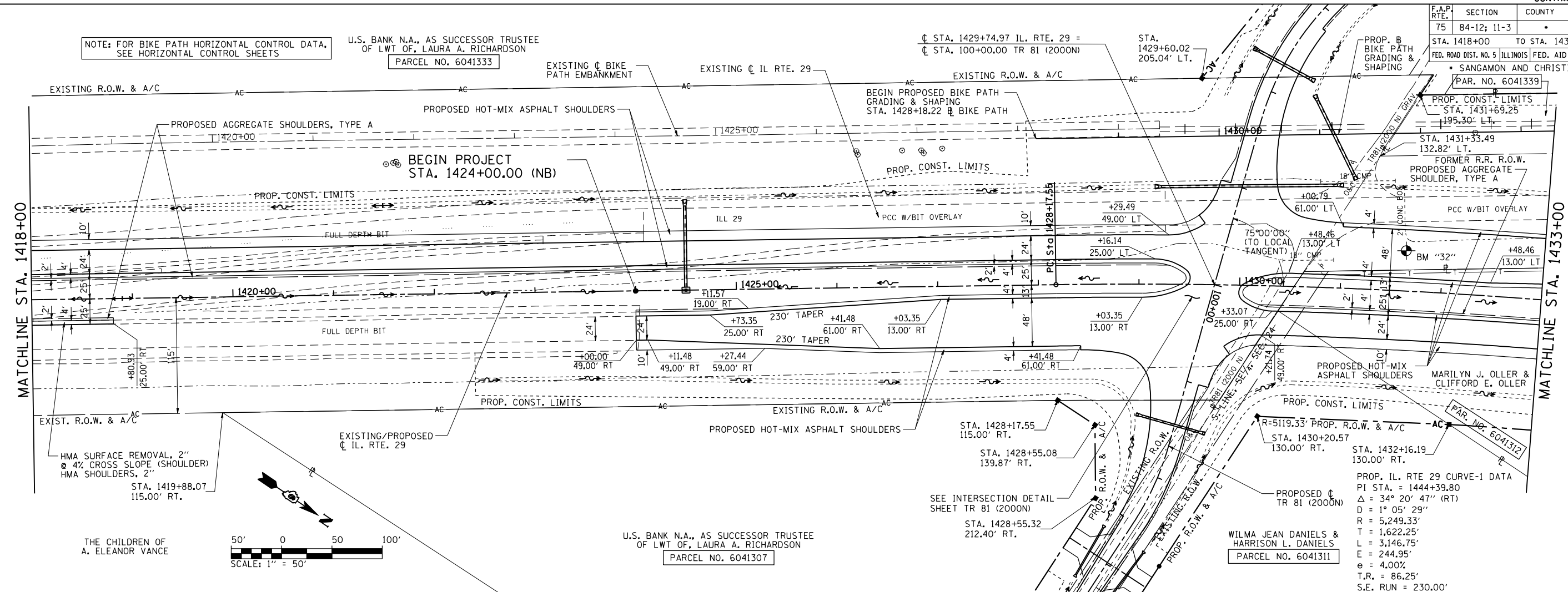


F.A.P. RTE.	SECTION	COUNTY	TOTAL SHEETS	SHEET NO.
75	84-12; 11-3		729	94

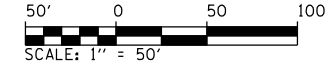
STA. 1418+00 TO STA. 1433+00
 FED. ROAD DIST. NO. 5 (ILLINOIS) FED. AID PROJECT
 SANGAMON AND CHRISTIAN

NOTE: FOR BIKE PATH HORIZONTAL CONTROL DATA, SEE HORIZONTAL CONTROL SHEETS

U.S. BANK N.A., AS SUCCESSOR TRUSTEE OF LWT OF, LAURA A. RICHARDSON
 PARCEL NO. 6041333



THE CHILDREN OF A. ELEANOR VANCE



U.S. BANK N.A., AS SUCCESSOR TRUSTEE OF LWT OF, LAURA A. RICHARDSON
 PARCEL NO. 6041307

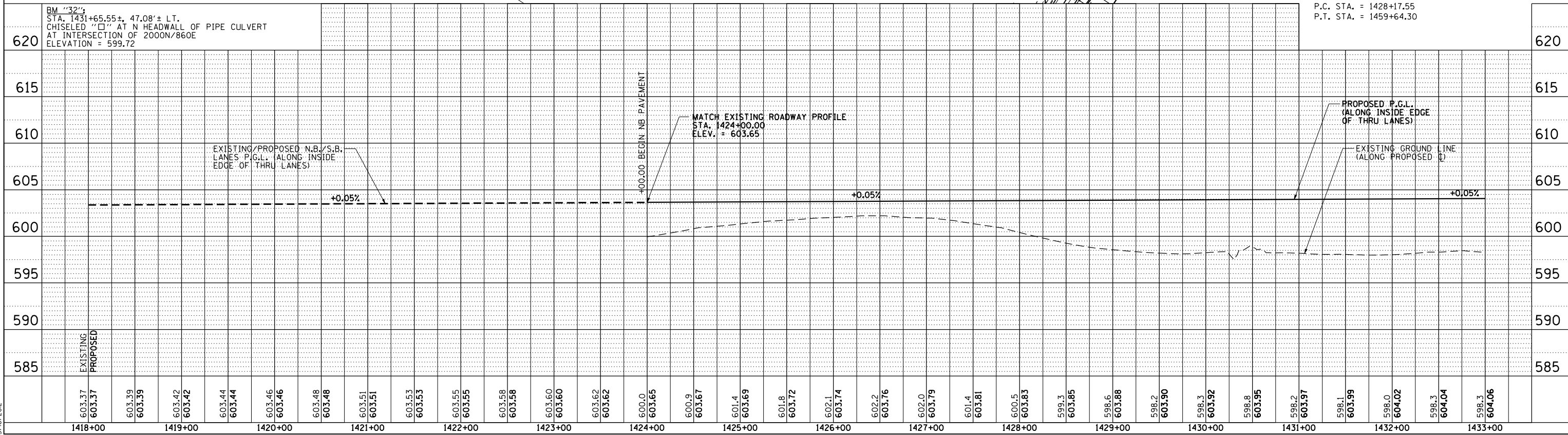
SEE INTERSECTION DETAIL SHEET TR 81 (2000N)
 STA. 1428+55.32
 212.40' RT.

WILMA JEAN DANIELS & HARRISON L. DANIELS
 PARCEL NO. 6041311

PROP. IL RTE 29 CURVE-1 DATA
 PI STA. = 1444+39.80
 $\Delta = 34^\circ 20' 47''$ (RT)
 $D = 1^\circ 05' 29''$
 $R = 5,249.33'$
 $T = 1,622.25'$
 $L = 3,146.75'$
 $E = 244.95'$
 $e = 4.00\%$
 $T.R. = 86.25'$
 $S.E. RUN = 230.00'$
 $P.C. STA. = 1428+17.55$
 $P.T. STA. = 1459+64.30$

PLAN	DATE
BY	
CHECKED	
NO.	

PROFILE	DATE
BY	
CHECKED	
NO.	



PinProfShts03
 L:\DOT\030660\Draw\Sheet\Sheet.s.d672829-sht-PinProfShts03.dgn
 3/16/2012