

F.A.P. RTE.	SECTION	COUNTY	TOTAL SHEETS	SHEET NO.
75	84-12-11-3		729	98

STA. 1477+50 TO STA. 1492+50  
FED. ROAD DIST. NO. 5 (ILLINOIS) FED. AID PROJECT

GANGAMON AND CHRISTIAN

PROP. IL. RTE 29 CURVE-2 DATA  
 PI STA. = 1513+04.87  
 $\Delta = 57^{\circ}39'14''$  (LT)  
 $D = 1^{\circ}05'29''$   
 $R = 5,249.33'$   
 $L = 2,889.06'$   
 $E = 5,282.14'$   
 $e = 742.51'$   
 $e = 4.00\%$   
 $T.R. = 86.25'$   
 $S.E. RUN = 230.00'$   
 $P.C. STA. = 1484+15.81$   
 $P.T. STA. = 1536+97.95$



BROCKLESBY FARMS, L.P., AN ILLINOIS LIMITED PARTNERSHIP  
 PARCEL NO. 6041322

BROCKLESBY FARMS, L.P., AN ILLINOIS LIMITED PARTNERSHIP  
 PARCEL NO. 6041322

PLAN

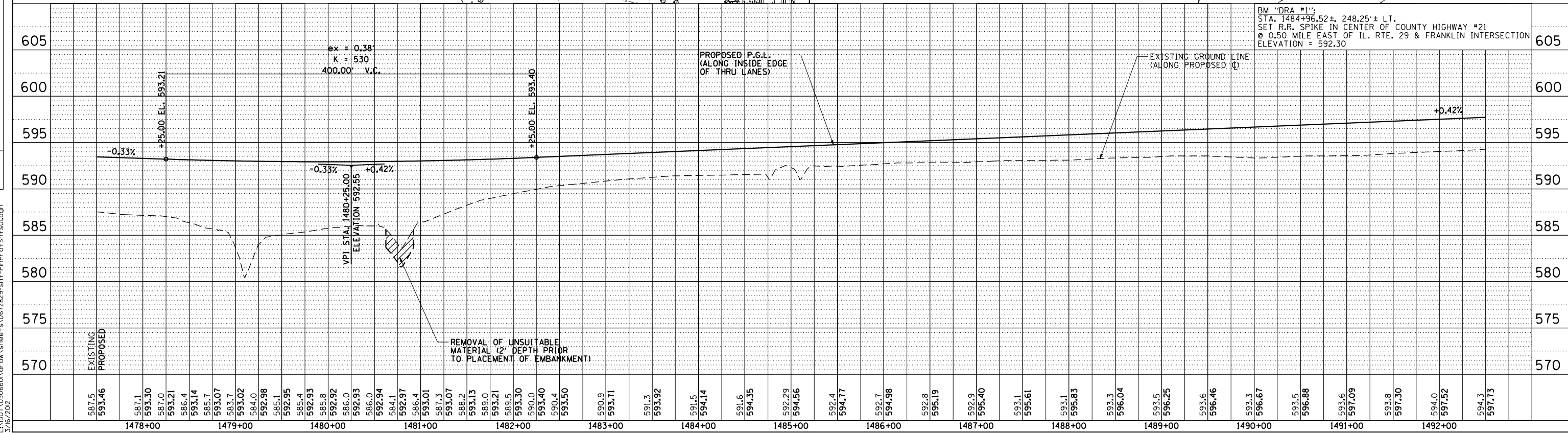
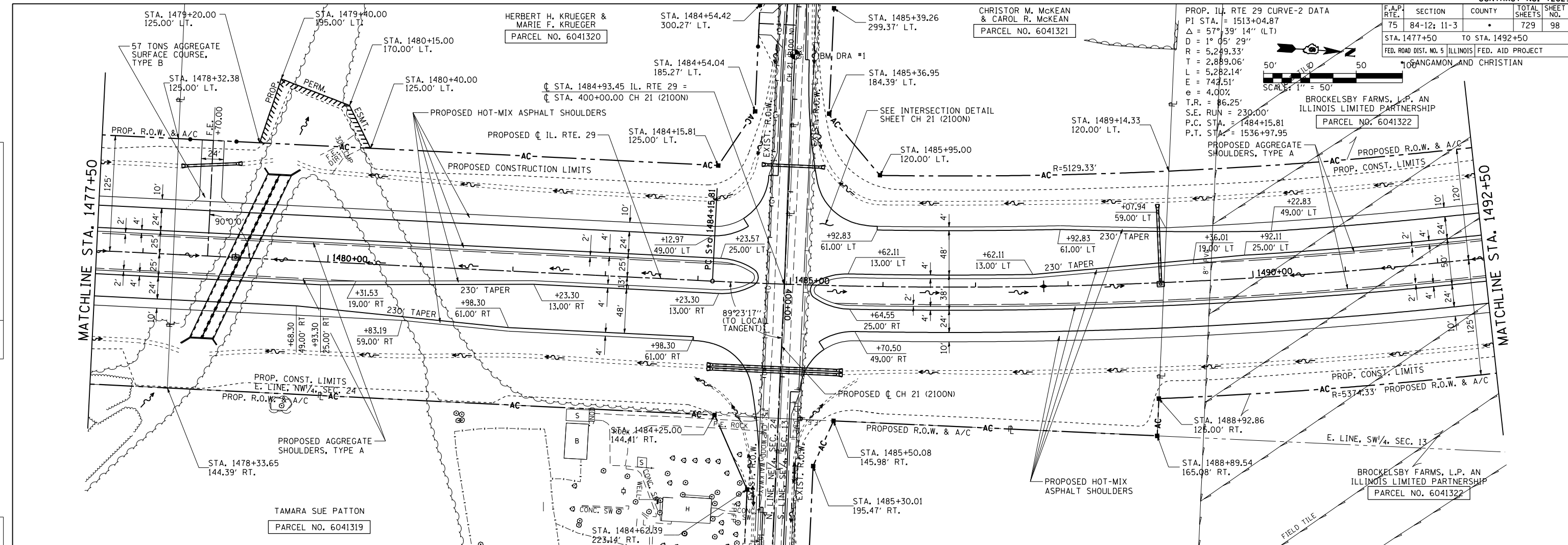
DATE	BY

SURVEYED  
 PLOTTED  
 CHECKED  
 NOTE BOOK NO. \_\_\_\_\_  
 RT. OF WAY CHECKED  
 CAD FILE NAME \_\_\_\_\_

PROFILE

DATE	BY

SURVEYED  
 PLOTTED  
 CHECKED  
 NOTE BOOK NO. \_\_\_\_\_  
 STRUCTURE NOTATIONS CHRD



PLAN & PROFILE: IL. RTE 29 - STA. 1478+00 TO STA. 1493+00

PINPROF5HTS07  
 L:\DOT\0306601\draw\sheet.s\672829-sht-PlanProf5hts04.dgn  
 3/16/2012