

F.A.P. RTE.	SECTION	COUNTY	TOTAL SHEETS	SHEET NO.
75	84-12; 11-3	•	729	101
STA. 1523+00		TO STA. 1538+00		
FED. ROAD DIST. NO. 5 ILLINOIS FED. AID PROJECT				
• SANGAMON AND CHRISTIAN				

BARBARA L. HART, MOLLIE CHRISTINE CARY AND DOROTHY JEAN BRICKEY  
 PARCEL NO. 6041327

PROP. IL. RTE 29 CURVE-2 DATA  
 PI STA. = 1513+04.87  
 $\Delta = 57^\circ 39' 14''$  (LT)  
 $D = 1^\circ 05' 29''$   
 $R = 5,249.33'$   
 $T = 2,889.06'$   
 $L = 5,282.14'$   
 $E = 742.51'$   
 $e = 4.00\%$   
 $T.R. = 86.25'$   
 $S.E. RUN = 230.00'$   
 $P.C. STA. = 1484+15.81$   
 $P.T. STA. = 1536+97.95$

MELANIE GREEN  
 PARCEL NO. 6041328

EXISTING CH 23 (800E)

STA. 1537+14.64  
 120.00' LT.  
 STA. 1536+95.03  
 120.00' LT.

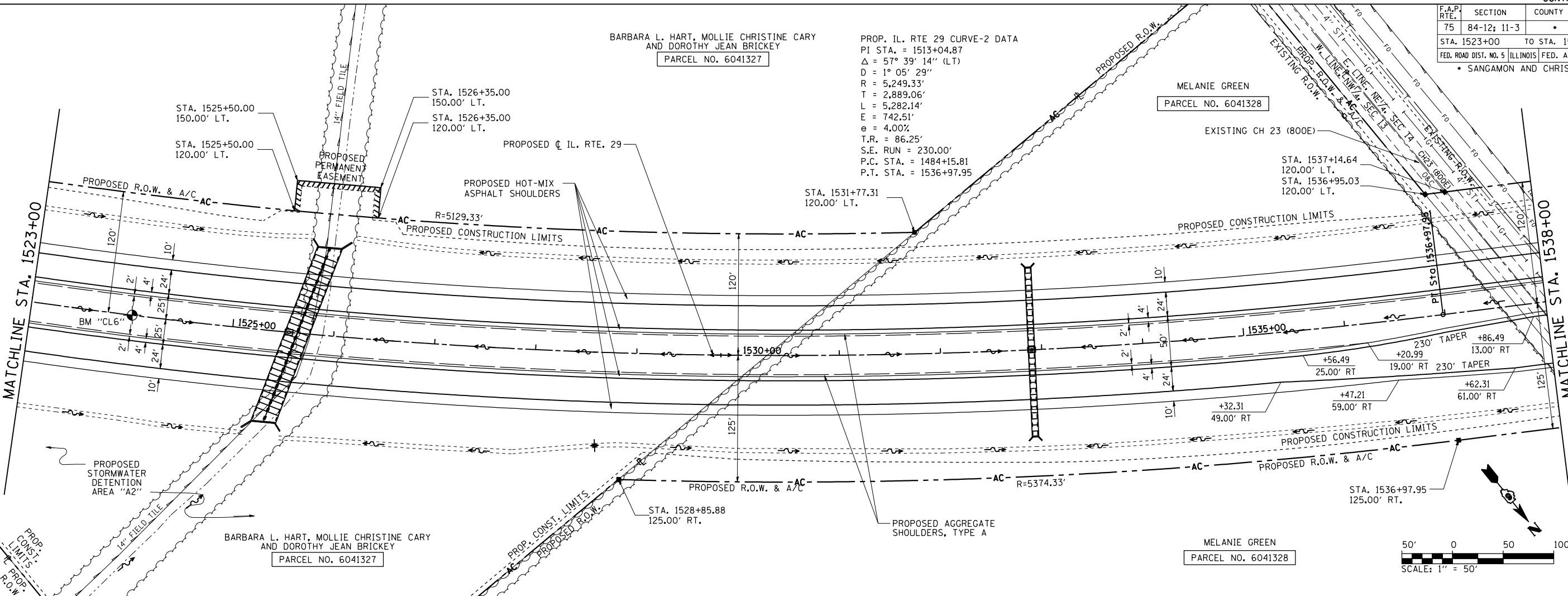
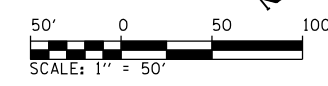
STA. 1531+77.31  
 120.00' LT.

230' TAPER +86.49  
 13.00' RT  
 +56.49  
 25.00' RT  
 +20.99  
 19.00' RT  
 +47.21  
 59.00' RT  
 +62.31  
 61.00' RT

STA. 1528+85.88  
 125.00' RT.

STA. 1536+97.95  
 125.00' RT.

MELANIE GREEN  
 PARCEL NO. 6041328



PLAN	SURVEYED	BY	DATE
	PLotted		
	Checked		
	RT. OF WAY		
	NO. _____		

PROFILE	SURVEYED	BY	DATE
	Plotted		
	Checked		
	STRUCTURE		
	NO. _____		

PinProfShts010  
 L:\DOT\030660\Draw Sheets\672829-sht-PinProfShts010.dgn  
 3/16/2012

