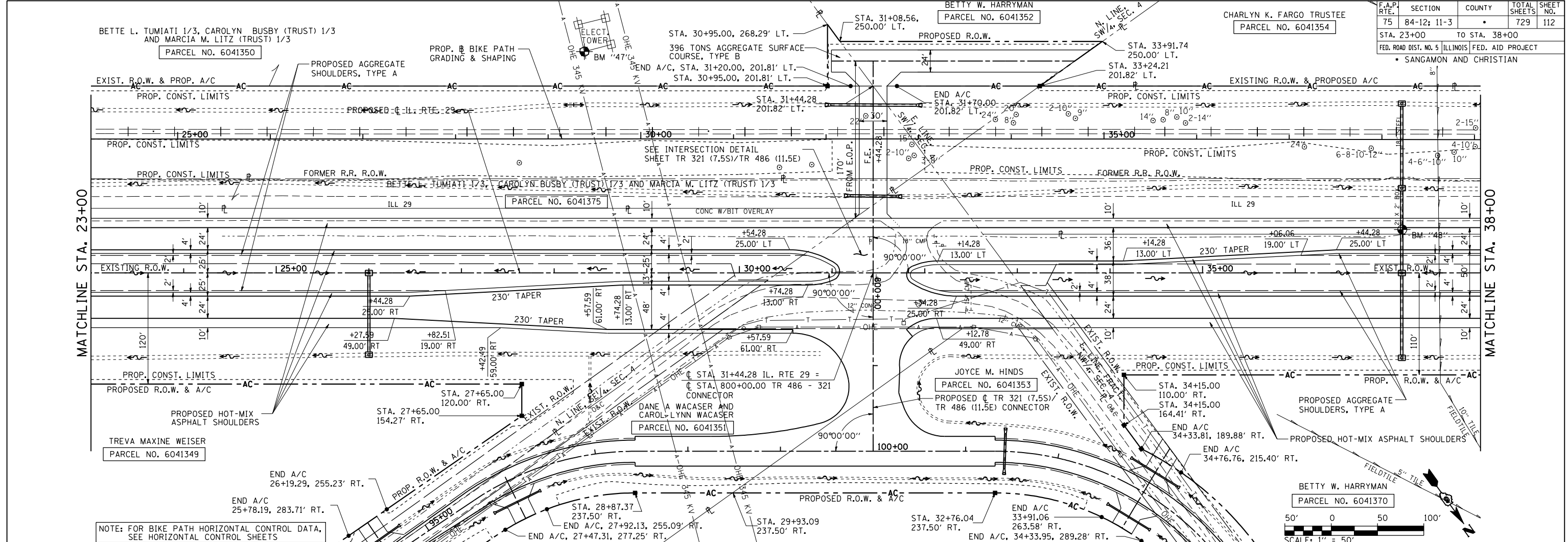


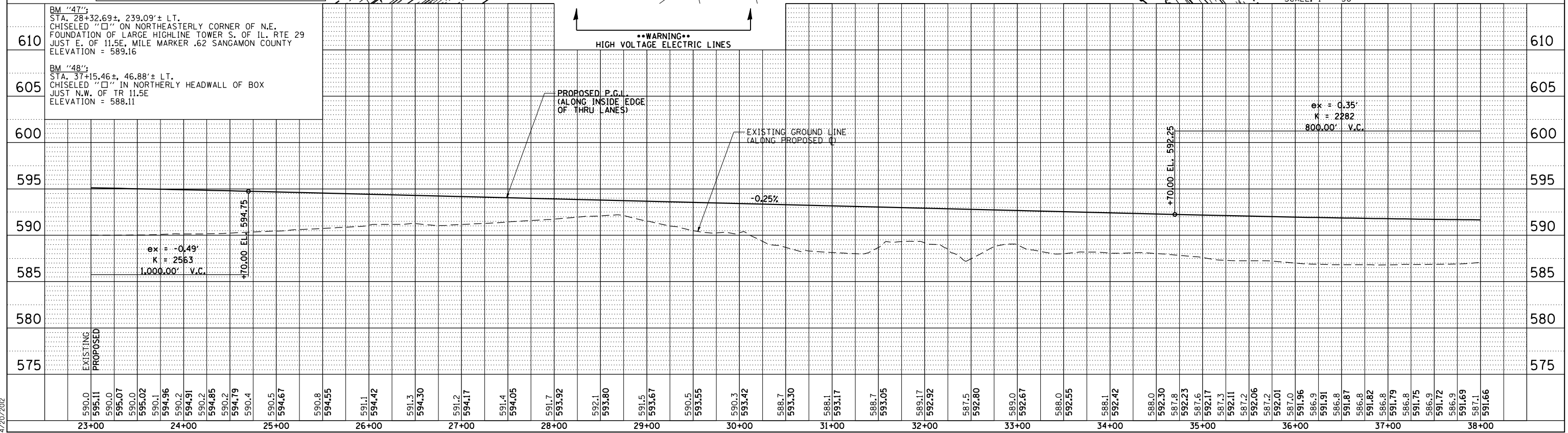
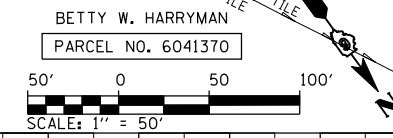
F.A.P. RTE.	SECTION	COUNTY	TOTAL SHEETS	SHEET NO.
75	84-12-11-3		729	112
STA. 23+00		TO STA. 38+00		
FED. ROAD DIST. NO. 5 (ILLINOIS) FED. AID PROJECT				
SANGAMON AND CHRISTIAN				

PLAN	SURVEYED	DATE
	NOT CHECKED	
	BY	
	NO.	

PROFILE	SURVEYED	DATE
	NOT CHECKED	
	BY	
	NO.	



NOTE: FOR BIKE PATH HORIZONTAL CONTROL DATA, SEE HORIZONTAL CONTROL SHEETS



PLAN & PROFILE: IL. RTE 29 - STA. 23+00 TO STA. 38+00

PinProfShts021  
L:\DOT\030660\Draw\Sheet\Draw\Sheet.s.d672829-sht-PinProfShts021.dgn  
4/20/2012