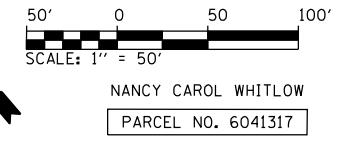


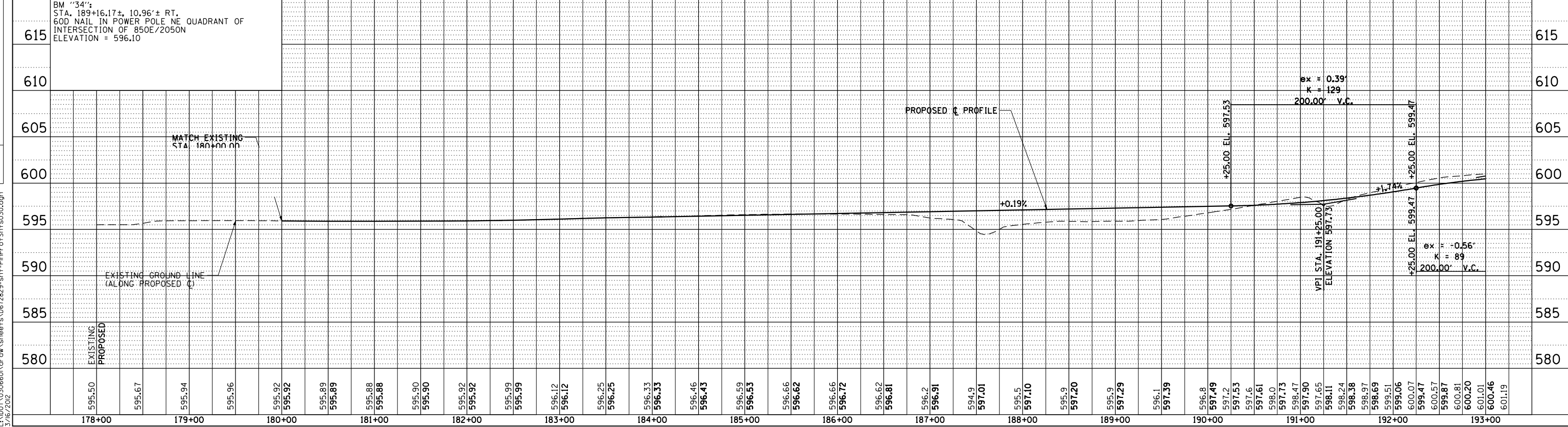
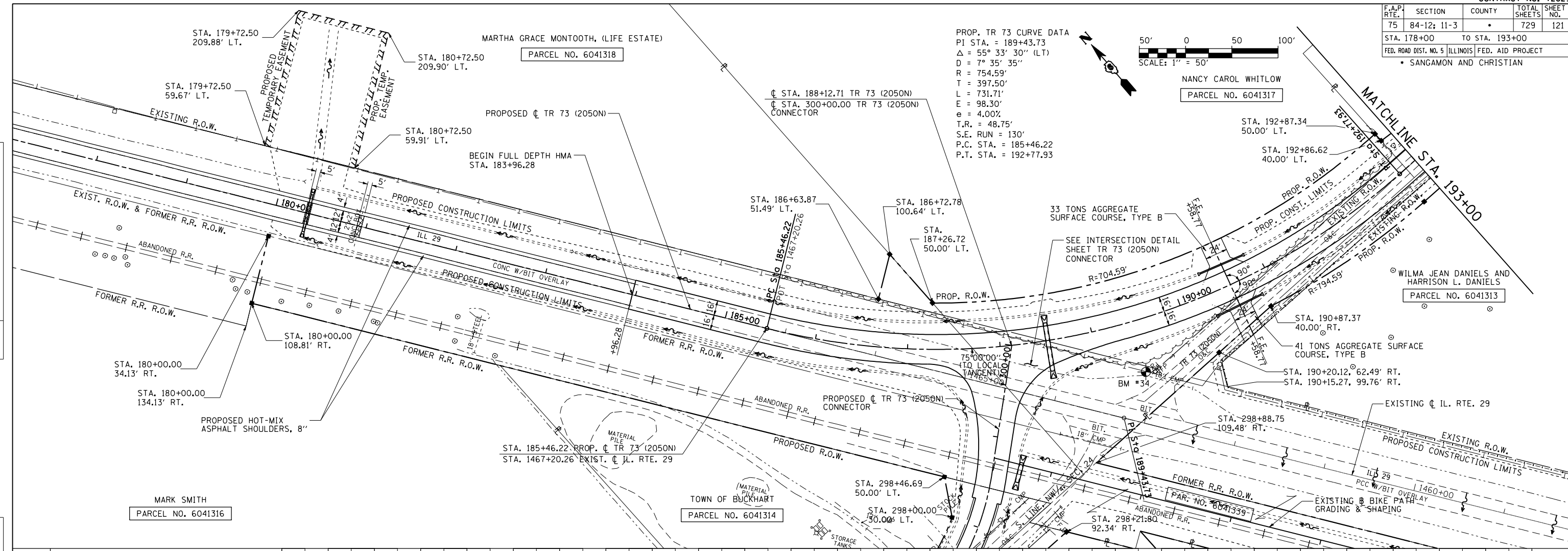
F.A.P. RTE.	SECTION	COUNTY	TOTAL SHEETS	SHEET NO.
75	84-12; 11-3	•	729	121
STA. 178+00		TO STA. 193+00		
FED. ROAD DIST. NO. 5 ILLINOIS FED. AID PROJECT				
• SANGAMON AND CHRISTIAN				

PROP. TR 73 CURVE DATA
 PI STA. = 189+43.73
 $\Delta = 55^\circ 33' 30''$ (LT)
 $D = 7^\circ 35' 35''$
 $R = 754.59'$
 $T = 397.50'$
 $L = 731.71'$
 $E = 98.30'$
 $e = 4.00\%$
 $T.R. = 48.75'$
 $S.E. RUN = 130'$
 $P.C. STA. = 185+46.22$
 $P.T. STA. = 192+77.93$



PLAN	SURVEYED	BY	DATE
	PLOTTED		
	CHECKED		
	BY		
	NO.		

PROFILE	SURVEYED	BY	DATE
	PLOTTED		
	CHECKED		
	BY		
	NO.		



PinPrOfShts032
 L:\DOT\30306001\dr\ow\sheet.s\672829-sht-PinPrOfShts030.dgn
 3/16/2012

PLAN & PROFILE: TR 73 (2050N) - STA. 178+00 TO STA. 193+00