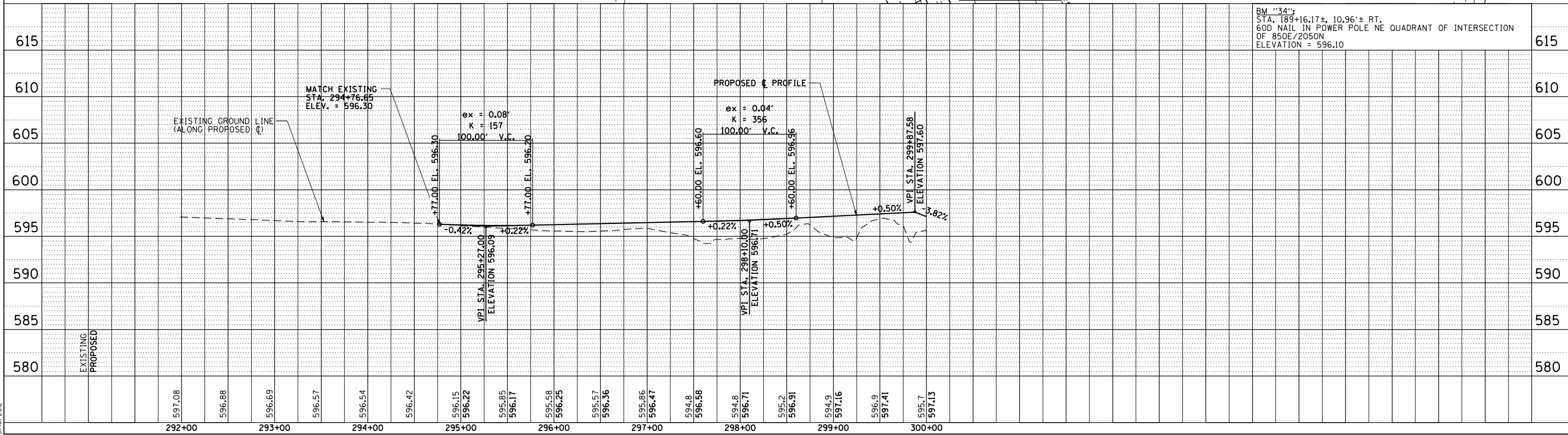
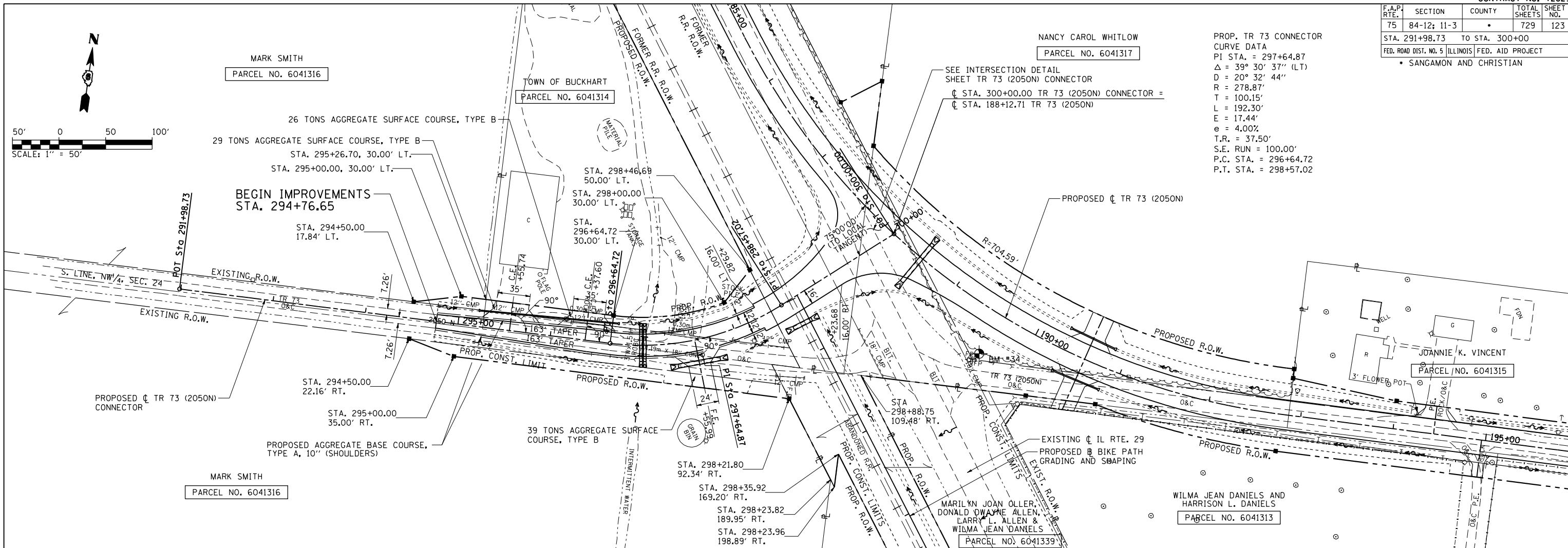


F.A.P. RTE.	SECTION	COUNTY	TOTAL SHEETS	SHEET NO.
75	84-12; 11-3	•	729	123

STA. 291+98.73 TO STA. 300+00
 FED. ROAD DIST. NO. 5 ILLINOIS FED. AID PROJECT
 • SANGAMON AND CHRISTIAN

PROP. TR 73 CONNECTOR
 CURVE DATA
 PI STA. = 297+64.87
 $\Delta = 39^\circ 30' 37''$ (LT)
 $D = 20^\circ 32' 44''$
 $R = 278.87'$
 $T = 100.15'$
 $L = 192.30'$
 $E = 17.44'$
 $e = 4.00\%$
 $T.R. = 37.50'$
 $S.E. RUN = 100.00'$
 $P.C. STA. = 296+64.72$
 $P.T. STA. = 298+57.02$



PLAN

DATE	BY

SURVEYED
 PLOTTED
 CHECKED
 RT. OF WAY CHECKED
 CAD FILE NAME NO.

PROFILE

DATE	BY

SURVEYED
 PLOTTED
 CHECKED
 B.M. NOTED
 STRUCTURE NOTATIONS CHKD
 NO.

PinPrOfShts034
 L:\DOT\0306601\dr-aw\sheet.s\672829-sht-PinPrOfShts030.dgn
 3/16/2012