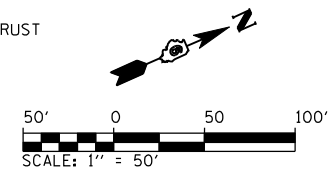
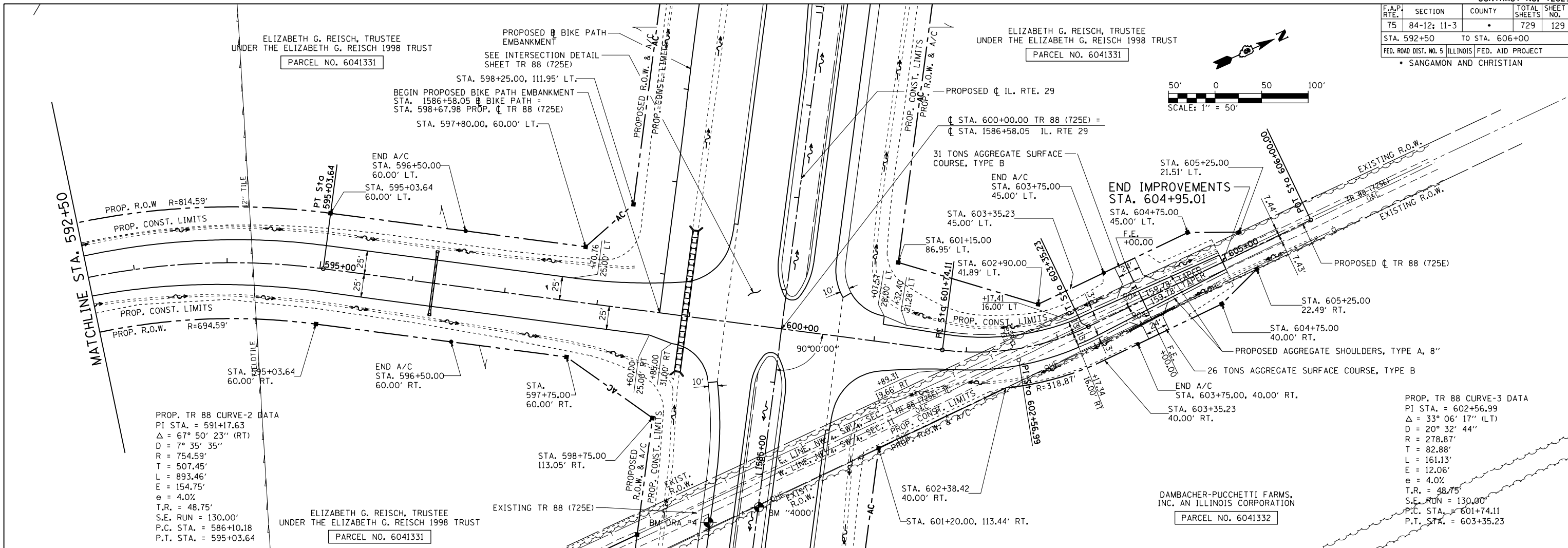


F.A.P. RTE.	SECTION	COUNTY	TOTAL SHEETS	SHEET NO.
75	84-12: 11-3	•	729	129
STA. 592+50 TO STA. 606+00				
FED. ROAD DIST. NO. 5 ILLINOIS FED. AID PROJECT				
• SANGAMON AND CHRISTIAN				



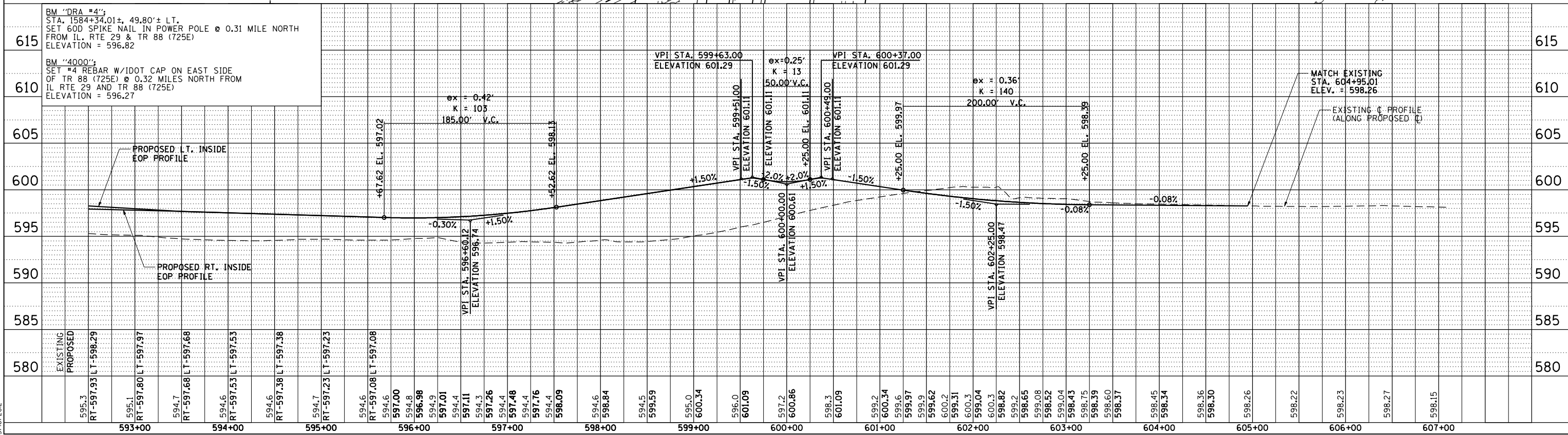
PLAN	DATE
BY	
REVISIONS	
NO.	DESCRIPTION

PROFILE	DATE
BY	
REVISIONS	
NO.	DESCRIPTION



PROP. TR 88 CURVE-2 DATA
 PI STA. = 591+17.63
 $\Delta = 67^\circ 50' 23''$ (RT)
 $D = 7^\circ 35' 35''$
 $R = 754.59'$
 $T = 507.45'$
 $L = 893.46'$
 $E = 154.75'$
 $e = 4.0\%$
 $T.R. = 48.75'$
 $S.E. RUN = 130.00'$
 $P.C. STA. = 586+10.18$
 $P.T. STA. = 595+03.64$

PROP. TR 88 CURVE-3 DATA
 PI STA. = 602+56.99
 $\Delta = 33^\circ 06' 17''$ (LT)
 $D = 20^\circ 32' 44''$
 $R = 278.87'$
 $T = 82.88'$
 $L = 161.13'$
 $E = 12.06'$
 $e = 4.0\%$
 $T.R. = 48.75'$
 $S.E. RUN = 130.00'$
 $P.C. STA. = 601+74.11$
 $P.T. STA. = 603+35.23$



PinPrjofShts040
 L:\DOT\303660\Draw\Sheet\84-12\829-sht-PinPrjofShts030.dgn
 3/16/2012