

F.A.P. RTE.	SECTION	COUNTY	TOTAL SHEETS	SHEET NO.
75	84-12: 11-3		729	137

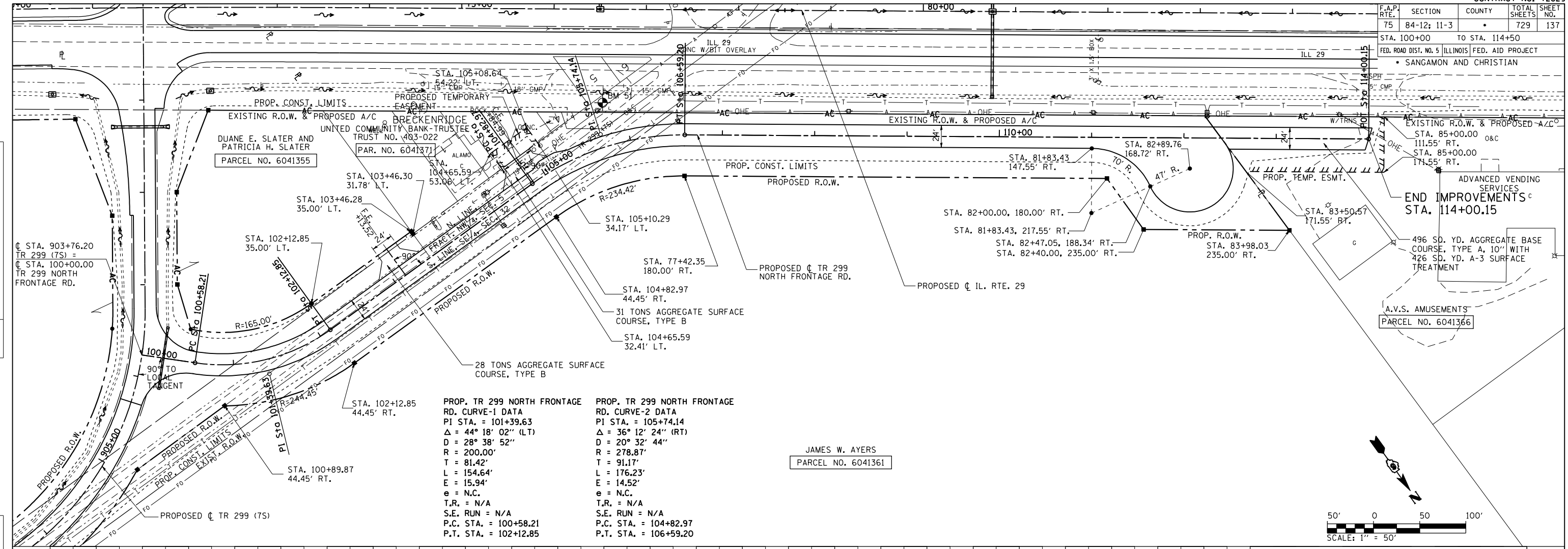
STA. 100+00 TO STA. 114+50
 FED. ROAD DIST. NO. 5 ILLINOIS FED. AID PROJECT
 SANGAMON AND CHRISTIAN

PLAN

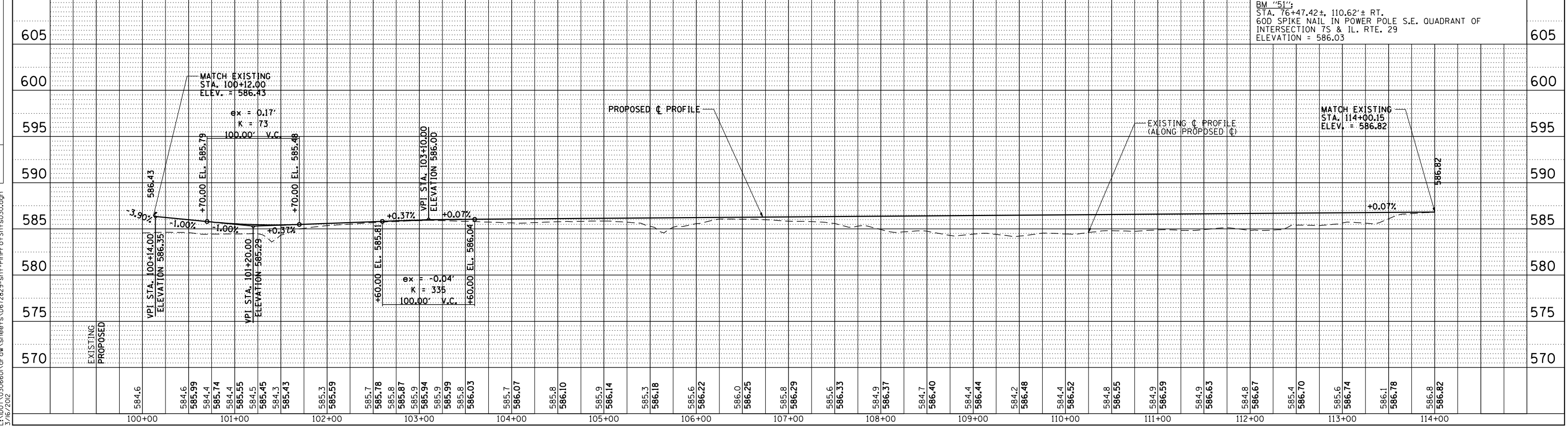
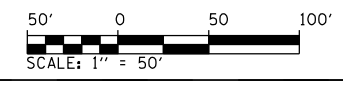
DATE	
BY	
DESIGNED	
CHECKED	
NOTED	
DATE	
BY	

PROFILE

DATE	
BY	
DESIGNED	
CHECKED	
NOTED	
DATE	
BY	



JAMES W. AYERS
 PARCEL NO. 6041361



BM "51":
 STA. 76+47.42±, 110.62± RT.
 60D SPIKE NAIL IN POWER POLE S.E. QUADRANT OF
 INTERSECTION 7S & IL. RTE. 29
 ELEVATION = 586.03

PLNPrOfShts050
 L:\1001\030660\Draw Sheets\672829-sht-PlanPrOfShts030.dgn
 3/16/2012