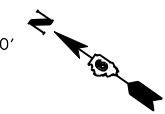
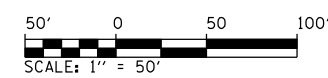


F.A.P. RTE.	SECTION	COUNTY	TOTAL SHEETS	SHEET NO.
75	84-12; 11-3	•	729	138
STA. 87+81.26 TO STA. 100+00		FED. ROAD DIST. NO. 5 ILLINOIS FED. AID PROJECT		
• SANGAMON AND CHRISTIAN				

ELIZABETH G. REISCH, (TRUSTEE)  
UNDER THE ELIZABETH G. REISCH 1998 TRUST

PARCEL NO. 6041331

EXIST. CURVE OLD29.1  
PI STA. = 93+53.26  
 $\Delta = 1^{\circ} 06' 22''$  (RT)  
 $D = 0^{\circ} 07' 53''$   
 $R = 43,591.02'$   
 $T = 420.78'$   
 $L = 841.53'$   
 $E = 2.03'$   
 $e = N.C.$   
 $T.R. = N/A$   
 $S.E. RUN = N/A$   
 $P.C. STA. = 89+32.48$   
 $P.T. STA. = 97+74.01$



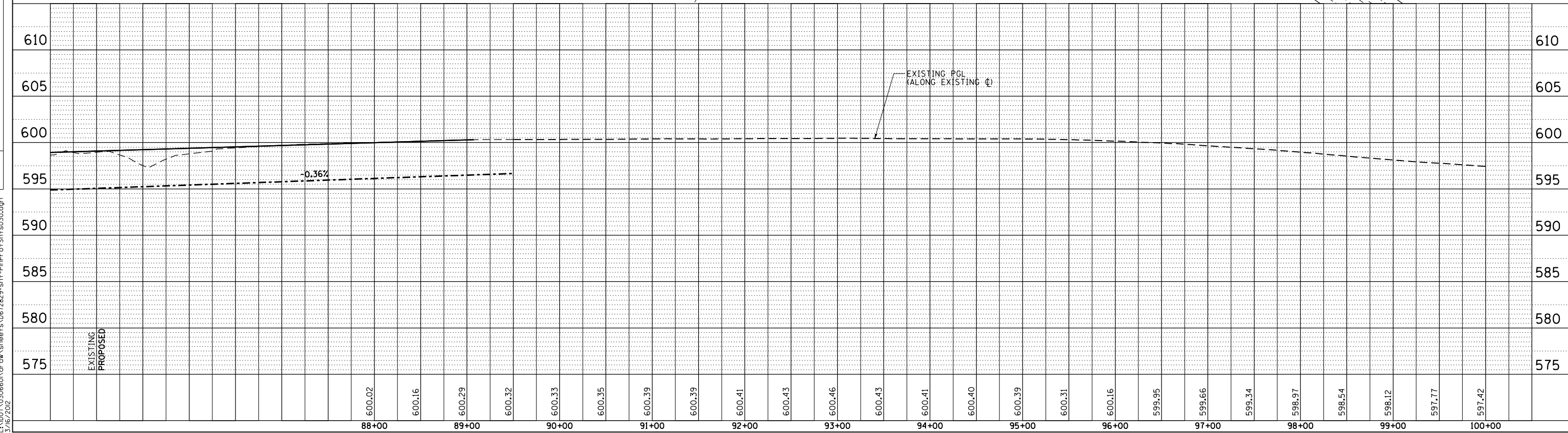
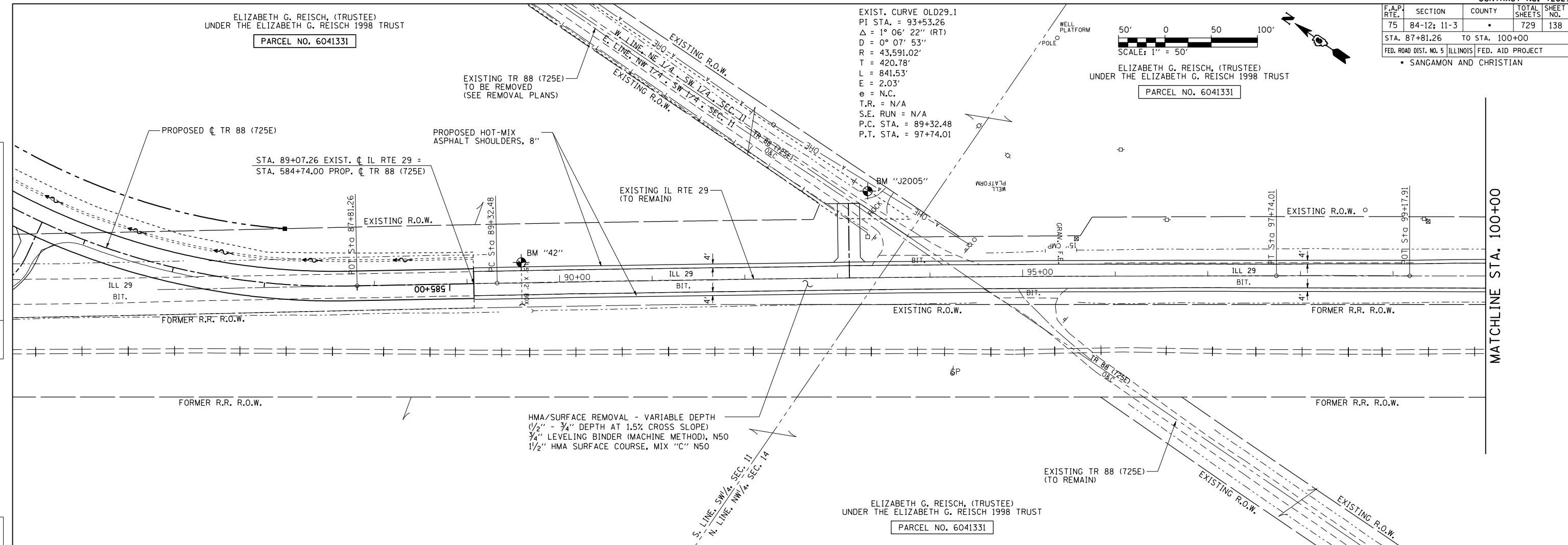
ELIZABETH G. REISCH, (TRUSTEE)  
UNDER THE ELIZABETH G. REISCH 1998 TRUST

PARCEL NO. 6041331

PLAN	DATE	BY
SURVEYED		
PLOTTED		
CHECKED		
NO. OF WAY CHECKED		
NOTE BOOK NO.		
CADD FILE NAME		

PROFILE	DATE	BY
SURVEYED		
PLOTTED		
CHECKED		
NO. OF WAY CHECKED		
NOTE BOOK NO.		
STRUCTURE NOTATIONS CHKD		

PinProf5hts064  
L:\1007\0306601\draw\sheet.s\d672829-sht-PinProf5hts030.dgn  
3/16/2012



MATCHLINE STA. 100+00