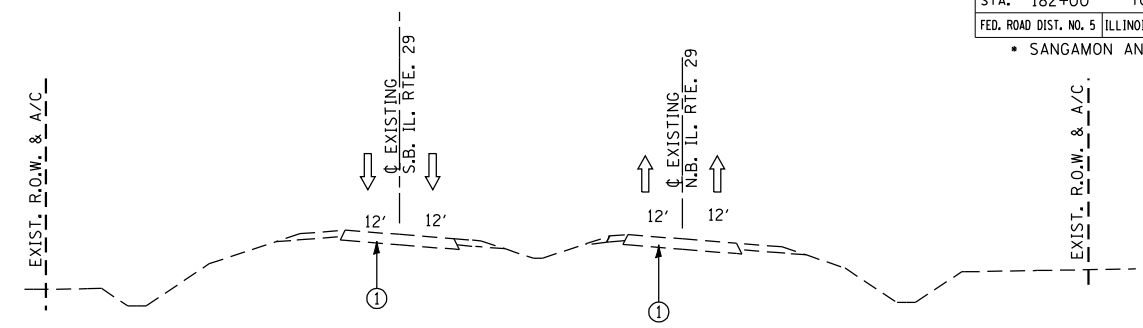
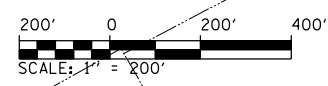
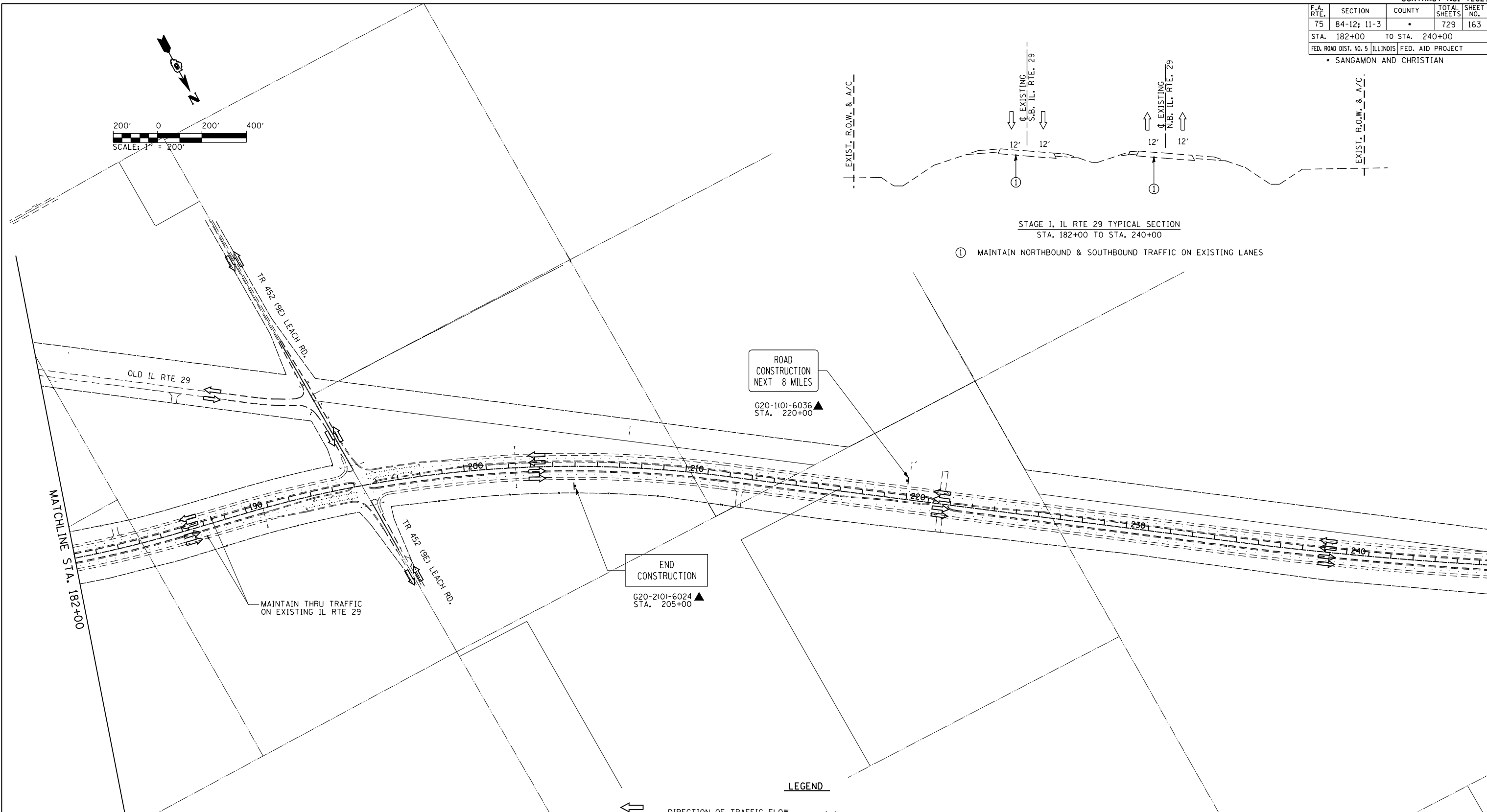


F.A. RTE.	SECTION	COUNTY	TOTAL SHEETS	SHEET NO.
75	84-12; 11-3	•	729	163
STA. 182+00		TO STA. 240+00		
FED. ROAD DIST. NO. 5 ILLINOIS FED. AID PROJECT				
• SANGAMON AND CHRISTIAN				



STAGE I, IL RTE 29 TYPICAL SECTION  
STA. 182+00 TO STA. 240+00

① MAINTAIN NORTHBOUND & SOUTHBOUND TRAFFIC ON EXISTING LANES



LEGEND

- DIRECTION OF TRAFFIC FLOW
- WORK ZONE (STAGE AS SPECIFIED)
- TEMPORARY PAVEMENT
- WORK ZONE EARTHWORK AND DRAINAGE ACTIVITIES ONLY (STAGE AS SPECIFIED)
- COMPLETED STAGE
- TYPE III BARRICADE
- SIGN PANEL/BARRICADE ASSEMBLY (INCLUDED IN THE COST FOR TRAFFIC CONTROL & PROTECTION (SPECIAL), LUMP SUM)
- DRUM WITH STEADY BURNING MONODIRECTIONAL LIGHT
- CONSTRUCTION SIGN
- VERTICAL PANEL

REVISIONS	
NAME	DATE

ILLINOIS DEPARTMENT OF TRANSPORTATION  
**CONSTRUCTION STAGING PLAN  
STAGE 1  
ILLINOIS RTE. 29**  
SCALE: 1" = 200'  
DATE: 03/06/2012  
DRAWN BY: R.A.H.  
CHECKED BY: J.M.M.

Sheet 009  
L:\DOT\030601\Draw\Sheets\030601\Draw\72829-sht-ConStg\_AllSheets.dgn  
3/6/2012