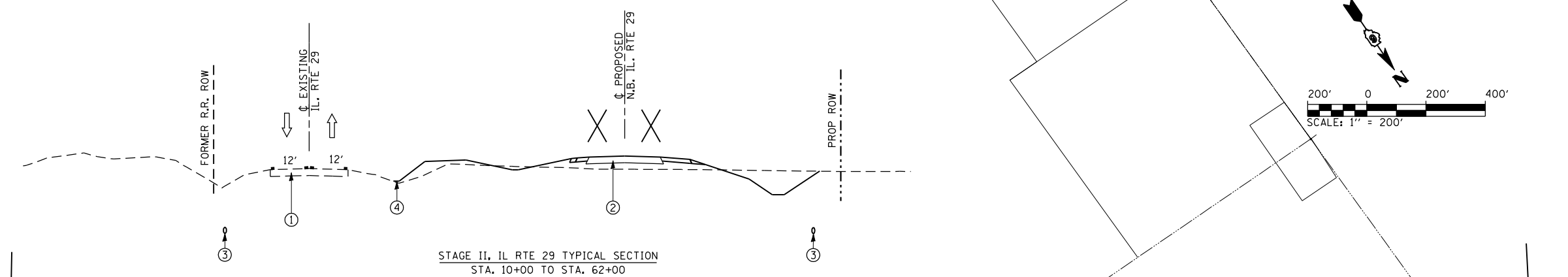
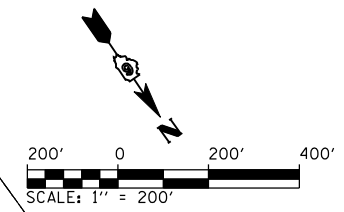
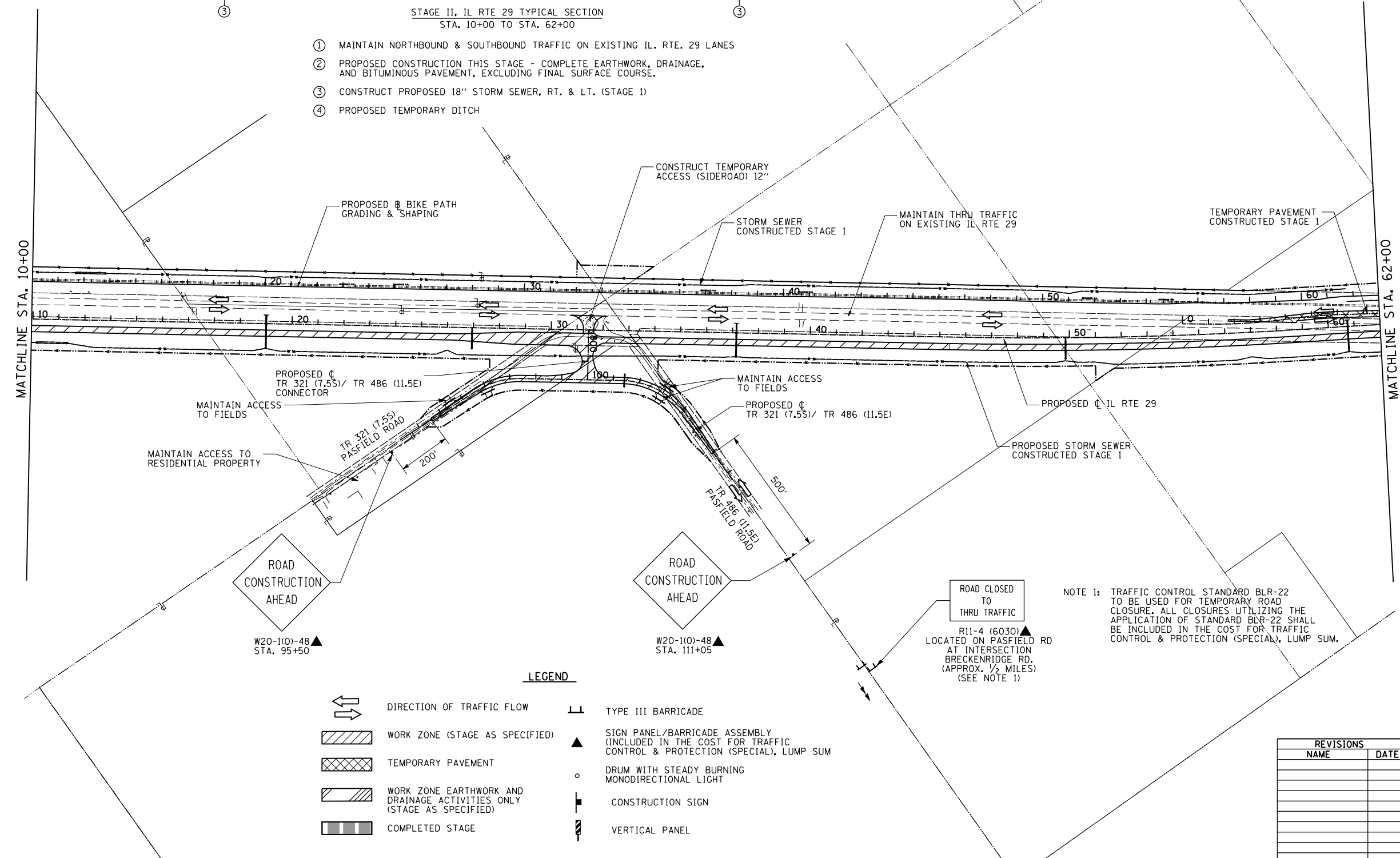


F.A. RTE.	SECTION	COUNTY	TOTAL SHEETS	SHEET NO.
75	84-12; 11-3	•	729	169
STA. 10+00		TO STA. 62+00		
FED. ROAD DIST. NO. 5 ILLINOIS FED. AID PROJECT				
• SANGAMON AND CHRISTIAN				



- ① MAINTAIN NORTHBOUND & SOUTHBOUND TRAFFIC ON EXISTING IL. RTE. 29 LANES  
 ② PROPOSED CONSTRUCTION THIS STAGE - COMPLETE EARTHWORK, DRAINAGE, AND BITUMINOUS PAVEMENT, EXCLUDING FINAL SURFACE COURSE.  
 ③ CONSTRUCT PROPOSED 18" STORM SEWER, RT. & LT. (STAGE 1)  
 ④ PROPOSED TEMPORARY DITCH



NOTE 1: TRAFFIC CONTROL STANDARD BLR-22 TO BE USED FOR TEMPORARY ROAD CLOSURE. ALL CLOSURES UTILIZING THE APPLICATION OF STANDARD BLR-22 SHALL BE INCLUDED IN THE COST FOR TRAFFIC CONTROL & PROTECTION (SPECIAL), LUMP SUM.

**LEGEND**

- |  |   |  |   |
|--|---|--|---|
|  | DIRECTION OF TRAFFIC FLOW   |  | TYPE III BARRICADE  |
|  | WORK ZONE (STAGE AS SPECIFIED)  |  | SIGN PANEL/BARRICADE ASSEMBLY (INCLUDED IN THE COST FOR TRAFFIC CONTROL & PROTECTION (SPECIAL), LUMP SUM) |
|  | TEMPORARY PAVEMENT  |  | DRUM WITH STEADY BURNING MONODIRECTIONAL LIGHT  |
|  | WORK ZONE EARTHWORK AND DRAINAGE ACTIVITIES ONLY (STAGE AS SPECIFIED) |  | CONSTRUCTION SIGN   |
|  | COMPLETED STAGE   |  | VERTICAL PANEL  |

REVISIONS	
NAME	DATE

ILLINOIS DEPARTMENT OF TRANSPORTATION  
**CONSTRUCTION STAGING PLAN  
 STAGE 2  
 ILLINOIS RTE. 29**  
 SCALE: 1" = 200'  
 DATE: 03/06/2012  
 DRAWN BY: R.A.H.  
 CHECKED BY: J.M.M.

Sheet#006  
 L:\DOT\0306601\Draw\Sheets\0306601.dwg  
 sheets\0306601\Draw\Sheets\0306601.dwg  
 snt-ConsFig2-AllSheets.dgn  
 3/6/2012