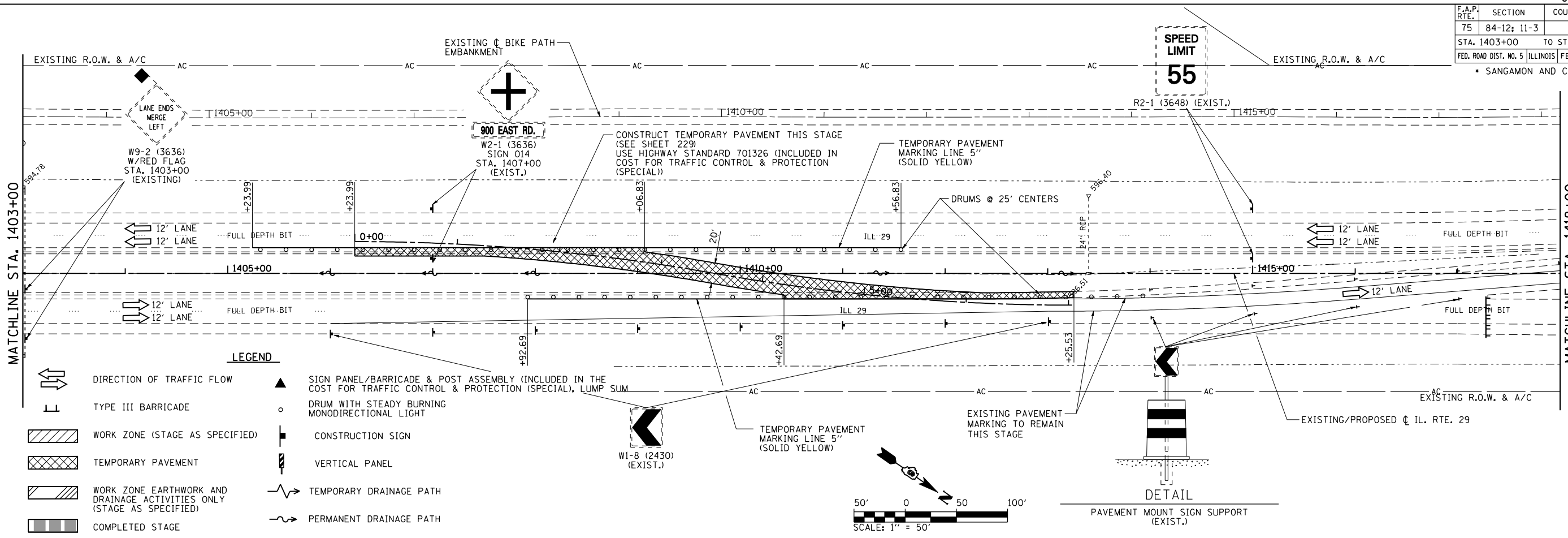
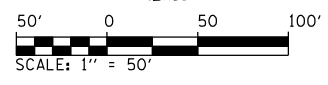
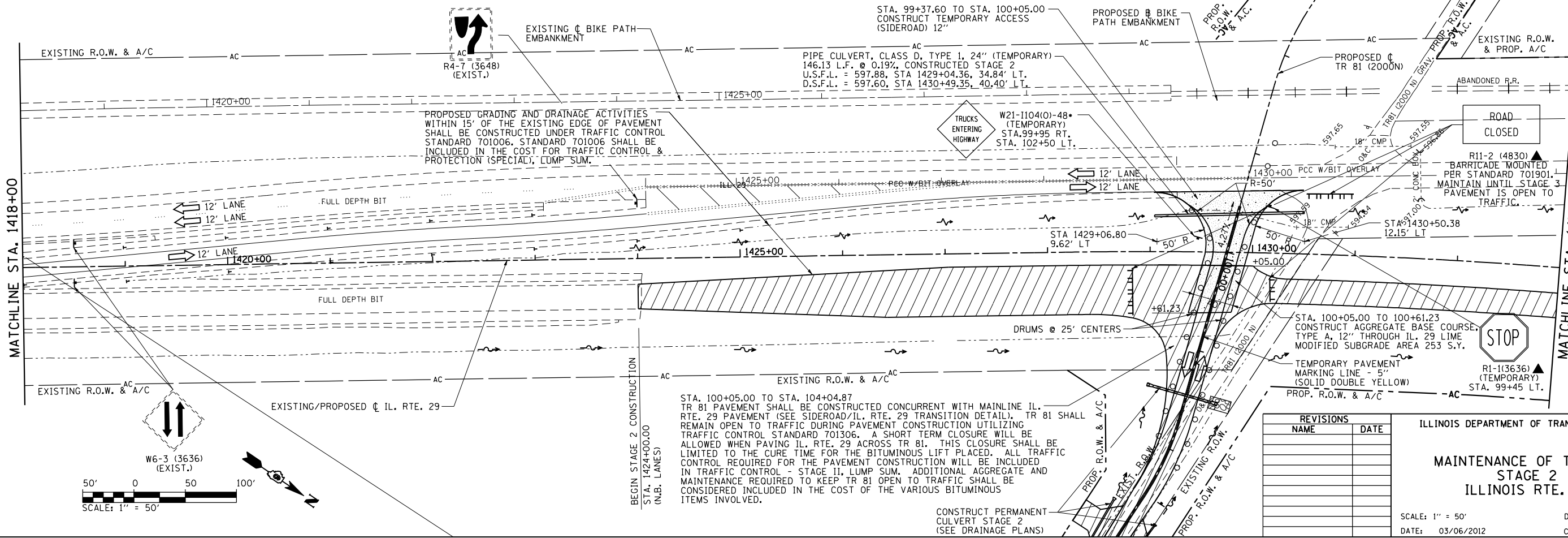
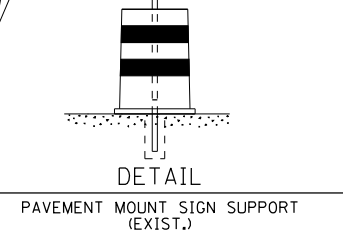
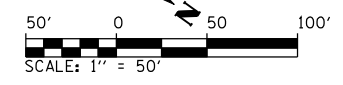


F.A.P. RTE.	SECTION	COUNTY	TOTAL SHEETS	SHEET NO.
75	84-12; 11-3		729	196
STA. 1403+00		TO STA. 1433+00		
FED. ROAD DIST. NO. 5 ILLINOIS FED. AID PROJECT				
• SANGAMON AND CHRISTIAN				



**LEGEND**

- DIRECTION OF TRAFFIC FLOW
- TYPE III BARRICADE
- WORK ZONE (STAGE AS SPECIFIED)
- TEMPORARY PAVEMENT
- WORK ZONE EARTHWORK AND DRAINAGE ACTIVITIES ONLY (STAGE AS SPECIFIED)
- COMPLETED STAGE
- SIGN PANEL/BARRICADE & POST ASSEMBLY (INCLUDED IN THE COST FOR TRAFFIC CONTROL & PROTECTION (SPECIAL), LUMP SUM
- DRUM WITH STEADY BURNING MONODIRECTIONAL LIGHT
- CONSTRUCTION SIGN
- VERTICAL PANEL
- TEMPORARY DRAINAGE PATH
- PERMANENT DRAINAGE PATH



REVISIONS	
NAME	DATE

ILLINOIS DEPARTMENT OF TRANSPORTATION

**MAINTENANCE OF TRAFFIC  
STAGE 2  
ILLINOIS RTE. 29**

SCALE: 1" = 50'

DATE: 03/06/2012

DRAWN BY: R.A.H.  
CHECKED BY: J.M.M.

STA. 100+05.00 TO STA. 104+04.87  
TR 81 PAVEMENT SHALL BE CONSTRUCTED CONCURRENT WITH MAINLINE IL. RTE. 29 PAVEMENT (SEE SIDEROAD/IL. RTE. 29 TRANSITION DETAIL). TR 81 SHALL REMAIN OPEN TO TRAFFIC DURING PAVEMENT CONSTRUCTION UTILIZING TRAFFIC CONTROL STANDARD 701306. A SHORT TERM CLOSURE WILL BE ALLOWED WHEN PAVING IL. RTE. 29 ACROSS TR 81. THIS CLOSURE SHALL BE LIMITED TO THE CURE TIME FOR THE BITUMINOUS LIFT PLACED. ALL TRAFFIC CONTROL REQUIRED FOR THE PAVEMENT CONSTRUCTION WILL BE INCLUDED IN TRAFFIC CONTROL - STAGE II, LUMP SUM. ADDITIONAL AGGREGATE AND MAINTENANCE REQUIRED TO KEEP TR 81 OPEN TO TRAFFIC SHALL BE CONSIDERED INCLUDED IN THE COST OF THE VARIOUS BITUMINOUS ITEMS INVOLVED.

Default \\dot\0306601\draw\sheets\0672829-sht-M01STG2-003.dgn 3/6/2012