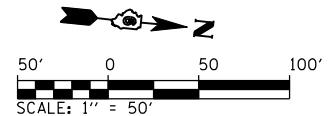
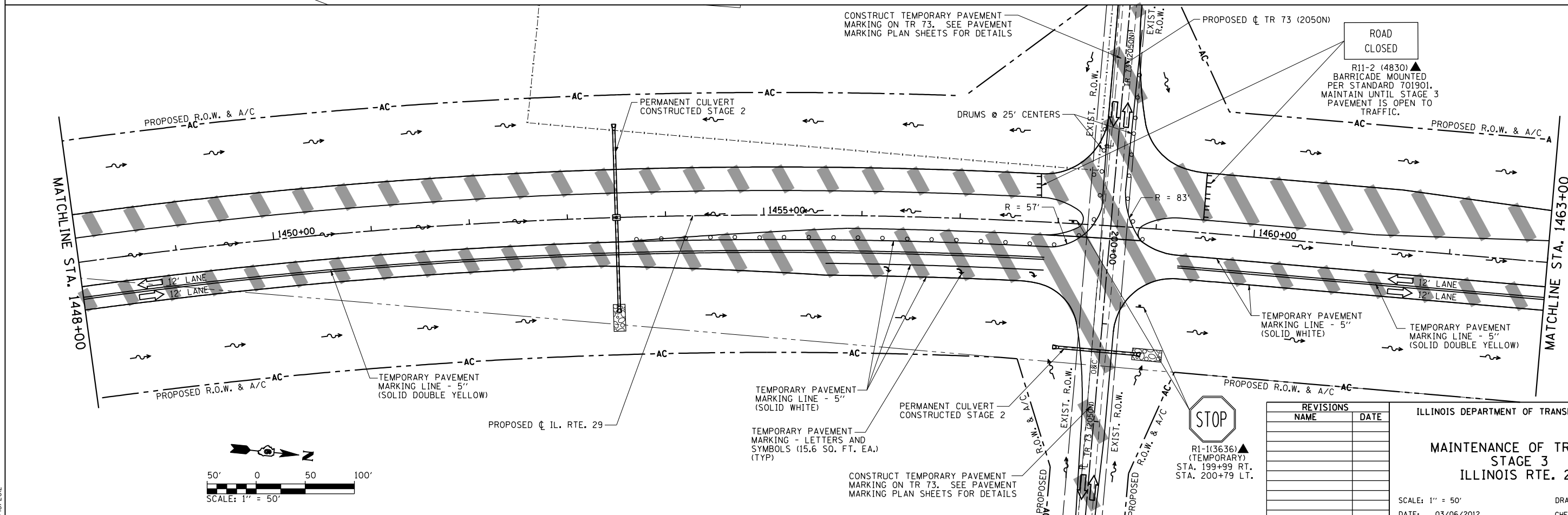
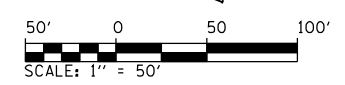
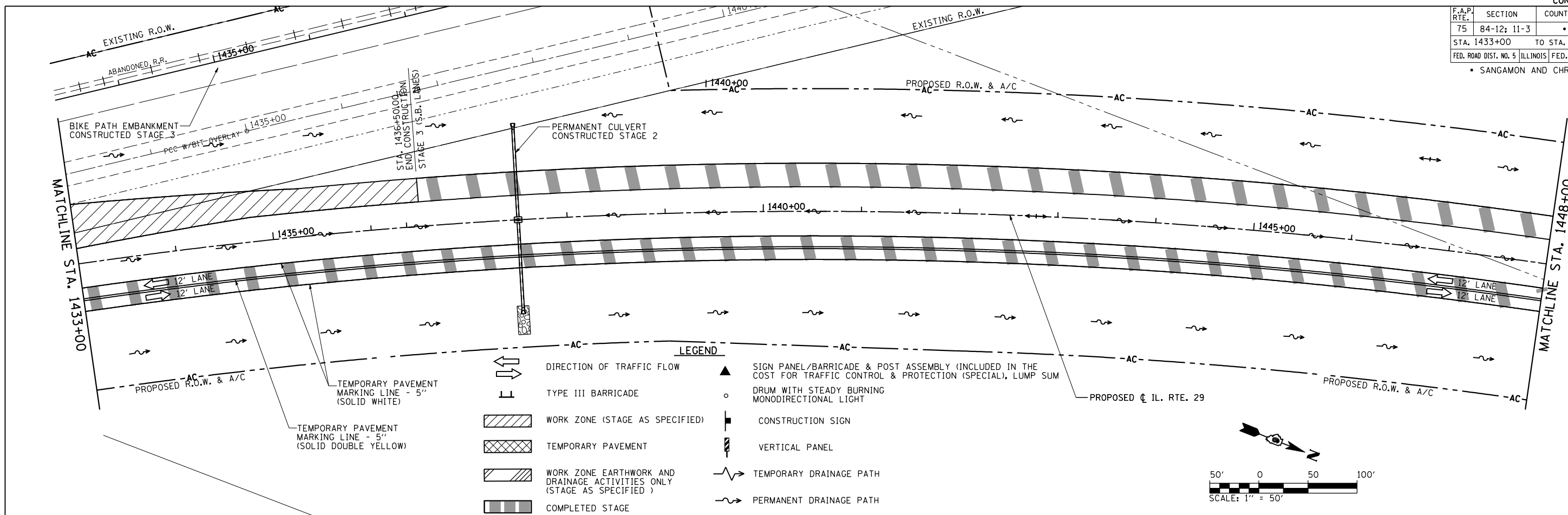


F.A.P. RTE.	SECTION	COUNTY	TOTAL SHEETS	SHEET NO.
75	84-12: 11-3		729	214
STA. 1433+00		TO STA. 1463+00		
FED. ROAD DIST. NO. 5 ILLINOIS FED. AID PROJECT				
• SANGAMON AND CHRISTIAN				



REVISIONS	
NAME	DATE

ILLINOIS DEPARTMENT OF TRANSPORTATION
**MAINTENANCE OF TRAFFIC
 STAGE 3
 ILLINOIS RTE. 29**

SCALE: 1" = 50'
 DATE: 03/06/2012

DRAWN BY: R.A.H.
 CHECKED BY: J.M.M.

MAINTENANCE OF TRAFFIC STAGE 3: IL RTE. 29 - STA. 1433+00 TO STA. 1463+00

Default: I:\dot\030660\draw\sheet\030660\72829-shr1-W01STG3_004.dgn 3/6/2012