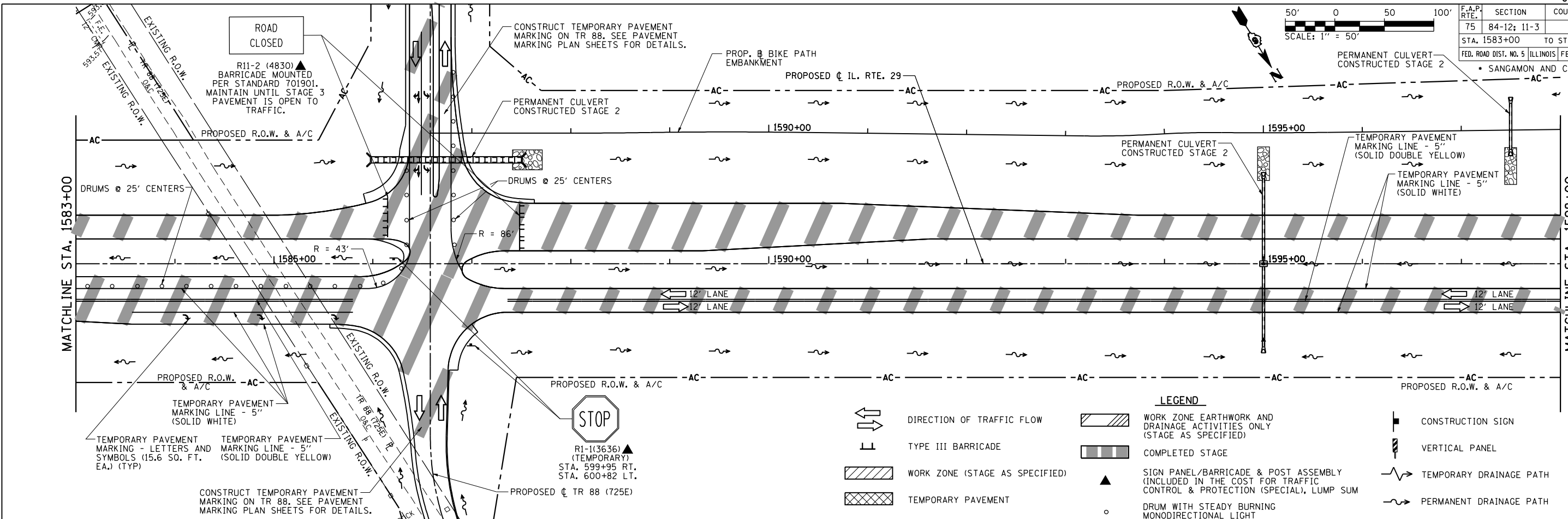
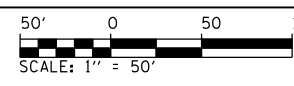
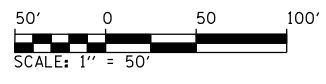
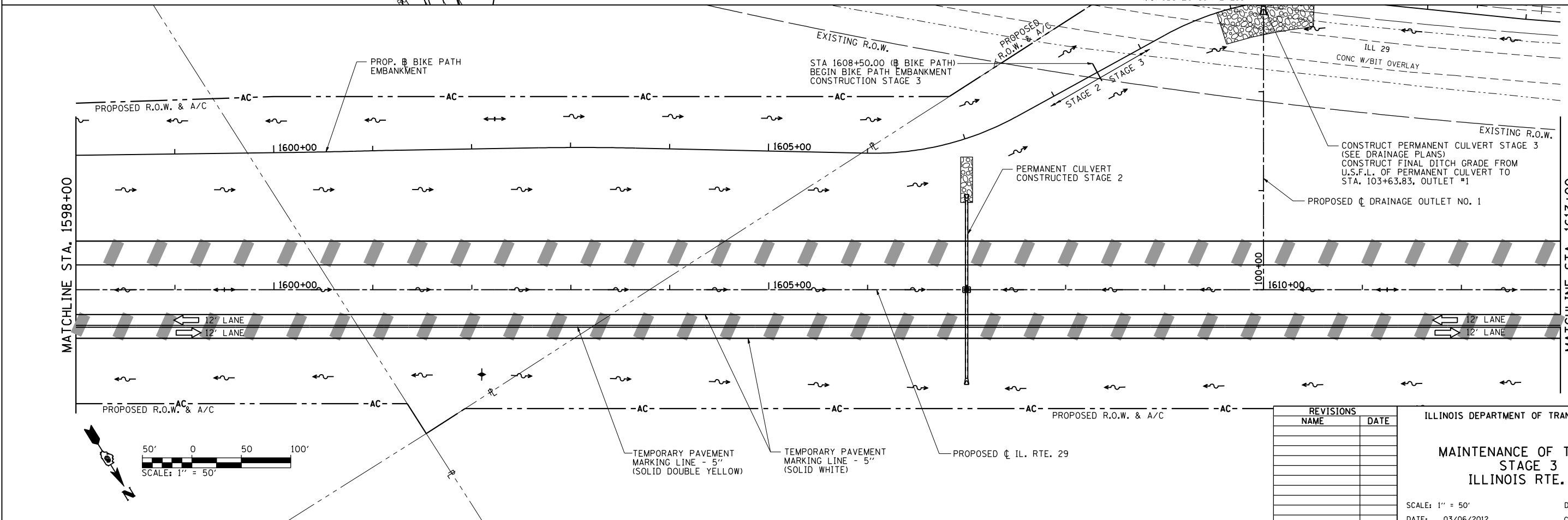


| F.A.P. RTE. | SECTION | COUNTY | TOTAL SHEETS | SHEET NO. |
|---|-------------|-----------------|--------------|-----------|
| 75 | 84-12: 11-3 | | 729 | 219 |
| STA. 1583+00 | | TO STA. 1613+00 | | |
| FED. ROAD DIST. NO. 5 ILLINOIS FED. AID PROJECT | | | | |
| SANGAMON AND CHRISTIAN | | | | |



LEGEND

| | | | | | |
|--|--------------------------------|--|---|--|-------------------------|
| | DIRECTION OF TRAFFIC FLOW | | WORK ZONE EARTHWORK AND DRAINAGE ACTIVITIES ONLY (STAGE AS SPECIFIED) | | CONSTRUCTION SIGN |
| | TYPE III BARRICADE | | COMPLETED STAGE | | VERTICAL PANEL |
| | WORK ZONE (STAGE AS SPECIFIED) | | SIGN PANEL/BARRICADE & POST ASSEMBLY (INCLUDED IN THE COST FOR TRAFFIC CONTROL & PROTECTION (SPECIAL), LUMP SUM | | TEMPORARY DRAINAGE PATH |
| | TEMPORARY PAVEMENT | | DRUM WITH STEADY BURNING MONODIRECTIONAL LIGHT | | PERMANENT DRAINAGE PATH |



| REVISIONS | |
|-----------|------|
| NAME | DATE |
| | |
| | |
| | |
| | |
| | |
| | |
| | |
| | |
| | |

ILLINOIS DEPARTMENT OF TRANSPORTATION

**MAINTENANCE OF TRAFFIC
STAGE 3
ILLINOIS RTE. 29**

SCALE: 1" = 50'

DATE: 03/06/2012

DRAWN BY: R.A.H.
CHECKED BY: J.M.M.

Default: I:\dot\030660\Draw\Sheets\0672829-sht-MOT\STG3-009.dgn 3/6/2012