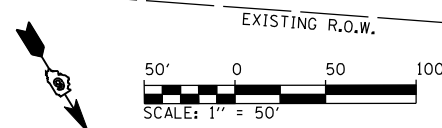
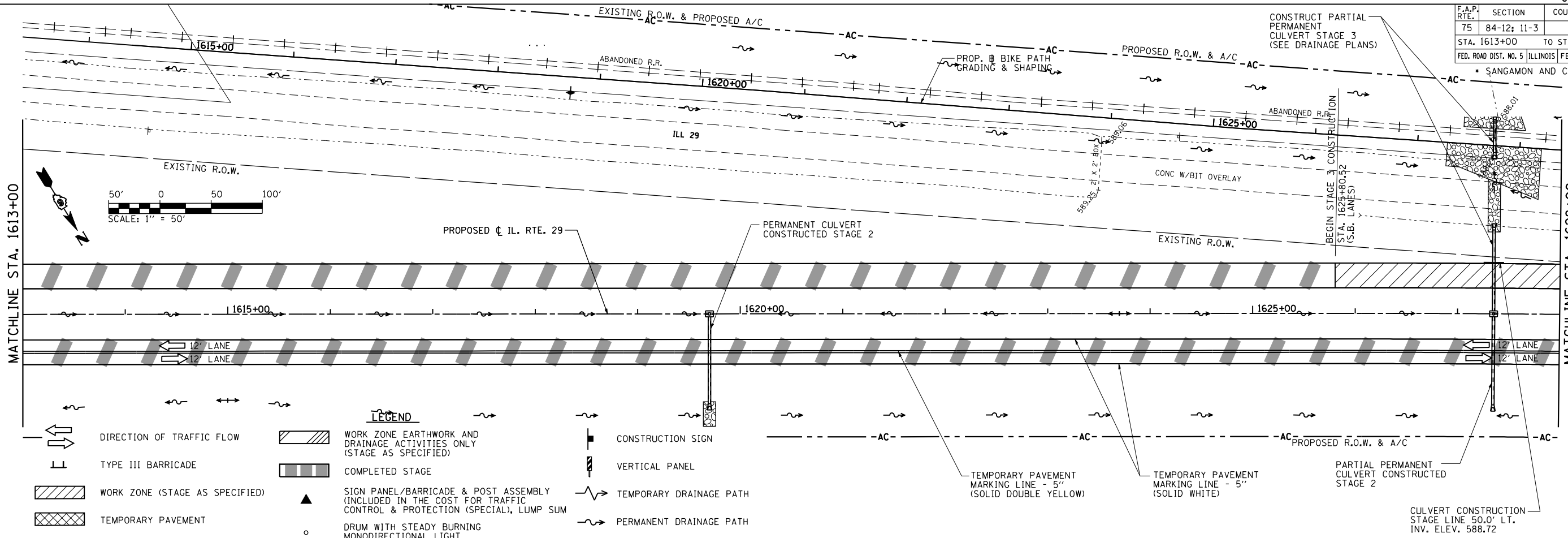
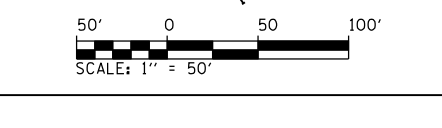
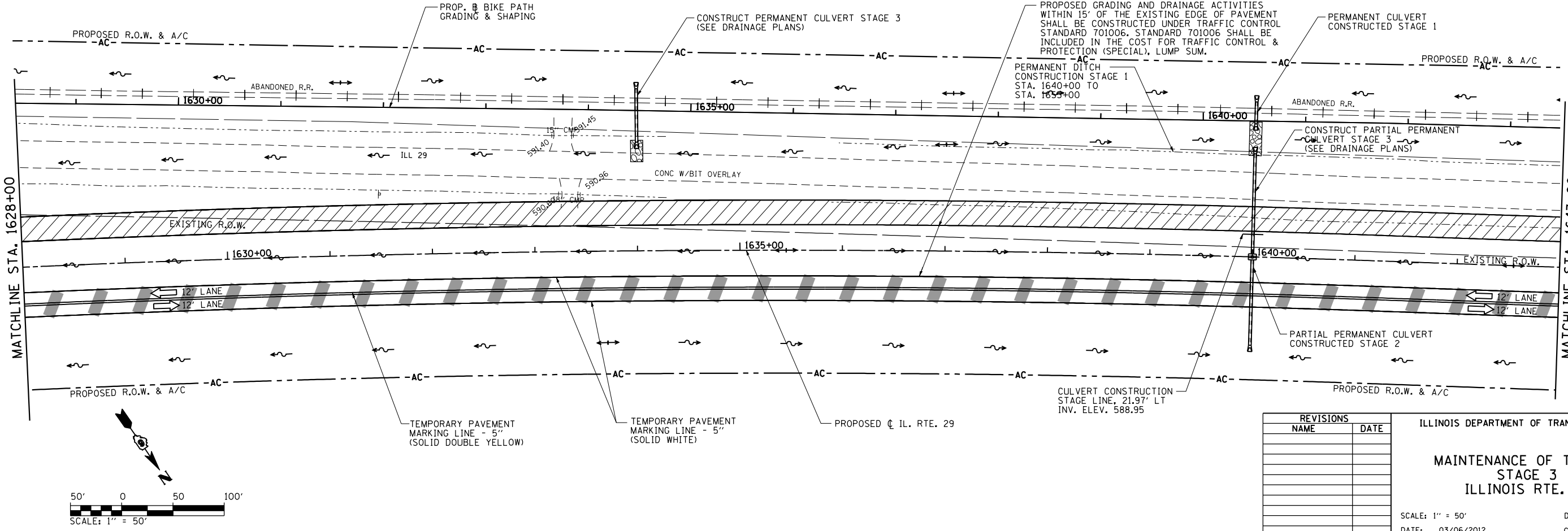


F.A.P. RTE.	SECTION	COUNTY	TOTAL SHEETS	SHEET NO.
75	84-12: 11-3		729	220
STA. 1613+00 TO STA. 1643+00		ILLINOIS FED. AID PROJECT		
SANGAMON AND CHRISTIAN				



LEGEND

	DIRECTION OF TRAFFIC FLOW		WORK ZONE EARTHWORK AND DRAINAGE ACTIVITIES ONLY (STAGE AS SPECIFIED)		CONSTRUCTION SIGN
	TYPE III BARRICADE		COMPLETED STAGE		VERTICAL PANEL
	WORK ZONE (STAGE AS SPECIFIED)		SIGN PANEL/BARRICADE & POST ASSEMBLY (INCLUDED IN THE COST FOR TRAFFIC CONTROL & PROTECTION (SPECIAL), LUMP SUM		TEMPORARY DRAINAGE PATH
	TEMPORARY PAVEMENT		DRUM WITH STEADY BURNING MONODIRECTIONAL LIGHT		PERMANENT DRAINAGE PATH



REVISIONS	
NAME	DATE

ILLINOIS DEPARTMENT OF TRANSPORTATION

**MAINTENANCE OF TRAFFIC
STAGE 3
ILLINOIS RTE. 29**

SCALE: 1" = 50'
DATE: 03/06/2012

DRAWN BY: R.A.H.
CHECKED BY: J.M.M.

Default: \\dot\030660\draw\sheets\0672829-sht-MOT\STG3_00.dgn 3/6/2012